

VA



U.S. Department
of Veterans Affairs



Small House Model prototype home

November 2016

THIS PAGE WAS INTENTIONALLY LEFT BLANK

TABLE OF CONTENTS

1.0 INTRODUCTION.....	1-1
1.1. Acknowledgments.....	1-3
1.2. Executive Summary.....	1-5
1.2.1. Introduction.....	1-5
1.2.2. Process.....	1-5
1.2.3. Project Components.....	1-5
2.0 PROGRAM AND EQUIPMENT.....	2-1
2.1. Program Summary.....	2-3
2.2. Program for Design.....	2-5
2.3. Equipment Guide List.....	2-13
3.0 PROPOSED LAYOUT.....	3-1
3.1. Proposed Layout Option 1.....	3-3
3.2. Proposed Layout Option 2.....	3-7
3.3. Clerestory Section.....	3-11

THIS PAGE WAS INTENTIONALLY LEFT BLANK



U.S. Department of Veterans Affairs

1.0 INTRODUCTION

PROTOTYPE SMALL HOUSE MODEL

- 1.1. ACKNOWLEDGMENTS1-3
- 1.2. EXECUTIVE SUMMARY1-5
 - 1.2.1. Introduction1-5
 - 1.2.2. Process1-5
 - 1.2.3. Project Components1-5

THIS PAGE WAS INTENTIONALLY LEFT BLANK

1.0 INTRODUCTION

1.1. Acknowledgments

Credit is due to the following individuals whose leadership, knowledge, skills, and ability made this document possible.

DEPARTMENT OF VETERANS AFFAIRS - VETERANS HEALTH ADMINISTRATION OFFICE OF GERIATRICS AND EXTENDED CARE

Marianne Shaughnessy, Director, Facility-Based Program Policy
Ph.D., AGPCNP-BC

Lisa Minor, RN, MSSL Director, Facility-Based Programs, Geriatric and Extended Care Operations

STATE HOME CONSTRUCTION PROGRAM

Kelley J. Kash, Colonel, Maine Veterans' Homes CEO
USAF, MSC (Retired)

Van F. Moore WESTCARE Health Care Management Services
Senior Vice President

OFFICE OF CONSTRUCTION & FACILITIES MANAGEMENT

Gary Fischer, AIA Project Manager, Senior Healthcare Architect

Kayvan Madani Nejad, Architect
Ph.D., AIA

Linda Chan Facility Planner

CONSULTANTS - SMITHGROUPJJR

Bill Kline, AIA, ACHA, EDAC, LEED AP, Principal in Charge
CAA

Shary Adams, AIA, ACHA, EDAC, LEED Project Manager
AP

1.0 INTRODUCTION

1.2. Acknowledgments

CONSULTANTS - SMITHGROUPJJR

Alexis Denton, AIA	Senior Living Planner
Laura Babinski, RA, LEED AP BD+C	Technical Architect
Hyewon Sun	Technical Architect

SUB-CONSULTANTS - THE INNOVA GROUP

Chris Phillips	Project Manager
Gail Cisneros, RN	Equipment Planner
Lee Pettit, AIA, LEED GA	Consultant

1.0 INTRODUCTION

1.2. Executive Summary

1.2.1. Introduction

The goal of this document is to establish a baseline for new construction of Houses within Community Living Centers (CLCs), based on the Small House Model. The proposed plan was developed simultaneously and in concert with the Small House Model Design Guide, and embraces the Principles of Small House Design as outlined in that guide. The layouts proposed here strike a balance between overall cost and operational efficiency, while maintaining focus on the resident-centered model of care and a residential environment.

This project uses, as an example scenario, new construction of a single House within a horizontal (single-story) CLC. The project does not specifically address vertical CLCs which may have homes stacked within a single building, nor does it address renovations to an existing VA facility. However, understanding the principles presented here and in the Small House Model Design Guide will inform the selection and build-out of suitable sites.

1.2.2. Process

To accomplish this task, the project team included VHA subject matter experts, VHA program officials, Office of Construction & Facilities Management (CFM) staff, representatives from the State Veterans Home Program, and the design consultant team. The process was a collaborative effort intended to elicit participation of a diverse group representing the typical cross-section of project stakeholders. The group came together in a number of collaborative working sessions over several months. With the concurrence and support of the VHA leadership the process will continue with implementation of these prototypes in upcoming CLC projects and through a feedback loop of lessons-learned to further refine and improve them.

1.2.3. Project Components

The two plan options presented in this document are defined with standard room floor plans and equipment plans. The floor plans utilize the direction and guidance stipulated by the Room Templates in the Small House Model Design Guide, where applicable. This includes templates for the resident bedroom and bathroom, the living room, dining room, den and kitchen, as well as the house office, laundry room and bathing suite. The building shell, though implied for clarity, is not a part of this scope of work. The structural, mechanical, plumbing, and electrical systems are not designed but shown for conceptual location purposes only for this project.

THIS PAGE WAS INTENTIONALLY LEFT BLANK



U.S. Department
of Veterans Affairs

2.0 PROGRAM AND EQUIPMENT

PROTOTYPE

SMALL HOUSE MODEL

2.1. PROGRAM SUMMARY.....	2-3
2.2. PROGRAM FOR DESIGN.....	2-5
2.3. EQUIPMENT GUIDE LIST.....	2-13

THIS PAGE WAS INTENTIONALLY LEFT BLANK

2.0 FUNCTIONAL CONCEPTS

2.1. Program Summary

SPACE NAME	NSF (NSM)
Resident Areas	
Bedroom, Resident (12 in home)	230 (21.4)
Bathroom, Resident (12 in home)	80 (7.5)
Living Room	450 (41.9)
Dining Room	530 (49.2)
Kitchen	360 (33.4)
Den	180 (16.8)
Laundry	135 (12.5)
Bathing Suite	140 (13)
Foyer	80 (7.5)
Alcove, Sitting (4 in home)	125 (11.7)
Vestibule	150 (14)
Support Areas	
Pantry	80 (7.5)
Closet, Kitchen Housekeeping	15 (1.4)
Housekeeping Aides Closet	60 (5.6)
Utility, Clean	60 (5.6)
Utility, Soiled	80 (7.5)
Storage, Clean Linen	40 (3.8)
Medication Room	80 (7.5)
Toilet, Visitor (locate adjacent to and connect to Bathing Suite)	60 (5.6)
Storage, Home	80 (7.5)

2.0 FUNCTIONAL CONCEPTS

2.1. Program Summary

SPACE NAME	NSF (NSM)
Storage, Recreation	40 (3.8)
Storage, Equipment	120 (11.2)
Garage (Option 1) / Receiving (Option 2)	240 (22.3)
Gas Manifold Room (may be located in Garage but in a separate room)	40 (3.8)
Alcove, Crash Cart	20 (1.9)
Staff and Administrative Areas	
Home Office	100 (9.3)
Lounge, Staff	180 (16.8)
Toilet, Staff	60 (5.6)

2.0 FUNCTIONAL CONCEPTS

2.2. Program for Design

PROGRAM FOR DESIGN

VA COMMUNITY LIVING CENTER PROTOTYPE

VA COMMUNITY LIVING CENTER PROTOTYPE
WASHINGTON, D.C.

Projected Year: 2015 Midpoint Year: 2016

VISN: 0 State: XX Station ID: 000
Station: VAXXX, Any City
Installation: VA Anywhere Healthcare System

Project POC: Chris Phillips
chris.phillips@theinnovagroup.com
9442 Capital of Texas Highway North, Arboretum Plaza I, Suite 325
Austin, TX 78759

Project Created: 20 Oct 2015 03:37PM ET by Gail Cisneros
Space Plan Last Edited: 25 Oct 2016 05:04PM ET by Chris Phillips

Contents List Created: 20 Oct 2015 06:40PM ET by Gail Cisneros
Contents List Last Edited: 25 Oct 2016 04:36PM ET by Chris Phillips

Report Generated: 25 Oct 2016 05:05PM

Program For Design (25 Oct 2016 05:05PM)

VA COMMUNITY LIVING CENTER PROTOTYPE
 VA COMMUNITY LIVING CENTER PROTOTYPE
 WASHINGTON, D.C.

Department: 1 - COMMUNITY LIVING CENTER (CLC) (106)

Functional Area: 1 - CALCULATION AREA

Qty	Room Code	Room Name	Unit Area	Net Area	Const Phase	Const Type
1	CALC1	Number of Resident Homes	0	0	1	0

FA Totals: Room Qty: 1 Net Area: 0 Gross Area: 0

Program For Design (25 Oct 2016 05:05PM)

VA COMMUNITY LIVING CENTER PROTOTYPE
 VA COMMUNITY LIVING CENTER PROTOTYPE
 WASHINGTON, D.C.

Department: 1 - COMMUNITY LIVING CENTER (CLC) (106)
Functional Area: 2 - RESIDENT HOME RESIDENT AREA

Qty	Room Code	Room Name	Unit Area	Net Area	Const Phase	Const Type
1	CLHAS	Alcove, Sitting	125	125	1	0
	<i>Outside rooms 1-4</i>					
1	CLHAS	Alcove, Sitting	125	125	1	0
	<i>Outside rooms 5 and 6</i>					
1	CLHAS	Alcove, Sitting	125	125	1	0
	<i>Outside rooms 7 and 8</i>					
1	CLHAS	Alcove, Sitting	125	125	1	0
	<i>Outside rooms 9-12</i>					
12	CLHBD	Bedroom, Resident	230	2,760	1	0
12	CLHBR	Bathroom, Resident	80	960	1	0
1	CLHBS	Bathing Suite	140	140	1	0
	<i>Add secondary door to hallway for visitor access to toilet</i>					
1	CLHDN	Den	180	180	1	0
1	CLHDR	Dining Room	530	530	1	0
1	CLHFY	Foyer	80	80	1	0
1	CLHKN	Kitchen	360	360	1	0
1	CLHLD	Laundry	135	135	1	0
1	CLHLR	Living Room	450	450	1	0
1	VES01	Vestibule	150	150	1	0

FA Totals: Room Qty: 36 Net Area: 6,245 Gross Area: 9,680

Program For Design (25 Oct 2016 05:05PM)

VA COMMUNITY LIVING CENTER PROTOTYPE
 VA COMMUNITY LIVING CENTER PROTOTYPE
 WASHINGTON, D.C.

Department: 1 - COMMUNITY LIVING CENTER (CLC) (106)
Functional Area: 3 - RESIDENT HOME SUPPORT AREA

Qty	Room Code	Room Name	Unit Area	Net Area	Const Phase	Const Type
1	CLHGM	Gas Manifold Room	40	40	1	0
1	CLHGR	Garage / Receiving	240	240	1	0
<i>At a minimum, each home will have a Receiving area or it can be combined with the Garage.</i>						
1	CLHKH	Closet, Kitchen Housekeeping	15	15	1	0
1	CLHMD	Medication Room	80	80	1	0
1	CLHPY	Pantry	80	80	1	0
1	CLHS1	Storage, Clean Linen	40	40	1	0
1	CLHS2	Storage, Home	80	80	1	0
1	CLHS3	Storage, Recreation	40	40	1	0
1	CLHS4	Storage, Equipment	120	120	1	0
1	SPCC1	Alcove, Crash Cart	20	20	1	0
1	SPCU1	Utility, Clean	60	60	1	0
1	SPHC1	Housekeeping Aides Closet (HAC)	60	60	1	0
1	SPSU1	Utility, Soiled	80	80	1	0

FA Totals: Room Qty: 13 Net Area: 955 Gross Area: 1,480

Program For Design (25 Oct 2016 05:05PM)

VA COMMUNITY LIVING CENTER PROTOTYPE
 VA COMMUNITY LIVING CENTER PROTOTYPE
 WASHINGTON, D.C.

Department: 1 - COMMUNITY LIVING CENTER (CLC) (106)
Functional Area: 4 - RESIDENT HOME STAFF AND ADMINISTRATIVE AREA

Qty	Room Code	Room Name	Unit Area	Net Area	Const Phase	Const Type
1	CLHOF	Home Office	100	100	1	0
1	SALG1	Lounge, Staff	180	180	1	0
1	TNPG1	Toilet, Staff	60	60	1	0

FA Totals: Room Qty: 3 Net Area: 340 Gross Area: 527

Dept Totals: Room Qty: 53 Net Area: 7,540 Gross Area: 11,687

Bldg Totals: Room Qty: 53 Net Area: 7,540 Sum of Dept Gross Area: 11,687 Gross Area: 11,687

Program For Design (25 Oct 2016 05:05PM)

VA COMMUNITY LIVING CENTER PROTOTYPE
 VA COMMUNITY LIVING CENTER PROTOTYPE
 WASHINGTON, D.C.

Department Area Summary (NSF/GSF)

Department	Total NSF	Total GSF
1 - COMMUNITY LIVING CENTER (CLC) (106) (NTG Factor: 1.55)	7,540	11,687
Totals:	7,540	11,687

Program For Design (25 Oct 2016 05:05PM)

VA COMMUNITY LIVING CENTER PROTOTYPE
VA COMMUNITY LIVING CENTER PROTOTYPE
WASHINGTON, D.C.

Building Area Summary And Net to Gross Factor Breakdown

Current Building Factor applied to this Project: 1.00

	Building GSF
Current	11,687

Privacy Act - FOR OFFICIAL USE ONLY
7

Program For Design (25 Oct 2016 05:05PM)

VA COMMUNITY LIVING CENTER PROTOTYPE
VA COMMUNITY LIVING CENTER PROTOTYPE
WASHINGTON, D.C.

Report Parameters

Sorted By: Compressed to Dept position, FA position, Room Code

(END OF REPORT)

Privacy Act - FOR OFFICIAL USE ONLY
8

2.0 FUNCTIONAL CONCEPTS

2.3. Equipment Guide List

Project Room Contents

VA COMMUNITY LIVING CENTER PROTOTYPE

VA COMMUNITY LIVING CENTER PROTOTYPE
WASHINGTON, D.C.

Projected Year: 2015 Midpoint Year: 2016

VISN: 0 State: XX Station ID: 000
Station Name: VAXXX, Any City
Installation: VA Anywhere Healthcare System

Project POC: Chris Phillips
chris.phillips@theinnovagroup.com
9442 Capital of Texas Highway North, Arboretum Plaza I, Suite 325
Austin, TX 78759

Project Created: 20 Oct 2015 03:37PM ET by Gail Cisneros
Space Plan Last Edited: 04 Jan 2017 11:27AM ET by Chris Phillips

Contents List Created: 20 Oct 2015 06:40PM ET by Gail Cisneros
Contents List Last Edited: 04 Jan 2017 01:54PM ET by Chris Phillips

Report Generated: 04 Jan 2017 01:56PM ET

Project Room Contents (04 Jan 2017 01:56PM ET)

Department: COMMUNITY LIVING CENTER (CLC) (106) Room Code: CLHBD Agency Room Name: Bedroom, Resident (12 Rooms) Criteria Room Name: Bedroom, Resident (12 Rooms)		Functional Area: RESIDENT HOME RESIDENT AREA Room Area: 230 Staff: 0 Blueprint #:									
JSN	Content Name	Qty	Unit Of Issue	Log Cat/ Acq Code	Util1	Util2	Util3	Util4	Util5	Util6	NSN
A1205	Lift System, Overhead, Patient Room w/Bath	12	EA	VC	.	F	.	.	.	J	
A5212	Bracket, Television, Wall-Mounted, Tilt/Angle	12	EA	VV	
A5220	Bracket, Television, Wall Backing	12	EA	CC	6520
A6046	Artwork, Decorative, With Frame	12	EA	VV	6230
F0210	Chair, Side, Without Arms	12	EA	VV	7110011885296
F0265	Chair, Recliner	12	EA	VV	6530
F0400	Cabinet, Bedside, Door, Drawer	24	EA	VV	6530
F2420	Lamp, Table, With Shade	12	EA	VV	.	A	6230
F3200	Clock, Battery, 12" Diameter	12	EA	VV	6645
M0506	Television, Flat Screen	12	EA	VV	.	A	7730
M0755	Flowmeter, Oxygen, Low Flow	12	EA	VV	.	.	A	.	.	.	6680
M3070	Hamper, Linen, Mobile, w/Lid	12	EA	VV	7240
UCE05	Basket, Wastepaper	12	EA	VV	
UCE16	Cabinet, Medication, Wall Mounted	12	EA	CC	J	
UCF15	Dresser/Desk Combination	12	EA	VV	
UCF17	Bed, Resident	12	EA	VV	

Department: COMMUNITY LIVING CENTER (CLC) (106) Room Code: CLHBR Agency Room Name: Bathroom, Resident (12 Rooms) Criteria Room Name: Bathroom, Resident (12 Rooms)		Functional Area: RESIDENT HOME RESIDENT AREA Room Area: 80 Staff: 0 Blueprint #:									
JSN	Content Name	Qty	Unit Of Issue	Log Cat/ Acq Code	Util1	Util2	Util3	Util4	Util5	Util6	NSN
A1066	Mirror, Float Glass, With SS Frame	12	EA	CC	7105

Project Room Contents (04 Jan 2017 01:56PM ET)

A5075	Dispenser, Soap, Disposable	12	EA	VV	4510
A5110	Grab Bar, 1-1/4" Dia., SS, 2 Wall, Shower Use	12	EA	CC	6530
A5115	Grab Bar, Flip-Up, Heavy Duty	24	EA	CC	
A5145	Hook, Garment, Double, SS, Surface Mounted	12	EA	CC	5340007541678
A5170	Rod, Shower Curtain, 1"Diameter, W/Curtain & Hooks	12	EA	CC	6530
A5195	Dispenser, Toilet Tissue, SS, 1-Roll, Surface MNNTD	12	EA	CC	4510007026934
A5205	Bar, Towel, 1" Diameter, SS, Surface Mounted	12	EA	CC	4510
CT025	Countertop, Solid Surface with Sink Combination	12	EA	CC	6530
P5040	Shower, Single, Hand-Held	12	EA	CC	D	4510
P9056	Toilet, Floor Mounted, Bariatric	12	EA	CC	B	
UCE01	Chair, Shower, Bariatric	12	EA	VV	
UCE05	Basket, Wastepaper	12	EA	VV	
UCE15	Cabinet, Bathroom Personal Item	12	EA	CC	
UCE21	Dispenser, Paper Towel, Recessed	12	EA	CC	

Department: COMMUNITY LIVING CENTER (CLC) (106)	RESIDENT HOME RESIDENT AREA
Room Code: CLHLR	450
Agency Room Name: Living Room	0
Criteria Room Name: Living Room	
	Functional Area:
	Room Area:
	Staff:
	Blueprint #:

JSN	Content Name	Qty	Unit Of Issue	Log Cat/ Acq Code	Util1	Util2	Util3	Util4	Util5	Util6	NSN
A5212	Bracket, Television, Wall-Mounted, Tilt/Angle	1	EA	VV	NSN
A5220	Bracket, Television, Wall Backing	1	EA	CC	6520
A6046	Artwork, Decorative, With Frame	2	EA	VV	6230
C03E0	Cabinet, U/C/B, 1 Shelf, 1 Drawer, 2 DO, 36x30x22	3	EA	CC	6530
CT020	Countertop, Solid Surface	10	LF	CC	6530
F0255	Chair, Easy	6	EA	VV	7100
F0375	Sofa, Upholstered	1	EA	VV	7110
F0740	Table, Occasional, Lamp	2	EA	VV	7110
F2420	Lamp, Table, With Shade	2	EA	VV	.	A	6230
F3200	Clock, Battery, 12" Diameter	1	EA	VV	6645

Project Room Contents (04 Jan 2017 01:56PM ET)

M0430	Recorder/ Player, Digital, Video, DVD	1	EA	VV	.	A	7100
M0506	Television, Flat Screen	1	EA	VV	.	A	7730
UCE05	Basket, Wastepaper	1	EA	VV	
UCF19	Table, Coffee, Round	2	EA	VV	

Department:	COMMUNITY LIVING CENTER (CLC) (106)	Functional Area:	RESIDENT HOME RESIDENT AREA
Room Code:	CLHDR	Room Area:	530
Agency Room Name:	Dining Room	Staff:	0
Criteria Room Name:	Dining Room	Blueprint #:	

JSN	Content Name	Qty	Unit Of Issue	Log Cat/ Acq Code	Util1	Util2	Util3	Util4	Util5	Util6	NSN
F0225	Chair, Dining Room	12	EA	VV	7110
UCF05	Table, Dining, Residential	2	EA	VV	
UCF06	Credenza, Dining Room	1	EA	VV	

Department:	COMMUNITY LIVING CENTER (CLC) (106)	Functional Area:	RESIDENT HOME RESIDENT AREA
Room Code:	CLHKN	Room Area:	360
Agency Room Name:	Kitchen	Staff:	0
Criteria Room Name:	Kitchen	Blueprint #:	

JSN	Content Name	Qty	Unit Of Issue	Log Cat/ Acq Code	Util1	Util2	Util3	Util4	Util5	Util6	NSN
A1000	Extinguisher, Fire	1	EA	VV	5805
A1016	Telephone, Desk, With Speaker	1	EA	VV	5805
A5075	Dispenser, Soap, Disposable	1	EA	VV	4510
A5082	Dispenser, Paper Towel, Sensor, Hands Free	1	EA	CC	4510
C01C0	Cabinet, U/C/B, 1 Shelf, 1 Drawer, 1 DO, 36x18x22	1	EA	CC	6530
C02D0	Cabinet, U/C/B, 4 Drawer, 36x24x22	3	EA	CC	6530
C03E0	Cabinet, U/C/B, 1 Shelf, 1 Drawer, 2 DO, 36x30x22	5	EA	CC	6530
C05P0	Cabinet, Sink, U/C/B, 2 Door, 36x48x22	1	EA	CC	6530

Project Room Contents (04 Jan 2017 01:56PM ET)

CS250	Sink, SS, Single Compartment, 6x12x9 ID	1	EA	CC	D	6530
CT020	Countertop, Solid Surface	70	LF	CC	6530
F0280	Chair, Swivel, Low Back	1	EA	VV	7110
F2010	Basket, Wastepaper, Step-On	1	EA	VV	7240007883953
F3200	Clock, Battery, 12" Diameter	1	EA	VV	6645
K1550	Brewer, Coffee, Auto, Elect, 3 Burner, Side/Side	1	EA	VC	B	A	7310
K4665	Oven, Microwave, Consumer	1	EA	VV	.	A	7310
K6660	Sink, Scullery, Triple Compartment	1	EA	CC	D	7310
K8250	Toaster, Pop-Up, 4 Slice, Electric	1	EA	VV	.	C	7310
P2100	Disposal, Garbage, 2 HP Motor	1	EA	CC	B	C	4540
R6200	Refrigerator, U/C or F/S, 5 Cu Ft	1	EA	VV	.	A	4110
UCE02	Oven, Convection, Double, Recessed	1	EA	CC	.	C	J	
UCE03	Cooktop, Induction	1	EA	CC	.	C	
UCE04	Dishwasher, Undercounter, Commercial	2	EA	CC	D	A	
UCE08	Cabinet, Trash and Recycling Center	2	EA	CC	
UCE12	Ice Maker, Flaked, with Dispenser, Countertop	1	EA	CC	.	A	
UCE14	Refrigerator-Freezer, 23 cu ft, French Doors	1	EA	CC	.	A	6530
UCE19	Cabinet, W/H, 2 Shelf, 2 DO, 38x30x13	6	EA	CC	6530
UCE22	Cabinet, W/H, 2 Shelf, 2 DO, 38x36x13	1	EA	CC	6530
UCF04	Chair, Kitchen Counter	2	EA	VV	
UCK03	Hood, Exhaust, Kitchen, Commercial	1	EA	CC	.	A	E	

Department:	COMMUNITY LIVING CENTER (CLC) (106)	Functional Area:	RESIDENT HOME RESIDENT AREA
Room Code:	CLHDN	Room Area:	180
Agency Room Name:	Den	Staff:	0
Criteria Room Name:	Den	Blueprint #:	

JSN	Content Name	Qty	Unit Of Issue	Log Cat/ Acq Code	Util1	Util2	Util3	Util4	Util5	Util6	NSN
A5212	Bracket, Television, Wall-Mounted, Tilt/Angle	1	EA	VV	
A5220	Bracket, Television, Wall Backing	1	EA	CC	6520
A6046	Artwork, Decorative, With Frame	1	EA	VV	6230

Project Room Contents (04 Jan 2017 01:56PM ET)

F0255	Chair, Easy	2	EA	VV	7100
F0280	Chair, Swivel, Low Back	1	EA	VV	7110
F0370	Sofa, Sleeper, Upholstered	1	EA	VV	
F0710	Table, Computer, With Print Shelf	1	EA	VV	7110
F0740	Table, Occasional, Lamp	2	EA	VV	7110
F2420	Lamp, Table, With Shade	2	EA	VV	.	A	6230
F3200	Clock, Battery, 12" Diameter	1	EA	VV	6645
M0506	Television, Flat Screen	1	EA	VV	.	A	7730
M1801	Computer, Microprocessing, w/Flat Panel Monitor	1	EA	VV	.	A	7025
UCE05	Basket, Wastepaper	1	EA	VV	
UCF07	Lamp, Task, Computer Desk	1	EA	VV	.	A	

Department:	COMMUNITY LIVING CENTER (CLC) (106)	Functional Area:	RESIDENT HOME RESIDENT AREA
Room Code:	CLHLD	Room Area:	135
Agency Room Name:	Laundry	Staff:	0
Criteria Room Name:	Laundry	Blueprint #:	

JSN	Content Name	Qty	Unit Of Issue	Log Cat/ Acq Code	Util11	Util12	Util13	Util14	Util15	Util16	NSN
A5075	Dispenser, Soap, Disposable	1	EA	VV	4510
A5080	Dispenser, Paper Towel, SS, Surface Mounted	1	EA	CC	4510
C04E0	Cabinet, U/C/B, 1 Shelf, 1 Drawer, 2 DO, 36x36x22	1	EA	CC	6530
CT020	Countertop, Solid Surface	1	LF	CC	6530
F2015	Basket, Wastepaper, Metal/Plastic, 2 Swinging Doors	1	EA	VV	7240006340133
M2300	Washer, Clothes, Automatic	2	EA	VV	D	A	3510
M2400	Dryer, Clothes, Automatic, Electric, Household	2	EA	VV	.	C	.	.	.	E	3510
M3070	Hamper, Linen, Mobile, w/Lid	1	EA	VV	7240
P8710	Utility Center, Plumbing Connection	2	EA	CC	D	4100
UCF10	Shelf, Upper	2	EA	CC	
UCF11	Shelf With Hanging Rod	1	EA	CC	
UCP06	Sink, Utility, Laundry, Stand Alone	1	EA	CC	D	

Project Room Contents (04 Jan 2017 01:56PM ET)

Department: COMMUNITY LIVING CENTER (CLC) (106) Room Code: CLHBS Agency Room Name: Bathing Suite Criteria Room Name: Bathing Suite		Functional Area: RESIDENT HOME RESIDENT AREA Room Area: 140 Staff: 0 Blueprint #:									
JSN	Content Name	Qty	Unit Of Issue	Log Cat/ Acq Code	Util1	Util2	Util3	Util4	Util5	Util6	NSN
A1066	Mirror, Float Glass, With SS Frame	1	EA	CC	7105
A5075	Dispenser, Soap, Disposable	1	EA	VV	4510
A5080	Dispenser, Paper Towel, SS, Surface Mounted	1	EA	CC	4510
A5115	Grab Bar, Flip-Up, Heavy Duty	2	EA	CC	
A5195	Dispenser, Toilet Tissue, SS, 1-Roll, Surface MNNTD	1	EA	CC	4510007026934
A5205	Bar, Towel, 1" Diameter, SS, Surface Mounted	2	EA	CC	4510
A6046	Artwork, Decorative, With Frame	1	EA	VV	6230
CT020	Countertop, Solid Surface	1	LF	CC	6530
P3070	Lavatory, Vitreous China, Under or Counter Top Mtd	1	EA	CC	D	4510
P9056	Toilet, Floor Mounted, Bariatric	1	EA	CC	B	
UCE05	Basket, Wastepaper	1	EA	VV	
UCF12	Chair, Salon	1	EA	VV	
UCF16	Cabinet, Linen	1	EA	VV	
UCP02	Bathtub, Geriatric	1	EA	CC	D	A	
UCP03	Sink, Shampooing	1	EA	CC	D	

Department: COMMUNITY LIVING CENTER (CLC) (106) Room Code: CLHFY Agency Room Name: Foyer Criteria Room Name: Foyer		Functional Area: RESIDENT HOME RESIDENT AREA Room Area: 80 Staff: 0 Blueprint #:									
JSN	Content Name	Qty	Unit Of Issue	Log Cat/ Acq Code	Util1	Util2	Util3	Util4	Util5	Util6	NSN
A6046	Artwork, Decorative, With Frame	1	EA	VV	6230

Project Room Contents (04 Jan 2017 01:56PM ET)

Department: COMMUNITY LIVING CENTER (CLC) (106) Room Code: CLHAS Agency Room Name: Alcove, Sitting (4 Rooms) Criteria Room Name: Alcove, Sitting (4 Rooms)		Functional Area: RESIDENT HOME RESIDENT AREA Room Area: 125 Staff: 0 Blueprint #:									
JSN	Content Name	Qty	Unit Of Issue	Log Cat/ Acq Code	Util1	Util2	Util3	Util4	Util5	Util6	NSN
F0115	Bookcase, Open, 5 Shelf	6	EA	VV	7110
F0255	Chair, Easy	9	EA	VV	7100
F0375	Sofa, Upholstered	1	EA	VV	7110
UCF02	Sofa, Loveseat, 2-Person	2	EA	VV	
UCF03	Table, Side	9	EA	VV	

Department: COMMUNITY LIVING CENTER (CLC) (106) Room Code: CLHPY Agency Room Name: Pantry Criteria Room Name: Pantry		Functional Area: RESIDENT HOME SUPPORT AREA Room Area: 80 Staff: 0 Blueprint #:	
---	--	--	--

JSN	Content Name	Qty	Unit Of Issue	Log Cat/ Acq Code	Util1	Util2	Util3	Util4	Util5	Util6	NSN
M2055	Shelving, Storage, Wire, CRS, w/Adjustable Shelves	3	EA	VV	7100
R6100	Freezer, Food, Upright, CRS, 23 CUFT	1	EA	VV	.	A	4110
R7050	Refrigerator, 25 Cubic Feet	1	EA	VV	.	A	4110

Department: COMMUNITY LIVING CENTER (CLC) (106) Room Code: CLKH Agency Room Name: Closet, Kitchen Housekeeping Criteria Room Name: Closet, Kitchen Housekeeping		Functional Area: RESIDENT HOME SUPPORT AREA Room Area: 15 Staff: 0 Blueprint #:	
--	--	--	--

JSN	Content Name	Qty	Unit Of Issue	Log Cat/ Acq Code	Util1	Util2	Util3	Util4	Util5	Util6	NSN

Project Room Contents (04 Jan 2017 01:56PM ET)

M2080	Shelving, Storage, Solid, CRS, w/Adjustable Shelves	1	EA	VV	7100
<i>Shelving versus built-in shelves</i>																				

Department:	COMMUNITY LIVING CENTER (CLC) (106)	Functional Area:	RESIDENT HOME SUPPORT AREA
Room Code:	SPHC1	Room Area:	60
Agency Room Name:	Housekeeping Aides Closet (HAC)	Staff:	0
Criteria Room Name:	Housekeeping Aides Closet (HAC)	Blueprint #:	

JSN	Content Name	Qty	Unit Of Issue	Log Cat/ Acq Code	Util1	Util2	Util3	Util4	Util5	Util6	NSN
A5075	Dispenser, Soap, Disposable	1	EA	VV	4510
A5080	Dispenser, Paper Towel, SS, Surface Mounted	1	EA	CC	4510
A5107	Dispenser, Glove, Surgical/Examination, Wall Mntd	1	EA	VV	4510
A5135	Shelf, Utility W/ Mop/Broom Holders, SS, Surf Mntd	1	EA	CC	7125
F0500	Cart, Janitor's	1	EA	VV	7110
F0505	Bucket, Mop, With Wringer, 26 Quart	1	EA	VV	7100
P2000	Eyewash, Wall Mounted, Hands-Free	1	EA	CC	B	4510
P2450	Valve, Mixing, Thermostatic	1	EA	CC	A	6530
P4700	Sink, Mop, Molded Stone	1	EA	CC	D	4510

Department:	COMMUNITY LIVING CENTER (CLC) (106)	Functional Area:	RESIDENT HOME SUPPORT AREA
Room Code:	SPCU1	Room Area:	60
Agency Room Name:	Utility, Clean	Staff:	0
Criteria Room Name:	Utility, Clean	Blueprint #:	

JSN	Content Name	Qty	Unit Of Issue	Log Cat/ Acq Code	Util1	Util2	Util3	Util4	Util5	Util6	NSN
F0515	Cart, Supply, Linen	1	EA	VV	7100
M2055	Shelving, Storage, Wire, CRS, w/Adjustable Shelves	2	EA	VV	7100

Project Room Contents (04 Jan 2017 01:56PM ET)

Department: COMMUNITY LIVING CENTER (CLC) (106) Room Code: SPSU1 Agency Room Name: Utility, Soiled Criteria Room Name: Utility, Soiled		Functional Area: RESIDENT HOME SUPPORT AREA Room Area: 80 Staff: 0 Blueprint #:									
JSN	Content Name	Qty	Unit Of Issue	Log Cat/ Acq Code	Util1	Util2	Util3	Util4	Util5	Util6	NSN
A1012	Telephone, Wall Mounted, 1 Line	1	EA	VV	5805
A5075	Dispenser, Soap, Disposable	2	EA	VV	4510
A5077	Dispenser, Hand Sanitizer, Hands-Free	1	EA	VV	4510
A5080	Dispenser, Paper Towel, SS, Surface Mounted	2	EA	CC	4510
A5106	Waste Disposal Unit, Sharps w/Glove Dispenser	1	EA	VV	6530
C04F0	Cabinet, U/C/B, 1 Shelf, 2 Half DR, 2 DO, 36x36x22	1	EA	CC	6530
C05P0	Cabinet, Sink, U/C/B, 2 Door, 36x48x22	1	EA	CC	6530
CS200	Sink, SS, Single Compartment, 12x28x16 ID	1	EA	CC	D	6530
CT050	Countertop, Stainless Steel	7	LF	CC	6530
F2020	Can, Trash, 44 Gallon	1	EA	VV	7100
M3070	Hamper, Linen, Mobile, w/Lid	1	EA	VV	7240
M3072	Frame, Infectious Waste Bag w/Lid	1	EA	VV	7240
P2000	Eyewash, Wall Mounted, Hands-Free	1	EA	CC	B	4510
P2450	Valve, Mixing, Thermostatic	1	EA	CC	A	6530
P3100	Lavatory, Vitreous China, Slab Type	1	EA	CC	D	4510

Department: COMMUNITY LIVING CENTER (CLC) (106) Room Code: CLHS1 Agency Room Name: Storage, Clean Linen Criteria Room Name: Storage, Clean Linen		Functional Area: RESIDENT HOME SUPPORT AREA Room Area: 40 Staff: 0 Blueprint #:									
JSN	Content Name	Qty	Unit Of Issue	Log Cat/ Acq Code	Util1	Util2	Util3	Util4	Util5	Util6	NSN
F0515	Cart, Supply, Linen	1	EA	VV	7100

Project Room Contents (04 Jan 2017 01:56PM ET)

Department: COMMUNITY LIVING CENTER (CLC) (106) Room Code: CLHMD Agency Room Name: Medication Room Criteria Room Name: Medication Room		Functional Area: RESIDENT HOME SUPPORT AREA Room Area: 80 Staff: 0 Blueprint #:									
JSN	Content Name	Qty	Unit Of Issue	Log Cat/ Acq Code	Util1	Util2	Util3	Util4	Util5	Util6	NSN
A1014	Telephone, Wall Mounted, 1 Line, With Speaker	1	EA	VV	5805
A5075	Dispenser, Soap, Disposable	1	EA	VV	4510
A5077	Dispenser, Hand Sanitizer, Hands-Free	1	EA	VV	4510
A5082	Dispenser, Paper Towel, Sensor, Hands Free	1	EA	CC	4510
A5106	Waste Disposal Unit, Sharps w/Glove Dispenser	1	EA	VV	6530
CT020	Countertop, Solid Surface	2	LF	CC	6530
E0957	Cart, Medication, Mobile, 42"H x 32"W x 22"D	1	EA	VV	6530
E0963	Cart, General Storage, Mobile	1	EA	VV	6530
F2010	Basket, Wastepaper, Step-On	1	EA	VV	7240007883953
F3200	Clock, Battery, 12" Diameter	1	EA	VV	6645
M3150	Distribution System, Medication, Automatic	1	EA	VV	B	A	6530
P3200	Lavatory, Vitreous China, Slab Type w/Sens Op Fauc	1	EA	CC	D	4510
R6200	Refrigerator, U/C or F/S, 5 Cu Ft	1	EA	VV	.	A	4110

Department: COMMUNITY LIVING CENTER (CLC) (106) Room Code: CLHS2 Agency Room Name: Storage, Home Criteria Room Name: Storage, Home		Functional Area: RESIDENT HOME SUPPORT AREA Room Area: 80 Staff: 0 Blueprint #:									
JSN	Content Name	Qty	Unit Of Issue	Log Cat/ Acq Code	Util1	Util2	Util3	Util4	Util5	Util6	NSN
F2017	Waste Receptacle, 24 GAL	1	EA	VV	7520
M2090	Shelving, Storage, Warehouse	1	EA	VV	7125010995763
M2115	Truck, Hand, 2 Wheel	1	EA	VV	3920

Project Room Contents (04 Jan 2017 01:56PM ET)

Department: COMMUNITY LIVING CENTER (CLC) (106) Room Code: CLHS3 Agency Room Name: Storage, Recreation Criteria Room Name: Storage, Recreation		Functional Area: RESIDENT HOME SUPPORT AREA Room Area: 40 Staff: 0 Blueprint #:									
JSN	Content Name	Qty	Unit Of Issue	Log Cat/ Acq Code	Util1	Util2	Util3	Util4	Util5	Util6	NSN
M2080	Shelving, Storage, Solid, CRS, w/Adjustable Shelves	1	EA	VV	7100

Department: COMMUNITY LIVING CENTER (CLC) (106) Room Code: CLHS4 Agency Room Name: Storage, Equipment Criteria Room Name: Storage, Equipment		Functional Area: RESIDENT HOME SUPPORT AREA Room Area: 120 Staff: 0 Blueprint #:	
---	--	---	--

JSN	Content Name	Qty	Unit Of Issue	Log Cat/ Acq Code	Util1	Util2	Util3	Util4	Util5	Util6	NSN
M4045	Scale, Wheelchair, Portable, 1000 lb Capacity	1	EA	VV	6530
M4705	Wheelchair, Patient Transport, Folding	1	EA	VV	6530
M4710	Wheelchair, Patient, Bariatric, Transport, Folding	1	EA	VV	6530
M8085	Lift, Patient, Electric, 600 Lb Cap, Bariatric	1	EA	VC	.	A	6530

Department: COMMUNITY LIVING CENTER (CLC) (106) Room Code: CLHGR Agency Room Name: Garage / Receiving Criteria Room Name: Garage / Receiving		Functional Area: RESIDENT HOME SUPPORT AREA Room Area: 240 Staff: 0 Blueprint #:	
---	--	---	--

JSN	Content Name	Qty	Unit Of Issue	Log Cat/ Acq Code	Util1	Util2	Util3	Util4	Util5	Util6	NSN
F2017	Waste Receptacle, 24 GAL	1	EA	VV	7520
M2090	Shelving, Storage, Warehouse	3	EA	VV	7125010995763
M2115	Truck, Hand, 2 Wheel	1	EA	VV	3920

Project Room Contents (04 Jan 2017 01:56PM ET)

Department:	COMMUNITY LIVING CENTER (CLC) (106)	Functional Area:	RESIDENT HOME SUPPORT AREA
Room Code:	CLHGM	Room Area:	40
Agency Room Name:	Gas Manifold Room	Staff:	0
Criteria Room Name:	Gas Manifold Room	Blueprint #:	

JSN	Content Name	Qty	Unit Of Issue	Log Cat/ Acq Code	Util1	Util2	Util3	Util4	Util5	Util6	NSN
UCE00	No Medical Equipment	1	EA	VV	

Department:	COMMUNITY LIVING CENTER (CLC) (106)	Functional Area:	RESIDENT HOME SUPPORT AREA
Room Code:	SPCC1	Room Area:	20
Agency Room Name:	Alcove, Crash Cart	Staff:	0
Criteria Room Name:	Alcove, Crash Cart	Blueprint #:	

JSN	Content Name	Qty	Unit Of Issue	Log Cat/ Acq Code	Util1	Util2	Util3	Util4	Util5	Util6	NSN
E0954	Cart, Emergency, Mobile, 66"H x 32"W x 22"D	1	EA	VV	6530
M1100	Resuscitator, Bag-Mask, Hand Operated	1	EA	VV	6515
M7660	Defibrillator/Monitor/Recorder, Portable	1	EA	VV	.	A	6530013901460
UCE10	Aspirator, Suction, Portable w-Battery	1	EA	VV	.	A	

Department:	COMMUNITY LIVING CENTER (CLC) (106)	Functional Area:	RESIDENT HOME STAFF AND ADMINISTRATIVE AREA
Room Code:	CLHOF	Room Area:	100
Agency Room Name:	Home Office	Staff:	0
Criteria Room Name:	Home Office	Blueprint #:	

JSN	Content Name	Qty	Unit Of Issue	Log Cat/ Acq Code	Util1	Util2	Util3	Util4	Util5	Util6	NSN
A1016	Telephone, Desk, With Speaker	1	EA	VV	5805

Project Room Contents (04 Jan 2017 01:56PM ET)

A5145	Hook, Garment, Double, SS, Surface Mounted	1	EA	CC	5340007541678
CT030	Countertop, High Pressure Laminate	1	LF	CC	6530
E0210	Worksurface, w/Overhead Cab, Wall Mtd, 48" W	1	EA	VV	.	A	6530
F0210	Chair, Side, Without Arms	1	EA	VV	7110011885296
F0275	Chair, Swivel, High Back	1	EA	VV	7110
F0420	Cabinet, Filing, Lateral, Half Height	1	EA	VV	7110
F2420	Lamp, Table, With Shade	1	EA	VV	.	A	6230
F3200	Clock, Battery, 12" Diameter	1	EA	VV	6645
M1801	Computer, Microprocessing, w/Flat Panel Monitor	1	EA	VV	.	A	7025
M1840	Printer/Copier/Fax Combination	1	EA	VV	.	A	7100
UCE05	Basket, Wastepaper	1	EA	VV	

Department:	COMMUNITY LIVING CENTER (CLC) (106)	Functional Area:	RESIDENT HOME STAFF AND ADMINISTRATIVE AREA
Room Code:	SALG1	Room Area:	180
Agency Room Name:	Lounge, Staff	Staff:	0
Criteria Room Name:	Lounge, Staff	Blueprint #:	

JSN	Content Name	Qty	Unit Of Issue	Log Cat/ Acq Code	Util1	Util2	Util3	Util4	Util5	Util6	NSN
A1012	Telephone, Wall Mounted, 1 Line	1	EA	VV	5805
A1030	Locker, 2 Person, Over/Under	10	EA	VV	7125
A1080	Mirror, Posture, Wall Mounted	1	EA	CC	6530
A5075	Dispenser, Soap, Disposable	1	EA	VV	4510
A5080	Dispenser, Paper Towel, SS, Surface Mounted	1	EA	CC	4510
A5145	Hook, Garment, Double, SS, Surface Mounted	1	EA	CC	5340007541678
A5212	Bracket, Television, Wall-Mounted, Tilt/Angle	1	EA	VV	
A5220	Bracket, Television, Wall Backing	1	EA	CC	6520
C02C0	Cabinet, U/C/B, 1 Shelf, 1 Drawer, 1 DO, 36x24x22	1	EA	CC	6530
C02D0	Cabinet, U/C/B, 4 Drawer, 36x24x22	1	EA	CC	6530
C04P0	Cabinet, Sink, U/C/B, 2 Door, 36x36x22	1	EA	CC	6530
CB020	Cabinet, W/H, 2 Shelf, 1 DO, Sloping Top, 38x24x13	2	EA	CC	6530
CS010	Sink, SS, Single Compartment, 7.5x12x12 ID	1	EA	CC	D	6530

Project Room Contents (04 Jan 2017 01:56PM ET)

CT020	Countertop, Solid Surface	7	LF	CC	6530
F0225	Chair, Dining Room	4	EA	VV	7110
F0795	Table, Dining	1	EA	VV	7110
F2015	Basket, Wastepaper, Metal/Plastic, 2 Swinging Doors	1	EA	VV	7240006340133
F3065	Whiteboard/Bulletin Board, Combination	1	EA	VV	7110
F3200	Clock, Battery, 12" Diameter	1	EA	VV	6645
K1552	Brewer, Coffee, Auto, Elect, 3 Burner, Front/Back	1	EA	VV	J	A	7310
K4665	Oven, Microwave, Consumer	1	EA	VV	.	A	7310
M0506	Television, Flat Screen	1	EA	VV	.	A	7730
R7250	Refrigerator/Freezer, 20 Cubic Feet	1	EA	VV	.	A	4110

Department:	COMMUNITY LIVING CENTER (CLC) (106)	Functional Area:	RESIDENT HOME STAFF AND ADMINISTRATIVE AREA
Room Code:	TNPG1	Room Area:	60
Agency Room Name:	Toilet, Staff	Staff:	0
Criteria Room Name:	Toilet, Universal	Blueprint #:	

JSN	Content Name	Qty	Unit Of Issue	Log Cat/ Acq Code	Util1	Util2	Util3	Util4	Util5	Util6	NSN
A1067	Mirror, Float Glass, ADA Accessible	1	EA	CC	7105
A5075	Dispenser, Soap, Disposable	1	EA	VV	4510
A5082	Dispenser, Paper Towel, Sensor, Hands Free	1	EA	CC	4510
A5090	Disposal, Sanitary Napkin, SS, Surface Mounted	1	EA	CC	7240
A5109	Grab Bar, 1-1/4" Dia., SS, 2 Wall, W/C Accessible	1	EA	CC	6530
A5145	Hook, Garment, Double, SS, Surface Mounted	1	EA	CC	5340007541678
A5200	Dispenser, Toilet Tissue, SS, 2-Roll, Surface Mntd	1	EA	CC	4510007026934
F2010	Basket, Wastepaper, Step-On	1	EA	VV	7240007883953
P3200	Lavatory, Vitreous China, Slab Type w/Sens Op Fauc	1	EA	CC	D	4510
UHDR5	Nurse Call	1	EA	CC	
UHDR6	Toilet, Floor Mounted	1	EA	CC	

Project Room Contents (04 Jan 2017 01:56PM ET)

Report Parameters

Sorted By: Selection Tree



U.S. Department
of Veterans Affairs

3.0 PROPOSED LAYOUT

PROTOTYPE

SMALL HOUSE MODEL

3.1. PROPOSED LAYOUT OPTION 1.....	3-3
3.2. PROPOSED LAYOUT OPTION 2.....	3-7
3.3. CLERESTORY SECTION.....	3-11

THIS PAGE WAS INTENTIONALLY LEFT BLANK

3.0 PROPOSED LAYOUT

3.1. Proposed Layout Option 1

The diagram of the Option 1 plan has the resident rooms grouped in two “L’s” around the core social spaces of the House: the Kitchen and Dining Room. The L’s create a looping corridor which completely encircles the Kitchen and Dining room in order to minimize dead-end corridors. Residents can be confused when they’re faced with a dead-end, creating a one-way migration. The solution to this is looped corridors which gives mental and emotional freedom to residents. The corridor includes four Sitting Alcoves which act both as a resting point along the loop and also as a transitional social space between each resident room and the common areas. The Sitting Alcoves are sized proportionately based on the number of resident rooms that open to the alcove, thus a sitting alcove situated in front of a group of two resident rooms is half as large as an alcove situated in front of four resident rooms.

The Living Room is a core social space and it has been positioned at an outside corner of the plan as a node between the two groupings of resident rooms. This accomplishes several objectives: first and foremost, the move allows natural light with views to enter the Living Room on two sides; it allows the room to open onto a corresponding outdoor patio; and finally, the corner being an open space allows light to permeate the center of the Home into the Kitchen and Dining Room.

On the other side of the Kitchen and Dining Room is the Main Entry to the House. This includes a Foyer and a Vestibule, which are inset from the overall perimeter of the House to create a covered entry on the exterior with a roof overhang. The Foyer is another opportunity to bring natural light into the Kitchen and Dining Room, so they receive natural light from two sides creating a general sense of openness across the entire House. The Den is also situated near the entry, which allows it to be close to the center of activity within the Home, and therefore readily accessible, while still affording it natural light and a view to the exterior. This not only makes the Den a more comfortable and welcoming room for socializing in small groups or visiting with family, but also allows it to double as an overnight room for family members that stay more than one day.

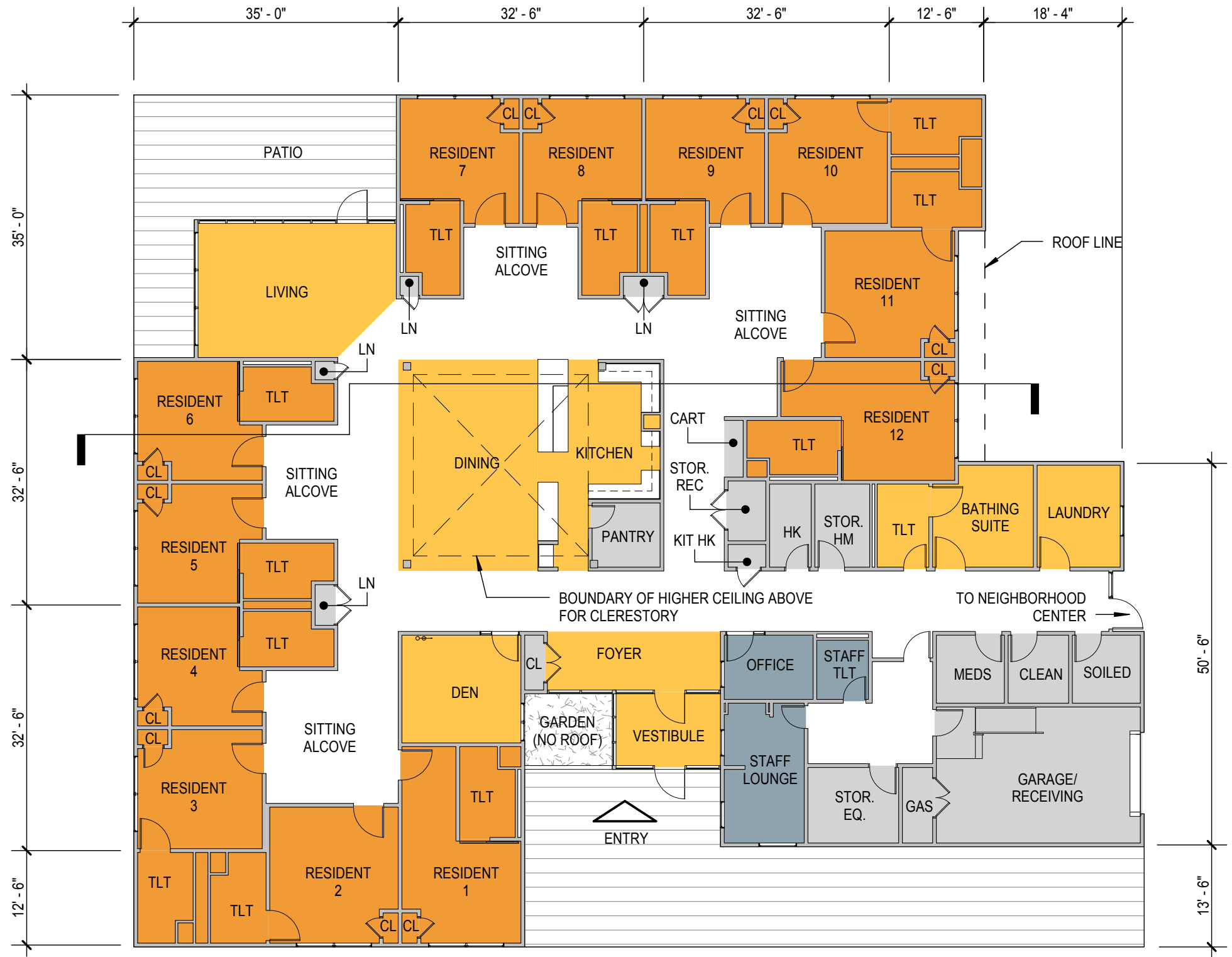
At the opposite end of the plan from the Living Room and at the connection to the Neighborhood Center is the support area. This includes the Garage, which also serves as the support entry to the House, covered parking, and the receiving space. Adjacent to the Garage are other support spaces such as the Clean and Soiled Utility rooms that will be frequently accessed from the service entry, and will not be used by residents. Included in the support area are staff spaces. The House Office is located between the support zone and the Foyer to provide staff with easy access to both public and service areas. This allows the Office to act as a security point for the Entry and Foyer, with a window looking from the room into the Foyer and front door. The Bathing Suite and Laundry are also located near the support spaces, though they open on to the corridor which connects the House to a Neighborhood Center, which thus is a corridor that will be frequented by residents. The plan takes advantage of the location of the Bathing Suite Toilet Room allowing it to double as the Visitor Toilet to reduce the number of toilet rooms overall within the House.

The plan also takes advantage of the typical resident bathroom, as shown on the Resident Room Template in the Small House Model Design Guide, which has a small niche carved out of it to be used as a linen closet outside of the room. When two resident rooms back up against each other, the two niches can create a larger closet. These closets, located throughout the House, become decentralized linen storage. This allows linens to be distributed on carts less frequently, and provides easy access to staff as they change linens within the resident rooms.

THIS PAGE WAS INTENTIONALLY LEFT BLANK

3.0 PROPOSED LAYOUT

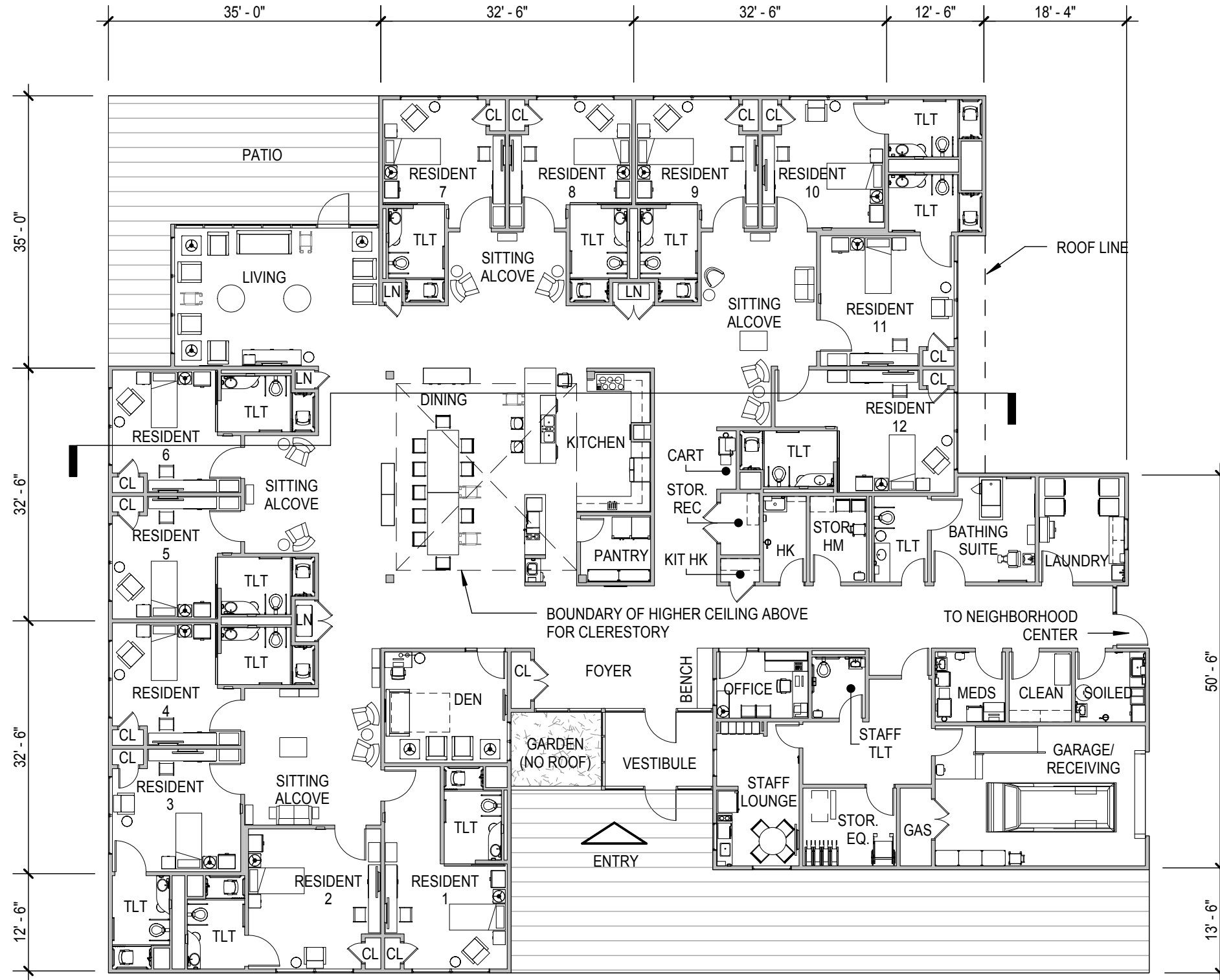
3.2. Proposed Layout Option 1 - Plan



Scale: 1/16" = 1'-0"

3.0 PROPOSED LAYOUT

3.2. Proposed Layout Option 1 - Equipment Plan



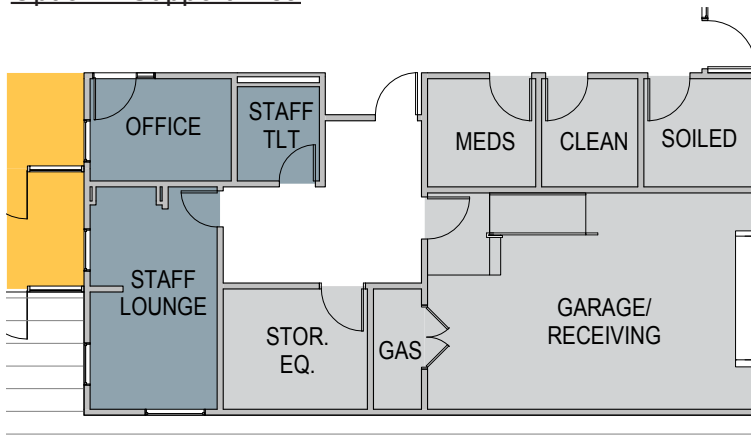
Scale: 1/16" = 1'-0"

3.0 PROPOSED LAYOUT

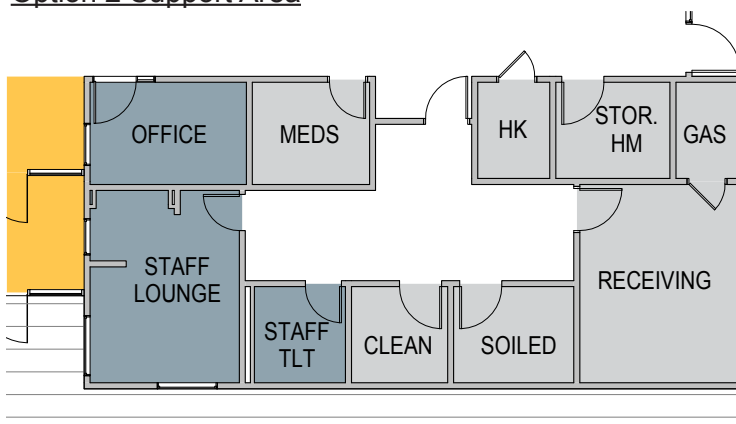
3.2. Proposed Layout Option 2

The diagram of the Option 2 plan is the same as Option 1. The differences between the two plans center around the support area of the House. The major difference is the absence of a Garage in Option 2. As some facilities may not choose to include a Garage, it was a goal that the plan function successfully both with and without a garage. In Option 2, the Garage is replaced with a smaller, exterior Receiving area. The adjoining rooms are arranged to accommodate this difference and to allow for the Medications Room, Clean Utility, and Soiled Utility to be situated with the most convenient access from Receiving.

Option 1 Support Area



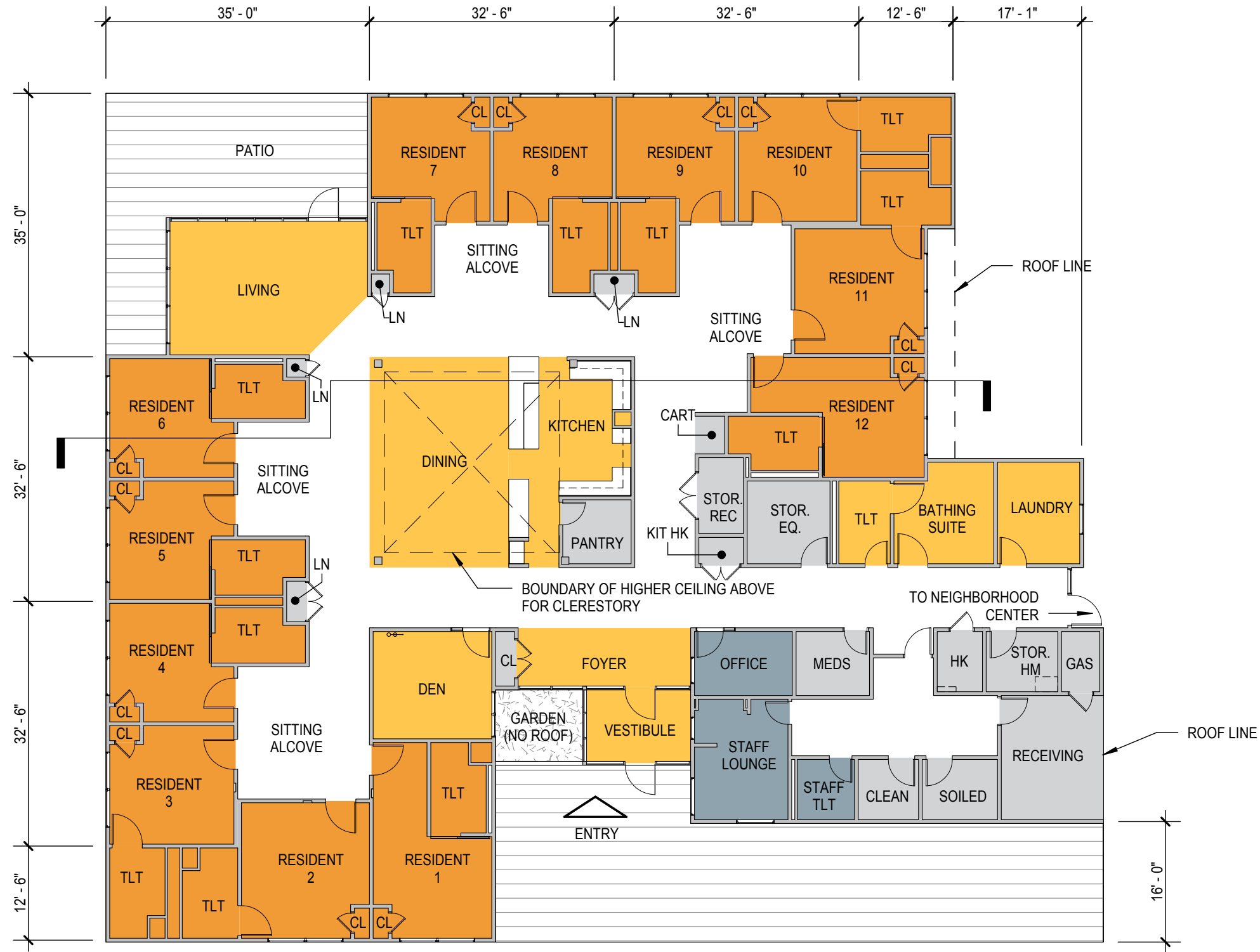
Option 2 Support Area



THIS PAGE WAS INTENTIONALLY LEFT BLANK

3.0 PROPOSED LAYOUT

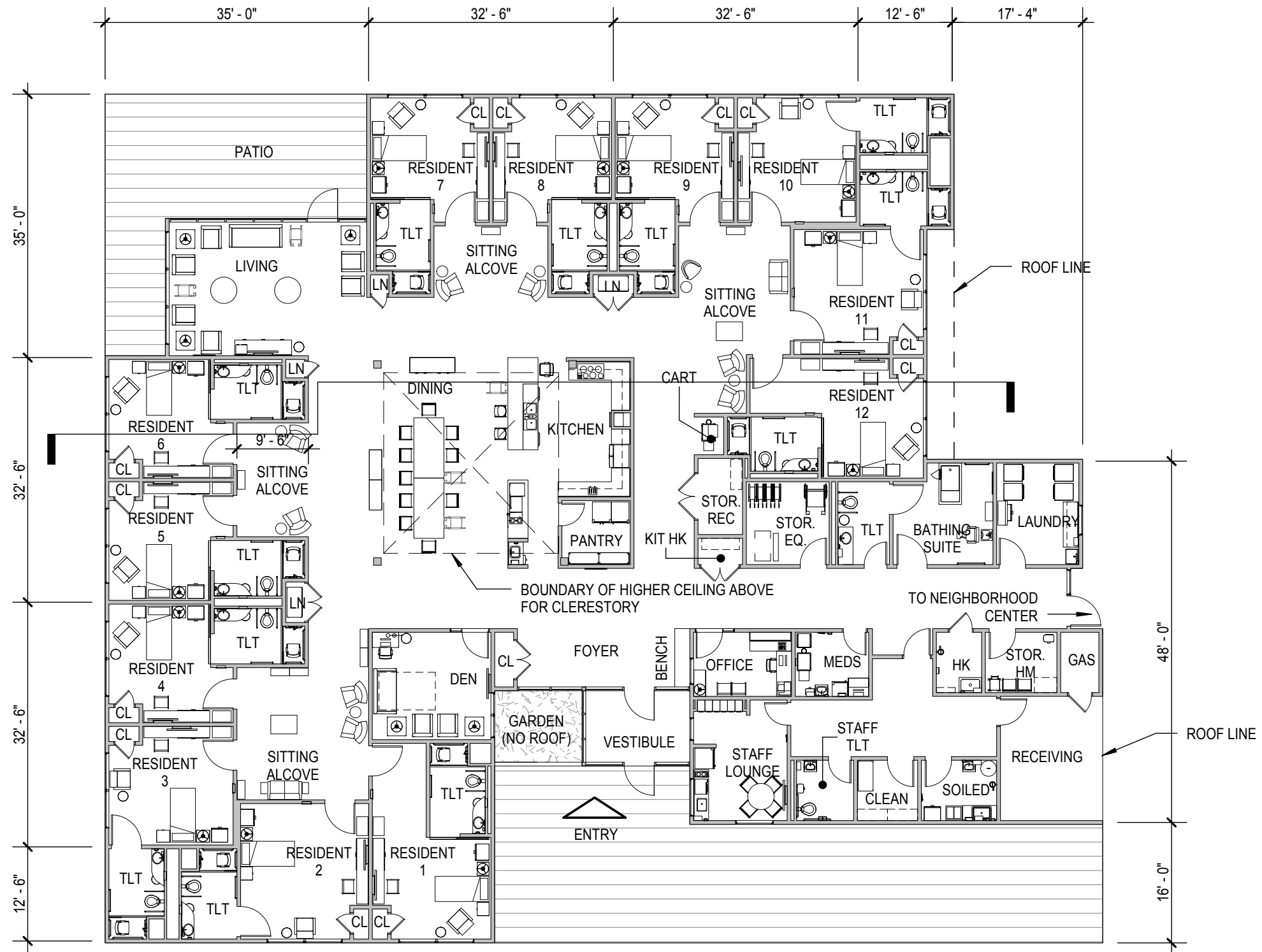
3.3. Proposed Layout Option 2 - Plan



Scale: 1/16" = 1'-0"

3.0 PROPOSED LAYOUT

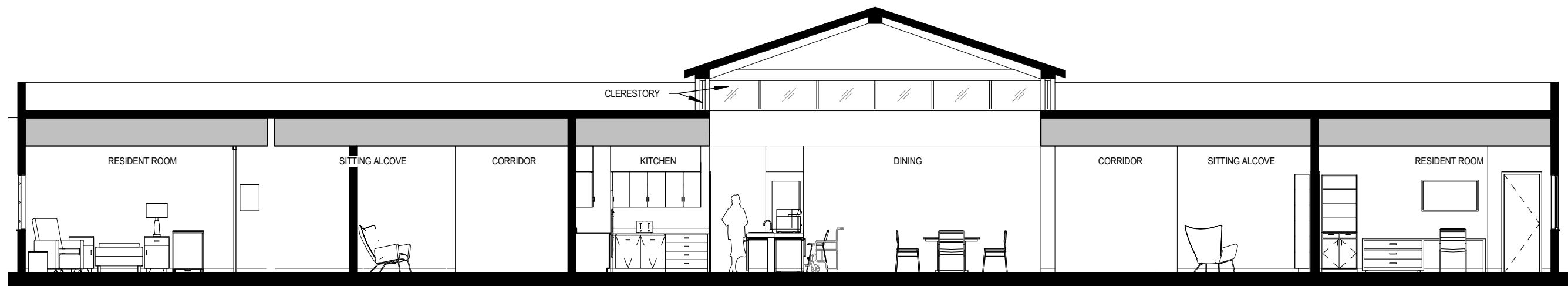
3.3. Proposed Layout Option 2 - Equipment Plan



Scale: 1/16" = 1'-0"

3.0 PROPOSED LAYOUT

3.3. Clerestory Section



0' 4' 8' 32'



Scale: 1/16" = 1'-0"

THIS PAGE WAS INTENTIONALLY LEFT BLANK