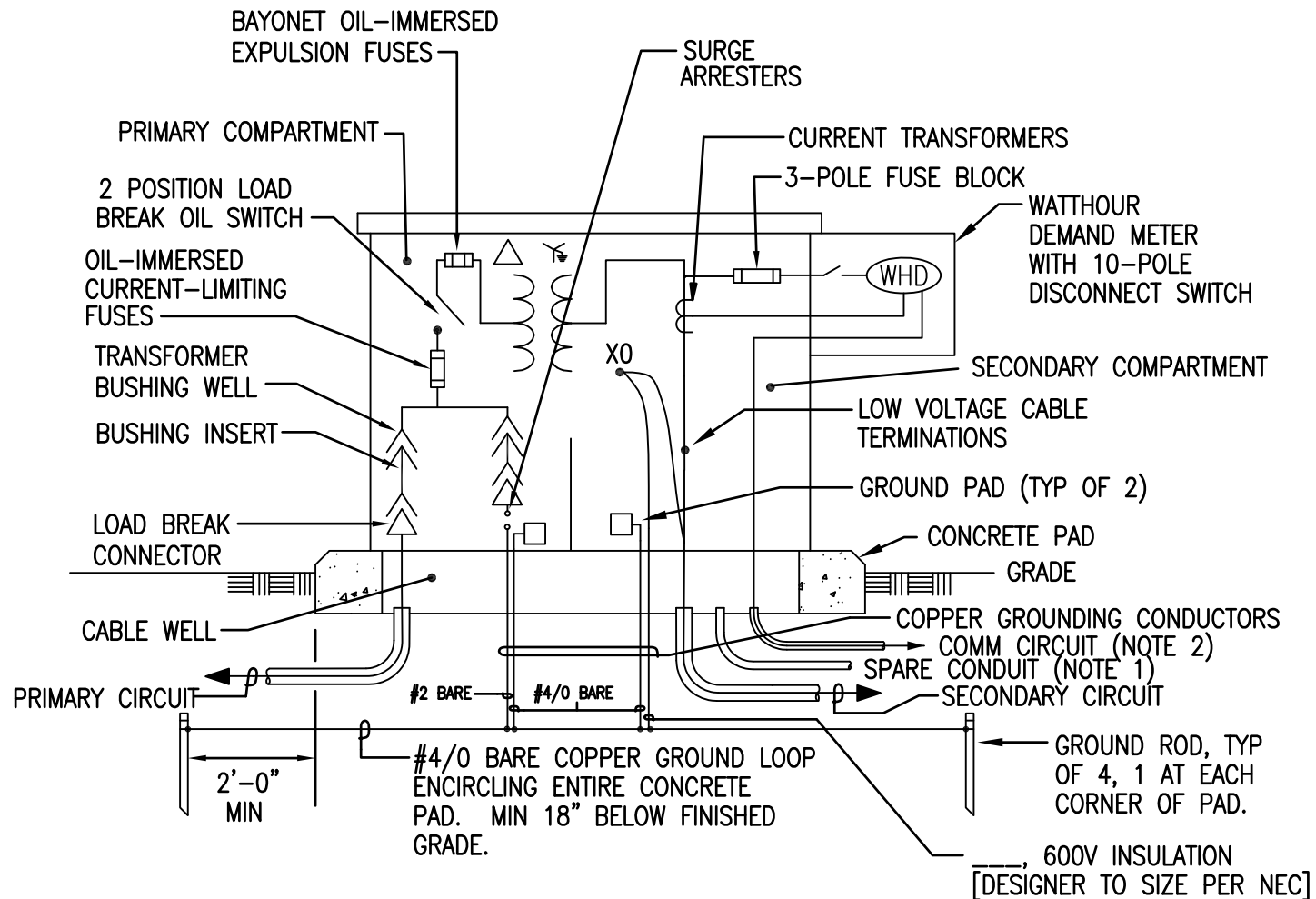


SECTION 26 12 19.10

THREE-PHASE, LIQUID-FILLED, PAD MOUNTED TRANSFORMERS

INDEX OF DETAILS - 08/23 (Rev 11/13/13)

| <i>DETAILS</i> | <i>TITLE</i> |
|-----------------------|---|
| PADMDE1 | Pad-Mtd Transf - Ungrounded/Single Grnded Prim Syst - With Surge Arresters |
| PADMDE2 | Pad-Mtd Transf - Ungrounded/Single Grnded Prim Syst - Without Surge Arresters |
| PADMDE3 | Pad-Mtd Transf - Multi-Grnded Prim Syst (Delta-Wye) - With Surge Arresters |
| PADMDE4 | Pad-Mtd Transf - Multi-Grnded Prim Syst (Delta-Wye) - Without Surge Arresters |
| PADMDE5 | Pad-Mtd Transf - Multi-Grnded Prim Syst (Wye-Wye) - With Surge Arresters |
| PADMDE6 | Pad-Mtd Transf - Multi-Grnded Prim Syst (Wye-Wye) - Without Surge Arresters |
| | |



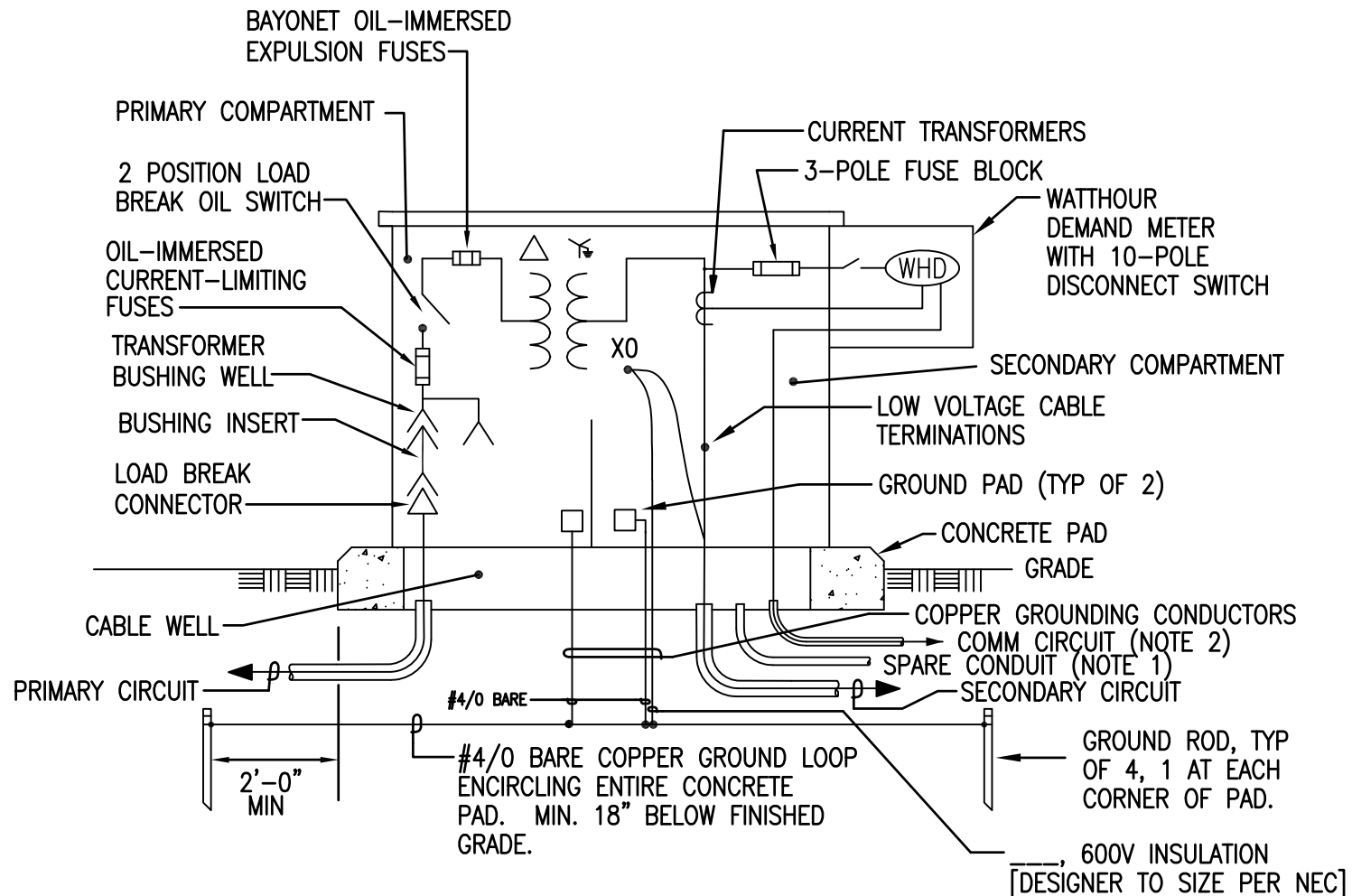
NOTE 1: PROVIDE ONE 1-INCH SPARE CONDUIT STUBBED-OUT FIVE FEET FROM PAD. COORDINATE WITH ACTIVITY FOR ADDITIONAL METERING INPUT (GAS, STEAM OR WATER SYSTEMS).

NOTE 2: PROVIDE THE COMM CIRCUIT TO THE MECHANICAL/ELECTRICAL EQUIPMENT ROOM. COORDINATE WITH ACTIVITY.

PAD-MOUNTED TRANSFORMER DETAIL

NOT TO SCALE

[UNGROUNDED OR SINGLE GROUNDED PRIMARY SYSTEM - WITH SURGE ARRESTERS]



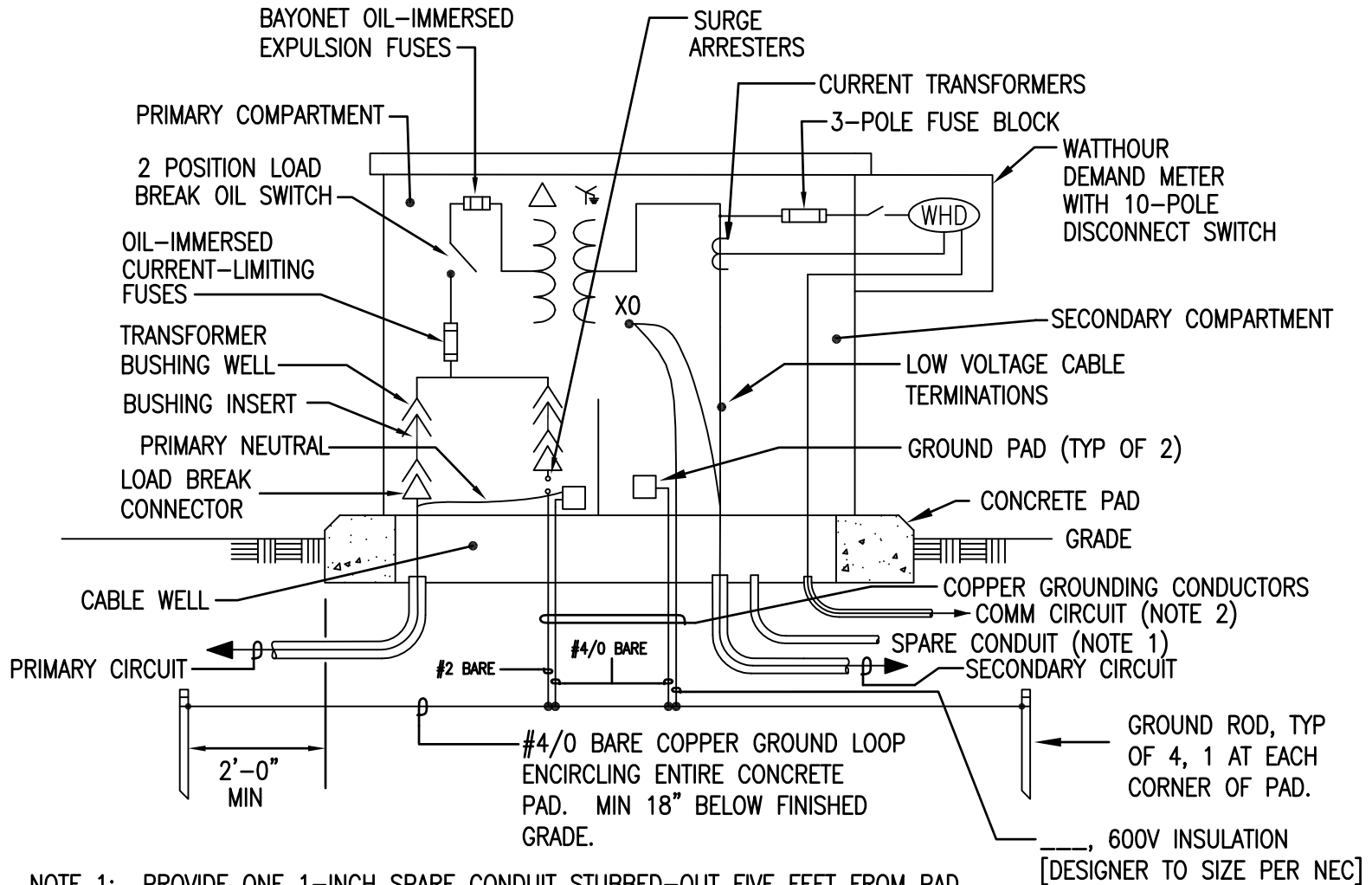
NOTE 1: PROVIDE ONE 1-INCH SPARE CONDUIT STUBBED-OUT FIVE FEET FROM PAD. COORDINATE WITH ACTIVITY FOR ADDITIONAL METERING INPUT (GAS, STEAM OR WATER SYSTEMS).

NOTE 2: PROVIDE THE COMM CIRCUIT TO THE MECHANICAL/ELECTRICAL EQUIPMENT ROOM. COORDINATE WITH ACTIVITY.

PAD-MOUNTED TRANSFORMER DETAIL

NOT TO SCALE

[UNGROUNDED OR SINGLE GROUNDED PRIMARY SYSTEM – WITHOUT SURGE ARRESTERS]



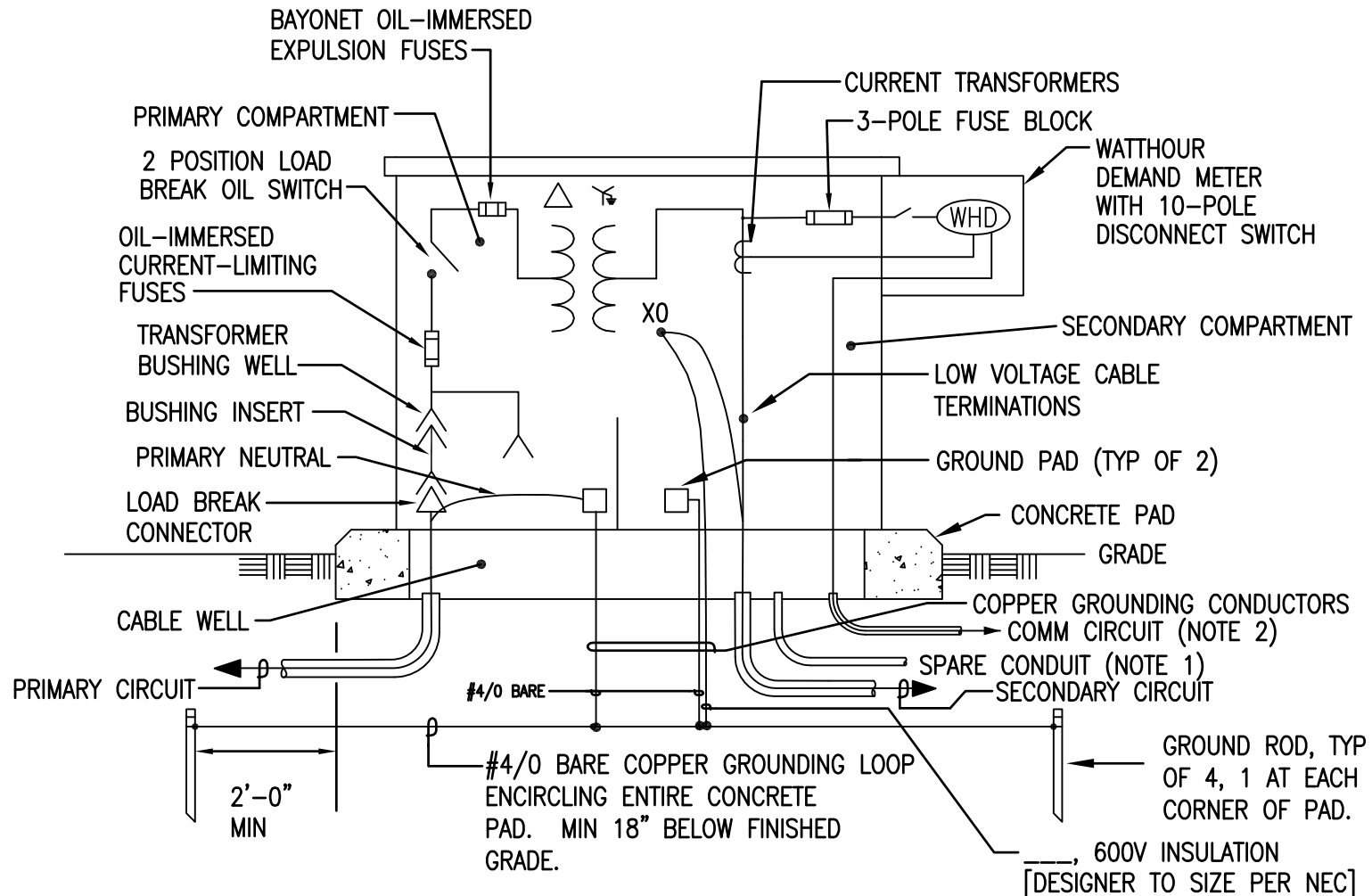
NOTE 1: PROVIDE ONE 1-INCH SPARE CONDUIT STUBBED-OUT FIVE FEET FROM PAD. COORDINATE WITH ACTIVITY FOR ADDITIONAL METERING INPUT (GAS, STEAM OR WATER SYSTEMS).

NOTE 2: PROVIDE THE COMM CIRCUIT TO THE MECHANICAL/ELECTRICAL EQUIPMENT ROOM. COORDINATE WITH ACTIVITY.

PAD-MOUNTED TRANSFORMER DETAIL

NOT TO SCALE

[MULTI-GROUNDED PRIMARY SYSTEM (DELTA-WYE) - WITH SURGE ARRESTERS]



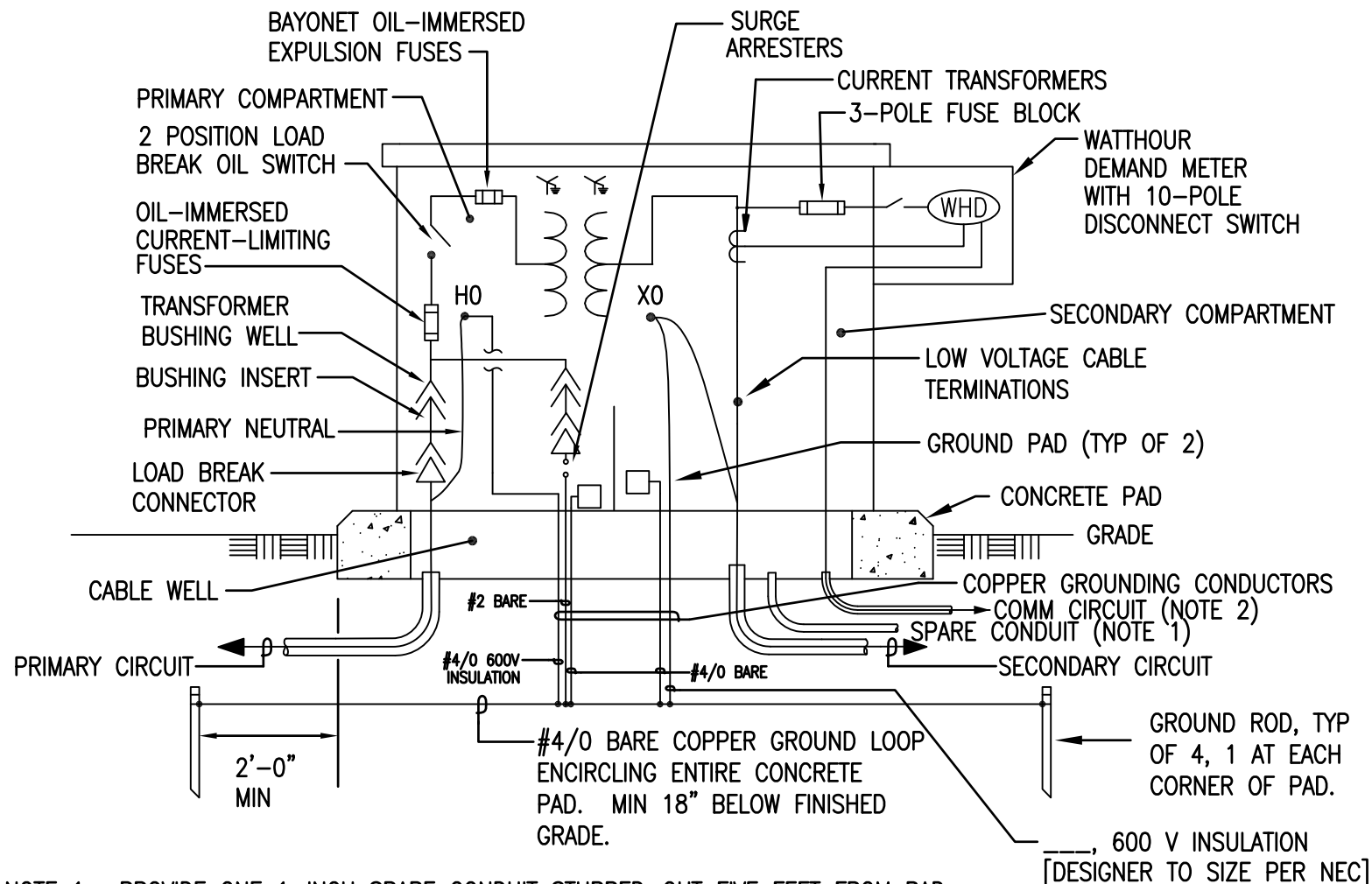
NOTE 1: PROVIDE ONE 1-INCH SPARE CONDUIT STUBBED-OUT FIVE FEET FROM PAD. COORDINATE WITH ACTIVITY FOR ADDITIONAL METERING INPUT (GAS, STEAM OR WATER SYSTEMS).

NOTE 2: PROVIDE THE COMM CIRCUIT TO THE MECHANICAL/ELECTRICAL EQUIPMENT ROOM. COORDINATE WITH ACTIVITY.

PAD-MOUNTED TRANSFORMER DETAIL

NOT TO SCALE

[MULTI-GROUNDED PRIMARY SYSTEM (DELTA-WYE) - WITHOUT SURGE ARRESTERS]



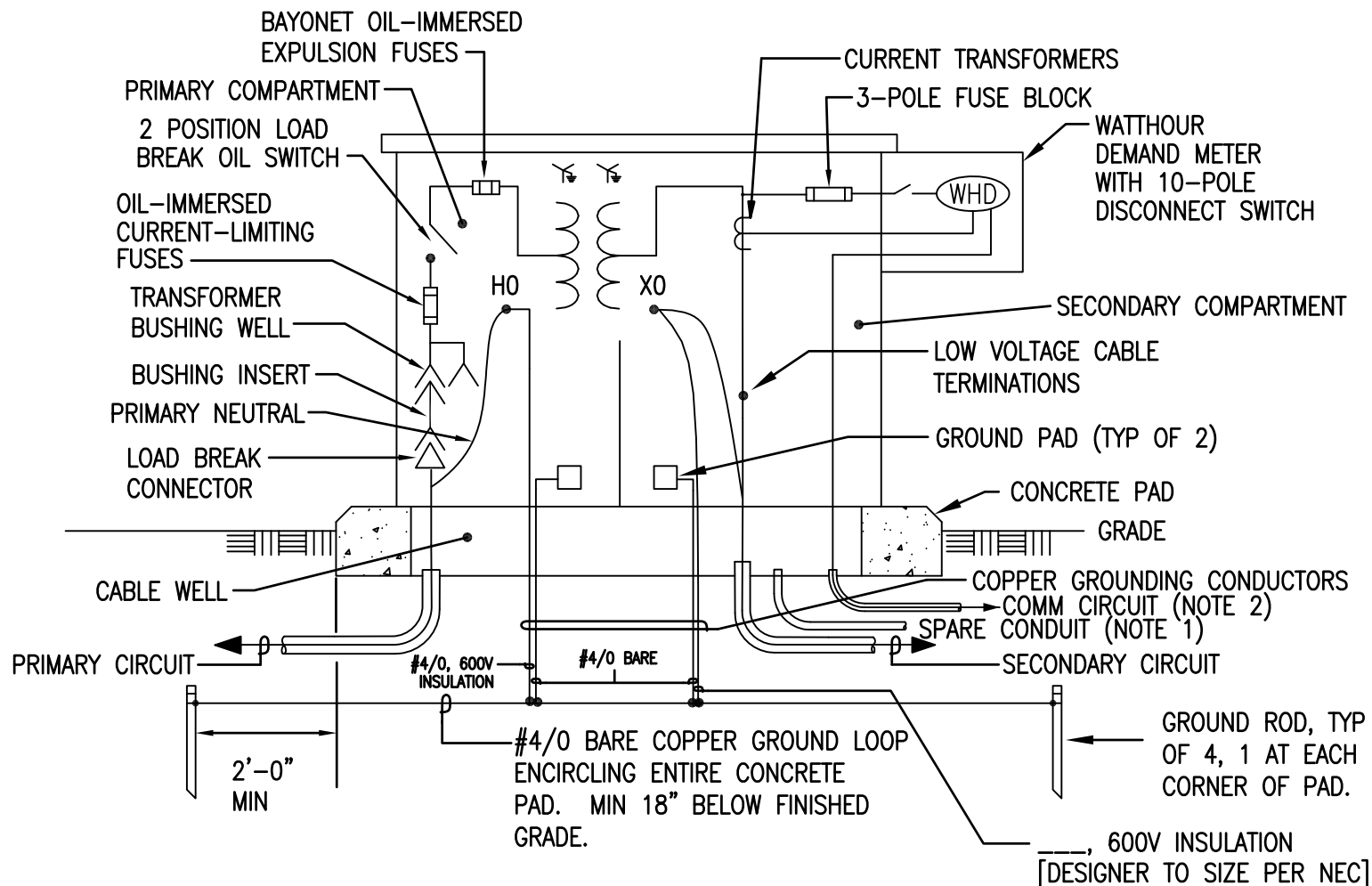
NOTE 1: PROVIDE ONE 1-INCH SPARE CONDUIT STUBBED-OUT FIVE FEET FROM PAD. COORDINATE WITH ACTIVITY FOR ADDITIONAL METERING INPUT (GAS, STEAM OR WATER SYSTEMS).

NOTE 2: PROVIDE THE COMM CIRCUIT TO THE MECHANICAL/ELECTRICAL EQUIPMENT ROOM. COORDINATE WITH ACTIVITY.

PAD-MOUNTED TRANSFORMER DETAIL

NOT TO SCALE

[MULTI-GROUNDED PRIMARY SYSTEM (WYE-WYE) - WITH SURGE ARRESTERS]



NOTE 1: PROVIDE ONE 1-INCH SPARE CONDUIT STUBBED-OUT FIVE FEET FROM PAD.
COORDINATE WITH ACTIVITY FOR ADDITIONAL METERING INPUT (GAS, STEAM OR WATER SYSTEMS).

NOTE 2: PROVIDE THE COMM CIRCUIT TO THE MECHANICAL/ELECTRICAL EQUIPMENT ROOM. COORDINATE WITH ACTIVITY.

PAD-MOUNTED TRANSFORMER DETAIL

NOT TO SCALE

[MULTI-GROUNDED PRIMARY SYSTEM (WYE-WYE) - WITHOUT SURGE ARRESTERS]