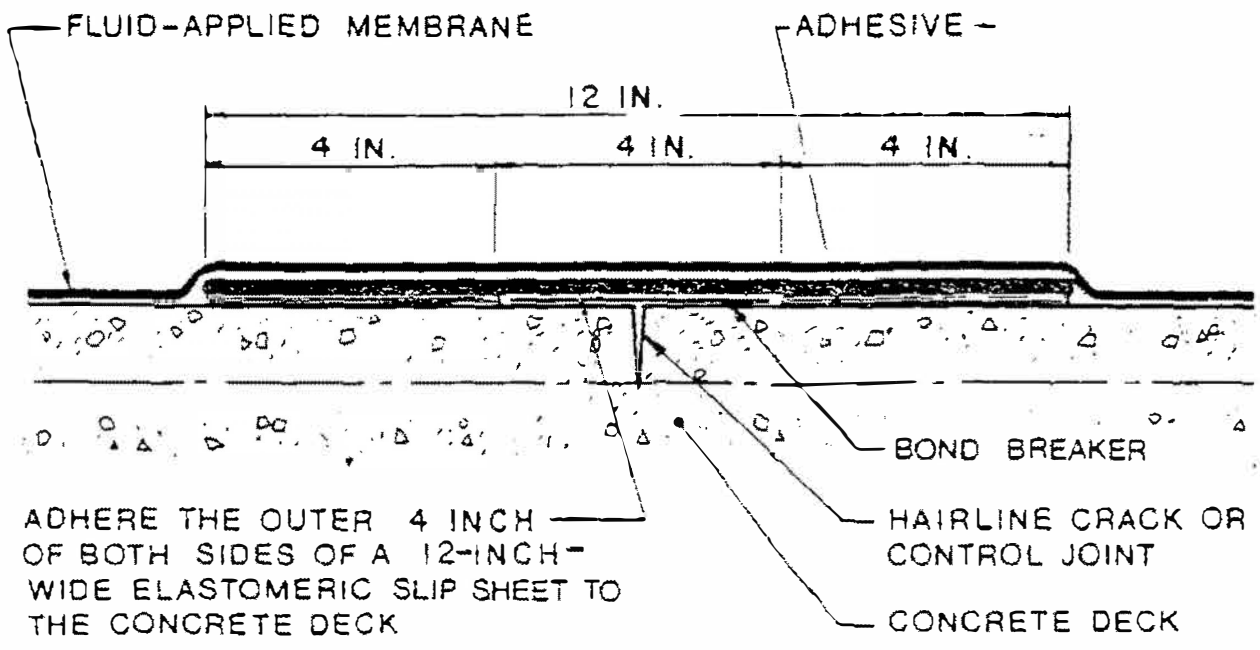


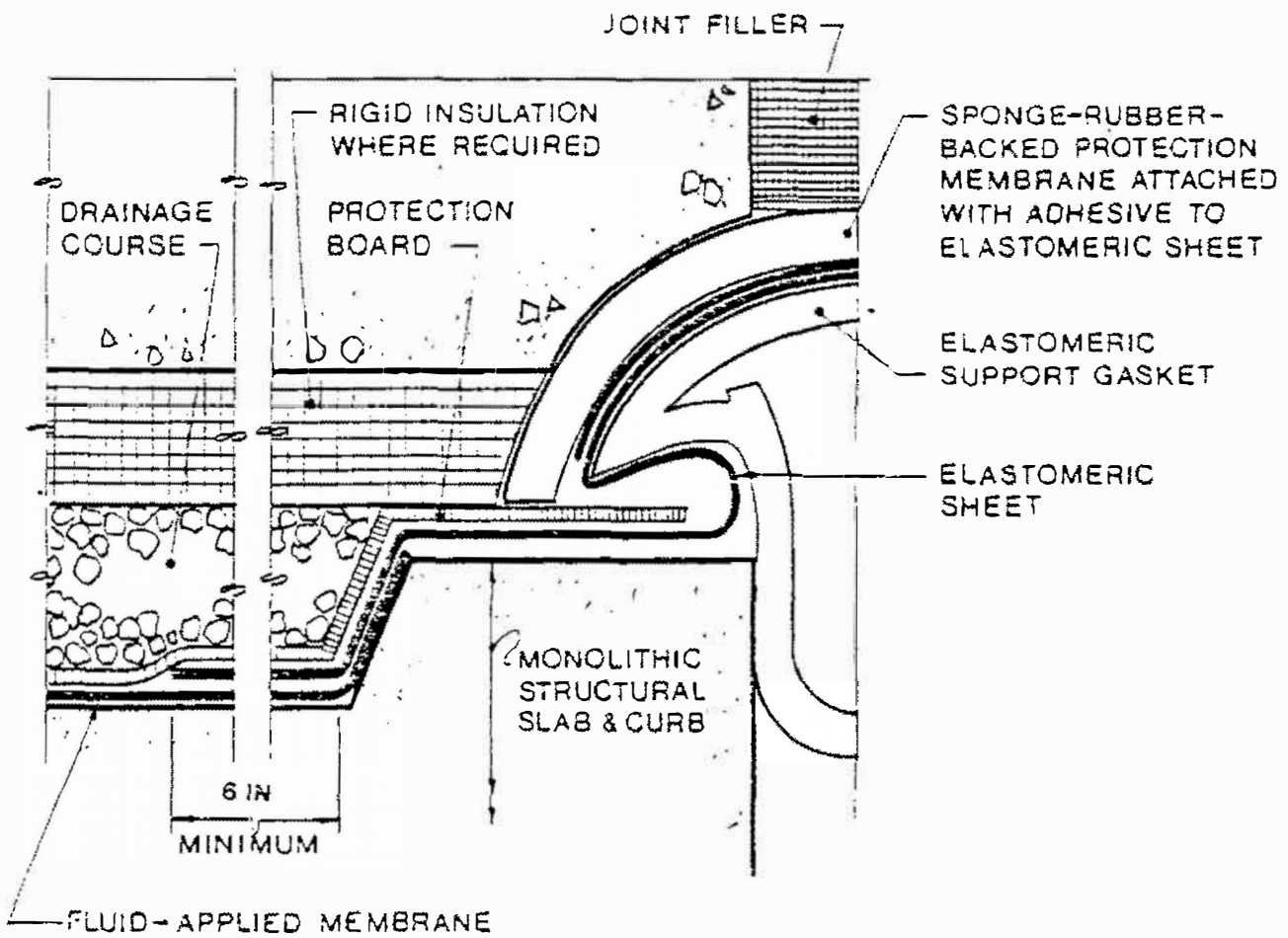
BASIC COMPONENTS OF COLD LIQUID-APPLIED  
ELASTOMERIC MEMBRANE WATERPROOFING  
SYSTEM WITH SEPARATE WEARING COURSE

SKETCH 1



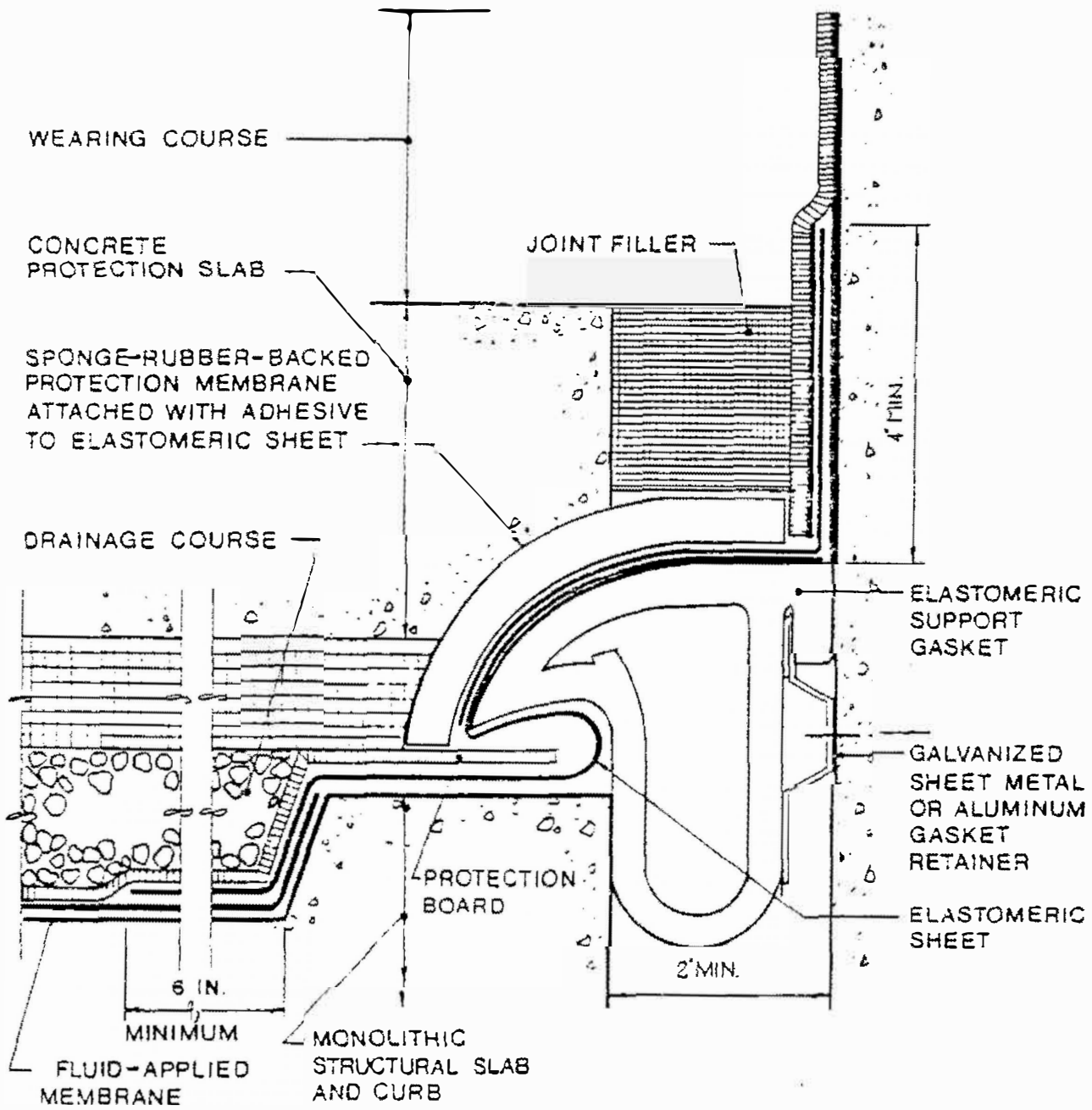
**FLASHING AT CRACKS AND NONMOVING JOINTS IN THE CONCRETE**

SKETCH 2



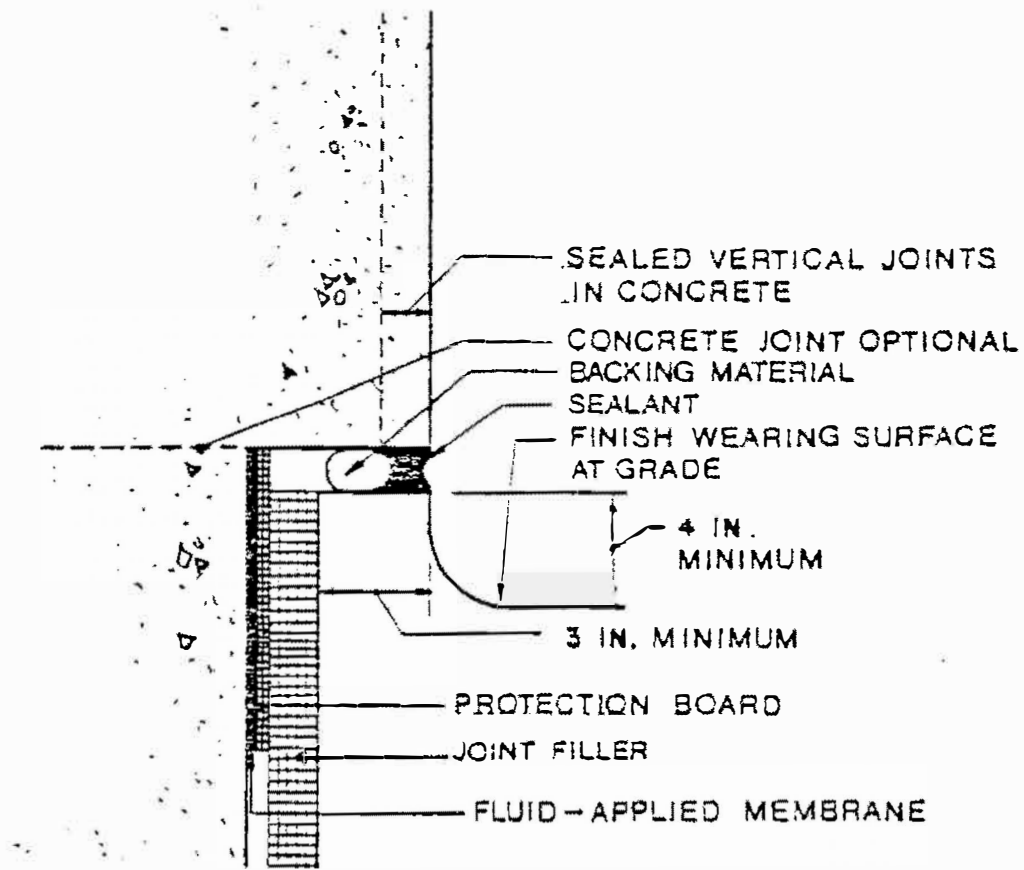
EXPANSION JOINT FLASHING

SKETCH 3



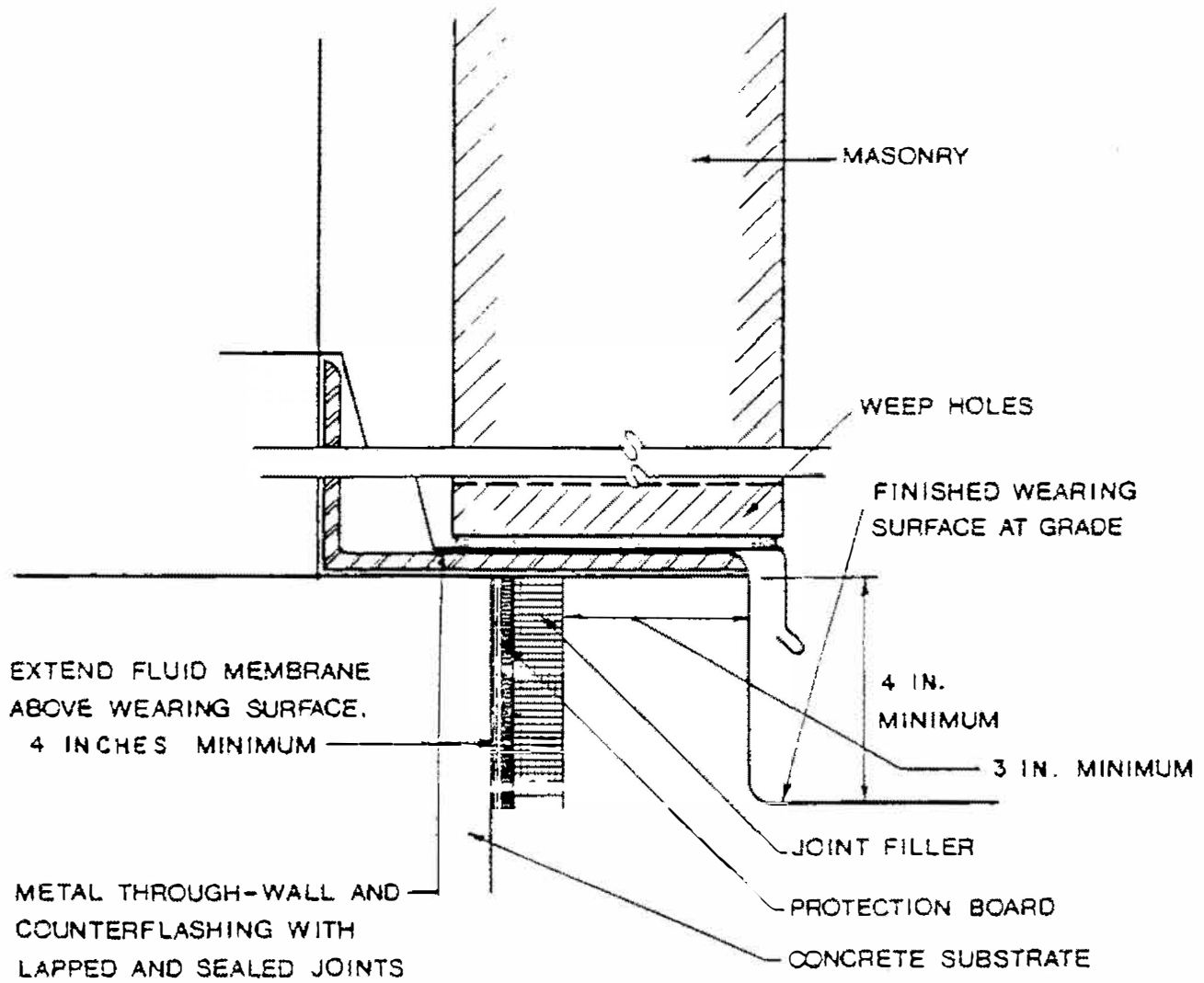
EXPANSION JOINT FLASHING AT WALL

SKETCH 4



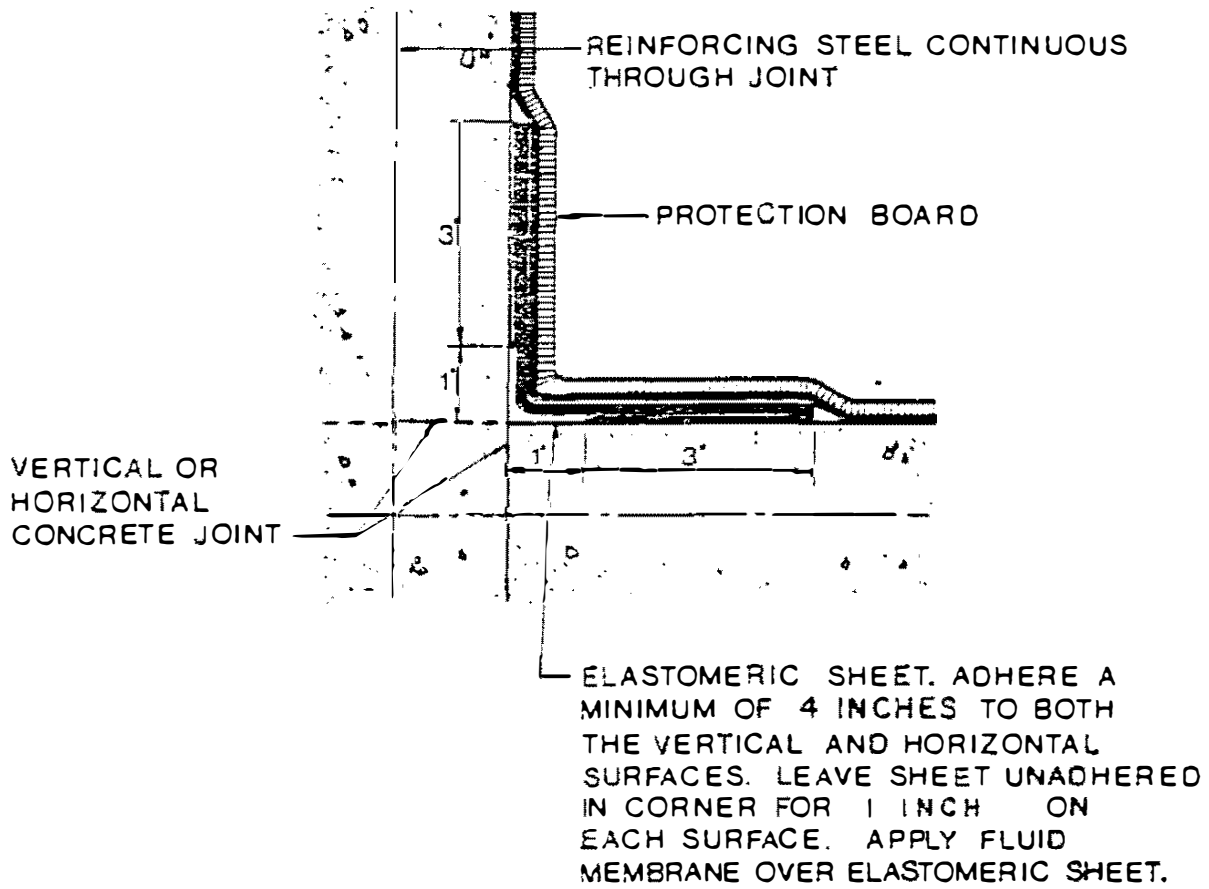
WALL FLASHING ON CONCRETE WALL

SKETCH 5



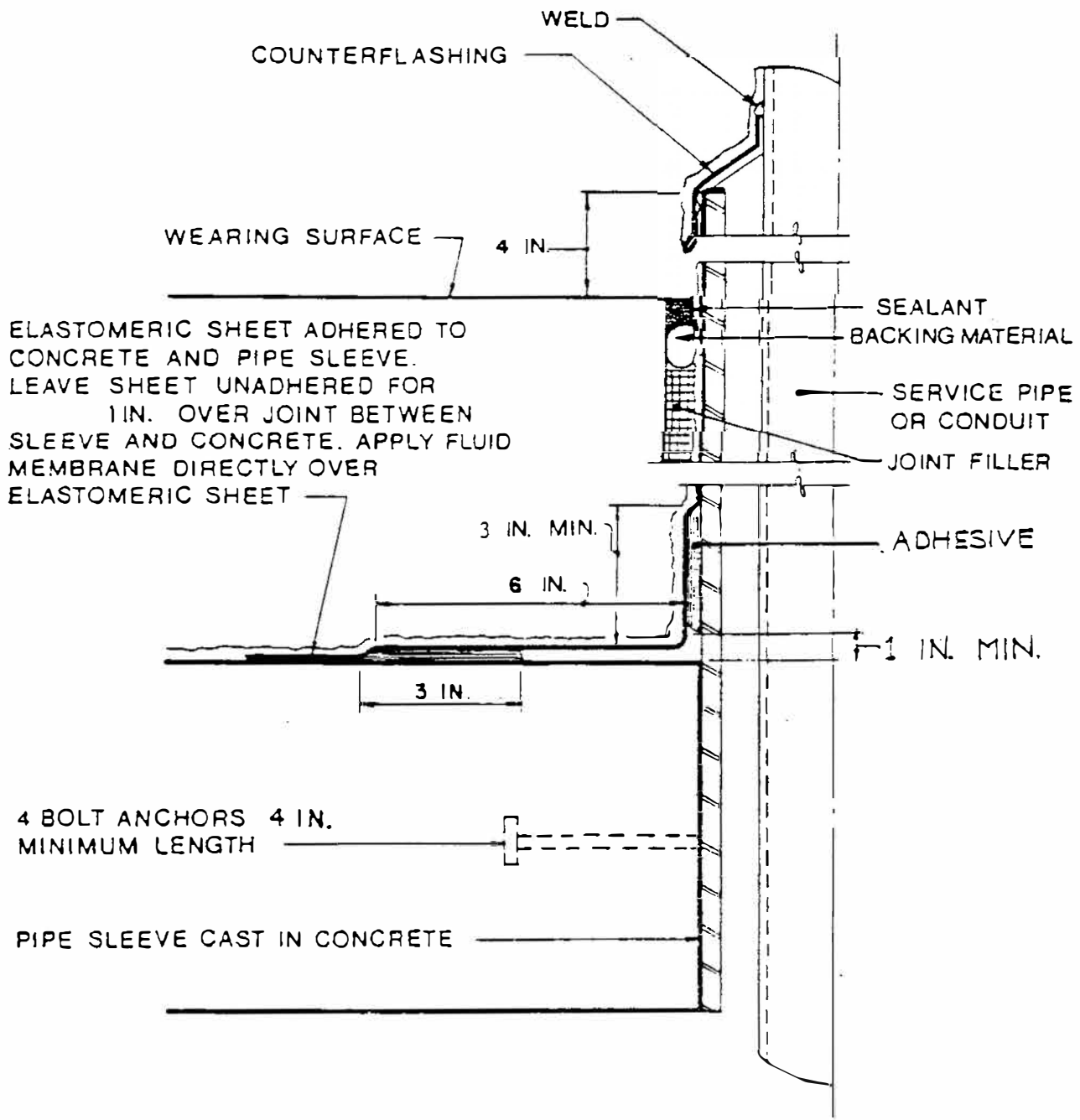
TERMINAL CONDITION WITH MASONRY ABOVE  
FINISH WEARING SURFACE AT GRADE

SKETCH 6



WALL - DECK FLASHING

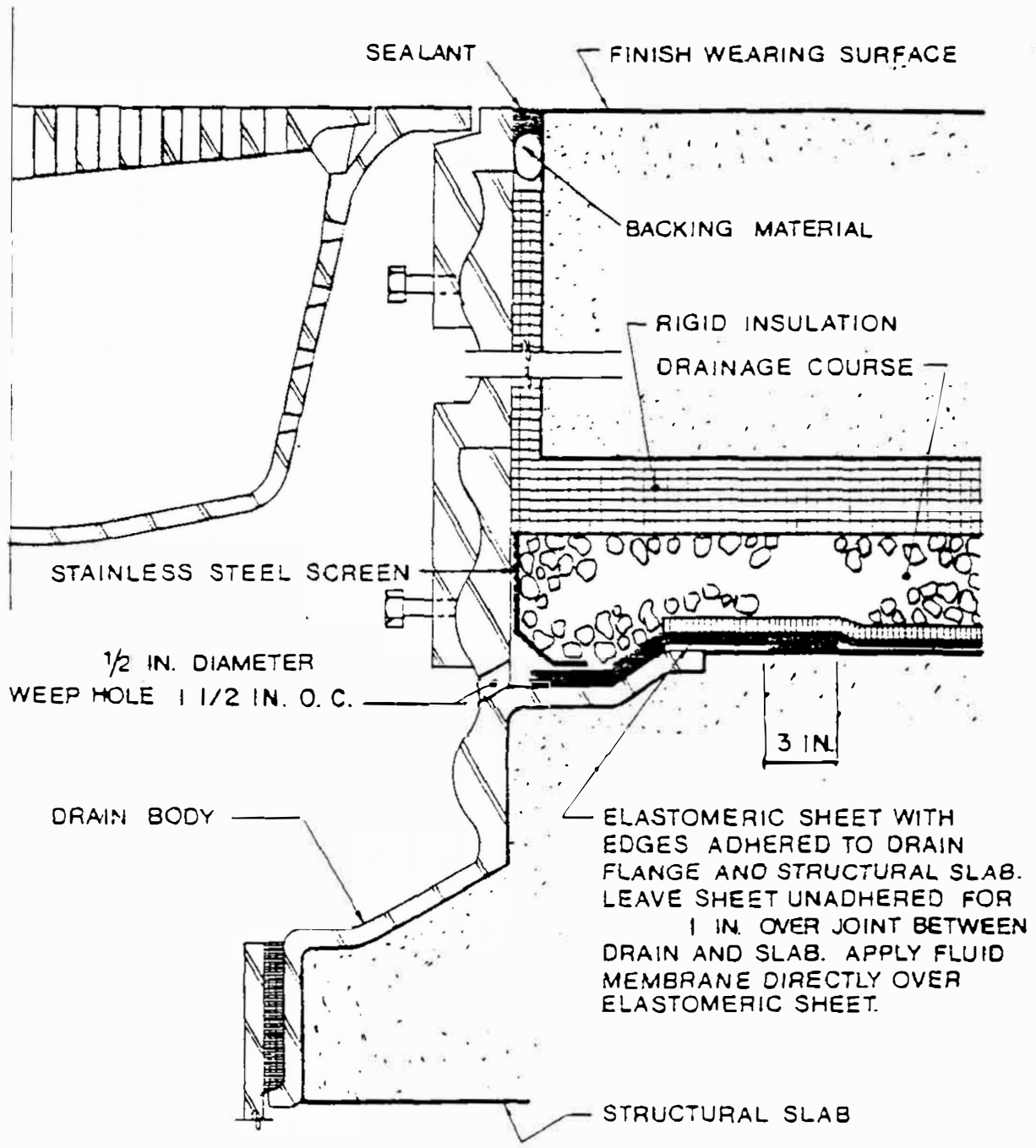
SKETCH 7



PENETRATION FLASHING

SKETCH 8





**DRAIN FLASHING**

SKETCH 9