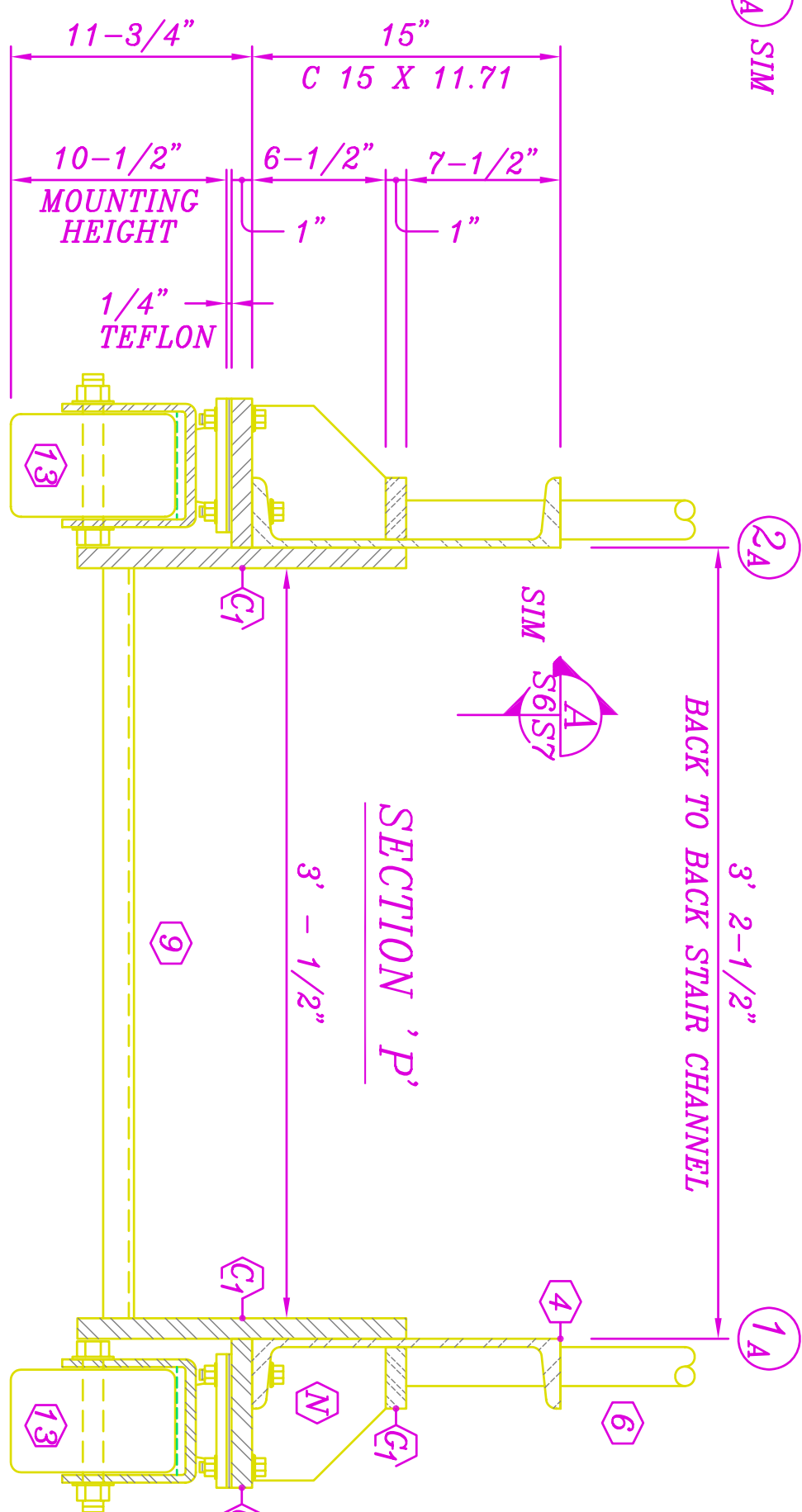
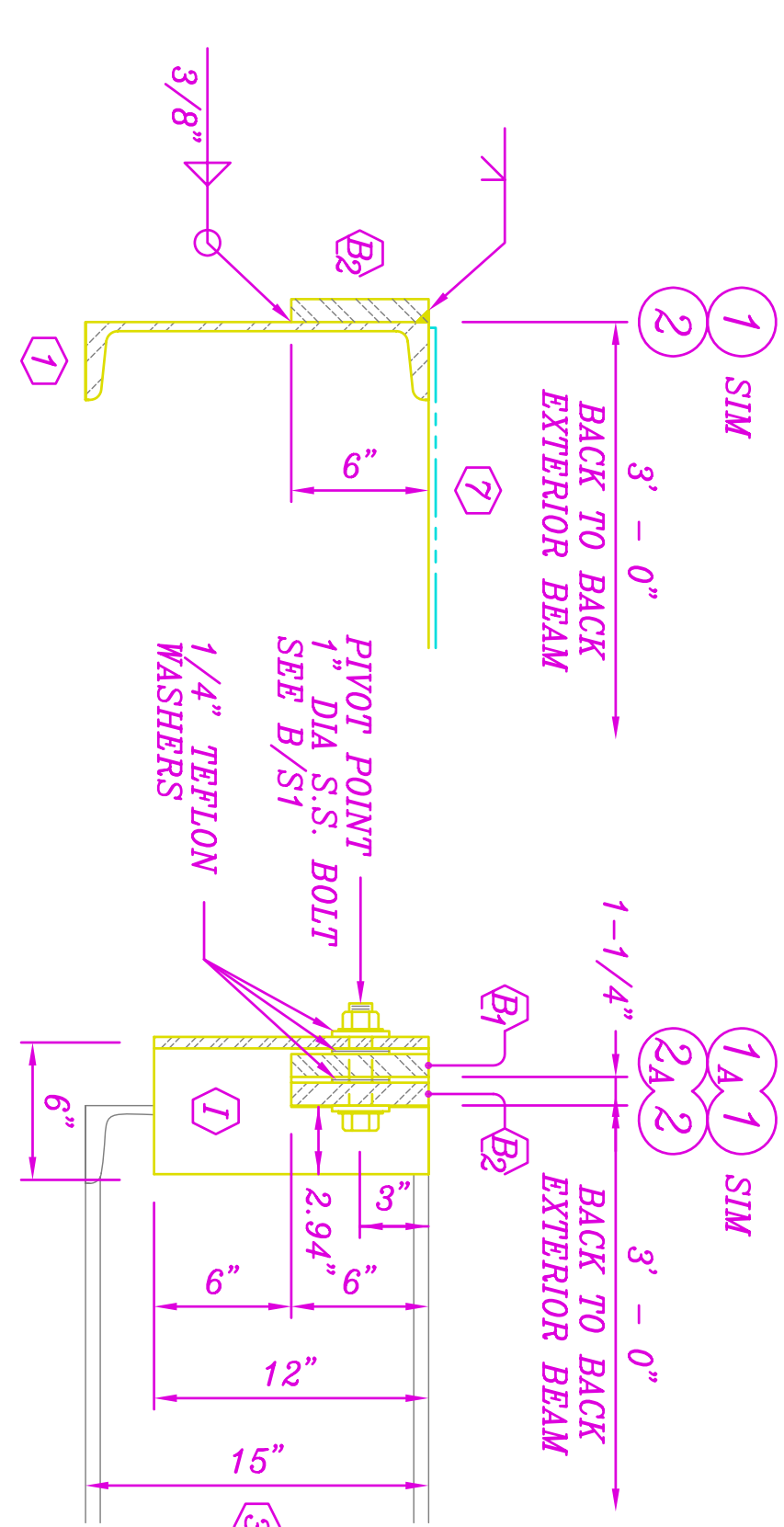
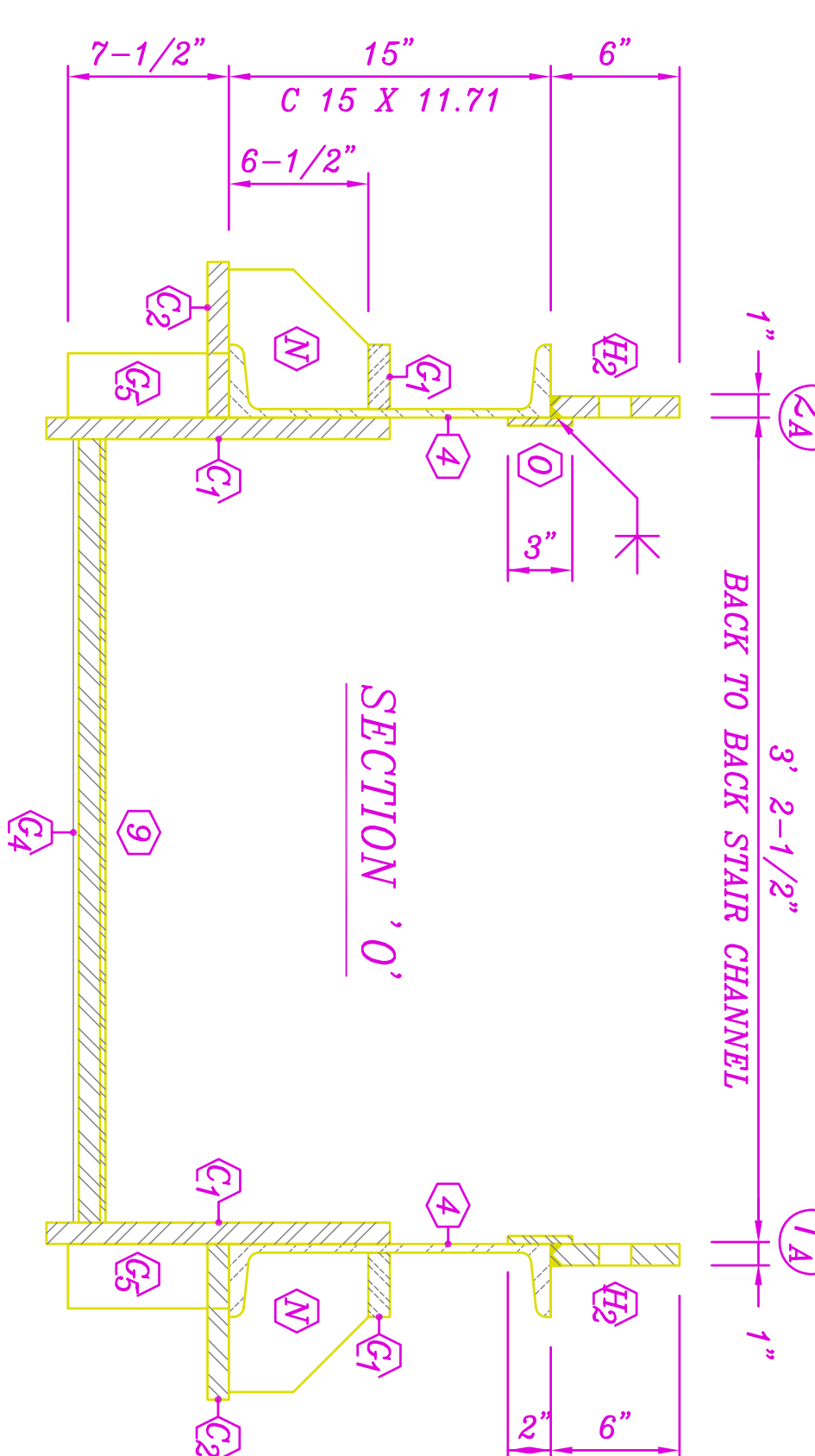
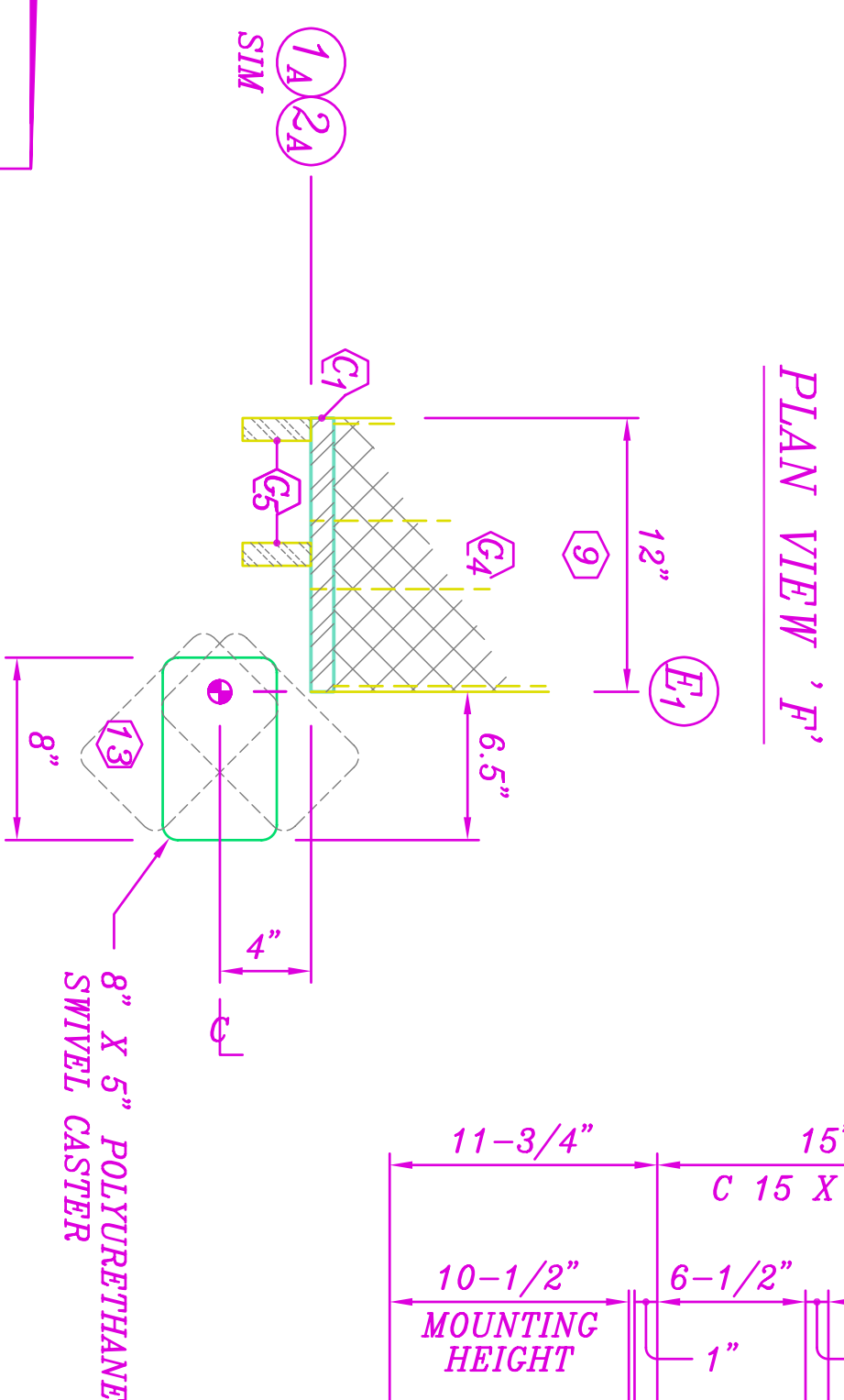
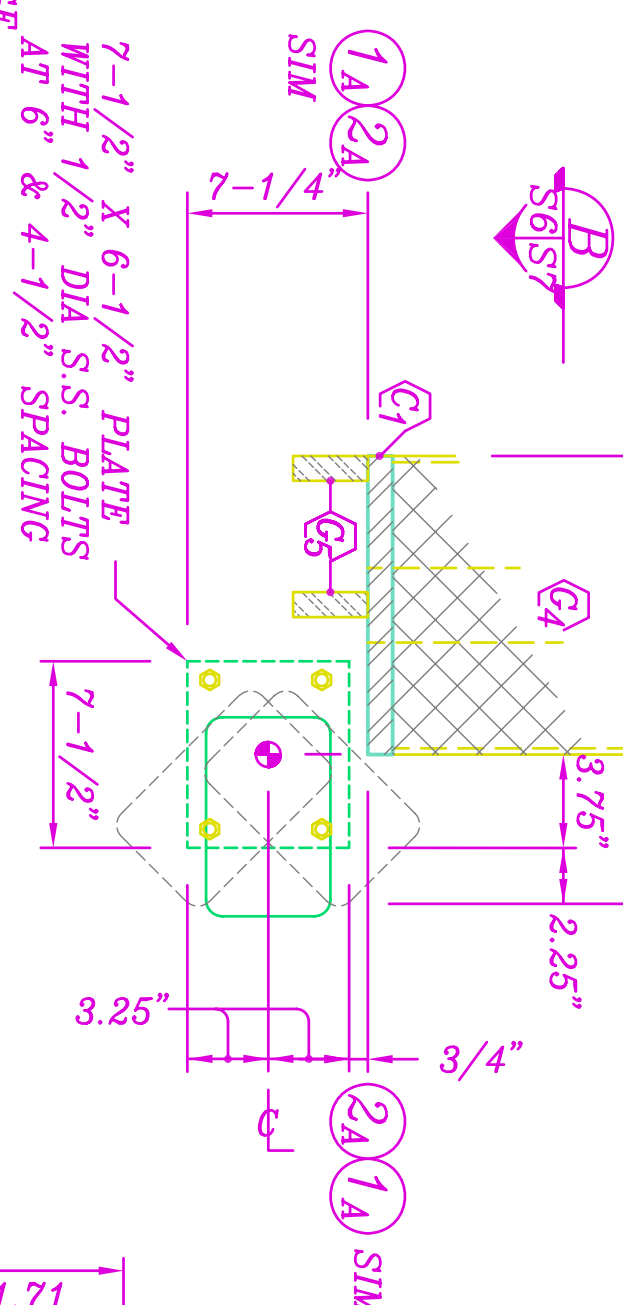
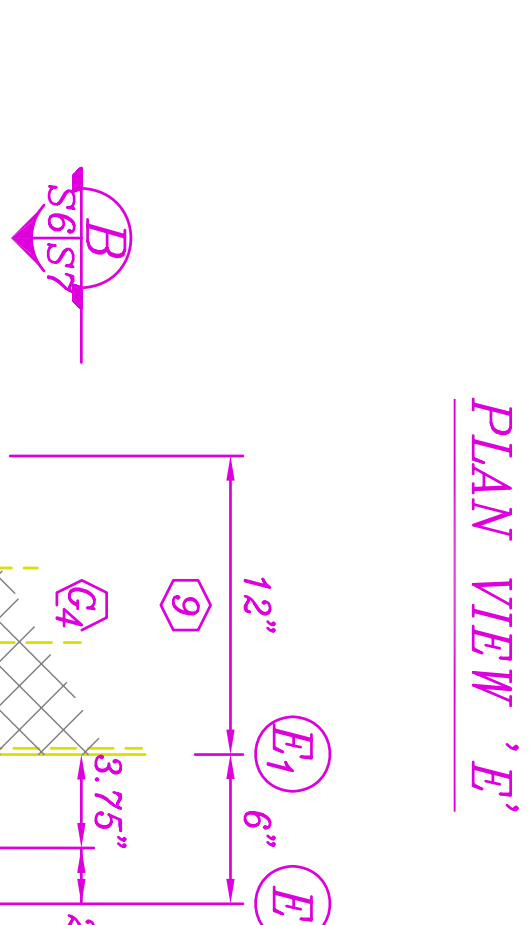
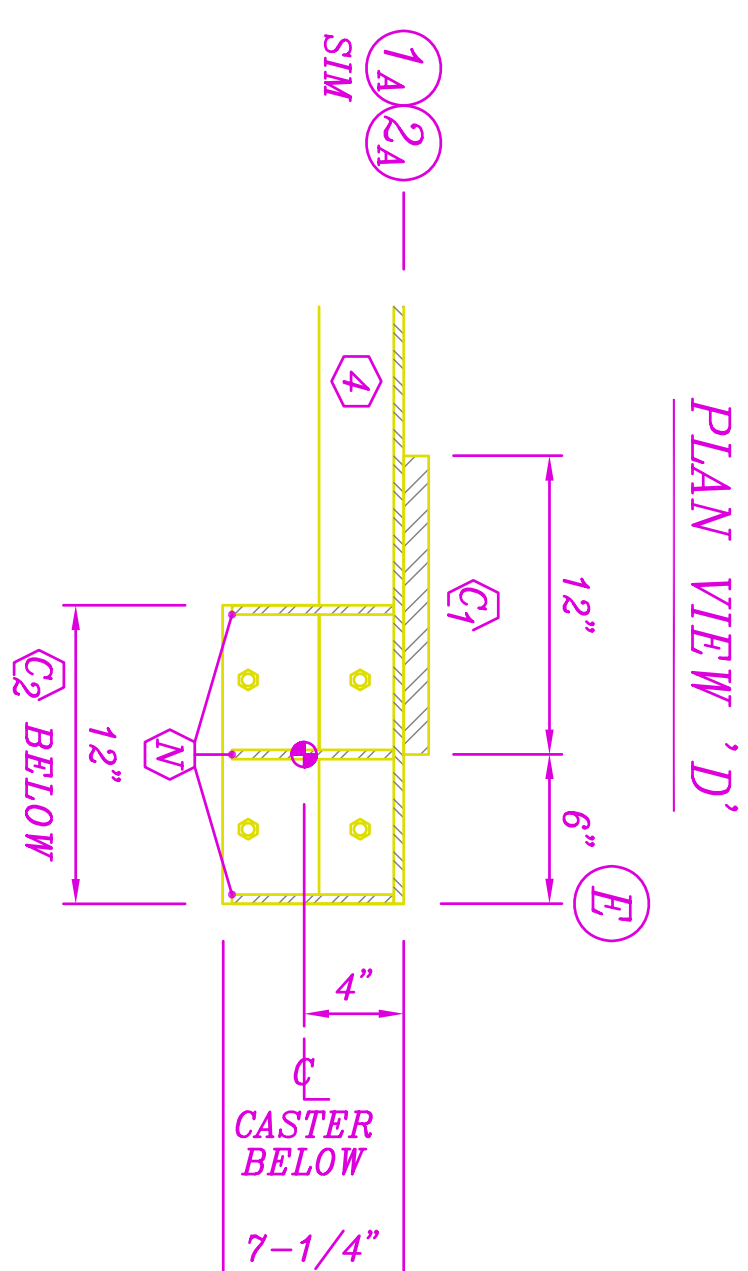
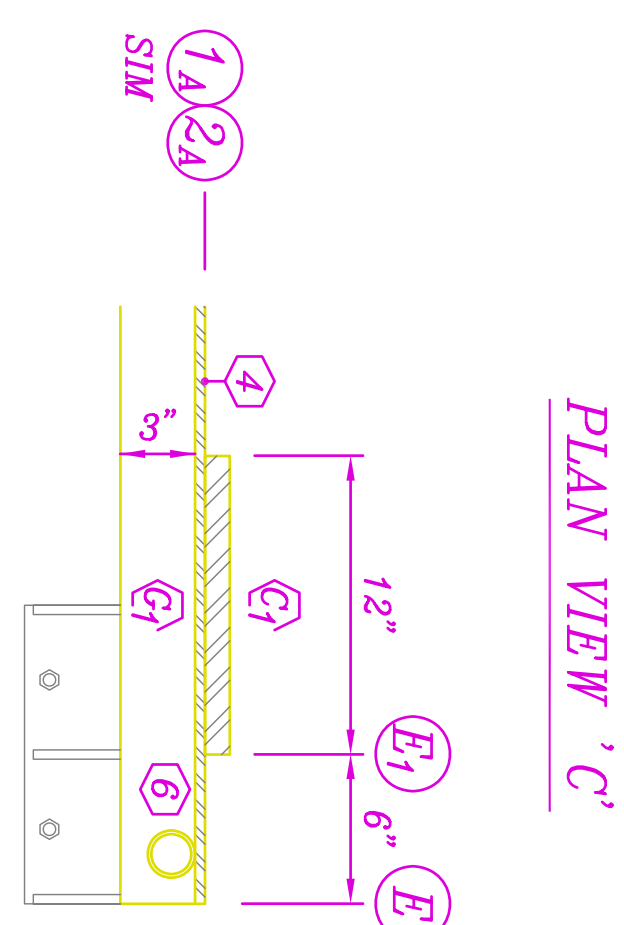
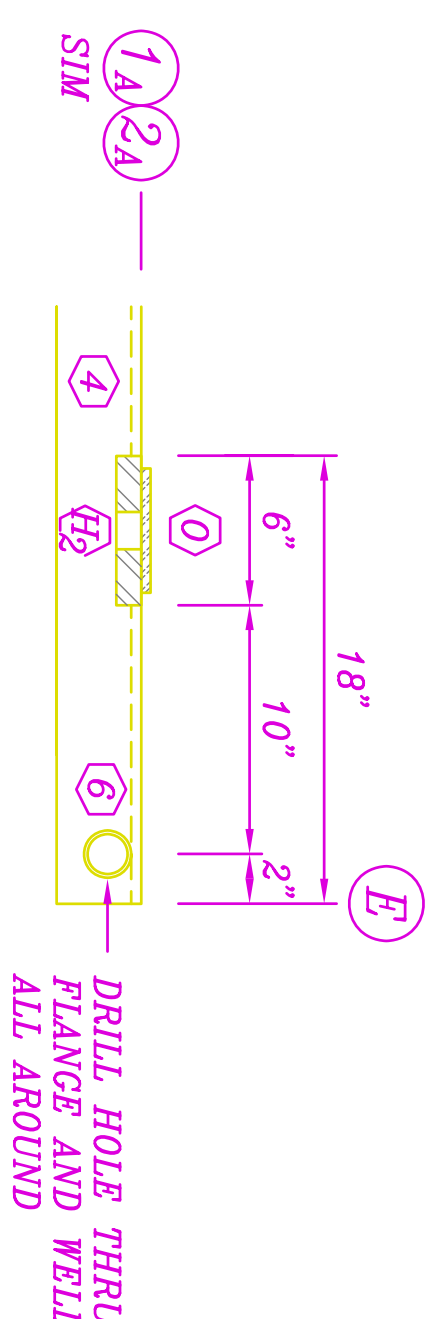
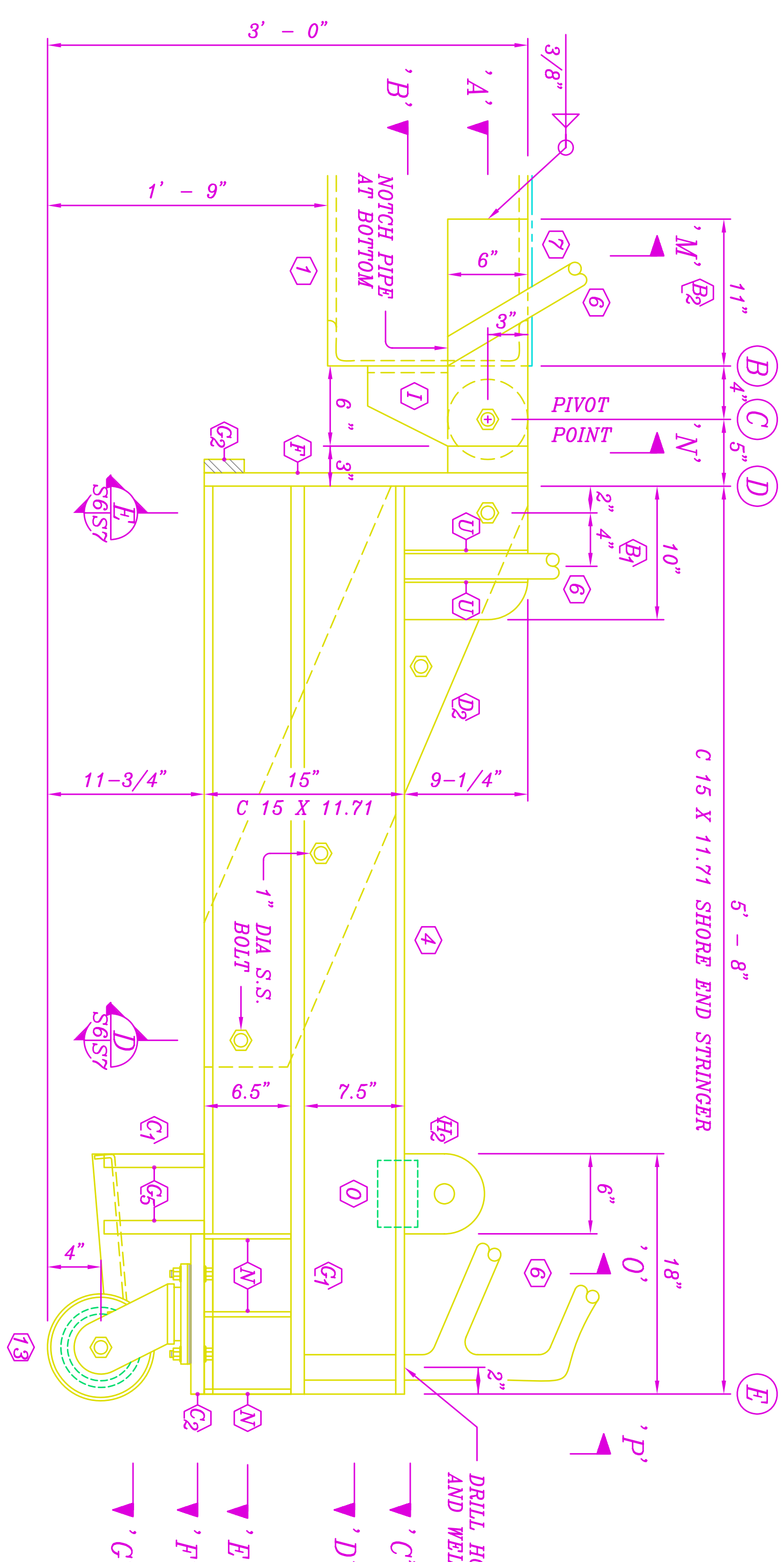
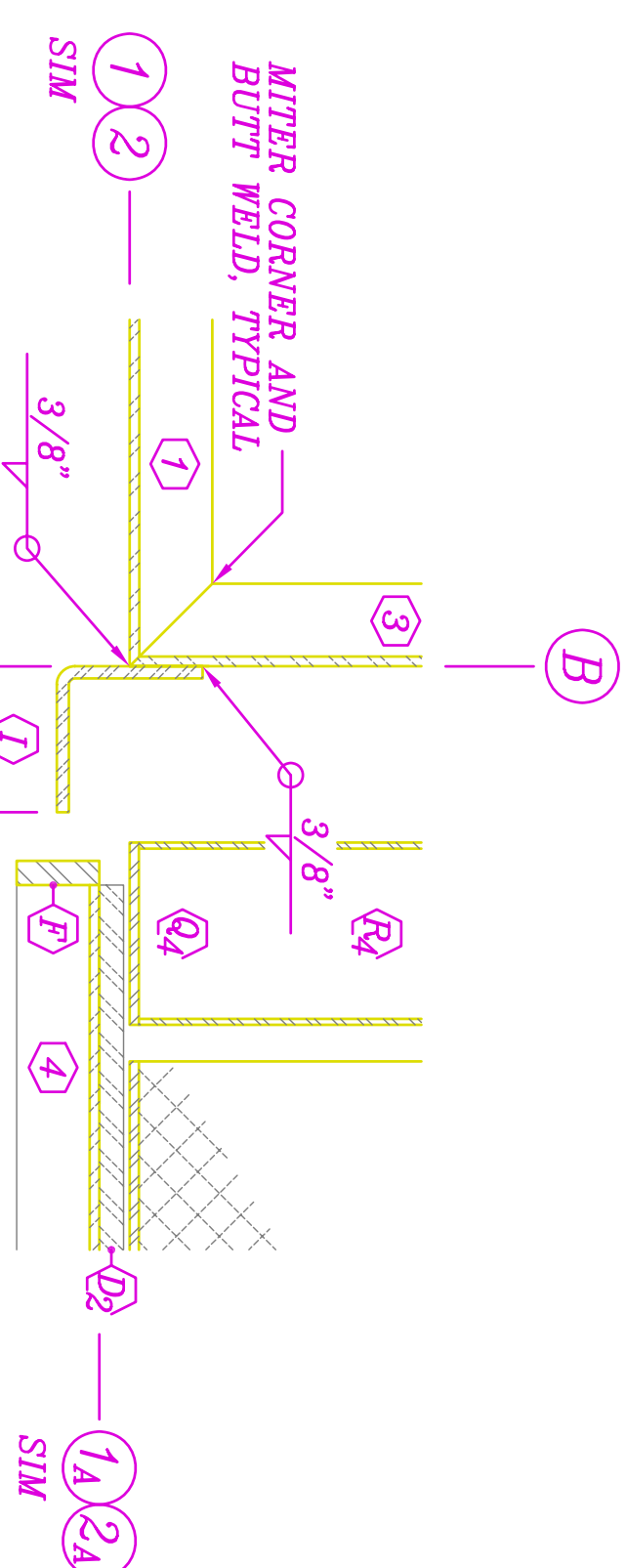


- LEGEND: ALUMINUM UNLESS NOTED BY *

- MAJOR REVISION FROM PREVIOUS DRAWINGS**
- 1 C 15 X 11.71 X 40'-0" EXTERIOR BEAM
- 3 C 15 X 11.71 X 3'-0" END BEAM
- 4 C 15 X 11.71 X 5'-8" SHORE END STRINGER
- 6 1'-1/2" DIA PIPE POST / HANDRAIL, SEE B/S2
- 7 2' 11-1/2" X 1/4" CHECKERED FLOOR PLATE
- 9 1/4" CHECKERED SHORE END FIXED TREAD, SEE B/S7
- 10 12" X 1/4" CHECKERED ROTATING TREAD, SEE F/S2
- 11 1/4" BENT CHECKERED ROTATING TREAD, SEE F/S2
- 13 8" DIA X 5" SHORE END SWIVEL CASTER, SEE A/S2
- 15 18" X 1" X 9-1/4" PLATE, SEE C/S7
- 16 18" X 1" X 6" PLATE, SEE C/S7
- 17 12" X 1" X 16" SHORE END TREAD PLATE, SEE C/S7
- 18 12" X 1" X 7-1/4" CASTER PLATE, SEE A/S2
- 19 10" X 1" STRINGER TREAD PLATE, SEE C/S7
- 20 3-3/8" X 1" X 24-1/4" STRINGER WEB STIFFENER, SEE C/S7
- 21 3" X 1" X 5-8" STRINGER WEB HORIZ STIFFENER, SEE A/S6
- 22 3" X 1" X 3'-8" STRINGER BRACE, SEE A/S6
- 23 3" X 1" X 3'-1/2" SHORE END TREAD STIFFENER, SEE B/S7
- 24 3" X 1" X 7-1/2" SHORE END TREAD STIFFENER, SEE A/S6
- 25 6" X 1" PADEYE WITH 1-1/2" DIA HOLE, SEE E/S2
- 26 12" X 1/2" X 12" BENT PLATE, SEE C/S7
- 27 6'-1/2" X 3/8" X 6'-1/2" CASTER STIFFENER PLATE, SEE C/S7
- 28 5" X 3/8" X 3" PADEYE BACKING PLATE, SEE A/S7
- 29 3/8" ROTATING TREAD END PLATE, SEE F/S2
- 30 1/4" ROTATING BENT TREAD PLATE, SEE F/S2
- 31 1-3/4" X 1/4" X 9-1/4" POST STIFFENER PLATE, SEE B/S2



STRUCTURAL	SITE 6 OF 8	MAKING THE HIGHEST MOUNTAIN
DIG	R. CHONG	PUBLIC WORKS CENTER
DIG	R. CHONG	FROM MOUNTAIN TOWN
CHC	SUDHIO	
DPAR	OLOWSKI	
INIT DIR MOR		
DIV DIR		
	SUBASE	PEARL HARBOR, HI
	SIRRA WHARVS	
		40' X 3' BEAM BROW

S6	APPROVED FOR ENDORSEMENT TO PWC CODE 449 MEMO OF	11/15/02	APPROVED	DATE	BY OR DIRECTION OF COMMANDING OFFICER	SCALE: AS NOTED	SIZE	CODE	IDENT NO	NAVPAC DRAWING NO. 7498192	CONSTR CODE NO.	PWC SHOP	SPEC	PWC SHOP	SHEET 6 OF 8
	SUBSISTENCE AS TO FUNCTION	11/15/02													
	TITLE	CNRH N464													
	DATE	11/15/02													

STAIR STRINGER

A CONNECTION DETAIL

$\frac{41}{5756}$ $1 - 1/2 = 1' - 0''$
 53.55 —

