

Room Description: Scanning Room, Nuclear Medicine (NMGS1)

NSF: 380

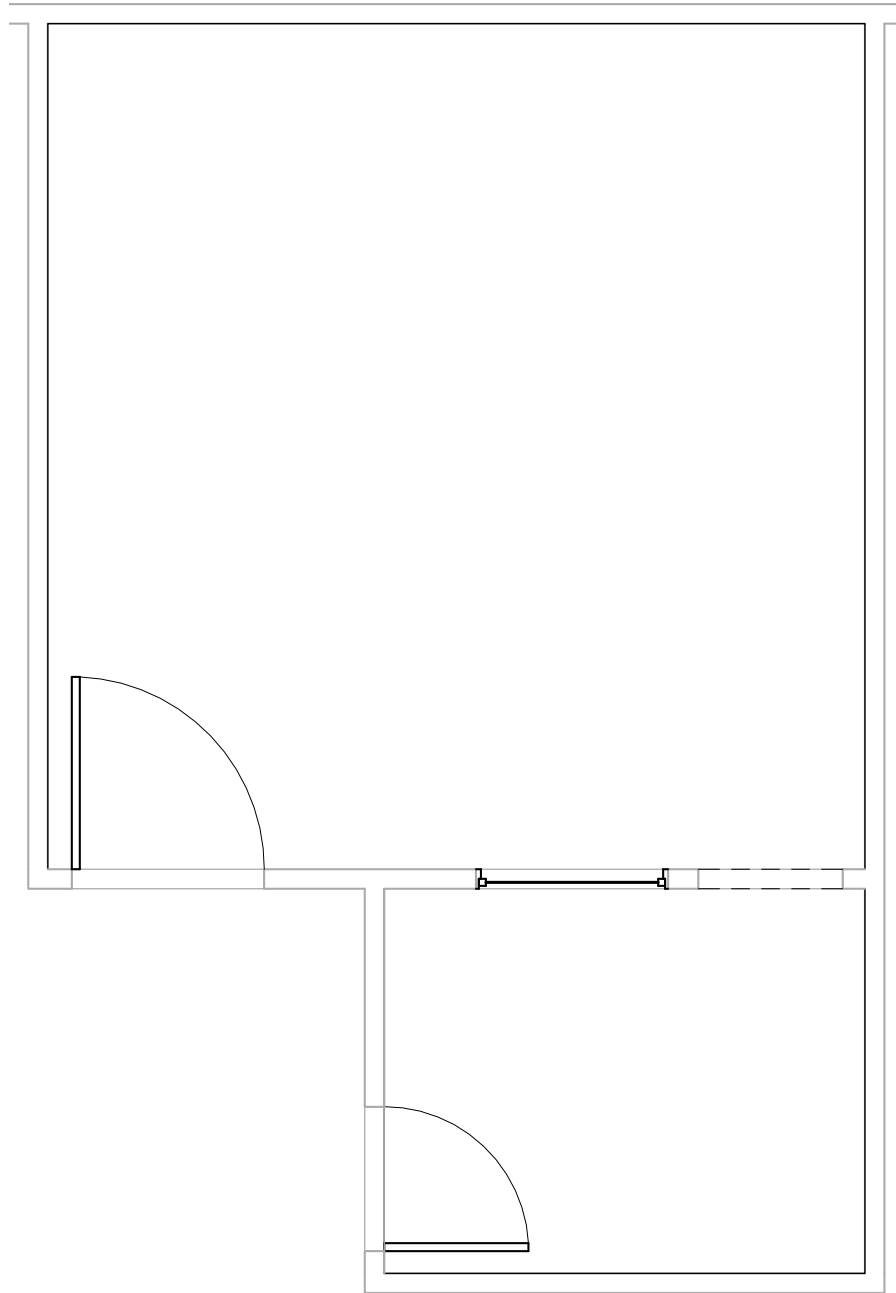
NMGS1

Sheet Description: Room/Equipment Isometric

Scale:

Sheet
1

of
6

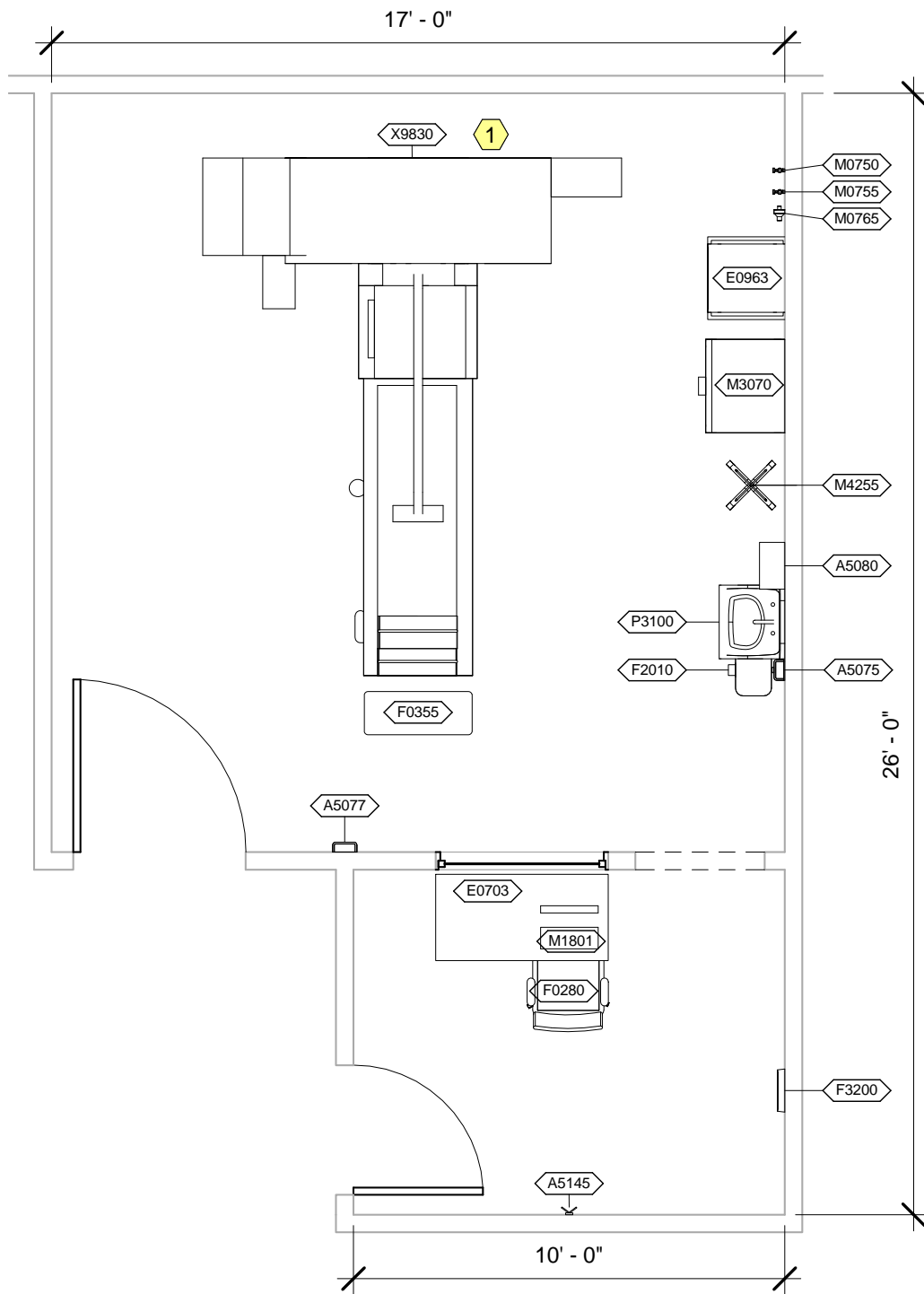


NMGS1 - CEILING MOUNTED EQUIPMENT PLAN

NOTE:

1. Provide full range dimming capability of all fixtures in this room.

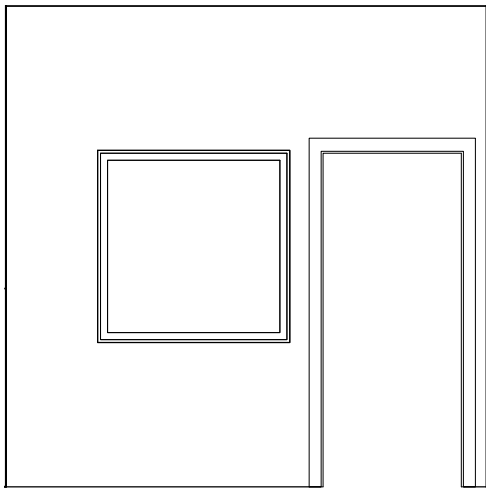
Room Description: Scanning Room, Nuclear Medicine (NMGS1)	NSF: 380	NMGS1	
Sheet Description: Ceiling Mounted Equipment Plan	Scale: 1/4" = 1'-0"	Sheet 2	of 6



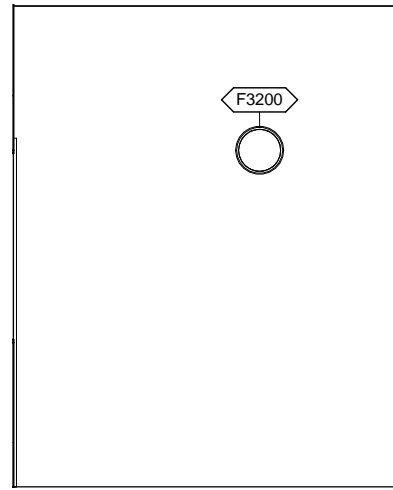
NMGS1 - NOTES

- 1 Utilizing the manufacturers site planning guide for JSN X9830, coordinate location of disconnect switch with manufacture selected.

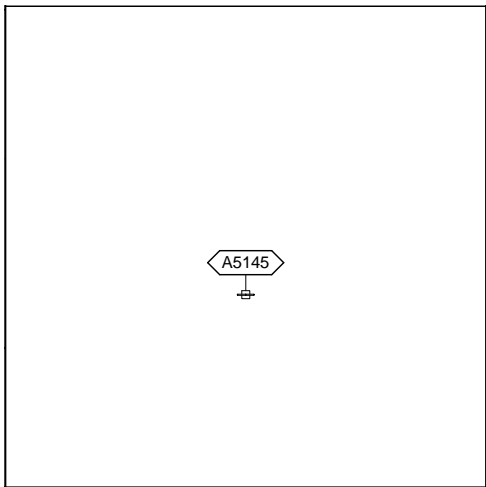
Room Description: Scanning Room, Nuclear Medicine (NMGS1)	NSF: 380	NMGS1	
Sheet Description: Equipment Plan	Scale: 1/4" = 1'-0"	Sheet 3	of 6



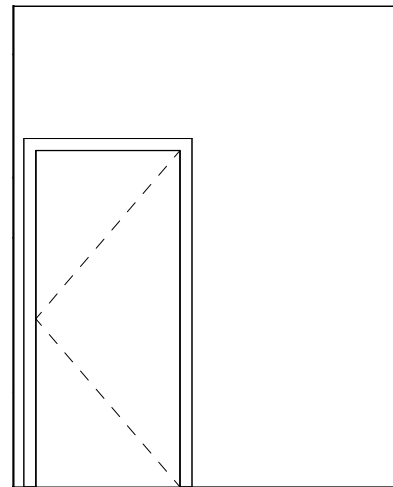
NMGS1 (CONTROL ROOM) - NORTH ELEVATION



NMGS1 (CONTROL ROOM) - EAST ELEVATION

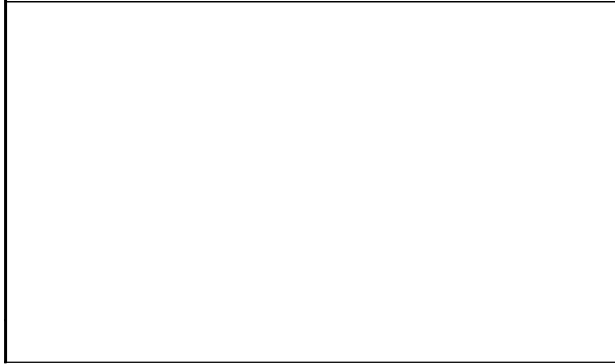


NMGS1 (CONTROL ROOM) - SOUTH ELEVATION

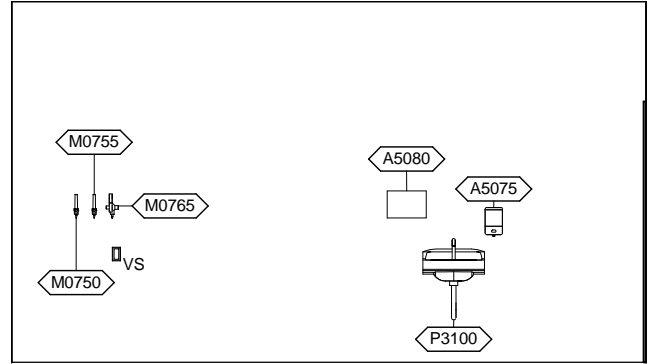


NMGS1 (CONTROL ROOM) - WEST ELEVATION

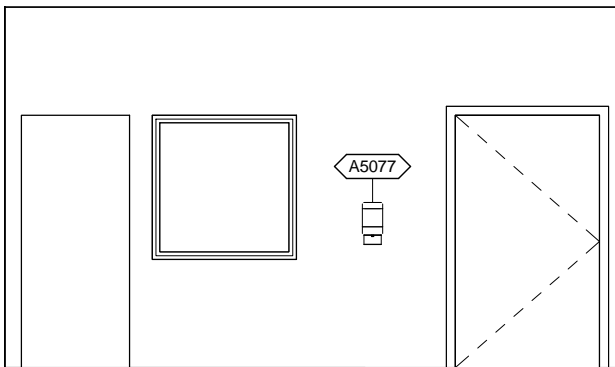
Room Description: Scanning Room, Nuclear Medicine (NMGS1)	NSF: 380	NMGS1	
Sheet Description: Interior Room Elevations	Scale: 1/4" = 1'-0"	Sheet 4	of 6



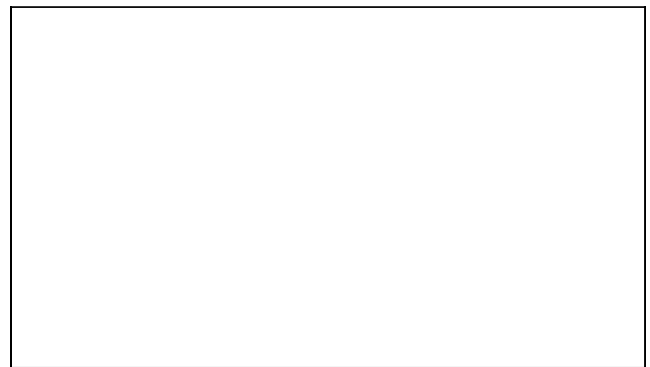
NMGS1 - NORTH ELEVATION



NMGS1 - EAST ELEVATION



NMGS1 - SOUTH ELEVATION



NMGS1 - WEST ELEVATION

Room Description: Scanning Room, Nuclear Medicine (NMGS1)	NSF: 380	<h1>NMGS1</h1>	
Sheet Description: Interior Room Elevations	Scale: 3/16" = 1'-0"	Sheet <h2>5</h2>	of <h2>6</h2>

NMGS1 - EQUIPMENT SCHEDULE

JSN	Nomenclature	Qty	LF	AR	Logistics			Utilities						
					NA	AF	VA	1	2	3	4	5	6	
A5075	Dispenser, Soap, Disposable	1		C	C	C	C	-	-	-	-	-	-	-
A5077	Dispenser, Hand Sanitizer, Hands free	1		C	C	C	C	-	-	-	-	-	-	-
A5080	Dispenser, Paper Towel, SS, Surface Mounted	1		A	A	A	A	-	-	-	-	-	-	-
A5145	Hook, Garment, Double, SS, Surface Mounted	1		A	A	A	A	-	-	-	-	-	-	-
E0703	Table, Process, Adj Height, 5 Drawer, 48"W x 24"D	1		C	C	C	C	-	-	-	-	-	-	-
E0963	Cart, General Storage, Mobile	1		C	C	C	C	-	-	-	-	-	-	-
F0280	Chair, Swivel, Low Back	1		C	C	C	C	-	-	-	-	-	-	-
F0355	Footstool, Straight	1		C	C	C	C	-	-	-	-	-	-	-
F2010	Basket, Wastepaper, Step-On	1		C	C	C	C	-	-	-	-	-	-	-
F3200	Clock, Battery, 12" Diameter	1		C	C	C	C	-	-	-	-	-	-	-
M0750	Flowmeter, Air, Connect w/50 PSI Supply	1		C	C	C	C	-	-	K	-	-	-	-
M0755	Flowmeter, Oxygen, Low Flow	1		C	C	C	C	-	-	A	-	-	-	-
M0765	Regulator, Vacuum	1		C	C	C	C	-	-	B	-	-	-	-
M1801	Computer, Microprocessing, w/Flat Panel Monitor	1		C	C	C	C	-	A	-	-	-	-	-
M3070	Hamper, Linen, Mobile, w/Lid	1		C	C	C	C	-	-	-	-	-	-	-
M4255	Stand, IV, Adjustable	1		C	C	C	C	-	-	-	-	-	-	-
P3100	Lavatory, Vitreous China, Slab Type	1		A	A	A	A	D	-	-	-	-	-	-
X9830	Scanner, Nuclear, SPECT, Dual Head	1		C	C	C	C	-	F	-	-	-	-	-

Room Description: Scanning Room, Nuclear Medicine (NMGS1)	NSF: 380	NMGS1	
Sheet Description: Data & Equipment Schedule	Scale:	Sheet 6	of 6