

KEY NOTES

1. PROVIDE A1165, IV TRACKS, FOR NAVY PROJECTS ONLY.
2. UTILITIES AND DEVICES INDICATED ARE FOR A CLINIC OR HOSPITAL WITH AN ALTERNATE POWER SOURCE. WHERE NO ALTERNATE POWER SOURCE IS AVAILABLE PROVIDE BATTERY BACKUP BALLAST.

TREATMENT ROOM, PROTOSCOPIC
EXAM & TOILET, UNISEX (TRPE1/TLTU1)

SPECIALTY MEDICAL CLINICS

CEILING PLAN

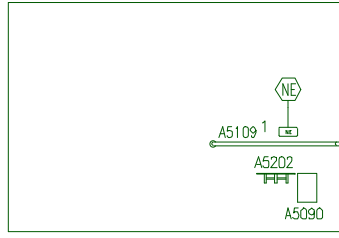
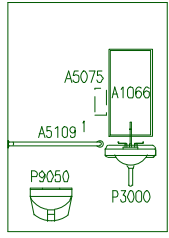
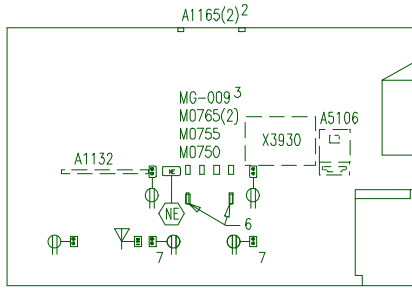
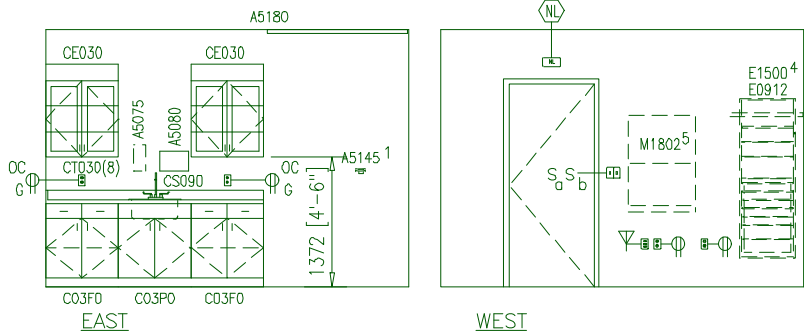
22.13 NSM (238 NSF)

0 1000 2000



DATE: 01/28/2002

1:50 SCALE (MILLIMETERS)



- KEY NOTES**
1. MOUNT A5145, HOOK, AT 1372 [4'-6"] AFF. PROVIDE 2-A5145'S FOR NAVY PROJECTS ONLY. MOUNT 1-A5145 AT 1372 [4'-6"] AFF AND 1-A5145 AT 1524 [5'-0"] AFF.
 2. PROVIDE A1165, IV TRACKS, FOR NAVY PROJECTS ONLY.
 3. PROVIDE BOTTLED GAS IF BUILDING PIPED MCA AND OX ARE NOT AVAILABLE.
 4. LENGTH OF E1500, WALL MOUNTED RAIL, TO BE DETERMINED BY MANUFACTURER/INSTALLER.
 5. COORDINATE LOCATIONS OF ELECTRICAL AND DATA OUTLETS WITH M1802, WALL MOUNTED, FOLD DOWN COMPUTER.
 6. VACUUM SLIDE.
 7. UTILITIES AND DEVICES INDICATED ARE FOR A CLINIC OR HOSPITAL WITH AN ALTERNATE POWER SOURCE.

- General Notes:**
1. For typical equipment mounting heights see "TYPICAL EQUIPMENT MOUNTING HEIGHTS" drawing.
 2. MIL-STD-1691 data can only be accessed from the Equipment Plan.

- KEY NOTES**
1. PROVIDE A5109, GRAB BAR, THAT COMPLIES WITH ADA.

TREATMENT ROOM, PROTOSCOPIC
EXAM & TOILET, UNISEX (TRPE1/TLTU1)

SPECIALTY MEDICAL CLINICS

ELEVATIONS 22.13 NSM (238 NSF)

DATE: 01/28/2002

0 1000 2000

1:50 SCALE (MILLIMETERS)