

KEY NOTES

1. PROVIDE A1165, IV TRACKS, FOR NAVY PROJECTS ONLY.

TREATMENT ROOM,
EMERGENCY TRAUMA, 1 BED (TRET3)

EMERGENCY SERVICES

CEILING PLAN

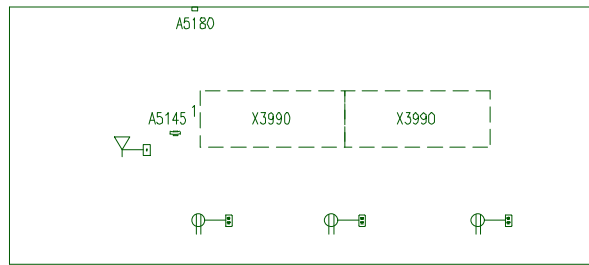
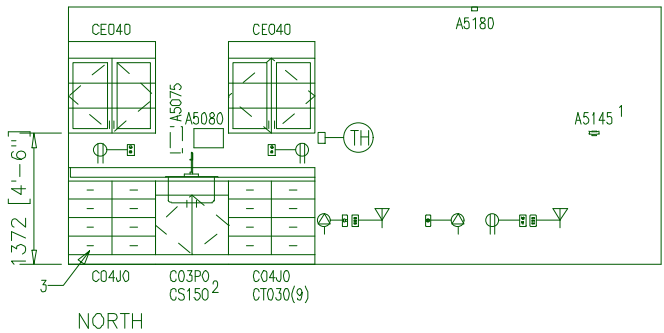
36.83 NSM (396 NSF)

0 1000 2000



DATE: 07/12/2001

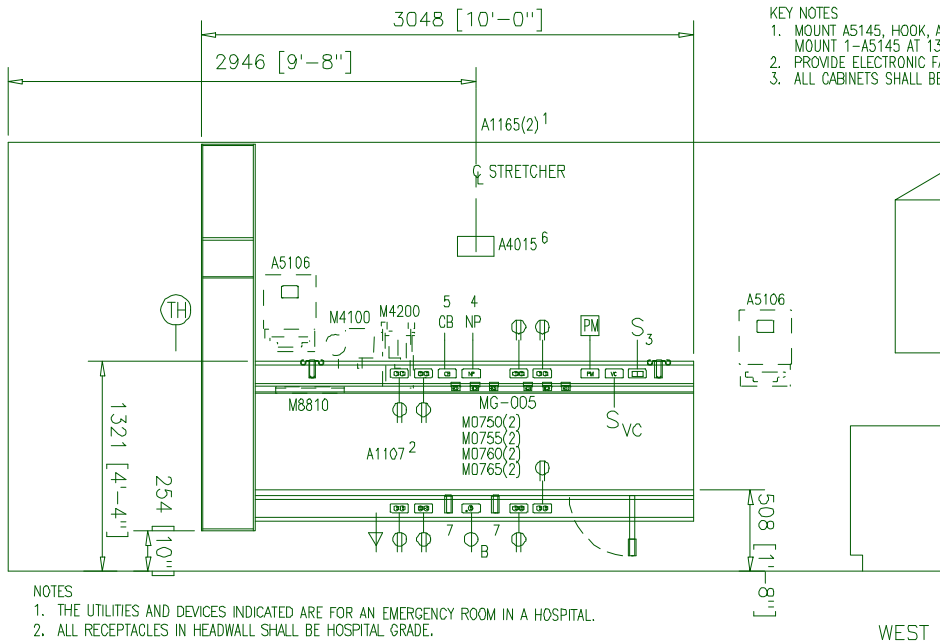
1:50 SCALE (MILLIMETERS)



SOUTH

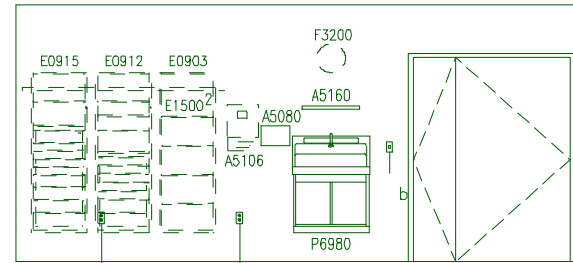
General Notes:

1. For typical equipment mounting heights see "TYPICAL EQUIPMENT MOUNTING HEIGHTS" drawing.
2. MIL-STD-1691 data can only be accessed from the Equipment Plan.



KEY NOTES

1. MOUNT A5145, HOOK, AT 1372 [4'-6"] AFF. PROVIDE 2-A5145'S FOR NAVY PROJECTS ONLY. MOUNT 1-A5145 AT 1372 [4'-6"] AFF AND 1-A5145 AT 1524 [5'-0"] AFF.
2. PROVIDE ELECTRONIC FAUCET.
3. ALL CABINETS SHALL BE LOCKING.



EAST

KEY NOTES

1. A4015, ELAPSED TIME CLOCK, IS OPTIONAL.
2. LENGTH OF E1500, WALL MOUNTED RAIL, TO BE DETERMINED BY MANUFACTURER/INSTALLER.

TREATMENT ROOM, EMERGENCY TRAUMA, 1 BED (TRET3)

EMERGENCY SERVICES

ELEVATIONS

DATE: 07/12/2001

0 1000 2000

36.83 NSM (396 NSF)

1:50 SCALE (MILLIMETERS)

NOTES

1. THE UTILITIES AND DEVICES INDICATED ARE FOR AN EMERGENCY ROOM IN A HOSPITAL.
2. ALL RECEPTACLES IN HEADWALL SHALL BE HOSPITAL GRADE.

KEY NOTES

1. PROVIDE A1165, IV TRACKS FOR NAVY PROJECTS ONLY.
2. PROVIDE A1108, MOVEABLE HEADWALL, INSTEAD OF A1107, UTILITY RAIL SYSTEM, FOR NAVY PROJECTS.
3. SWITCH CONTROLS CEILING MOUNTED FLUORESCENT LIGHT FIXTURES.
4. TONE/VISUAL OR AUDIO/VISUAL AS REQUIRED BY USING MILITARY DEPARTMENT.
5. CODE BLUE AS REQUIRED BY USING MILITARY DEPARTMENT.
6. A4015, ELAPSED TIME CLOCK, IS OPTIONAL.
7. VACUUM SLIDE.

Project Rooms (User Contents Only)

As of 10/04/2005

Page 1

Room Code: TRET3 Room Qty: 1 Room Area: 396.39 Room Description: TX ROOM, EMERGENCY TRAUMA, 1 BED

JSN	NOMENCLATURE	Qty	UNIT	LOG	Utl	Utl	Utl	Utl	Utl	Utl
			ISSUE	CAT	1	2	3	4	5	6

Equipment per Room:

A1107	Rail System , Utility, Gas and Electric	1	EA	A	.	F	G	.	.	A
A1165	Track, IV, Ceiling Mounted, 7 Foot	2	EA	A
A4015	Clock, Elapsed Time, Electric	1	EA	A	.	A	.	.	.	D
A5075	Dispenser, Soap, Disposable	1	EA	C
A5080	Dispenser, Paper Towel, SS, Surface Mounted	2	EA	A
A5106	Waste Disposal Unit, Sharps w/Glove Dispenser	3	EA	C
A5145	Hook, Garment, Double, SS, Surface Mounted	2	EA	A
A5160	Shelf, 8" Depth, SS, Surface Mounted	1	EA	A
A5180	Track, Cubicle, Surface Mounted, With Curtain	1	FT	A
C03P0	Cabinet, Sink, U/C/B, 2 Door, 36x30x22	1	EA	A
C04E0	Cabinet, U/C/B, 1 Shelf, 1 Drawer, 2 DO, 36x36x2	1	EA	A
C04J0	Cabinet, U/C/B, 8 Half Drawer, 36x36x22	1	EA	A
CE040	Cabinet, W/H, 2 SH, 2 GDO, Sloping Top, 38x36x13	2	EA	A
CS150	Sink, SS, Single Compartment, 10x19x16 ID	1	EA	A	D
CT030	Countertop, High Pressure Laminate	9	LF	A
E0903	Locker, Supply, w/Shelves, Wall Mtd, 23"W x 20"D	1	EA	C
E0912	Locker, Supply, Med Surg, Wall Mtd	1	EA	C
E0915	Locker, Supply, Medication, Wall Mtd, 23"W x 20"	1	EA	C
E0945	Cart, Computer, Mobile, 48"H x 54"W x 22"D	1	EA	C
E0948	Cart, General Storage, Mobile, 42"H x 32"W x 22"	1	EA	C
E0954	Cart, Emergency, Mobile, 66"H x 52"W x 22"D	1	EA	C
E1500	Rail, MOD, W/MNTD, HX144XD	1	EA	C
F0340	Stool, Self Adjusting	1	EA	C
F0355	Footstool, Straight	1	EA	C
F2000	Basket, Wastepaper, Round, Metal, 18 H x 16 Dia.	2	EA	C
F3200	Clock, Battery, 12" Diameter	1	EA	C
M0750	Flowmeter, Air, Connect w/50 PSI Supply	2	EA	C	.	.	K	.	.	.
M0755	Flowmeter, Oxygen, Low Flow	2	EA	C	.	.	A	.	.	.
M0760	Proportioner (Blender), Oxygen/Air	2	EA	C	.	.	F	.	.	.
M0765	Regulator, Vacuum	2	EA	C	.	.	B	.	.	.
M0800	Center, Infant Care	1	EA	C	.	A	E	.	.	.
M1800	Computer, Microprocessing, w/CRT Monitor	1	EA	C	.	A
M3070	Hamper, Linen, Mobile, w/Lid	1	EA	C

M3072	Frame, Infectious Waste Bag w/Lid	1	EA	C
M3110	Cabinet, Warming, F/S, 2 Heated Compartment, Ele	1	EA	A	.	F
M3150	Distribution System, Medication, Automatic	1	EA	C	B	A
M4100	Sphygmomanometer, Aneroid, Wall Mounted	1	EA	C
M4116	Monitor, Vital Signs	1	EA	C	.	A
M4200	Otoscope/Ophthalmoscope, Wall Mounted	1	EA	C	.	A
M4255	Stand, IV, Adjustable	2	EA	C
M4266	Pump, Volumetric, Infusion, Multiple Line	4	EA	C	.	A
M4655	Stretcher, Mobile, CRS, 9 Position	1	EA	C
M7490	Light, Surg, Ceiling Mtd, Dual, Unequal Dia Head	1	EA	A	.	F
M7660	Defibrillator/Monitor/Recorder, Portable	1	EA	C	.	A
M7710	Electrocardiograph, 12 Lead, Portable	1	EA	C	.	A
M7845	Monitor, Physiological, Bedside, 4 Channel	1	EA	C	.	A	.	.	.	D
M7905	Oximeter, Pulse	1	EA	C	.	A
M7910	Thermometer, Electronic	1	EA	C
M8810	Stand, Mayo	1	EA	C
M8900	Carriage, Pail, CRS, Without Pail	1	EA	C
M8905	Pail, Utility, CRS, Without Carriage	1	EA	C
M8970	Warmer, Blood, High Volume	1	EA	C	.	B
P6980	Sink, Scrub, SS, 1-3 Bay, With Knee Valve	1	EA	A	D	B
X3990	Illuminator, Film, 4 Panels, Wall Mounted	2	EA	C	.	A

=====

GRAND TOTAL

78