

KEY NOTES  
 1. PROVIDE A1165, IV TRACKS, FOR NAVY PROJECTS ONLY.

RECOVERY ROOM, INPATIENT  
 & NURSE STATION, SUBSTATION (RRSS1/NSTA3)

SURGERY (INPATIENT & AMBULATORY)

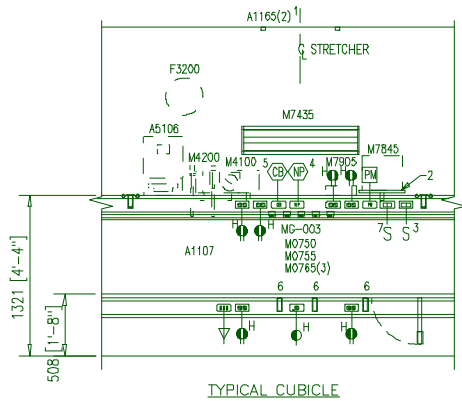
CEILING PLAN 57.74 NSM (621 NSF)

DATE: 01/28/2002

0 1000 2000



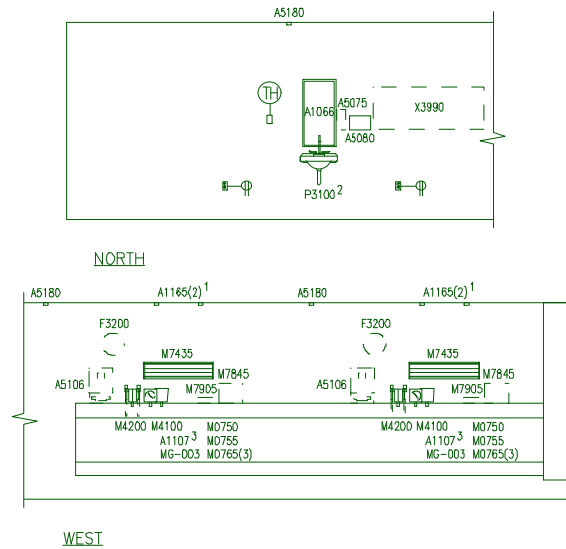
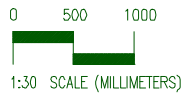
1:50 SCALE (MILLIMETERS)



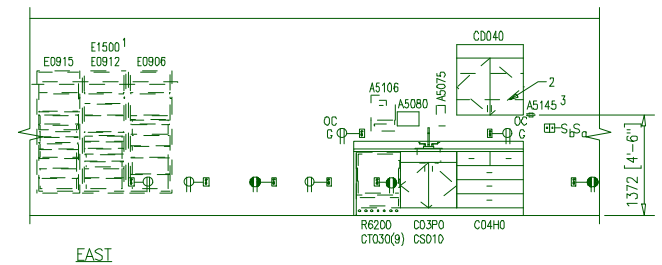
TYPICAL CUBICLE

- NOTES
1. THE UTILITIES AND DEVICES INDICATED ARE FOR AN EMERGENCY ROOM IN A HOSPITAL.
  2. ALL RECEPTACLES IN HEADWALL SHALL BE HOSPITAL GRADE.

- KEY NOTES
1. PROVIDE A1165, IV TRACKS FOR NAVY PROJECTS ONLY.
  2. MONITOR SHELF.
  3. SWITCH CONTROLS CEILING MOUNTED FLUORESCENT LIGHT FIXTURES.
  4. TONE/VISUAL OR AUDIO/VISUAL PATIENT STATION AS REQUIRED BY THE USING MILITARY DEPARTMENT.
  5. CODE BLUE AS REQUIRED BY USING MILITARY DEPARTMENT.
  6. VACUUM SLIDE.
  7. TWO MOMENTARY CONTACT TOGGLE SWITCHES FOR CONTROL OF UP AND DOWN LIGHT SECTIONS OF FIXTURE M7435.



- KEY NOTES
1. PROVIDE A1165, IV TRACKS, FOR NAVY PROJECTS ONLY.
  2. PROVIDE AT LEAST ONE HANDWASHING FACILITY OR ONE FOR EVERY THIRD RECOVERY MODULE. P3200, ELECTRONIC LAVATORY, MAY BE USED INSTEAD OF P3100, LAVATORY. FOR THE P3200 PROVIDE EITHER BATTERY POWER OR HARD WIRED CONNECTION.
  3. SEE ELEVATION OF A1107, UTILITY RAIL SYSTEM, FOR UTILITIES.



- KEY NOTES
1. LENGTH OF E1500, WALL MOUNTED RAIL, TO BE DETERMINED BY MANUFACTURER/INSTALLER.
  2. ALL CABINETS SHALL BE LOCKING.
  3. MOUNT AS145, HOOK, AT 1372 [4'-6"] AFF.

General Notes:

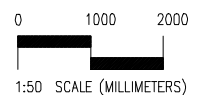
1. For typical equipment mounting heights see "TYPICAL EQUIPMENT MOUNTING HEIGHTS" drawing.
2. MIL-STD-1691 data can only be accessed from the Equipment Plan.

RECOVERY ROOM, INPATIENT  
& NURSE STATION, SUBSTATION (RRSS1/NSTA3)

SURGERY (INPATIENT & AMBULATORY)

ELEVATIONS 57.74 NSM (621 NSF)

DATE: 01/28/2002



Project Rooms (User Contents Only)

As of 08/23/2005

Page 1

Room Code: NSTA3 Room Qty: 1 Room Area: 219.63 Room Description: NURSE STATION, SUBSTATION

JSN	NOMENCLATURE	Qty	UNIT	LOG	Ut1	Ut1	Ut1	Ut1	Ut1	Ut1
			ISSUE	CAT	1	2	3	4	5	6
Equipment per Room:										
A5075	Dispenser, Soap, Disposable	1	EA	C	.	.	.	.	.	.
A5080	Dispenser, Paper Towel, SS, Surface Mounted	1	EA	A	.	.	.	.	.	.
A5106	Waste Disposal Unit, Sharps w/Glove Dispenser	1	EA	C	.	.	.	.	.	.
A5145	Hook, Garment, Double, SS, Surface Mounted	1	EA	A	.	.	.	.	.	.
C03P0	Cabinet, Sink, U/C/B, 2 Door, 36x30x22	1	EA	A	.	.	.	.	.	.
C04H0	Cabinet, U/C/B, 2 Half Drawer, 3 Drawer, 36x36x2	1	EA	A	.	.	.	.	.	.
CD040	Cabinet, W/H, 2 Shelf, 2 DO, Sloping Top, 38x36x	1	EA	A	.	.	.	.	.	.
CS010	Sink, SS, Single Compartment, 7.5x12x12 ID	1	EA	A	D	.	.	.	.	.
CT030	Countertop, High Pressure Laminate	9	LF	A	.	.	.	.	.	.
E0406	Nurse Station, Angle, Free Standing, 96" W	1	EA	F	.	A	.	.	.	.
E0906	Locker, Supply, General, Wall Mtd, 23"W x 20"D	1	EA	C	.	.	.	.	.	.
E0912	Locker, Supply, Med Surg, Wall Mtd	1	EA	C	.	.	.	.	.	.
E0915	Locker, Supply, Medication, Wall Mtd, 23"W x 20"	1	EA	C	.	.	.	.	.	.
E0954	Cart, Emergency, Mobile, 66"H x 52"W x 22"D	1	EA	C	.	.	.	.	.	.
E1500	Rail, MOD, W/MNTD, HX144XD	1	EA	C	.	.	.	.	.	.
F0280	Chair, Swivel, Low Back	3	EA	C	.	.	.	.	.	.
F2000	Basket, Wastepaper, Round, Metal, 18 H x 16 Dia.	2	EA	C	.	.	.	.	.	.
M1800	Computer, Microprocessing, w/CRT Monitor	1	EA	C	.	A	.	.	.	.
M1825	Printer, Computer	1	EA	C	.	A	.	.	.	.
M1855	Facsimile Machine	1	EA	C	.	A	.	.	.	.
M3110	Cabinet, Warming, F/S, 2 Heated Compartment, Ele	1	EA	A	.	F	.	.	.	.
M3150	Distribution System, Medication, Automatic	1	EA	C	B	A	.	.	.	.
M7655	Defibrillator/Cardioscope, 5-Lead	1	EA	C	.	A	.	.	.	.
M7850	Monitor, Physiological, Central, 8 Bed, Color	1	EA	C	.	A	.	.	.	D
M8172	Stimulator, Transcutaneous Electric Nerve	1	EA	C	.	A	.	.	.	.
R4650	Ice Maker, Flaked, With Dispenser, 71x19x24	1	EA	A	B	B	.	.	.	.
R6200	Refrigerator, U/C or F/S, 5 Cu Ft, 35x24x26	1	EA	C	.	A	.	.	.	.
A1066	Mirror, Float Glass, With SS Frame, 36X18	1	EA	A	.	.	.	.	.	.
A1107	Rail System, Utility, Gas and Electric	2	EA	A	.	F	G	.	.	A
A1165	Track, IV, Ceiling Mounted, 7 Foot	4	EA	A	.	.	.	.	.	.
A5075	Dispenser, Soap, Disposable	1	EA	C	.	.	.	.	.	.
A5080	Dispenser, Paper Towel, SS, Surface Mounted	1	EA	A	.	.	.	.	.	.

A5106	Waste Disposal Unit, Sharps w/Glove Dispenser	2	EA	C	.	.	.	.	.	.
A5180	Track, Cubicle, Surface Mounted, With Curtain	2	FT	A	.	.	.	.	.	.
E0948	Cart, General Storage, Mobile, 42"H x 32"W x 22"	2	EA	C	.	.	.	.	.	.
F0205	Chair, Side With Arms	1	EA	C	.	.	.	.	.	.
F0270	Chair, Rocking, High Back	1	EA	C	.	.	.	.	.	.
F0340	Stool, Self Adjusting	2	EA	C	.	.	.	.	.	.
F2000	Basket, Wastepaper, Round, Metal, 18 H x 16 Dia.	3	EA	C	.	.	.	.	.	.
F3200	Clock, Battery, 12" Diameter	2	EA	C	.	.	.	.	.	.
M0750	Flowmeter, Air, Connect w/50 PSI Supply	2	EA	C	.	.	K	.	.	.
M0755	Flowmeter, Oxygen, Low Flow	2	EA	C	.	.	A	.	.	.
M0765	Regulator, Vacuum	6	EA	C	.	.	B	.	.	.
M3070	Hamper, Linen, Mobile, w/Lid	1	EA	C	.	.	.	.	.	.
M3072	Frame, Infectious Waste Bag w/Lid	3	EA	C	.	.	.	.	.	.
M4100	Sphygmomanometer, Aneroid, Wall Mounted	2	EA	C	.	.	.	.	.	.
M4116	Monitor, Vital Signs	2	EA	C	.	A	.	.	.	.
M4200	Otoscope/Ophthalmoscope, Wall Mounted	2	EA	C	.	A	.	.	.	.
M4250	Pump, Syringe, Infusion	2	EA	C	.	A	.	.	.	.
M4255	Stand, IV, Adjustable	2	EA	C	.	.	.	.	.	.
M4266	Pump, Volumetric, Infusion, Multiple Line	2	EA	C	.	A	.	.	.	.
M4665	Stretcher, Recovery, Surgical	1	EA	C	.	.	.	.	.	.
M4815	Hypo/Hyperthermia Unit, Automatic/Manual, Mobile	1	EA	C	.	A	.	.	.	.
M4816	Warming Unit, Patient, Automatic/Manual, Air	2	EA	C	.	A	.	.	.	.
M7015	Crib	1	EA	C	.	.	.	.	.	.
M7040	Table, Overbed	1	EA	C	.	.	.	.	.	.
M7405	Light, Exam, Ceiling Mounted	2	EA	A	.	F	.	.	.	.
M7435	Light, Overbed, Direct And Indirect	2	EA	A	.	F	.	.	.	.
M7845	Monitor, Physiological, Bedside, 4 Channel	2	EA	C	.	A	.	.	.	D
M7905	Oximeter, Pulse	2	EA	C	.	A	.	.	.	.
M8755	Aspirator, Low Pressure/Low Volume, Surgical	1	EA	C	.	A	.	.	.	.
M8810	Stand, Mayo	2	EA	C	.	.	.	.	.	.
P3100	Lavatory, Vitreous China, Slab Type	1	EA	A	D	.	.	.	.	.
X3990	Illuminator, Film, 4 Panels, Wall Mounted	1	EA	C	.	A	.	.	.	.

=====

\*\*\*GRAND TOTAL\*\*\*

107