

NOTES

1. AN E0954, EMERGENCY CART, AND A M7660, DEFIBRILLATOR, SHALL BE IN THE VICINITY OF THE DIALYSIS STATIONS.
2. M7850, CENTRAL PHYSIOLOGICAL MONITOR, AND M7845, BEDSIDE PHYSIOLOGICAL MONITOR, MAY BE ADDED. VERIFY WITH USER.
3. A M4030, SIT/STAND SCALE, AND A M3150, AUTOMATIC MEDICATION DISTRIBUTION SYSTEM, SHALL BE IN THE VICINITY OF THE DIALYSIS STATIONS.

KEY NOTES

1. P8705, DIALYSIS BOX, WITH COLD WATER AND DRAIN.
2. PROVIDE A1165, IV TRACKS, FOR NAVY PROJECTS ONLY.
3. P3200, UTR ELECTRONIC LAVATORY, MAY BE USED INSTEAD OF P3100, LAVATORY. FOR THE P3200 PROVIDE EITHER BATTERY POWER OR HARD WIRED CONNECTION. PROVIDE ONE P3100 AND ACCESSORIES FOR EVERY 2 DIALYSIS STATIONS.
4. SEE ELEVATION OF A1107, UTILITY RAIL SYSTEM, FOR UTILITIES.

RENAL DIALYSIS STATION, CHAIR (RDC01)

SPECIALTY MEDICAL CLINICS

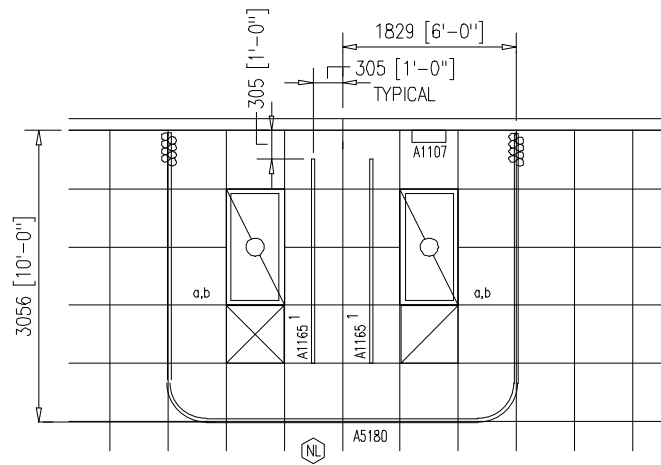
FLOOR/EQUIPMENT PLAN 13.40 NSM (144 NSF)

DATE: 01/28/2002

0 1000 2000



1:50 SCALE (MILLIMETERS)



KEY NOTES

1. PROVIDE A1165, IV TRACKS, FOR NAVY PROJECTS ONLY.

RENAL DIALYSIS STATION, CHAIR (RDC01)

SPECIALTY MEDICAL CLINICS

CEILING PLAN

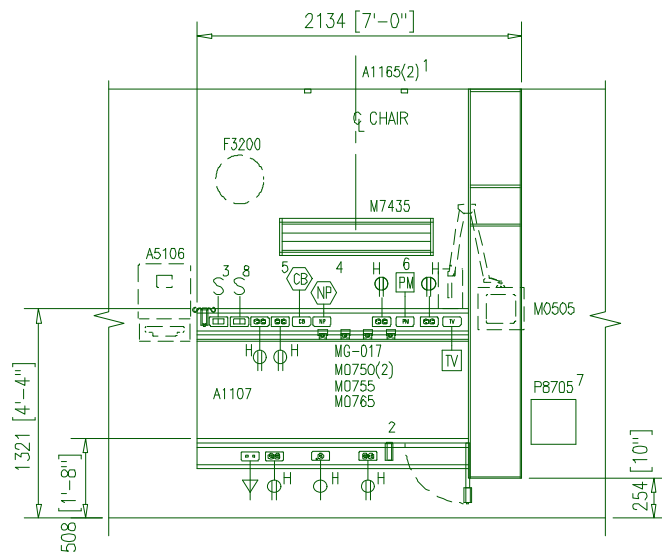
13.40 NSM (144 NSF)

DATE: 01/28/2002

0 1000 2000



1:50 SCALE (MILLIMETERS)

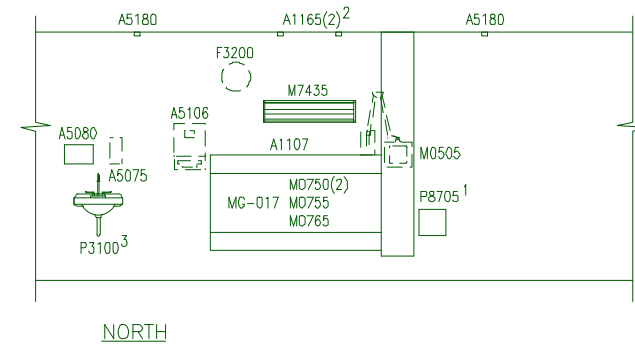
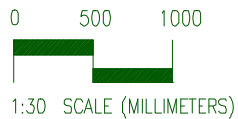


NOTES

1. ALL RECEPTACLES IN HEADWALL SHALL BE HOSPITAL GRADE.

KEY NOTES

1. PROVIDE A1165, IV TRACKS FOR NAVY PROJECTS ONLY.
2. VACUUM SLIDE.
3. SWITCH CONTROLS CEILING MOUNTED FLUORESCENT LIGHT FIXTURES.
4. TONE/VISUAL OR AUDIO/VISUAL AS REQUIRED BY USING MILITARY DEPARTMENT.
5. CODE BLUE AS REQUIRED BY USING MILITARY DEPARTMENT.
6. M7850, CENTRAL PHYSIOLOGICAL MONITOR, AND M7435, BEDSIDE PHYSIOLOGICAL MONITOR, MAY BE ADDED. VERIFY WITH USER.
7. P8705, DIALYSIS BOX, WITH COLD WATER AND DRAIN.
8. TWO LOW VOLTAGE MOMENTARY CONTACT TOGGLE SWITCHES TO CONTROL UP AND DOWN LIGHT SECTIONS OF FIXTURE M7435.



KEY NOTES

1. P8705, DIALYSIS BOX, WITH COLD WATER AND DRAIN.
2. PROVIDE A1165, IV TRACKS, FOR NAVY PROJECTS ONLY.
3. P3200, ELECTRONIC LAVATORY, MAY BE USED INSTEAD OF P3100, LAVATORY. FOR THE P3200 PROVIDE EITHER BATTERY POWER OR HARD WIRED CONNECTION. PROVIDE ONE P3100 AND ACCESSORIES FOR EVERY 2 DIALYSIS STATIONS.

General Notes:

1. For typical equipment mounting heights see "TYPICAL EQUIPMENT MOUNTING HEIGHTS" drawing.
2. MIL-STD-1691 data can only be accessed from the Equipment Plan.

RENAL DIALYSIS STATION, CHAIR (RDC01)

SPECIALTY MEDICAL CLINICS

ELEVATIONS

13.40 NSM (144 NSF)

DATE: 01/28/2002

0 1000 2000

1:50 SCALE (MILLIMETERS)

Project Rooms (User Contents Only)

As of 08/23/2005

Page 1

Room Code: RDC01 Room Qty: 1 Room Area: 144.18 Room Description: RENAL DIALYSIS STATION, CHAIR

JSN	NOMENCLATURE	Qty	UNIT	LOG	Utl	Utl	Utl	Utl	Utl	Utl
			ISSUE	CAT	1	2	3	4	5	6

Equipment per Room:

A1107	Rail System , Utility, Gas and Electric	1	EA	A	.	F	G	.	.	A
A1165	Track, IV, Ceiling Mounted, 7 Foot	2	EA	A
A5075	Dispenser, Soap, Disposable	1	EA	C
A5080	Dispenser, Paper Towel, SS, Surface Mounted	1	EA	A
A5106	Waste Disposal Unit, Sharps w/Glove Dispenser	1	EA	C
A5180	Track, Cubicle, Surface Mounted, With Curtain	1	FT	A
E0948	Cart, General Storage, Mobile, 42"H x 32"W x 22"	1	EA	C
F0205	Chair, Side With Arms	1	EA	C
F0340	Stool, Self Adjusting	1	EA	C
F2000	Basket, Wastepaper, Round, Metal, 18 H x 16 Dia.	1	EA	C
F3200	Clock, Battery, 12" Diameter	1	EA	C
M0505	Television, Color, Bedside	1	EA	C	.	F
M0750	Flowmeter, Air, Connect w/50 PSI Supply	2	EA	C	.	.	K	.	.	.
M0755	Flowmeter, Oxygen, Low Flow	1	EA	C	.	.	A	.	.	.
M0765	Regulator, Vacuum	1	EA	C	.	.	B	.	.	.
M1715	Hemodialysis Unit, Hollow Fiber or Plate	1	EA	C	E	A
M3070	Hamper, Linen, Mobile, w/Lid	1	EA	C
M3072	Frame, Infectious Waste Bag w/Lid	1	EA	C
M4116	Monitor, Vital Signs	1	EA	C	.	A
M4255	Stand, IV, Adjustable	1	EA	C
M4266	Pump, Volumetric, Infusion, Multiple Line	1	EA	C	.	A
M4905	Chair, Dialysis	1	EA	C
M7040	Table, Overbed	1	EA	C
M7435	Light, Overbed, Direct And Indirect	1	EA	A	.	F
M7905	Oximeter, Pulse	1	EA	C	.	A
P3100	Lavatory, Vitreous China, Slab Type	1	EA	A	D
P8705	Dialysis Box, Recessed, Single Valve	1	EA	A	B

=====

GRAND TOTAL

29