

KEY NOTES

- 1. 84" AFF FOR PATIENT MONITOR
- 2. X-RAY REMOTE CONTROL W/CORDED SWITCH

**DENTAL TREATMENT ROOM,
ORAL SURGERY(DNTS1)**

3.20.01

DENTAL CLINIC

FLOOR/EQUIPMENT PLAN

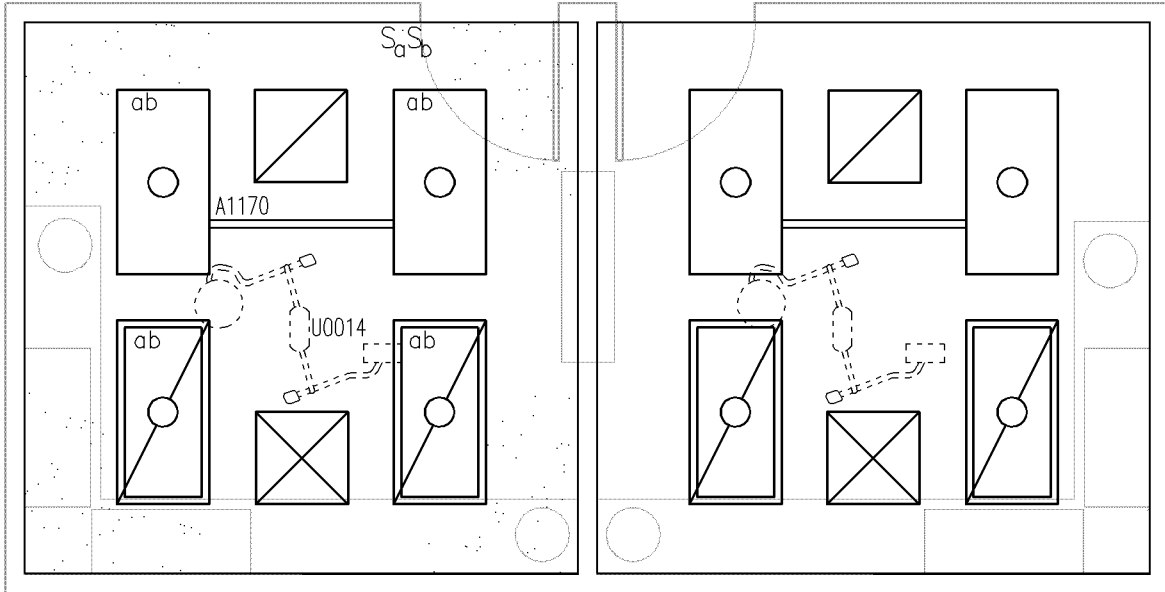
13.38 NSM (144 NSF)

DATE: 04/24/2006

0 1000 2000



1:50 SCALE (MILLIMETERS)



**DENTAL TREATMENT ROOM,
ORAL SURGERY(DNTS1)**

3.20.01

DENTAL CLINIC

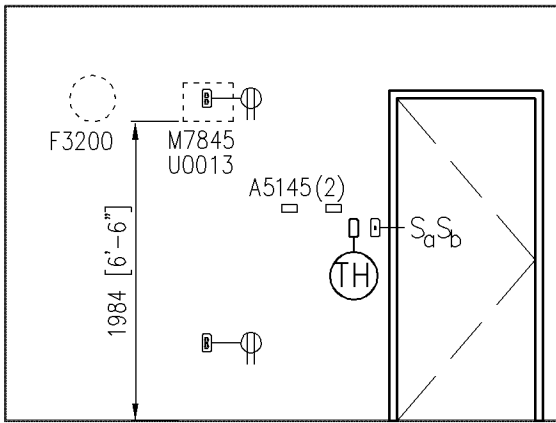
CEILING PLAN

DATE: 04/24/2006

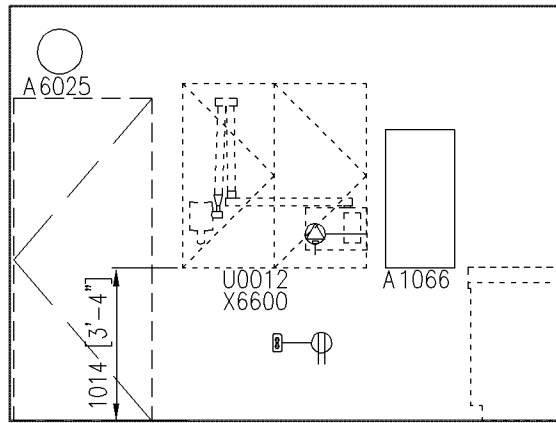
0 1000 2000



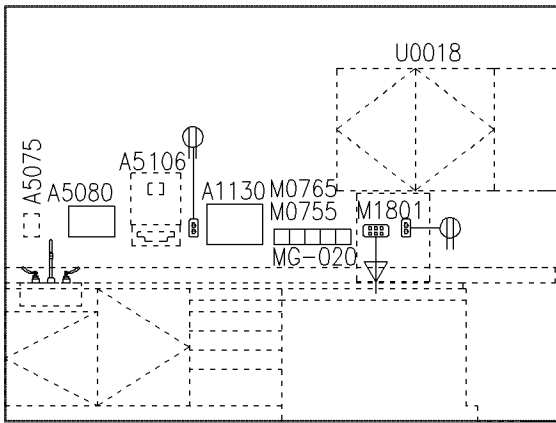
1:50 SCALE (MILLIMETERS)



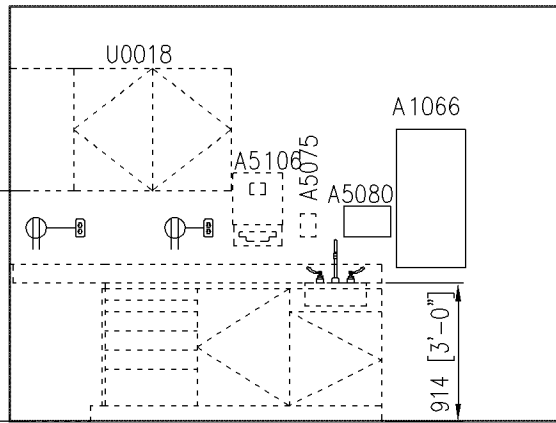
NORTH



EAST



SOUTH



WEST

NOTES

1. SEE TYPICAL EQUIPMENT MOUNTING HEIGHTS SCHEDULE, SECTION 7.01

KEY NOTES

1. X-RAY REMOTE CONTROL UNIT

**DENTAL TREATMENT ROOM,
ORAL SURGERY(DNTS1)**

3.20.01

DENTAL CLINIC

ELEVATIONS

DATE: 04/24/2006

0 1000 2000



1:50 SCALE (MILLIMETERS)

Medical Equipment Room Guide Plates

3.20 Dental Unit

Plate Number 3.20.01

Room Name: Dental Treatment Room, Oral Surgery

SEPS# DNTS1

| JSN | Nomenclature | Qty | Army | Navy | AF Cat | Utilities | | | | | |
|-------|---|-----|------|------|--------|-----------|---|---|---|---|-----|
| | | | Cat | Cat | | 1 | 2 | 3 | 4 | 5 | 6 |
| A1066 | Mirror, Floatglass, w/SS Frame | 2 | A | A | A | . | . | . | . | . | . |
| A1130 | Cabinet, Control, Nitrogen | 1 | A | A | A | . | . | . | B | . | . |
| A1170 | Track, IV, Ceiling Mounted, 4 Foot | 1 | A | A | A | . | . | . | . | . | . |
| A5075 | Dispenser, Soap, Disposable | 2 | C | C | C | . | . | . | . | . | . |
| A5080 | Dispenser, Paper Towel, SS, Surface Mounted | 2 | A | A | A | . | . | . | . | . | . |
| A5106 | Waste Disposal Unit, Sharps w/Glove Dispenser | 2 | C | C | C | . | . | . | . | . | . |
| A5145 | Hook, Garment, Double, SS, Surface Mounted | 2 | A | A | A | . | . | . | . | . | . |
| A6025 | Mirror, Safety, Convex, 8" Dia. | 1 | A | A | A | . | . | . | . | . | . |
| D0100 | Analgesia Unit, Inhalation, Central Gases/Vacuum or | 1 | C | C | C | . | . | . | . | . | . |
| D0101 | Analgesia Unit, Inhalation, Central Vacuum Only | 1 | C | C | C | . | . | E | C | . | . |
| D3310 | Chair, Procedure, Dental | 1 | C | C | C | . | A | . | . | . | . |
| D3380 | Stool, Operating, Dental, Doctor | 1 | C | C | C | . | . | . | . | . | . |
| D3390 | Stool, Operating, Dental, Assistant | 1 | C | C | C | . | . | . | . | . | . |
| F2010 | Basket, Wastepaper, Step-On | 2 | C | C | C | . | . | . | . | . | . |
| F3200 | Clock, Battery, 12" Diameter | 1 | C | C | C | . | . | . | . | . | . |
| M0755 | Flowmeter, Oxygen, Low Flow | 1 | C | C | C | . | . | A | . | . | . |
| M0765 | Regulator, Vacuum | 1 | C | C | C | . | . | B | . | . | . |
| M1801 | Computer, Microprocessing, w/Flat Panel Monitor | 1 | C | C | C | . | A | . | . | . | . |
| M7845 | Monitor, Physiological, Bedside, 4 Channel | 1 | C | C | C | . | A | . | . | . | . |
| M8805 | Table, Instrument, Straddle | 1 | C | C | C | . | . | . | . | . | . |
| U0009 | Cabinet, Dental, Assistant's, Oral Surgery | 1 | A | E | E | B | . | . | . | . | . |
| U0010 | Cabinet, Dental, Doctor's, Oral Surgery | 1 | A | E | E | B | . | . | . | . | . |
| U0012 | Cabinet, Dental, X-ray, Shared, 50" W. | 1 | A | E | E | . | . | . | . | . | . |
| U0013 | Mount, Wall, For Patient Monitor | 1 | E | E | E | . | . | . | . | . | . |
| U0014 | Light, Minor Surgery, Dual Head | 1 | E | E | E | . | F | . | . | . | J |
| U0015 | Digital x-ray unit | 1 | F | F | F | . | . | . | . | . | . |
| U0018 | Cabinet, Dental, Wall | 2 | A | E | E | . | . | . | . | . | . |
| X6600 | Radiographic Unit, Dental, Wall Mounted, 7 Ma (Shared) | 1 | F | F | F | . | A | . | . | . | B,J |

April 24, 2006