

DNSC4 - INTERIOR DESIGN

Floor Finish		Wall Finish		Ceiling Finish		Room Height	Room Noise		
Preferred	Alternate	Preferred	Alternate	Preferred	Alternate	ft - in	Min NC	Max NC	SC
SV	ET	GLG	-	AT2	-	8' - 6"	30	35	40

DNSC4 - DOOR SCHEDULE

Mark	Type	Count	Height	Width	Notes
			ft - in	ft - in	
A	Single-Flush	1	7' - 0"	3' - 0"	

**Room Description:** Dental, Instrument Decontamination, Medium

**NSF:** 120

**DNSC4**

**Plate Description:** Room/Equipment Isometric

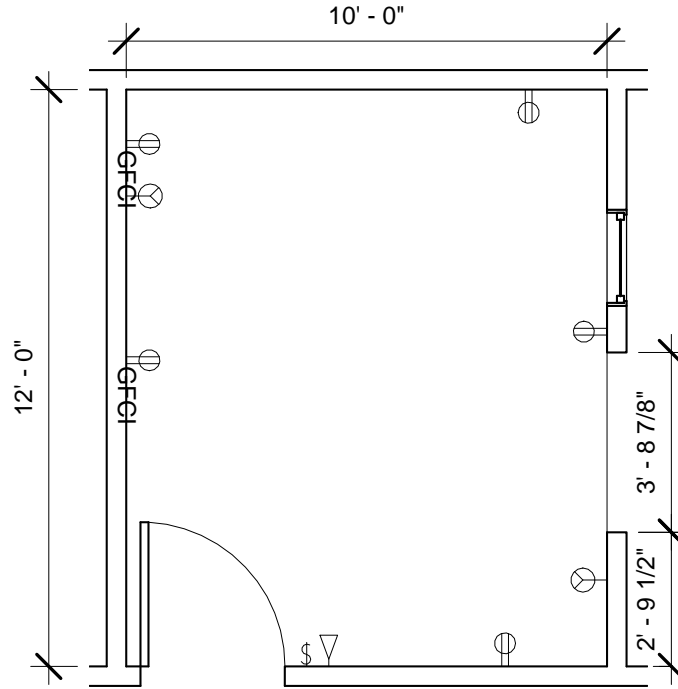
**Scale:**

Sheet

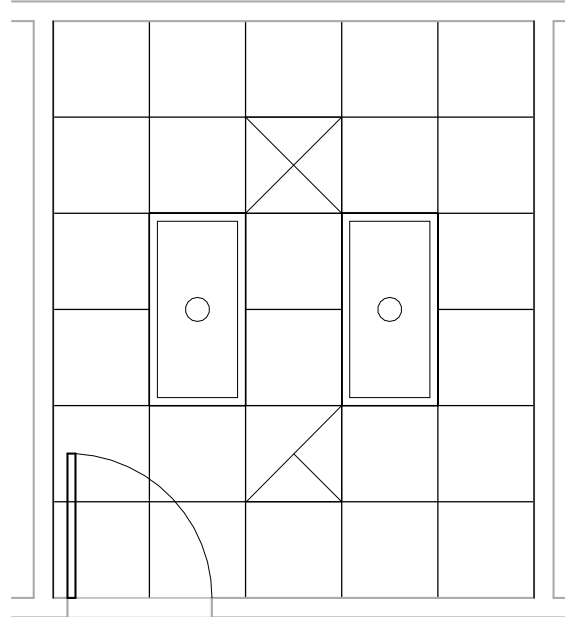
1

of

6

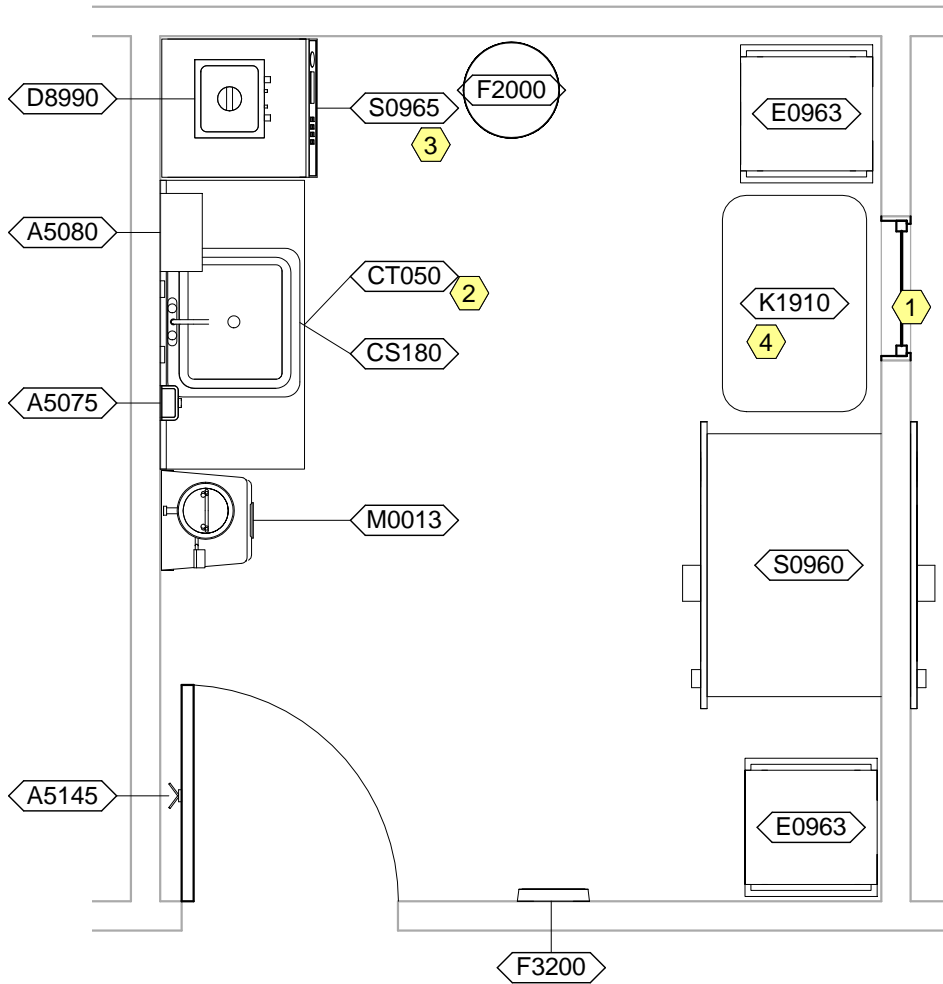


**DNSC4 - FLOOR PLAN**



**DNSC4 - CEILING PLAN**

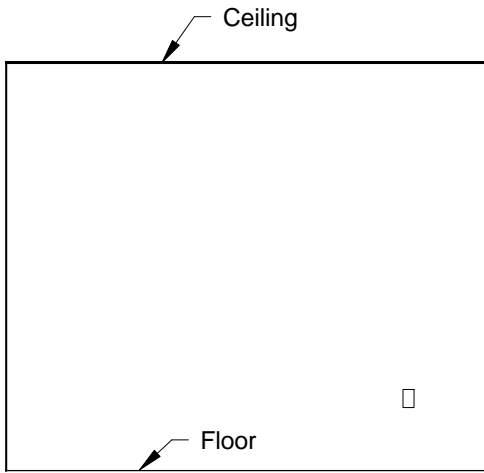
<b>Room Description:</b> Dental, Instrument Decontamination, Medium	<b>NSF:</b> 120	<b>DNSC4</b>	
<b>Plate Description:</b> Floor & Ceiling Plans	<b>Scale:</b> 1/4" = 1'-0"	Sheet <b>2</b>	of <b>6</b>



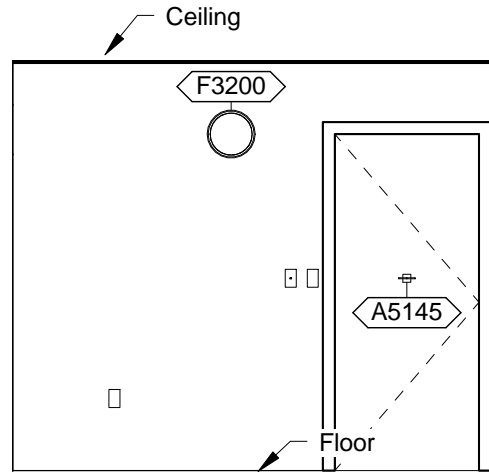
**DNSC4 - NOTES**

- 1 Pass Window, 24"W x 36"H.
- 2 JSN P8710, Utility Center, shall be included in Navy projects only.
- 3 If JSN S0965, Washer/Disinfector, Dental, does not include a finished top, then extend JSN CT050, Countertop, Stainless Steel, to cover.
- 4 JSN K1910, Table, shall be 36" wide and 24" deep with casters.

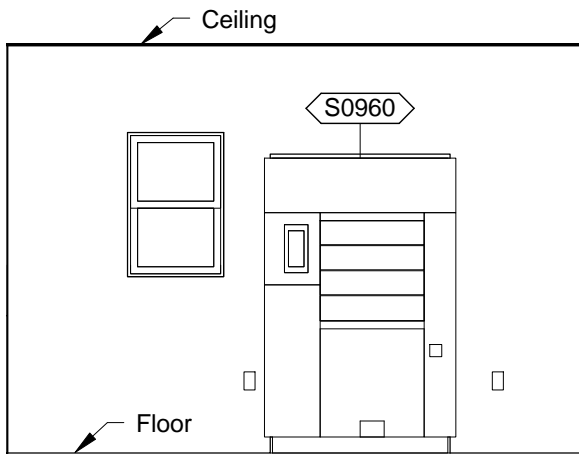
<b>Room Description:</b> Dental, Instrument Decontamination, Medium	<b>NSF:</b> 120	<b>DNSC4</b>	
<b>Plate Description:</b> Equipment Plan	<b>Scale:</b> 3/8" = 1'-0"	Sheet <b>3</b>	of <b>6</b>



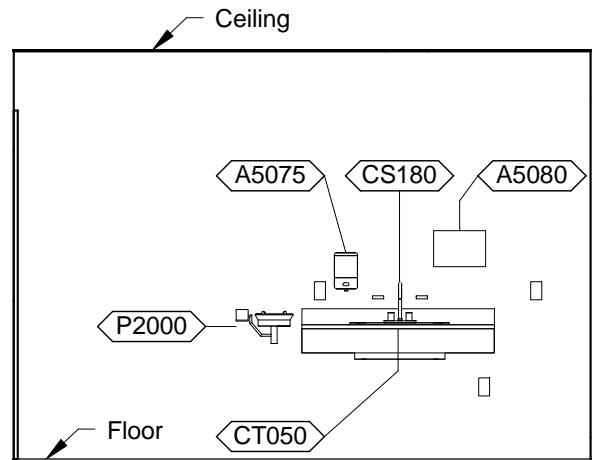
DNSC4 - PLAN NORTH



DNSC4 - PLAN SOUTH



DNSC4 - PLAN EAST



DNSC4 - PLAN WEST

**Room Description:** Dental, Instrument Decontamination, Medium

**NSF:** 120

**DNSC4**

**Plate Description:** Interior Room Elevations

**Scale:** 1/4" = 1'-0"

Sheet

4

of

6

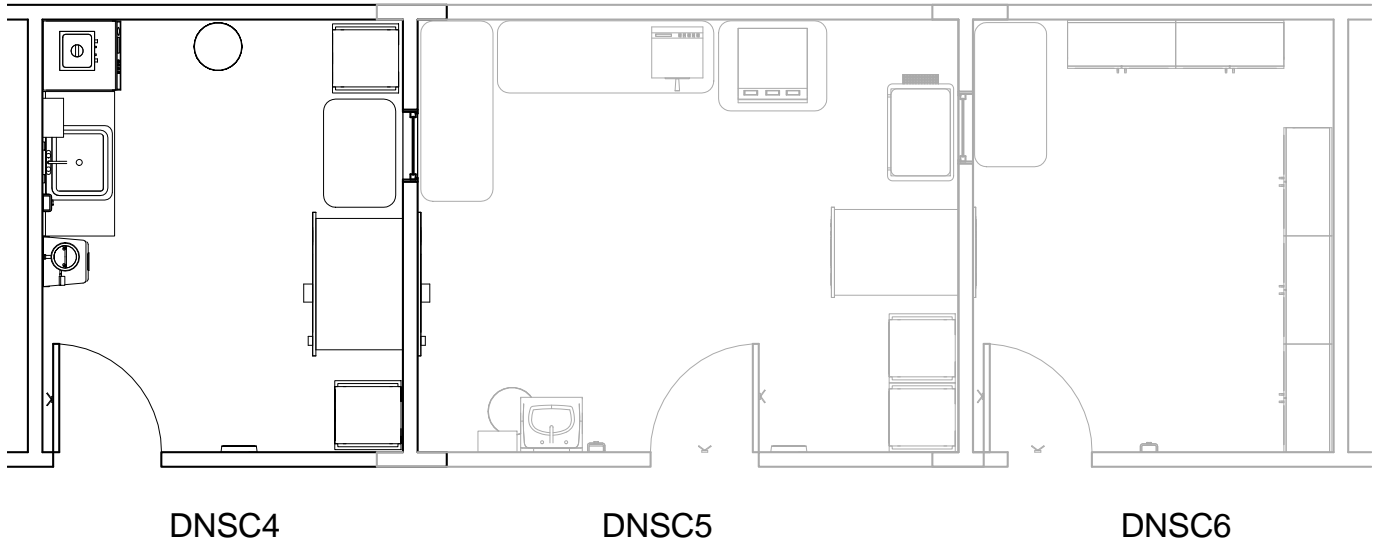
**DNESC4 - EQUIPMENT SCHEDULE**

JSN	Nomenclature	Qty	AR	Logistics			Utilities					
				NA	AF	VA	1	2	3	4	5	6
A5075	Dispenser, Soap, Disposable	1	C	C	C	C	-	-	-	-	-	-
A5080	Dispenser, Paper Towel, SS, Surface Mounted	1	A	A	A	A	-	-	-	-	-	-
A5145	Hook, Garment, Double, SS, Surface Mounted	1	A	A	A	A	-	-	-	-	-	-
C0039	Rail, Apron, 4x48x1	1	A	A	A	A	-	-	-	-	-	-
CS180	Sink, SS, Single Compartment, 12x22x16 ID	1	A	A	A	A	D	-	-	-	-	-
CT050	Countertop, Stainless Steel	1	A	A	A	A	-	-	-	-	-	-
D8990	Cleaner, Ultrasonic, 10-12 Quart Capacity	1	C	C	C	C	-	A	-	-	-	-
D9059	Coupler, Quick Disconnect	2	A	A	A	A	-	-	C	-	-	-
E0963	Cart, General Storage, Mobile	2	C	C	C	C	-	-	-	-	-	-
F2000	Basket, Wastepaper, Round, Metal	1	C	C	C	C	-	-	-	-	-	-
F3200	Clock, Battery, 12" Diameter	1	C	C	C	C	-	-	-	-	-	-
K1910	Table, Work, Stainless Steel	1	A	A	A	A	-	-	-	-	-	-
M0013	Basket, Infectious Wast, Step-On	1	C	C	C	C	-	-	-	-	-	-
P2000	Eyewash, Wall Mounted, Hands-Free	1	A	A	A	A	B	-	-	-	-	-
S0960	Washer/Disinfector,STM,2DO,RCSD1WLL,26X24X24 Cham	1	A	C	C	C	F	G	D	A	-	E
S0965	Washer/Disinfector, Dental	1	A	A	A	A	B	C	-	-	-	-

**DNESC4 - DATA/TELEPHONE EQUIPMENT**

JSN	Nomenclature	Qty	AR	Logistics		
				NA	AF	VA
A1014	Telephone, Wall Mounted, 1 Line, with Speaker	1	A	A	A	A

<b>Room Description:</b> Dental, Instrument Decontamination, Medium	<b>NSF:</b> 120	<b>DNESC4</b>	
<b>Plate Description:</b> Equipment & Data Schedules	<b>Scale:</b>	Sheet <b>5</b>	of <b>6</b>



<b>Room Description:</b> Dental, Instrument Decontamination, Medium	<b>NSF:</b> 120	<b>DNSC4</b>	
<b>Plate Description:</b> Flow Diagram	<b>Scale:</b> 3/16" = 1'-0"	Sheet <b>6</b>	of <b>6</b>