

* SEE EXTERIOR WALL CHAPTER
 ** PANNING TURNED UP ON VIEW
 SEALANT TO BRICK BEYOND

END DAM IN
 HEAD JOINT
 BRICK VENEER *

NOTE: FOR
 VENEERS
 INSTALLED
 AFTER CURTAIN
 WALL AIR+VAPOR
 BARRIER MEMBRANE
 CAN GO OVER
 THE BACKER
 ROD AND
 STRAIGHT INTO
 THE GLAZING
 POCKET

FIRST COURSE
 FACE BRICK
 OPEN HEAD
 JOINT WEEPS
 2 1/4" OC MAX *

LIP STRETCHER *
 BRICK
 SEALANT

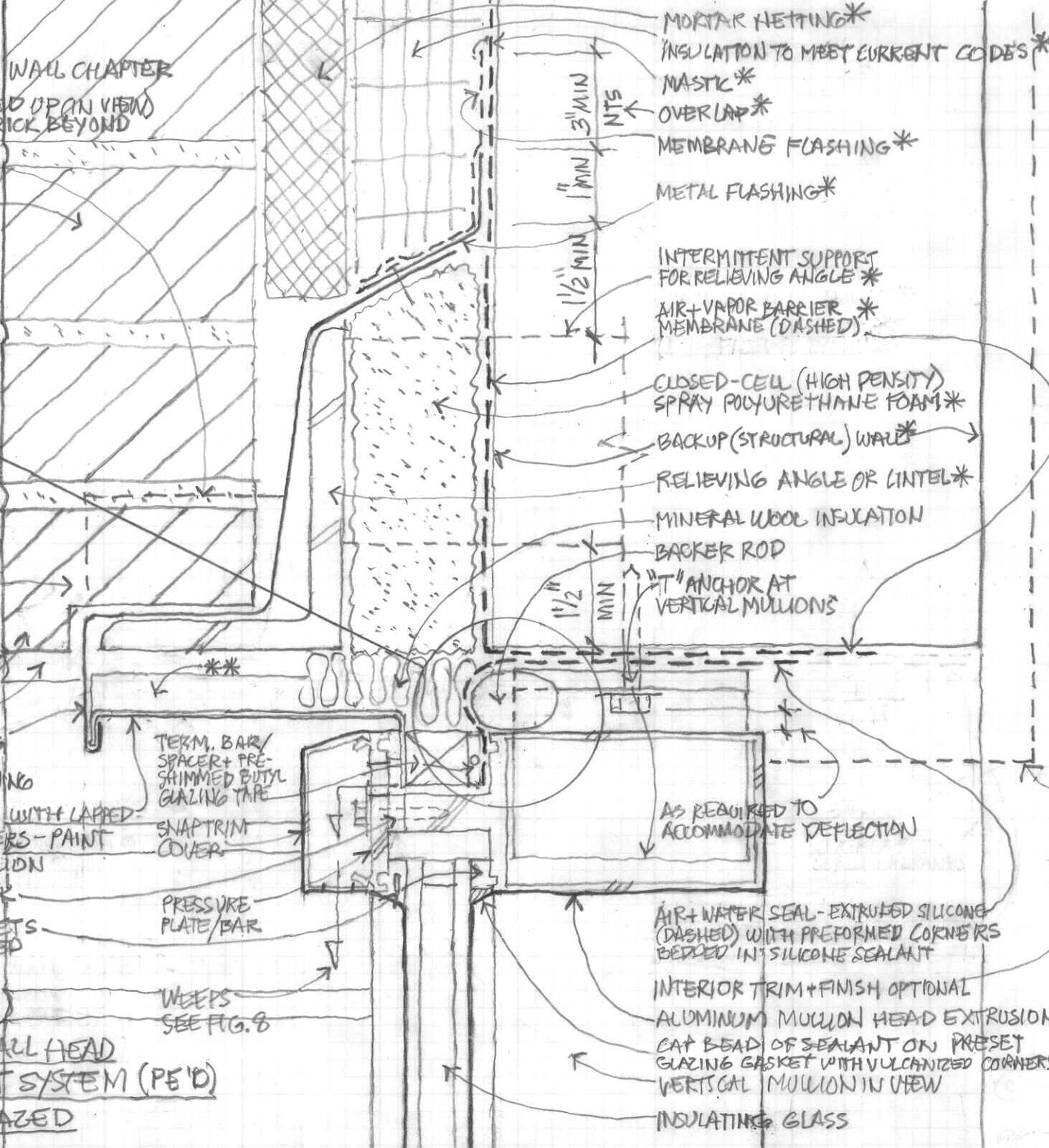
METAL FLASHING
 PAINT TO MATCH
 MULLION + PANNING
 METAL PANNING WITH LAPPED
 + SEALED CORNERS - PAINT
 TO MATCH MULLION

THERMAL BREAK
 GLAZING GASKETS
 WITH VULCANIZED
 CORNERS

FIGURE S-2
 CURTAIN WALL HEAD
 STICK-BUILT SYSTEM (PE'D)
 OUTSIDE GLAZED

WEEPS
 SEE FIG. 8

MORTAR HETTING *
 INSULATION TO MEET CURRENT CODE'S *
 MASTIC *
 OVERLAP *
 MEMBRANE FLASHING *
 METAL FLASHING *
 INTERMITTENT SUPPORT
 FOR RELIEVING ANGLE *
 AIR+VAPOR BARRIER *
 MEMBRANE (DASHED)
 CLOSED-CELL (HIGH DENSITY)
 SPRAY POLYURETHANE FOAM *
 BACKUP (STRUCTURAL) WALL *
 RELIEVING ANGLE OR LINTEL *
 MINERAL WOOL INSULATION
 BACKER ROD
 1/2" ANCHOR AT
 VERTICAL MULLIONS
 AS REQUIRED TO
 ACCOMMODATE DEFLECTION
 AIR+WATER SEAL - EXTRUDED SILICONE
 (DASHED) WITH PREFORMED CORNERS
 BEDDED IN SILICONE SEALANT
 INTERIOR TRIM + FINISH OPTIONAL
 ALUMINUM MULLION HEAD EXTRUSION
 CAP BEAD OF SEALANT ON PRESET
 GLAZING GASKET WITH VULCANIZED CORNERS
 VERTICAL MULLION IN VIEW
 INSULATING GLASS



* SEE EXTERIOR WALL CHAPTER
 ** PANNING TURNED UP ON VIEW
 SEALANT TO BRICK BEYOND

END DAM IN
 HEAD JOINT
 BRICK VENEER

NOTE: FOR
 VENEERS
 INSTALLED
 AFTER CURTAIN
 WALL, AIR+VAPOR
 BARRIER MEMBRANE
 CAN GO OVER
 THE BACKER
 ROD AND
 STRAIGHT INTO
 THE GLAZING
 POCKET

FIRST COURSE
 FACE BRICK
 OPEN HEAD
 JOINT WEEPS
 24" OC MAX *

LIP STRETCHER *
 BRICK
 SEALANT

METAL FLASHING
 PAINT TO MATCH
 MULLION + PANNING
 METAL PANNING WITH LAPPED
 + SEALED CORNERS - PAINT
 TO MATCH MULLION

THERMAL BREAK
 GLAZING GASKETS
 WITH VULCANIZED
 CORNERS

FIGURE S-2C
 CURTAIN WALL HEAD
 STICK-BUILT SYSTEM (PE'D)
 OUTSIDE GLAZED

THERMAL
 BARRIER
 (YELLOW)
 RAINSCREEN

WATER
 BARRIER

TERM. BAR/
 SPACER + PRE-
 SHIMMED BUTYL
 GLAZING TAPE
 SNAPTRIM
 COVER

PRESSURE
 PLATE/BAR

WEEPS
 SEE FIG. 8

MORTAR SETTING *
 INSULATION TO MEET CURRENT CODES *
 MASTIC *
 OVERLAP *
 MEMBRANE FLASHING *
VAPOR BARRIER
 METAL FLASHING *

AIR BARRIER

INTERMITTENT SUPPORT
 FOR RELIEVING ANGLE *
 AIR+VAPOR BARRIER *
 MEMBRANE (DASHED)
 (FOIL-FACED AT OPENING)

CLOSED-CELL (HIGH DENSITY)
 SPRAY POLYURETHANE FOAM *
 BACKUP (STRUCTURAL) WALL *

RELIEVING ANGLE OR LINTEL *

MINERAL WOOL INSULATION

BACKER ROD

1/2" ANCHOR AT
 VERTICAL MULLIONS

AS REQUIRED TO
 ACCOMMODATE DEFLECTION

AIR+ WATER SEAL - EXTRUDED SILICONE
 (DASHED) WITH PREFORMED CORNERS
 BEDDED IN SILICONE SEALANT

INTERIOR TRIM + FINISH OPTIONAL
 ALUMINUM MULLION HEAD EXTRUSION
 CAP BEAD OF SEALANT ON PRESET
 GLAZING GASKET WITH VULCANIZED CORNERS
 VERTICAL MULLION IN VIEW
 INSULATING GLASS

