

3/4" HOT GALVANIZED COUNTER-POISE CONNECTING GROUND RODS. THIS COUNTER-POISE TO BE BURIED A MIN OF 15" BELOW FINISHED GRADE.

NOTE
CIRCLES FOR SHELL AND GUTTER ARE DRAWN UP INTO 16 SEGMENTS OF 22'30" EACH

CONNECT GROUND RODS WITH 3/4" HOT GALVANIZED COUNTER-POISE

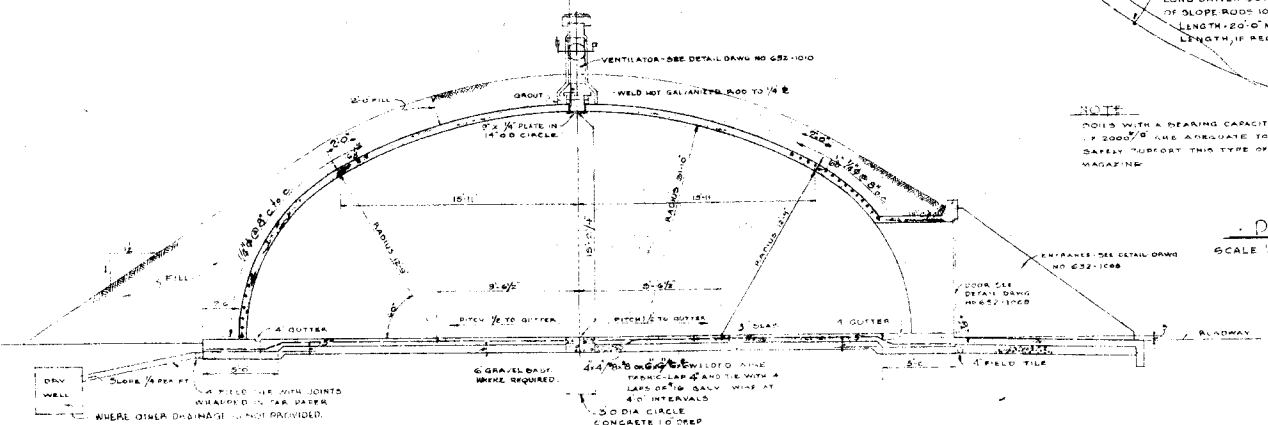
3/4" HOT GALVANIZED ROD 10'-0" LONG DRIVEN OUTSIDE TOE OF SLOPE RODS 10'-0" MIN LENGTH - 20'-0" MAX LENGTH IF REQUIRED

NOTE
DOHS WITH A BEARING CAPACITY OF 2000 LBS PER SQ FT ARE APPROPRIATE TO SAFELY SUPPORT THIS TYPE OF MAGAZINE

APPROXIMATE TOE OF SLOPE

FOR SECTION A-A SEE DRAWING NO. 652-1000

DETAIL OF TABLE LEGS APPROVED



SECTION ON CENTER LINE
SCALE 1/2" = 1'-0"

NOTE
RADIUS SHOWN ARE TO RIDS OF SHELL AND NOT TO CHORDS OF SEGMENTS

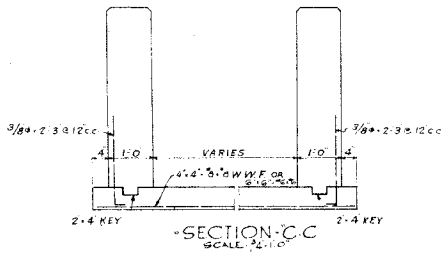
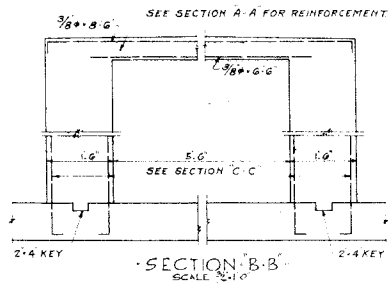
PLAN

SCALE 1/4" = 1'-0"

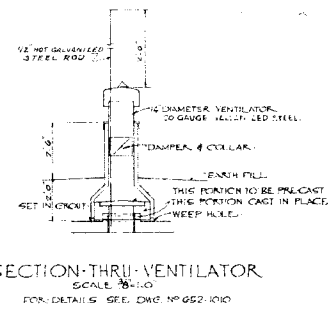
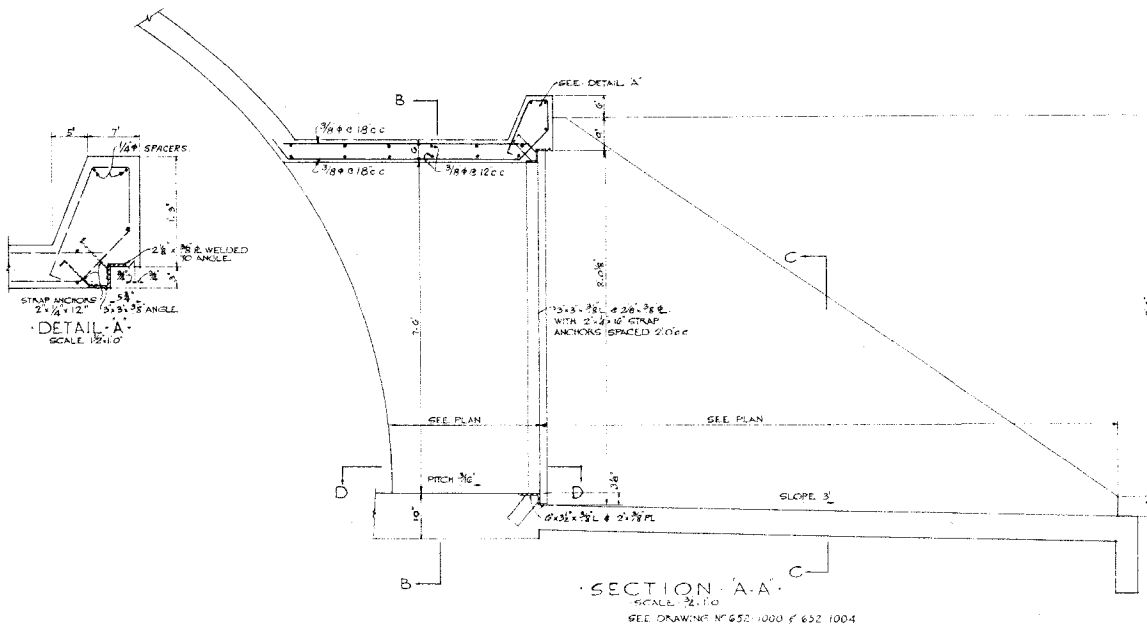
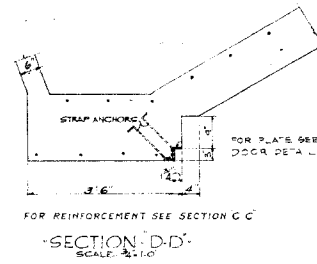
APPROVED BY INDUSTRIAL SERVICE
 J.R. [Signature]
 BRIG. GENERAL, ENGINEERING OFFICE, USA
 APPROVED BY PLANT SECURITY DIVISION
 [Signature]
 CIVIL ENGINEER, OFFICE 754
 DRAWING NO. 652-1000
 APPROVED FOR THE CHIEF OF BATTERY
 [Signature]
 CAPTAIN, USA

CHECKED ARCH. STRUCT. ELECT. PLS. HEAT. CIVIL ENGR.		WAR DEPARTMENT OFFICE OF THE CHIEF OF ENGINEERS-CONSTRUCTION DIVISION WASHINGTON, D. C.	
MAGAZINE		UNDERGROUND MAGAZINE 44'-7" CORBETTA BEE HIVE TYPE SECT. ON ϕ OF ENTRANCE & SECTIONAL PLAN AT BOTTOM	
REVISIONS NO. DATE BY	SHEET OF SHEETS	APPROVAL RECOMMENDED	APPROVED
DRAWN BY CHECKED BY DATE	TRACED BY DATE	APPROVED FOR THE CHIEF OF BATTERY DATE	DRAWING NUMBER 652-1004 8-1004

THIS DRAWING AND SIGNATURE TO LIFE OF THE CLOCK WERE TRACED FROM THE PAGES 652-1004

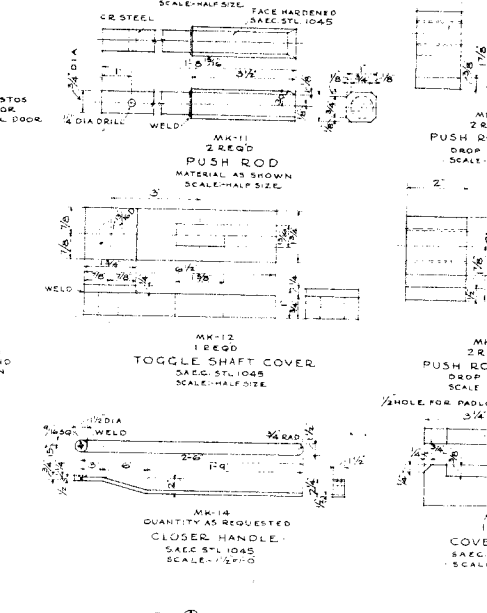
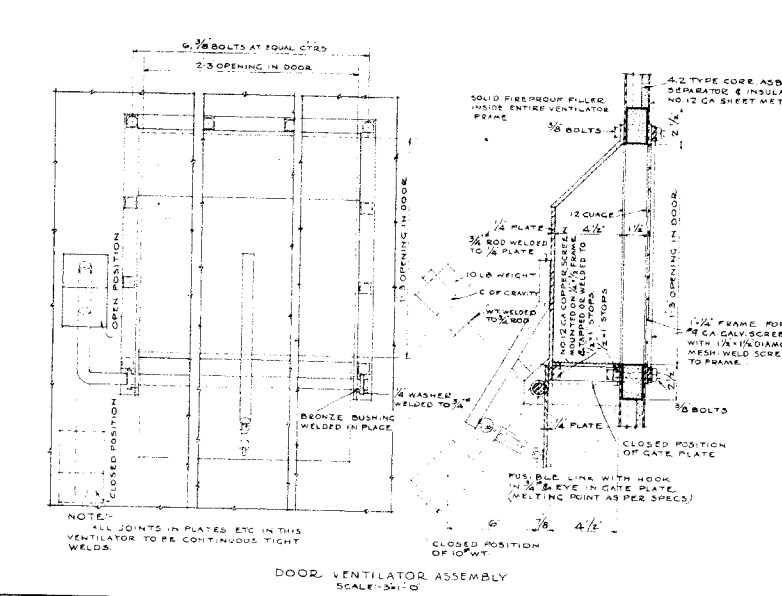
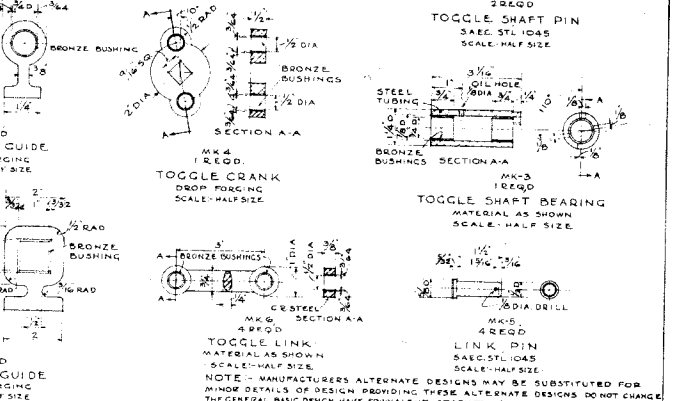
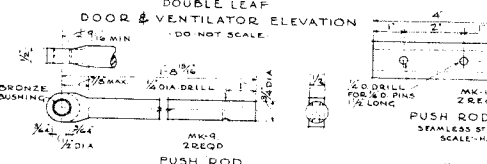
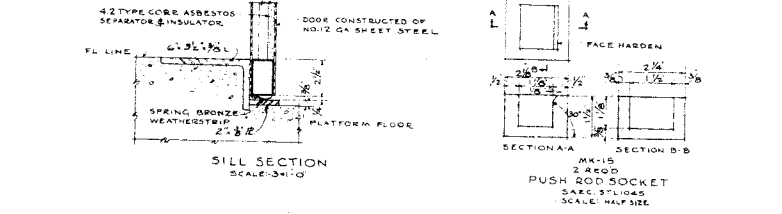
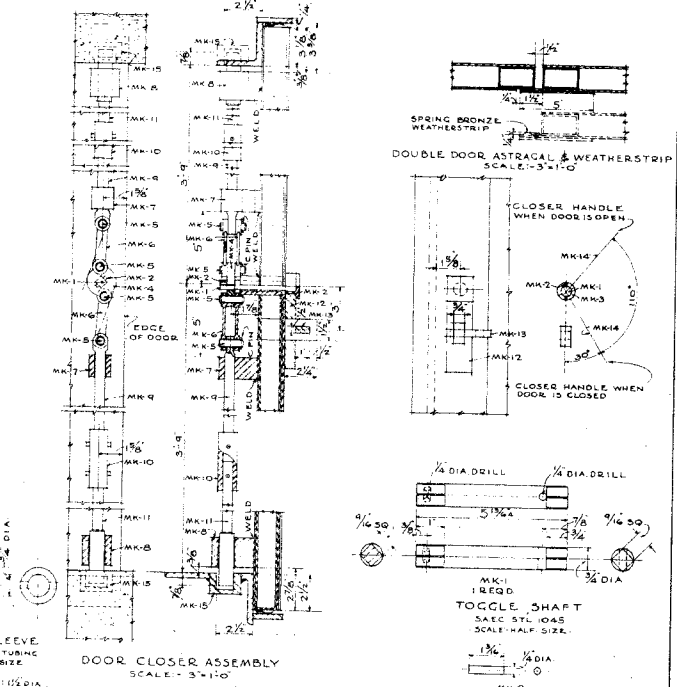
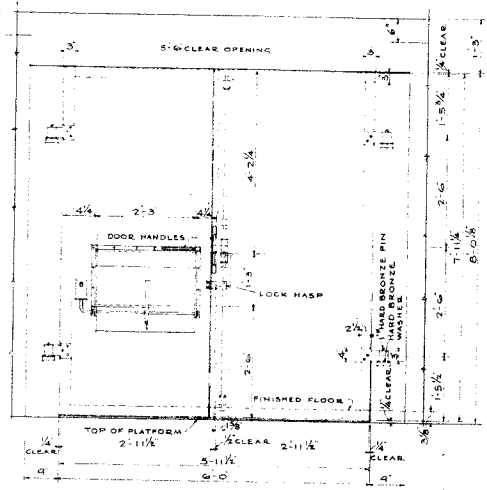
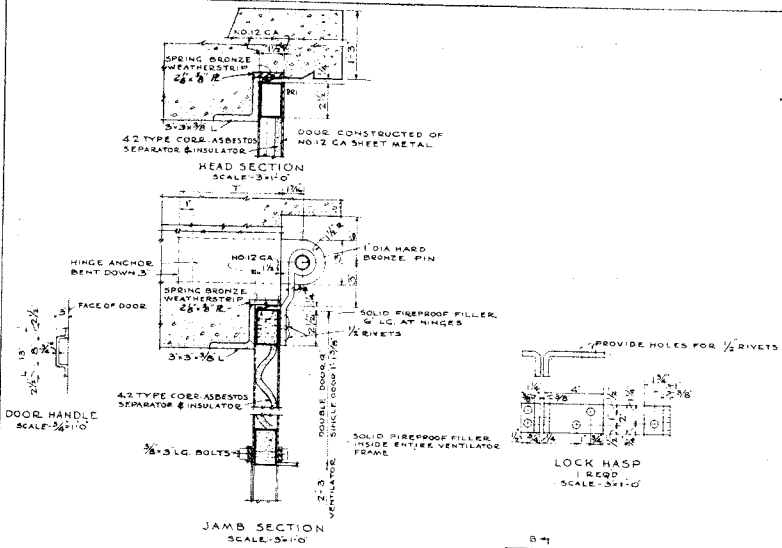


ALL MESH REINFORCING IN SLAB UNDER MAIN DOME AND ENTRANCE TO BE 4'-4" x 3" OR 4'-6" x 3'-6" WITH 1" LAPPED @



REVISION F: COND. INSUL. REMOVAL
 REVISION E: SINS THICKNESS AND LIGHTNING PROTECTION CHANGED
 REVISION A: DRAFTING INCONSISTENCIES CORRECTED REVISION D CHANGED DRAWING
 REVISION B & C: REVISED ENTRANCE & OTHER DETAILS 1" x 2" TO 1" x 6" x 1000 & 652-1004

APPROVED BY INDUSTRIAL SERVICE <i>[Signature]</i>	CHECKED A.C.M. J.T.H.L.C. P.L.S. M.E.H. J.T.L.E.N.G.R.	WAR DEPARTMENT OFFICE OF THE CHIEF OF ENGINEERS CONSTRUCTION DIVISION WASHINGTON, D. C.
BY GENERAL ORDINANCE DEPT. USA APPROVED BY PLANT CLOSURE DIV. U.S. <i>[Signature]</i>	REVISIONS BY DATE BY ① 4/23/42 J.P.C. ② 5/23/42 J.P.C. ③ 1/23/43 J.P.C. ④ 1/23/43 J.P.C.	UNDERGROUND MAGAZINE 52'-0" x 44'-7" CORBETTA BEE HIVE TYPE DETAIL OF ENTRANCE AND VENTILATOR
GENERAL ORDINANCE DEPT. USA MAGAZINE	APPROVED FOR THE CHIEF OF ENGINEERS <i>[Signature]</i>	SHEET OF SHEETS APPROVAL RECOMMENDED APPROVED <i>[Signature]</i>
APPROVED BY THE CHIEF OF ENGINEERS <i>[Signature]</i>	APPROVED FOR DATE	SCALE AS SHOWN MARCH 23, 1942 OFFICE FILE NO DRAWING NUMBER 652-1008



SUBMITTED <i>H. L. Jones</i> MAJOR, ORDNANCE DEPT USA EXAMINED <i>Commodore</i> LT COL, ORDNANCE DEPT USA APPROVED BY ORDER OF CHIEF OF STAFF <i>James</i> COLONEL, ORDNANCE DEPT USA APPROVED BY PLANT SECURITY DIVISION <i>W. J. ...</i> COLONEL, ORDNANCE DEPT USA APPROVED BY INDUSTRIAL SERVICE <i>George R. ...</i> MAJOR, ORDNANCE DEPT USA		CHECKED ARCH. STRUCT. ELECT. PLS. MEAT. CIVIL ENGR.	WAR DEPARTMENT OFFICE OF THE CHIEF OF ENGINEERS' CONSTRUCTION DIVISION WASHINGTON, D. C. UNDERGROUND MAGAZINE DETAILS OF STEEL DOORS
SHEET OF SHEETS APPROVAL RECOMMENDED <i>[Signature]</i> CHIEF OF ENGR'G SEC'T DRAWN VET'IC.		APPROVED FOR DATE	SCALE: AS SHOWN APPROVED <i>[Signature]</i> CHIEF OF ENGR'G SEC'T DATE MARCH 23, 1942 OFFICE FILE NO.
REVISED DATE APPROVED FOR DATE		DRAWING NUMBER 652-1009	

REV A DRAFTING INCONSISTENCIES CORRECTED.