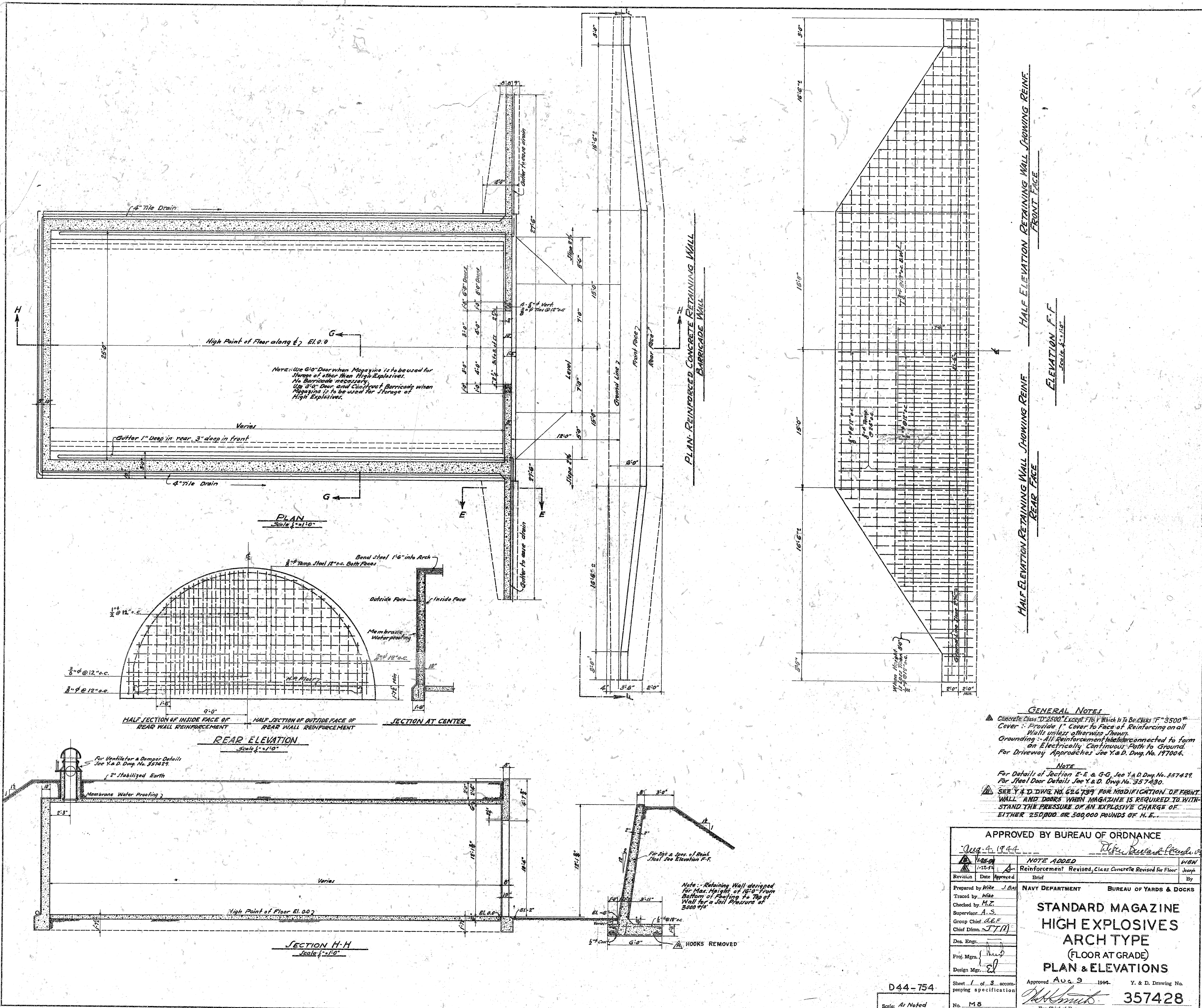


700 WILSON BOULEVARD  
ARLINGTON VIRGINIA



**GENERAL NOTES**

Concrete Class "D" 2500\* Except F16 F Which is to be Class "F" 3500\*  
 Cover: Provide 1" Cover to Face of Reinforcing on all  
 Walls unless otherwise shown.  
 Grounding: All Reinforcement is to be connected to form  
 an Electrically Continuous Path to Ground.  
 For Driveway Approaches See Y. & D. Dwg. No. 197006.

**NOTE**

For Detail of Section E-E & G-G, See Y. & D. Dwg. No. 357422.  
 For Steel Door Details See Y. & D. Dwg. No. 357430.

SEE Y. & D. DWG. NO. 626797 FOR MODIFICATION OF FRONT  
 WALL AND DOORS WHEN MAGAZINE IS REQUIRED TO WITH-  
 STAND THE PRESSURE OF AN EXPLOSIVE CHARGE OF  
 EITHER 250,000 OR 500,000 POUNDS OF H.E.

APPROVED BY BUREAU OF ORDNANCE		Date: Aug. 9, 1944	
Revised	Date	By	Initials
1-22-44			
NOTE ADDED: Reinforcement Revised, Class Concrete Revised for Floor			
Prepared by: Mike J. B.		BUREAU OF YARDS & DOCKS	
Traced by: Mike		STANDARD MAGAZINE	
Checked by: M.Z.		HIGH EXPLOSIVES	
Supervisor: A.S.		ARCH TYPE	
Group Chief: A.E.F.		(FLOOR AT GRADE)	
Chief Draftsman: J.T.D.		PLAN & ELEVATIONS	
Des. Engr.:		Approved: A. G. G. 1944	
Proj. Mgr.:		Y. & D. Drawing No.	
Design Mgr.:		357428	
Sheet 1 of 3 accompanying specification		For Chief of Bureau	
Scale: As Noted		No. M8	

D44-754

1-32-231

875256  
143

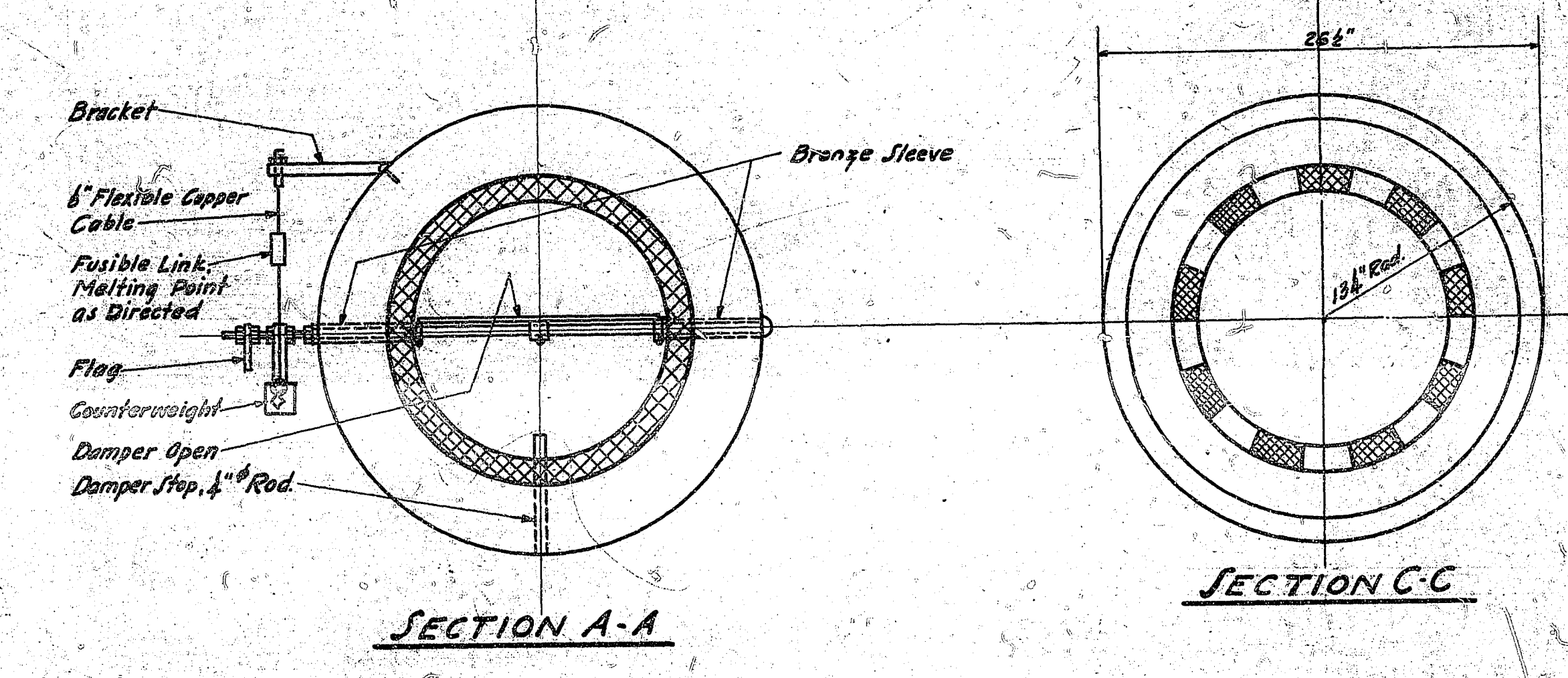
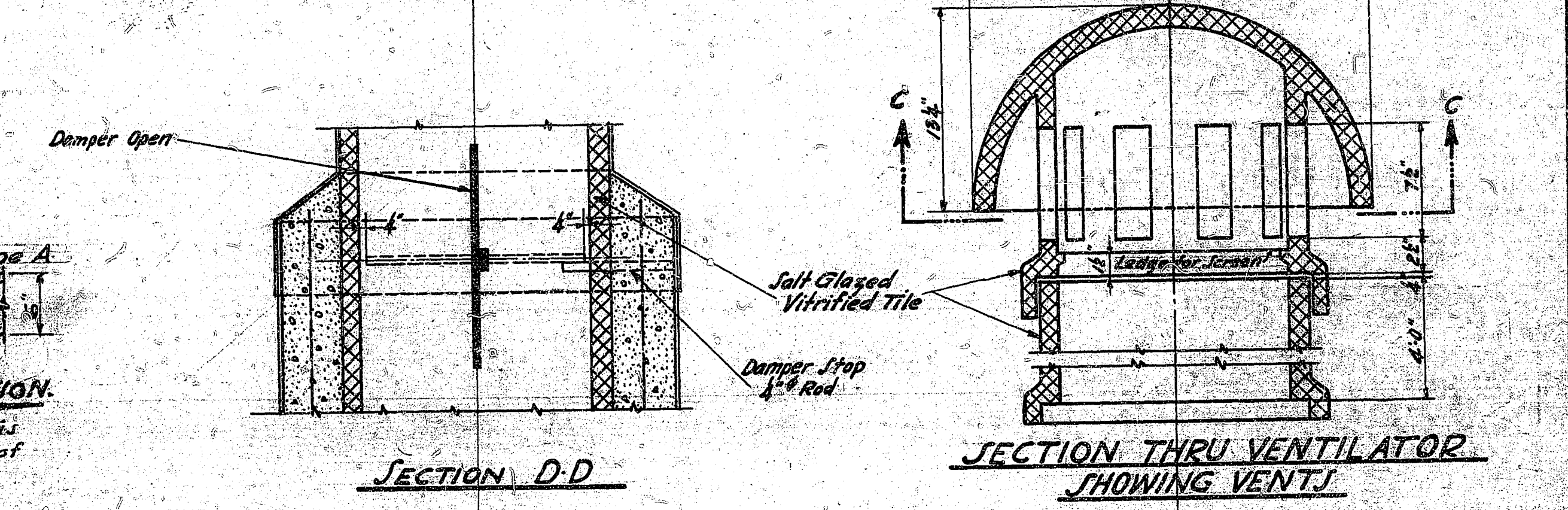
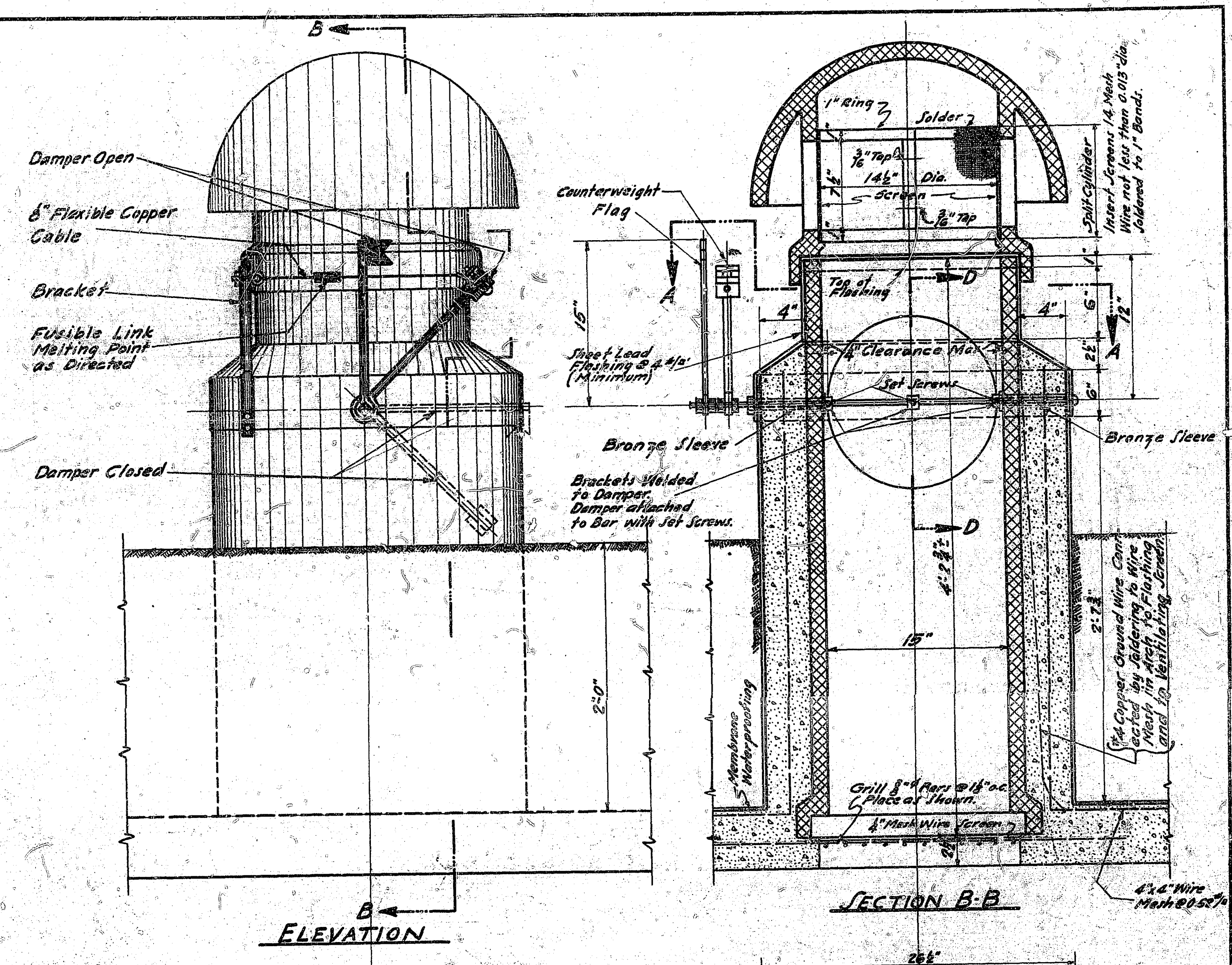
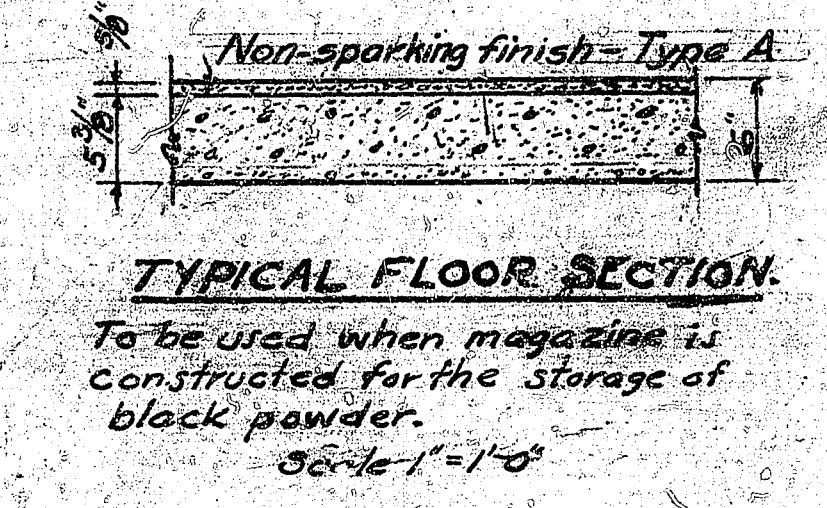
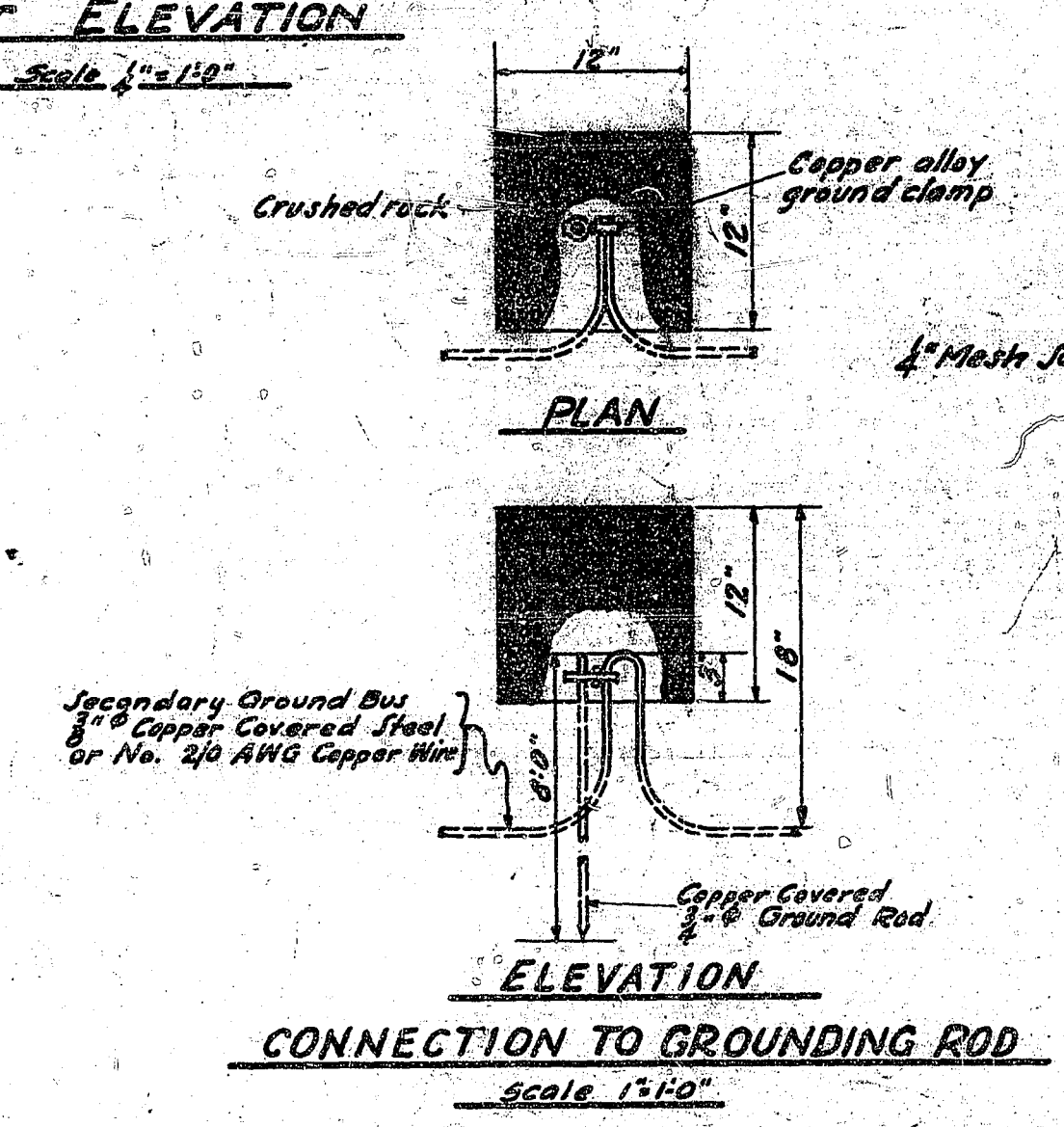
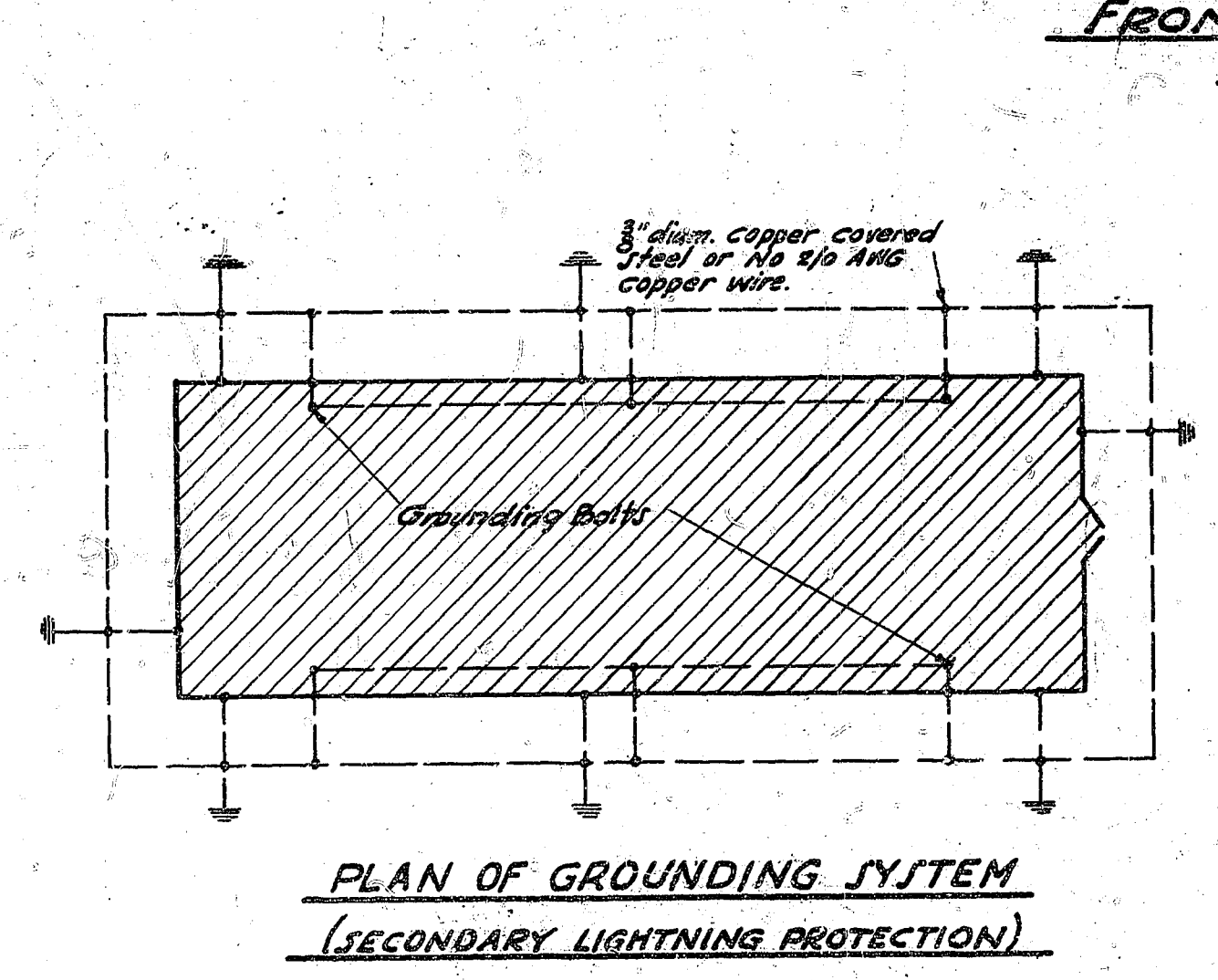
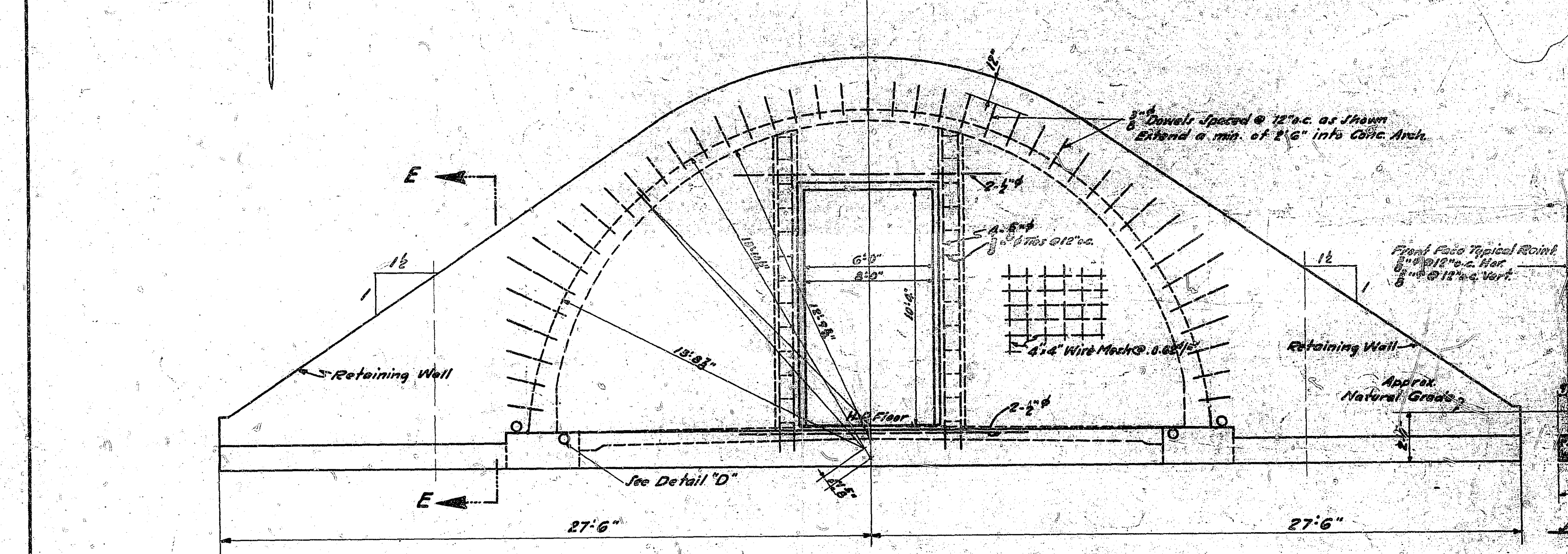
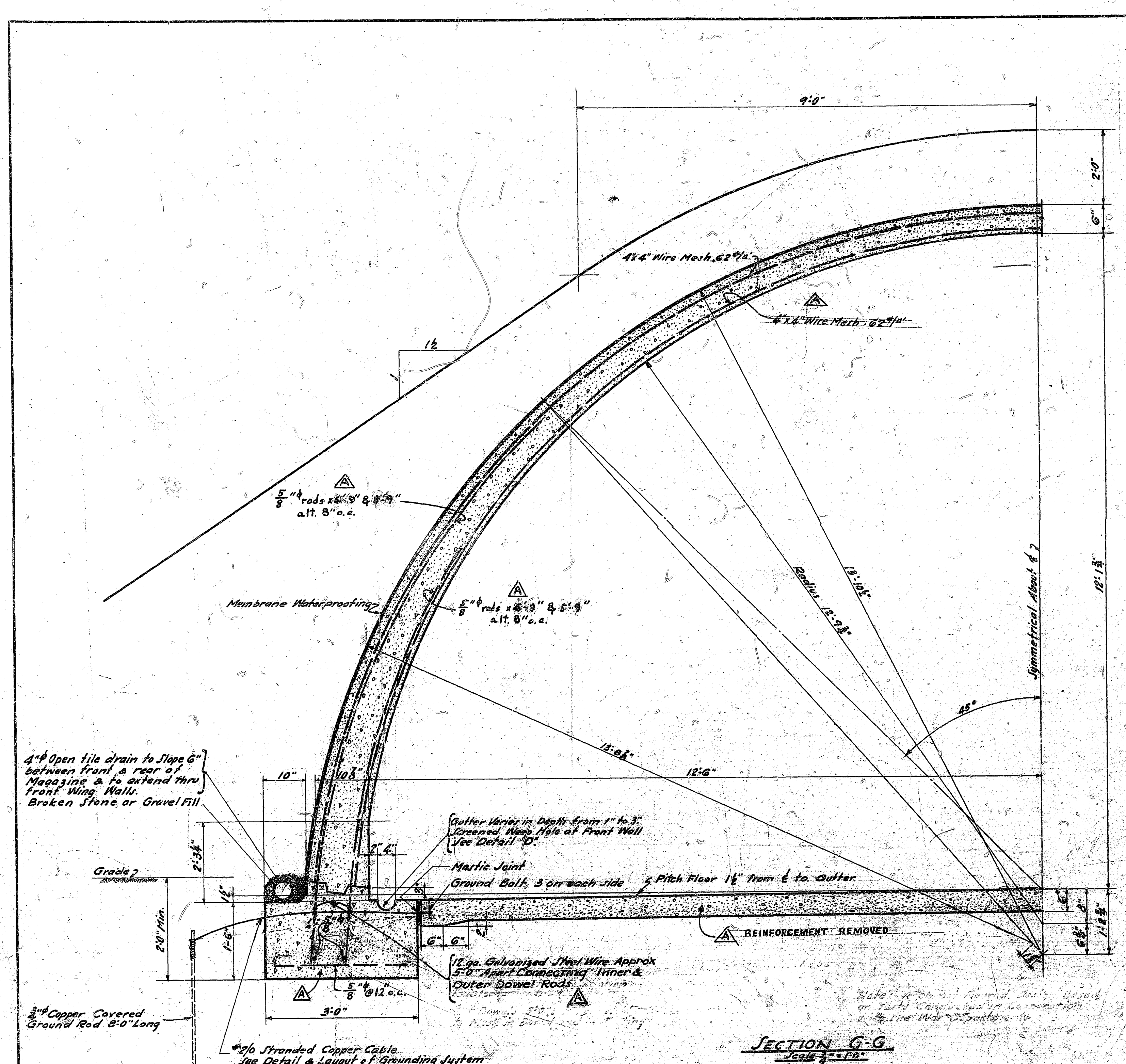
Y.D. 1-7  
 LOT # 6  
 Roll # 152

AUGUST 1959

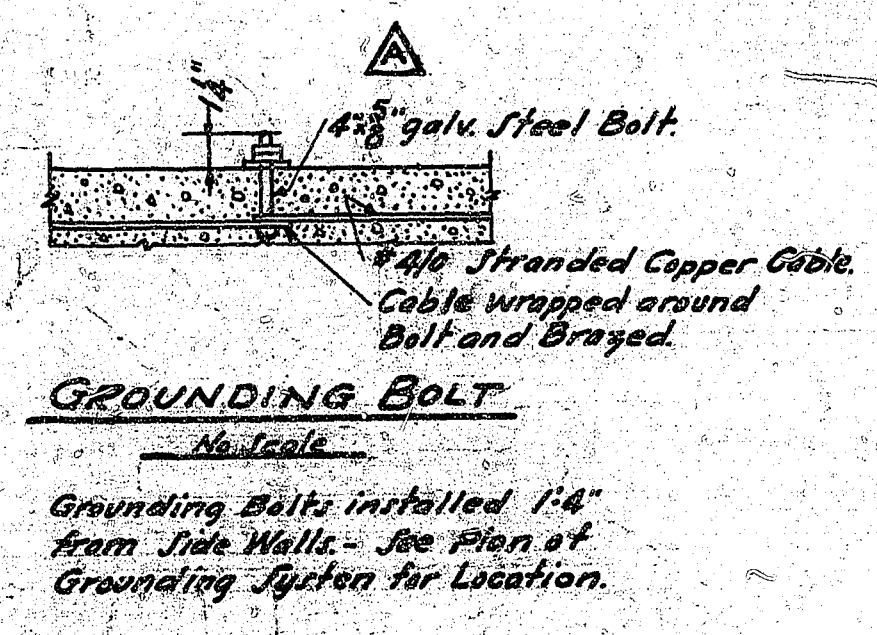
105 mm

**COOPER-TRENT**  
 BLUEPRINT AND MICROFILM CORPORATION  
 270 WILSON BOULEVARD  
 ARLINGTON, VIRGINIA

82



**VENTILATOR DAMPER DETAILS**  
 Scale 8"=0'1"



**NOTE**  
 For General Notes See Y. & D. Dwg. No. 357428.  
 For Steel Door Details See Y. & D. Dwg. No. 357430.  
 For Plan & Elevations See Y. & D. Dwg. No. 357428.  
 For Location of Section G-G, See Y. & D. Dwg. No. 357428.

APPROVED BY BUREAU OF ORDNANCE			
Aug 4, 1944		W. H. Smith, Chief Clerk	
Revision	Date	Approved	By
1		Reinforcement Revised, Ground Connection Revised	W. H. Smith
Prepared by: M. E. J. A. S.			
Checked by: A. S.			
Supervisor: A. S.			
Group Chief: M. E. J. A. S.			
Chief Designer: J. T. B.			
Des. Engr.:			
Proj. Mgr.:			
Design Mgr.:			
Sheet 2 of 3 accompanying specification			
Approved: AUG 9 1944		Y. & D. Drawing No. 357429	
W. H. Smith		For Chief of Bureau	
No. M.B.			

Scale: As Noted  
 1-32-232

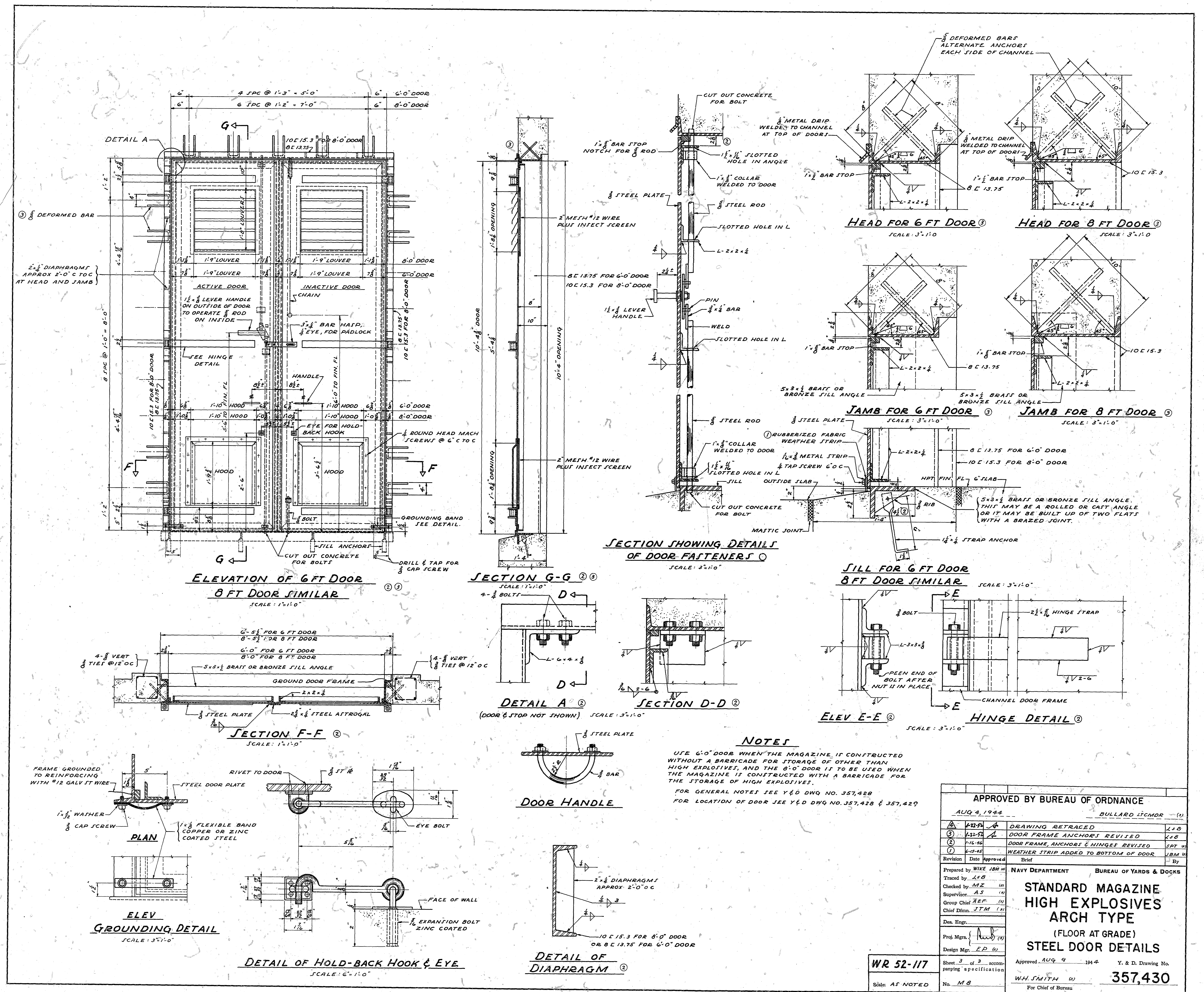
357429  
 2013

Y.D. 1-7  
 LOT # 6  
 Roll # 152

8X  
 105 mm  
 AUGUST 1959

MICRO-MASTER  
 COOPER-TRENT  
 BLUEPRINT AND MICROFILM CORPORATION  
 2701 WILSON BOULEVARD  
 ARLINGTON, VIRGINIA

76

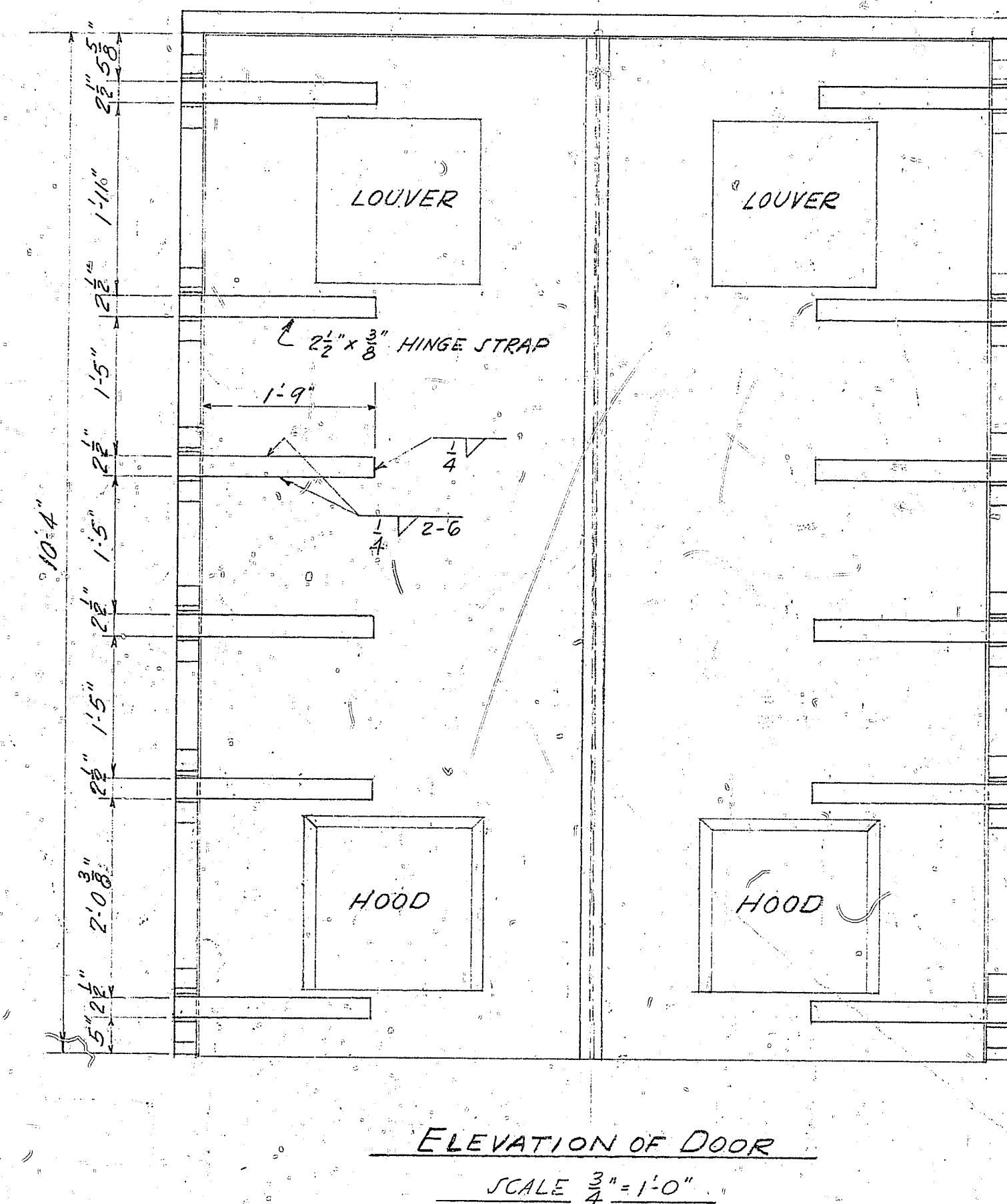
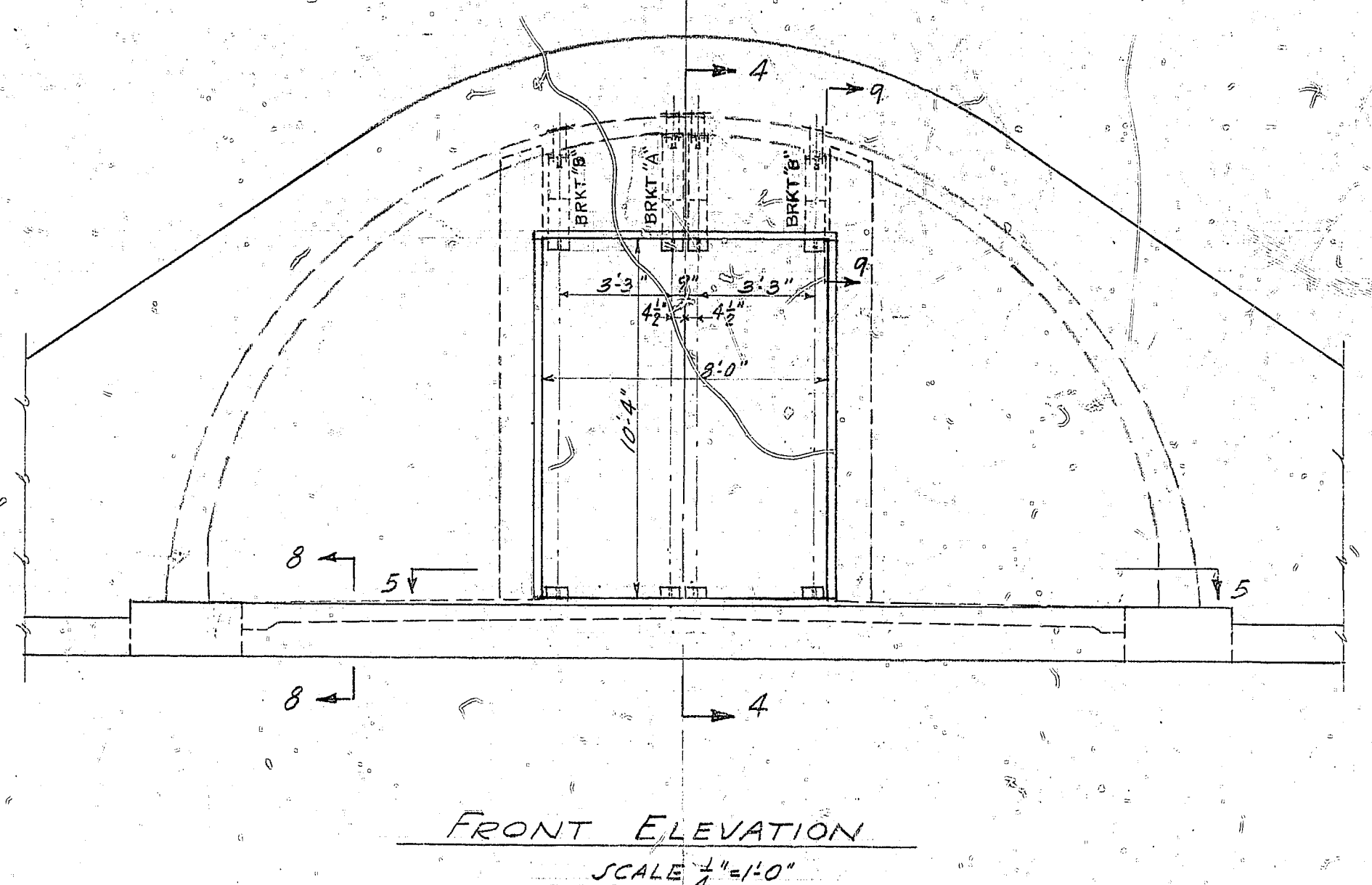
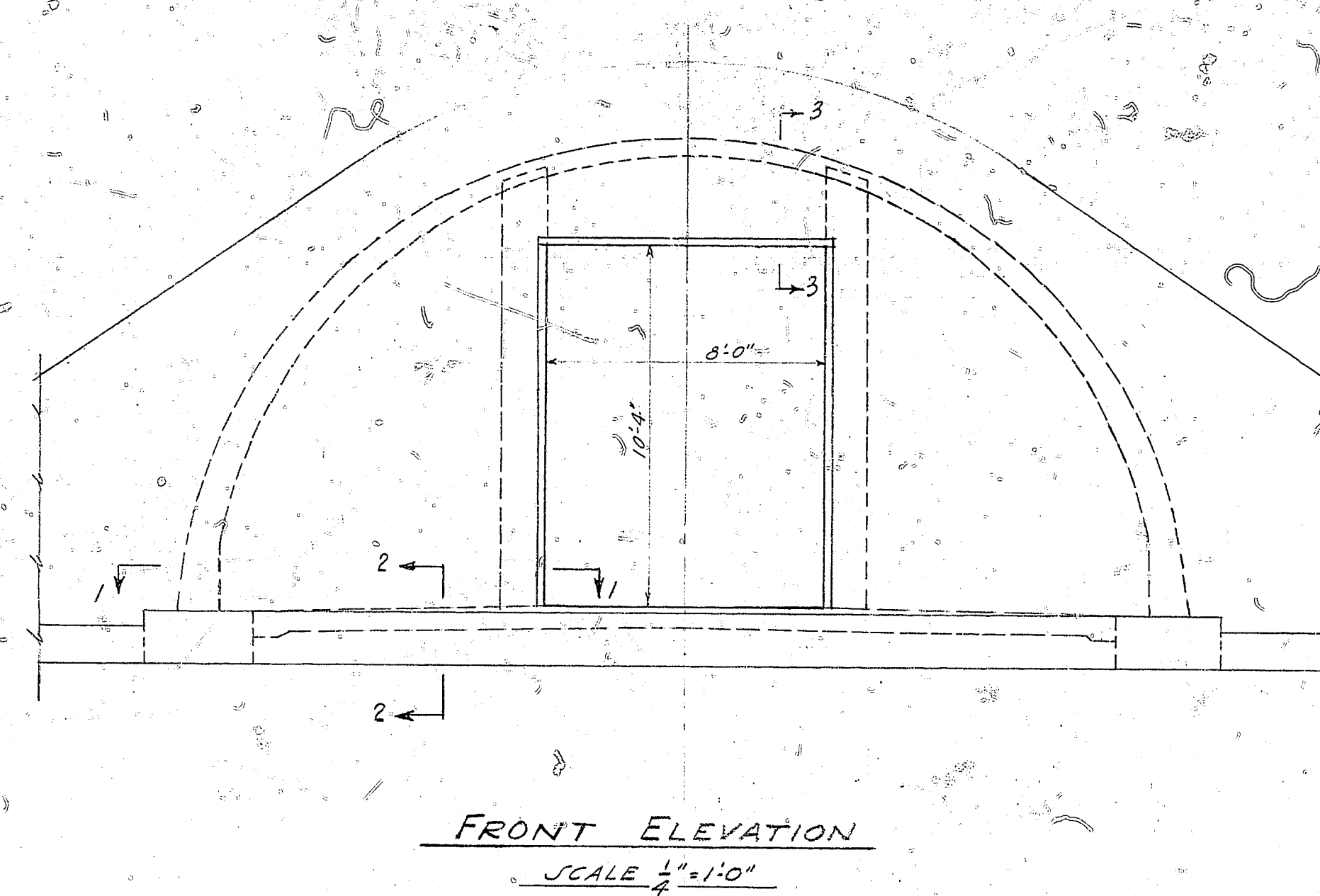


**NOTES**  
 USE 6'-0" DOOR WHEN THE MAGAZINE IS CONSTRUCTED WITHOUT A BARRICADE FOR STORAGE OF OTHER THAN HIGH EXPLOSIVES, AND THE 8'-0" DOOR IS TO BE USED WHEN THE MAGAZINE IS CONSTRUCTED WITH A BARRICADE FOR THE STORAGE OF HIGH EXPLOSIVES.  
 FOR GENERAL NOTES SEE Y&D DWG NO. 357,428  
 FOR LOCATION OF DOOR SEE Y&D DWG NO. 357,428 & 357,429

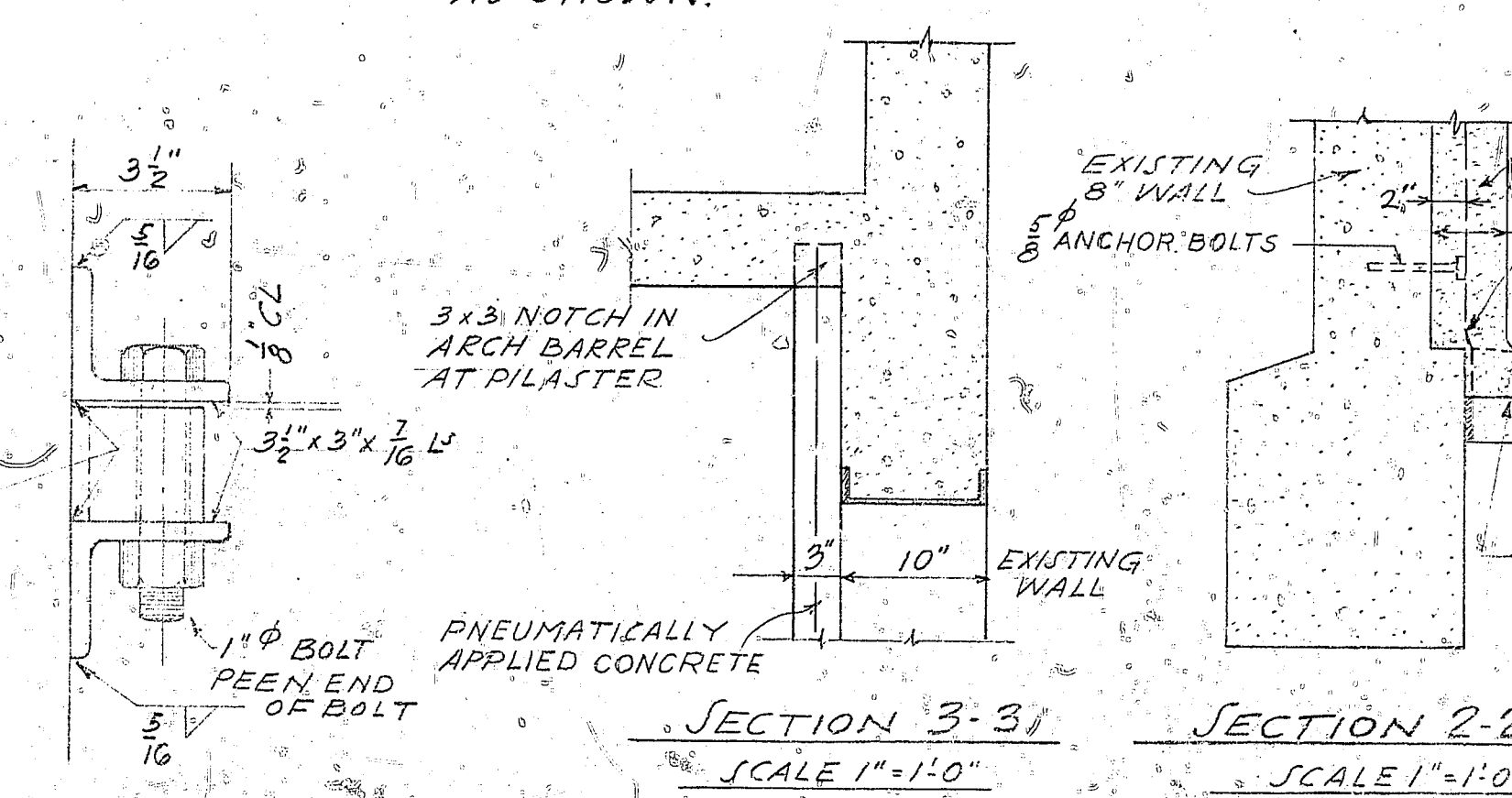
APPROVED BY BUREAU OF ORDNANCE	
AUG 4, 1944	BULLARD (TCMR) (S)
① 1/21-54	DRAWING RETRACED
② 1/16-54	DOOR FRAME ANCHORS REVISED
③ 1/16-54	DOOR FRAME ANCHORS & HINGES REVISED
④ 2-15-45	WEATHER STRIP ADDED TO BOTTOM OF DOOR
Revision	Date Approved
Prepared by WIKI JSM (S)	NAVY DEPARTMENT
Traced by LEB	BUREAU OF YARDS & DOCKS
Checked by MZ (S)	
Supervisor AS (S)	
Group Chief REP (S)	
Chief Draftsman JTM (S)	
Des. Engr.	
Proj. Mgr. (S)	
Design Mgr. REP (S)	
STANDARD MAGAZINE HIGH EXPLOSIVES ARCH TYPE (FLOOR AT GRADE) STEEL DOOR DETAILS	
Approved AUG 9 1944	Y. & D. Drawing No.
W.H. SMITH (S)	357,430
For Chief of Bureau	
WR 52-117	Scale: AS NOTED
No. MB	

357430  
 343

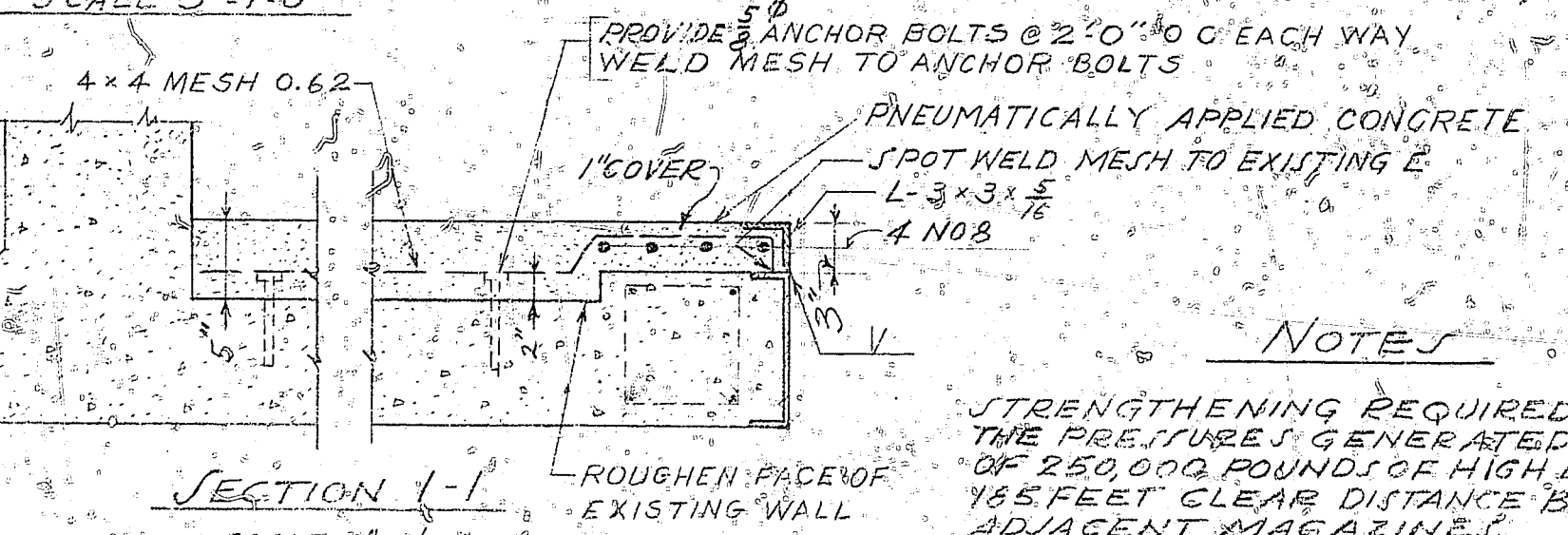
MICRO-MASTER 105 mm 6x JAN MAY SP



NOTE: REMOVE EXISTING HINGE STRAPS, HINGES & ANGLE SUPPORTS & REPLACE WITH HINGES AS SHOWN.

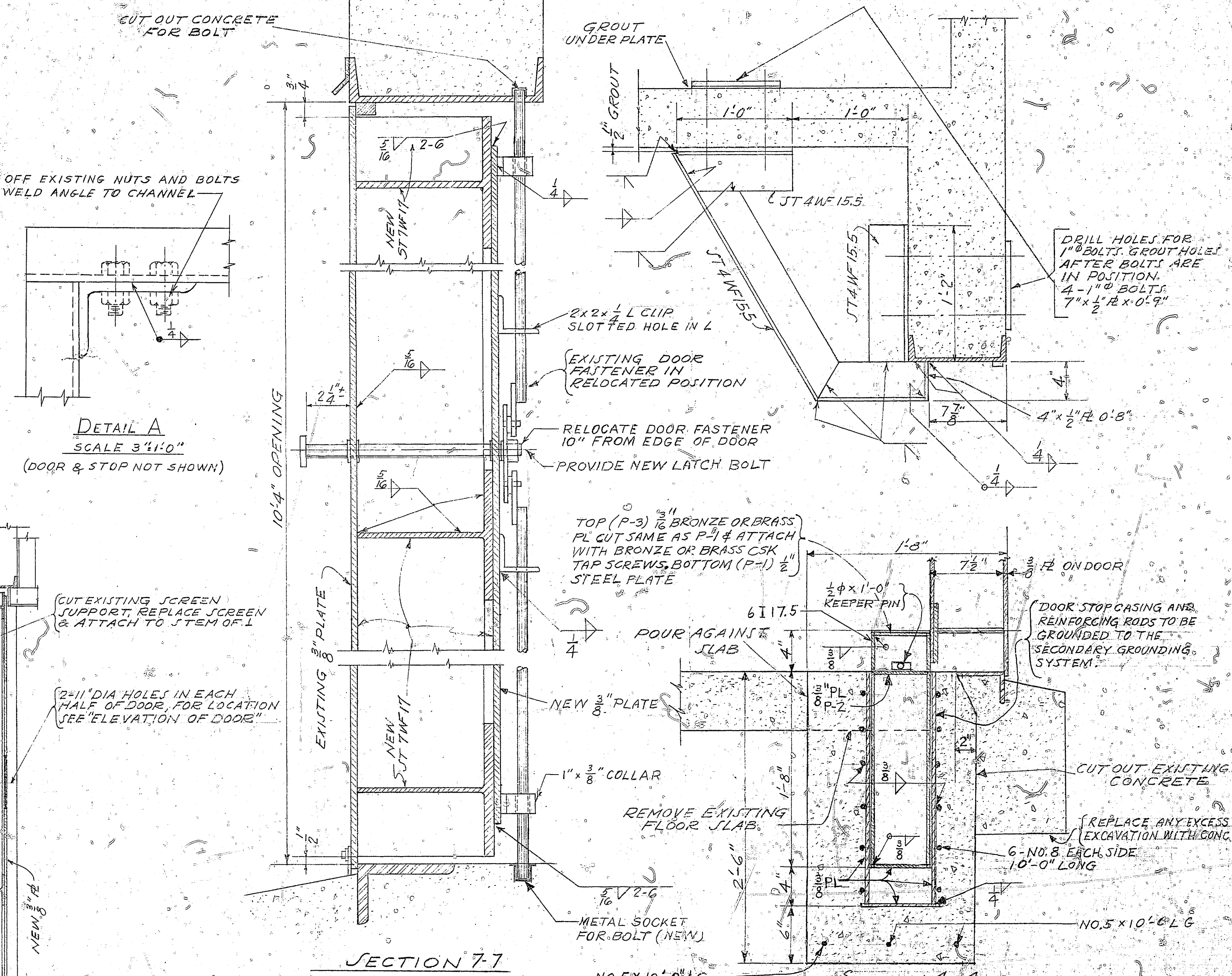
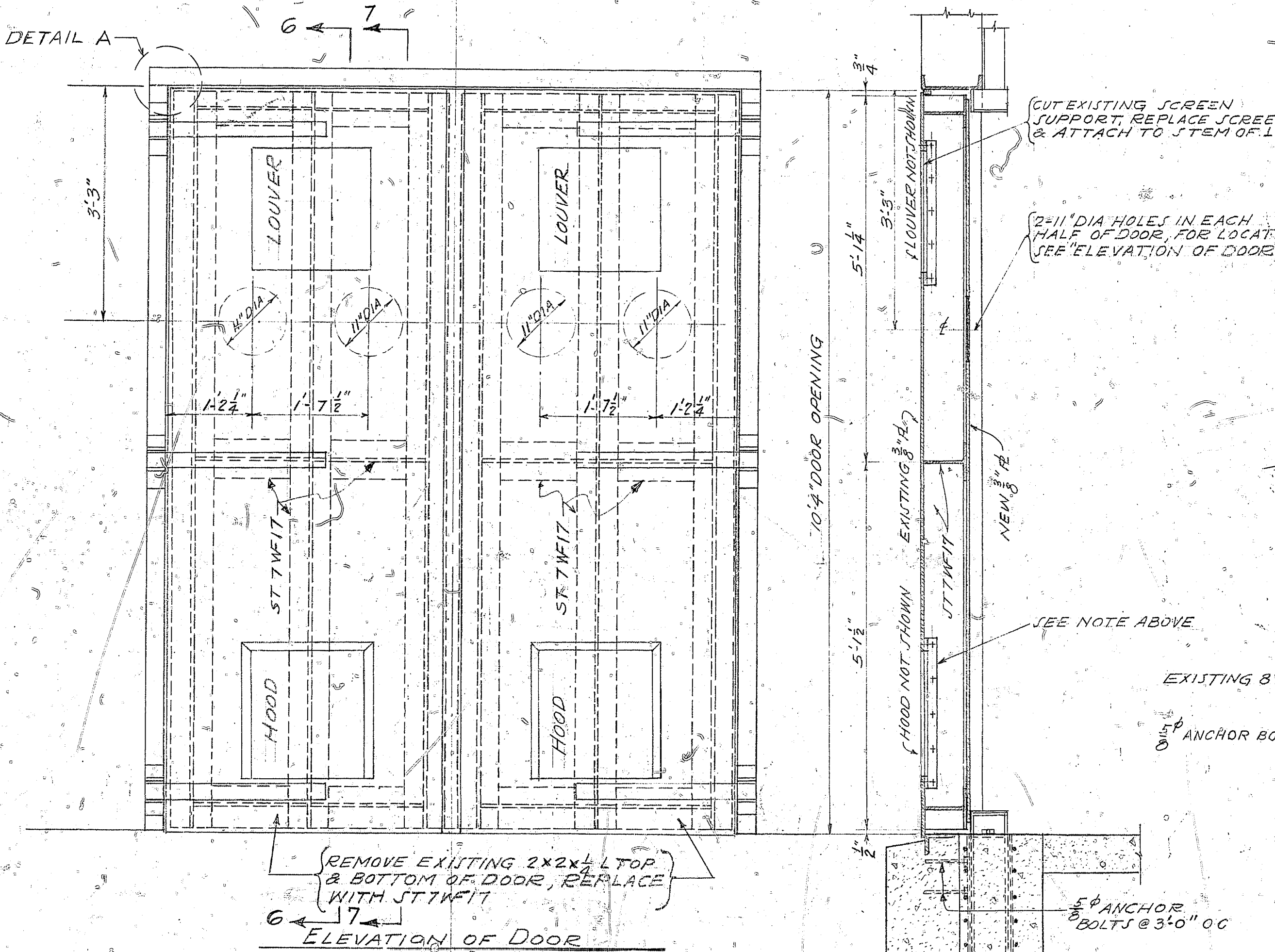


HINGE DETAIL  
SCALE 3/4" = 1'-0"



NOTE: NO. 8 BOLTS TO EXTEND INTO NOTCHES TOP & BOTTOM.

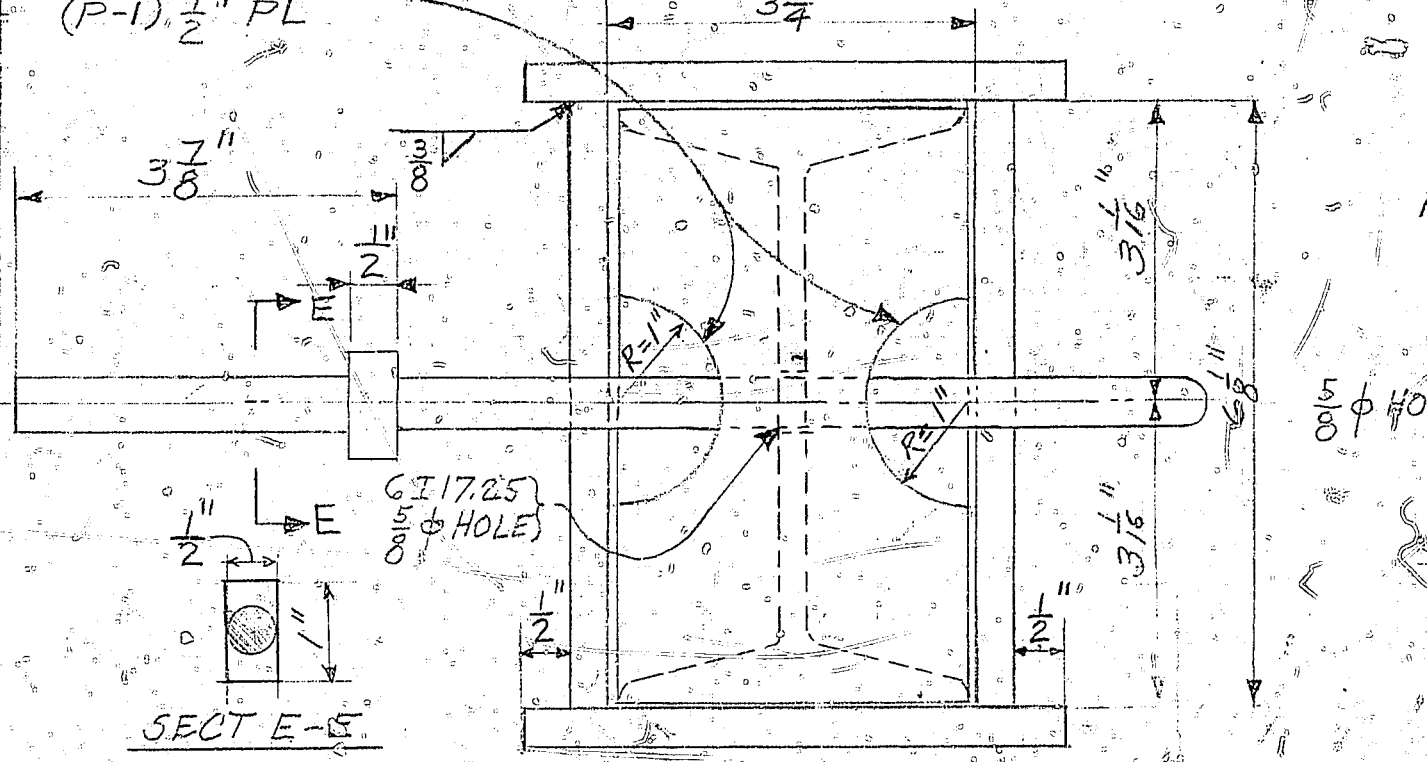
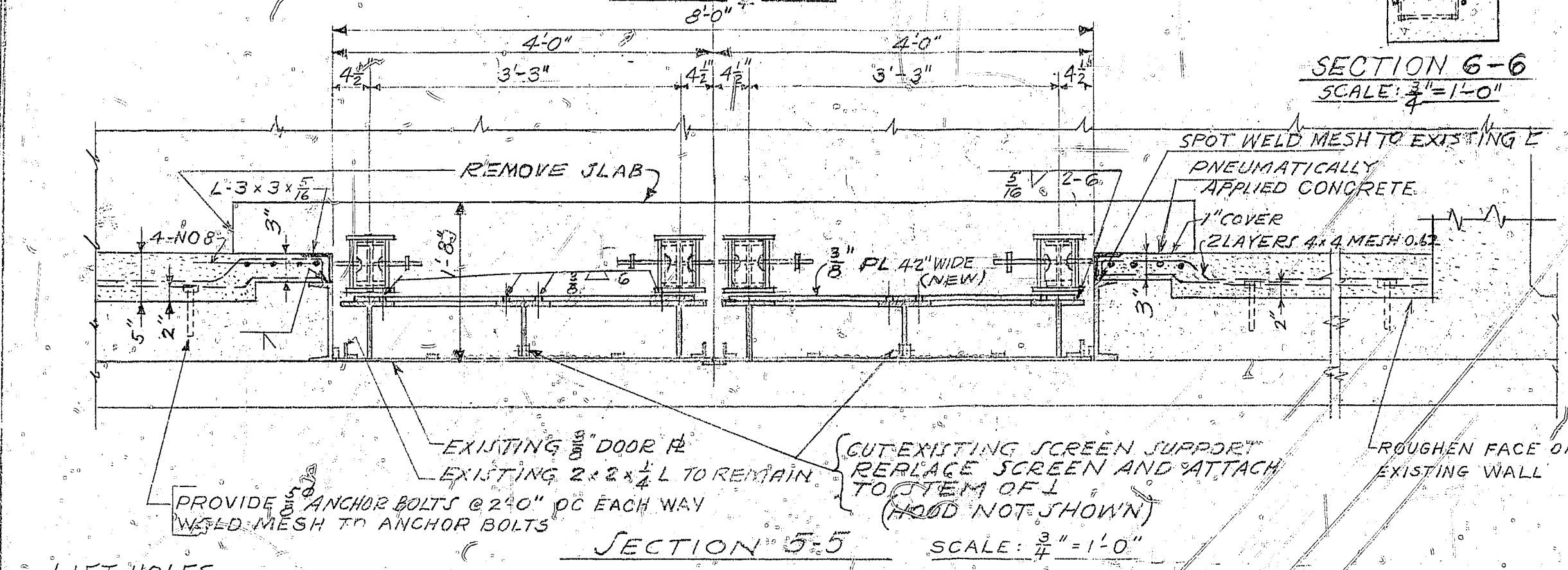
STRENGTHENING REQUIRED TO WITHSTAND THE PRESSURE GENERATED BY THE EXPLOSION OF 250,000 POUNDS OF HIGH EXPLOSIVE AT 145 FEET CLEAR DISTANCE BETWEEN ADJACENT MAGAZINES.



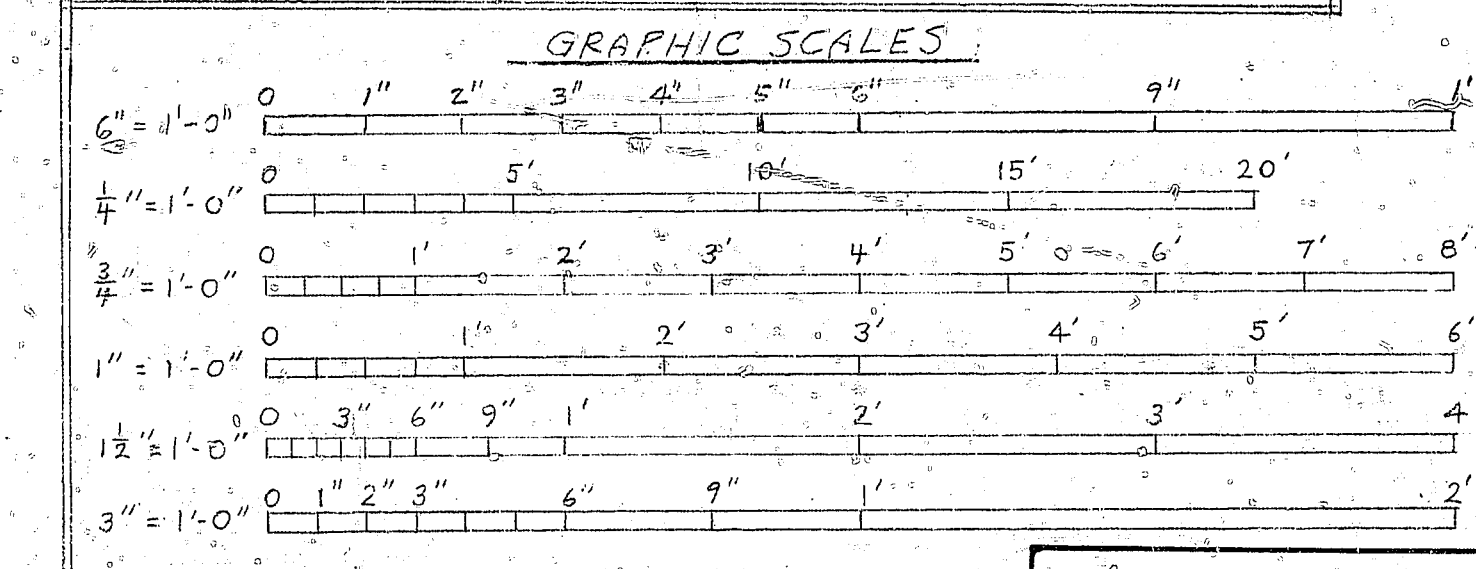
SECTION 8-8  
SCALE 1" = 1'-0"

SECTION 9-9  
SCALE 1" = 1'-0"

DOOR STOP - LOWERED POSITION  
SCALE 1/2" = 1'-0"



DETAIL OF PLATE P-2  
SCALE 6" = 1'-0"



NOTE: STRENGTHENING REQUIRED TO WITHSTAND THE PRESSURE GENERATED BY THE EXPLOSION OF 500,000 POUNDS OF HIGH EXPLOSIVE AT 185 FEET DISTANCE BETWEEN ADJACENT MAGAZINES.

GENERAL NOTE

THIS DRAWING SHOWS THE STRENGTHENING DETAILS OF DOORS AND FRONT WALL OF STANDARD HIGH EXPLOSIVE MAGAZINES SHOWN ON YAD DRAWINGS NO. 357428, 357429, & 357430 FOR CONDITIONS NOTED.

THIS MODIFICATION APPLIES TO 8'-0" DOORS OF EXISTING HIGH EXPLOSIVE MAGAZINES.

3" = 4000 PSI FOR PNEUMATICALLY APPLIED CONCRETE. ALL OTHER CONCRETE = 2500 PSI

SYMBOL		DESCRIPTION	DATE	APPROVAL
REVISIONS				
DEPARTMENT OF THE NAVY WASHINGTON, D.C.				
<b>BUREAU OF YARDS &amp; DOCKS</b>				
DES. MIKE	DRWN. MIKE			
CHK. KEITH	LDR. MORAN			
SUPV. HOBBS	HEAD. SEECK			
WR. P-2	ENGR. CONN. E.D.			
PROJ. MGMT. JEFF				
APPROVED: [Signature]			DATE: 3/19/54	
DIRECTOR: [Signature]			FOR CHIEF OF BUREAU	
SATISFACTORY TO BUREAU OF ORDNANCE			SCALE AS NOTED	SPEC.
SHEET 1 OF 1			NOV.	
YAD DRAWING NO. 626739				

WR 53-166

1-32-408