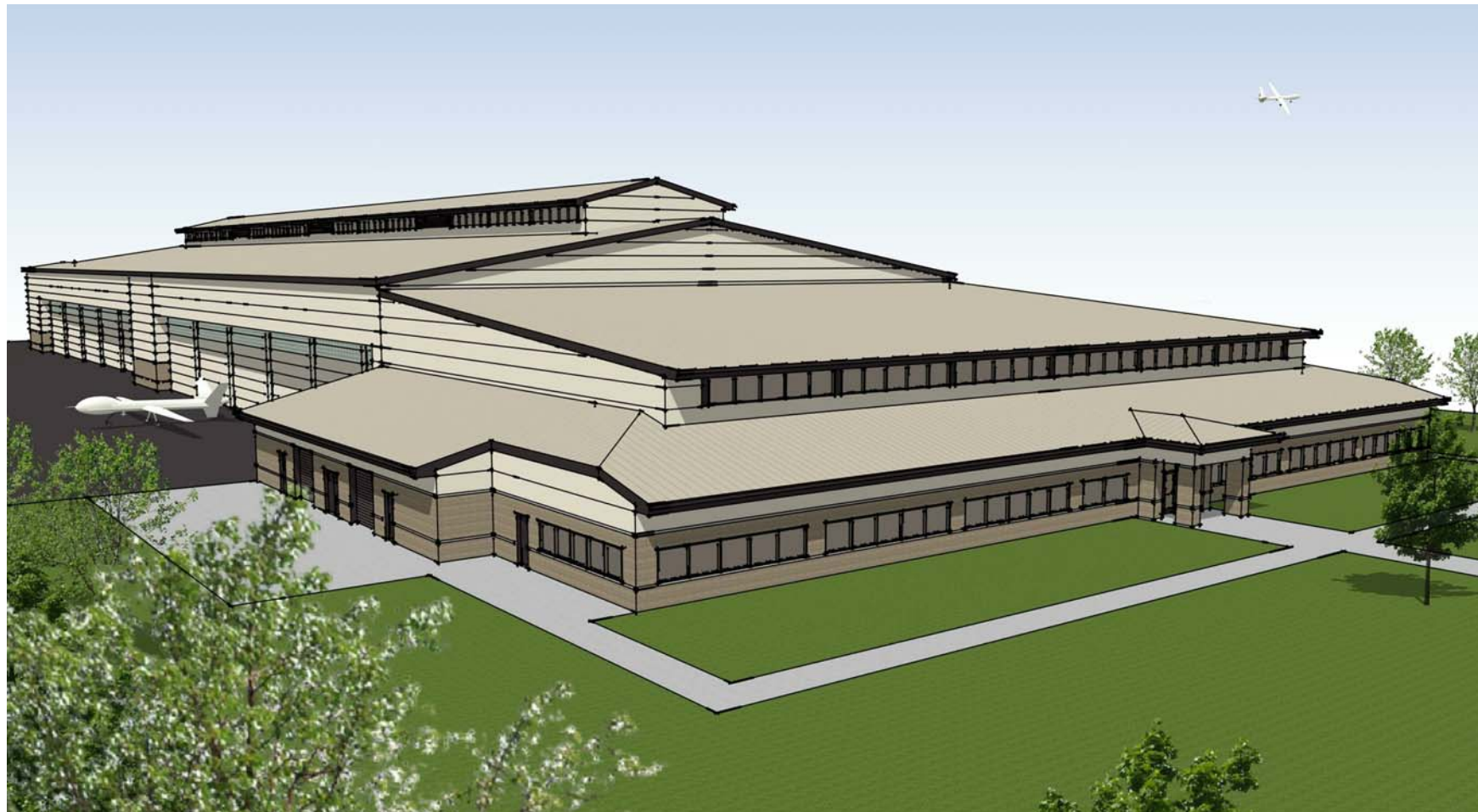


# AIR FORCE CIVIL ENGINEER CENTER DYNAMIC PROTOTYPE DEVELOPMENT RPA GENERAL MAINTENANCE HANGAR

FINAL  
OCTOBER 2018



NOTIONAL MASSING

DRAWING LIST	
NUMBER	NAME
C-1	COVER SHEET
A-1	MODULES
A-2	MODULES
A-3	MODULES
A-4	MODULES
A-5	MODULES
A-6	MODULES
A-7	PROOF OF CONCEPT 1 (POC 1)
A-8	PROOF OF CONCEPT 2 (POC 2)

### GENERAL NOTES

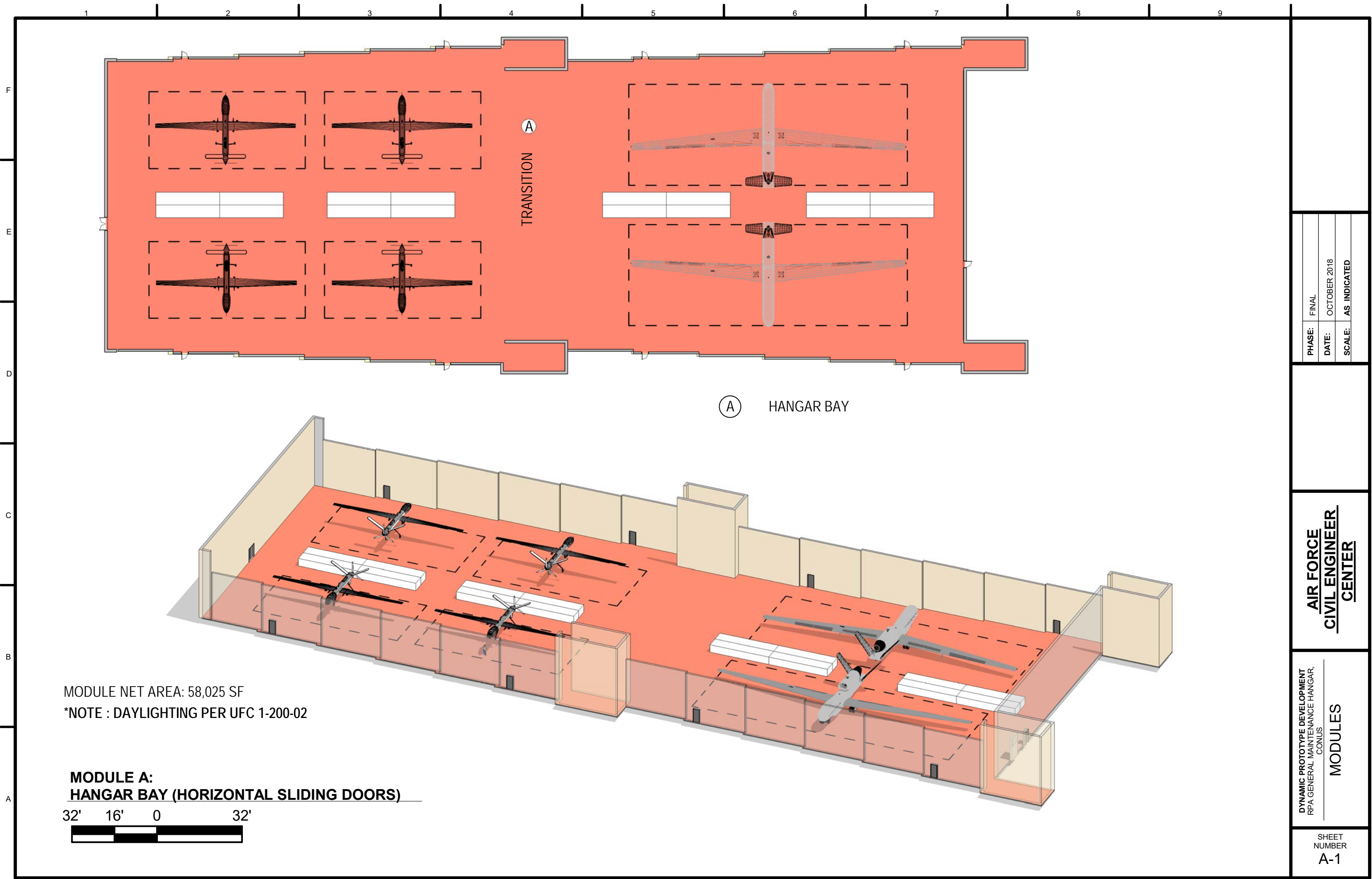
1. USE THESE DOCUMENTS IN CONJUNCTION WITH THE DESIGN CRITERIA, SUPPLEMENTAL RFP AND PROGRAMING SHEET.

PHASE: FINAL  
DATE: OCTOBER 2018  
SCALE: AS INDICATED

AIR FORCE  
CIVIL ENGINEER  
CENTER

DYNAMIC PROTOTYPE DEVELOPMENT  
RPA GENERAL MAINTENANCE HANGAR,  
CONUS  
COVER SHEET

SHEET  
NUMBER  
C-1

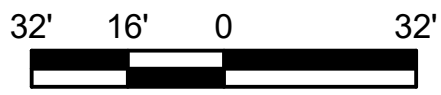


TRANSITION

(A) HANGAR BAY

MODULE NET AREA: 58,025 SF  
 \*NOTE : DAYLIGHTING PER UFC 1-200-02

**MODULE A:  
 HANGAR BAY (HORIZONTAL SLIDING DOORS)**



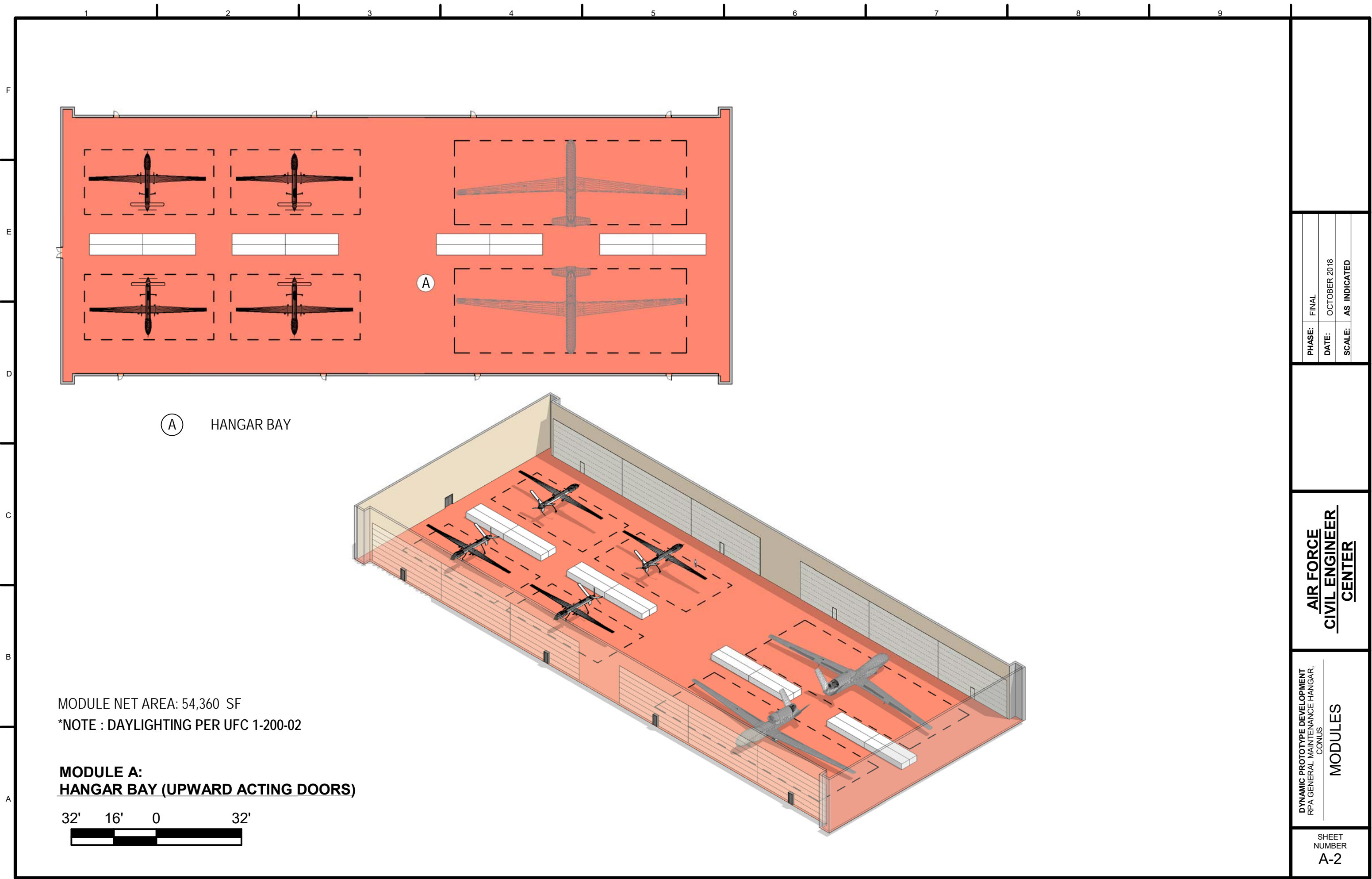
PHASE:	FINAL
DATE:	OCTOBER 2018
SCALE:	AS INDICATED

**AIR FORCE  
 CIVIL ENGINEER  
 CENTER**

DYNAMIC PROTOTYPE DEVELOPMENT  
 RPA GENERAL MAINTENANCE HANGAR,  
 CONUS  
**MODULES**

SHEET  
 NUMBER  
**A-1**





(A) HANGAR BAY

MODULE NET AREA: 54,360 SF  
 \*NOTE : DAYLIGHTING PER UFC 1-200-02

**MODULE A:  
 HANGAR BAY (UPWARD ACTING DOORS)**

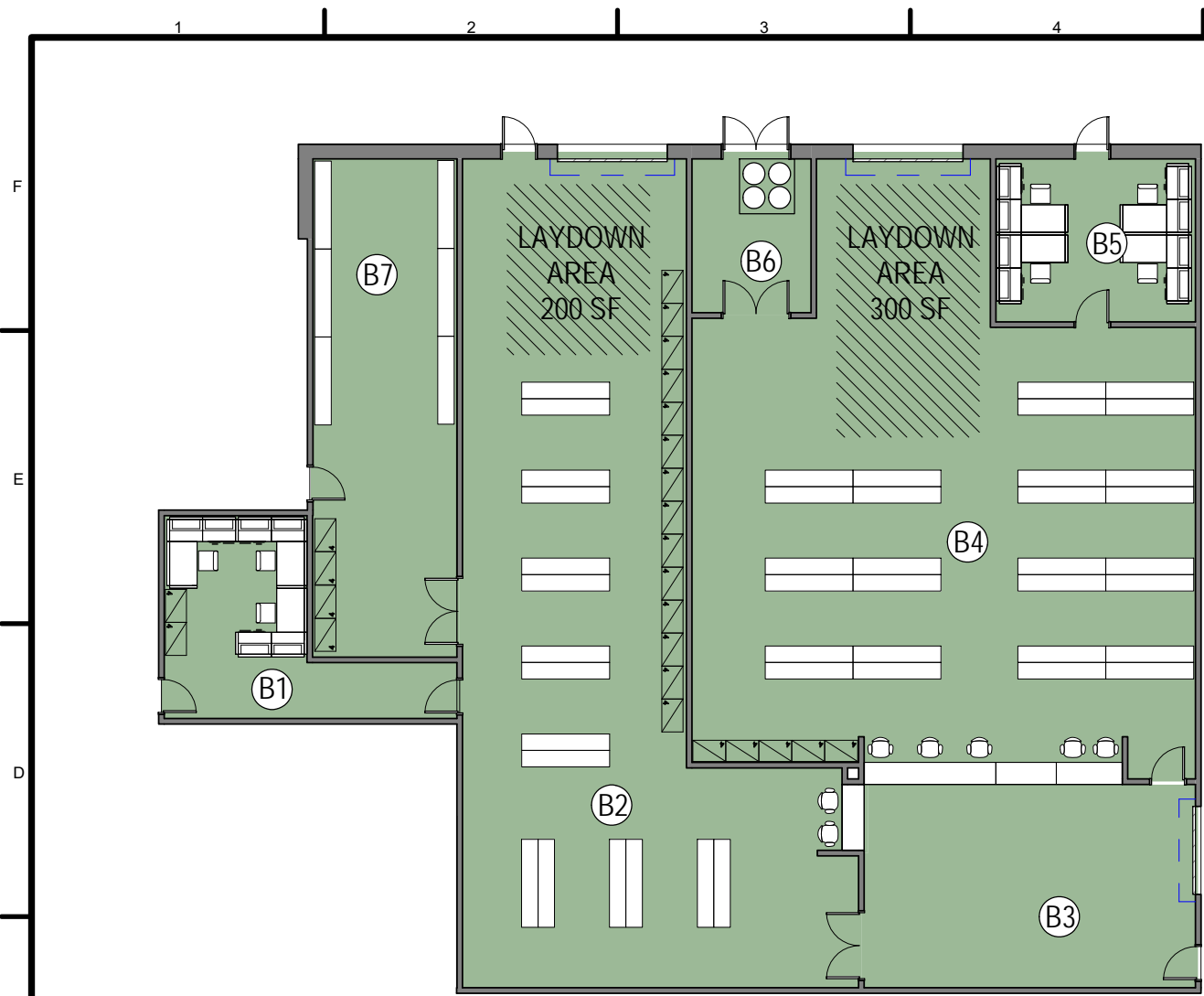


PHASE:	FINAL
DATE:	OCTOBER 2018
SCALE:	AS INDICATED

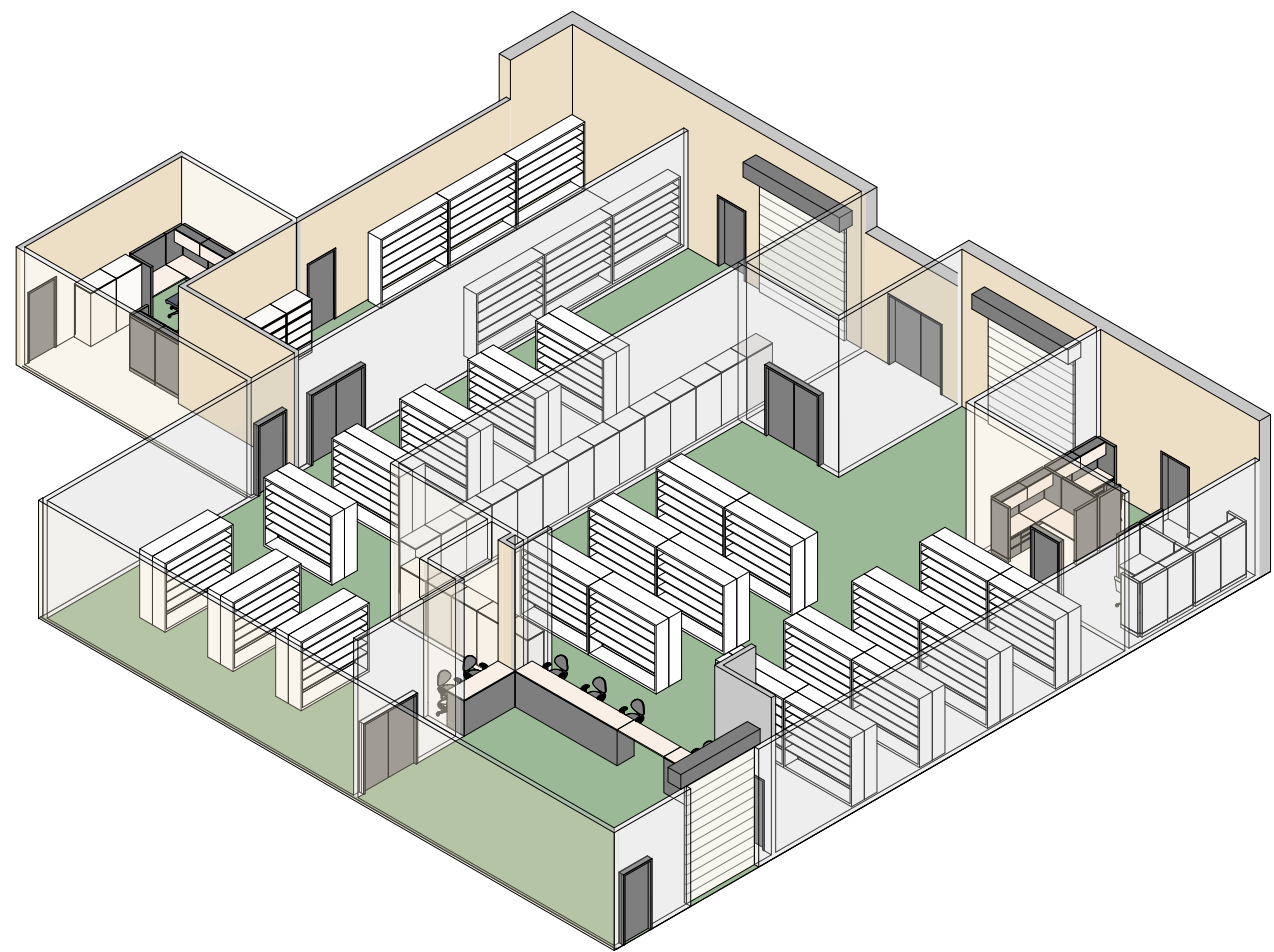
**AIR FORCE  
 CIVIL ENGINEER  
 CENTER**

DYNAMIC PROTOTYPE DEVELOPMENT  
 RPA GENERAL MAINTENANCE HANGAR,  
 CONUS  
**MODULES**

SHEET  
 NUMBER  
**A-2**



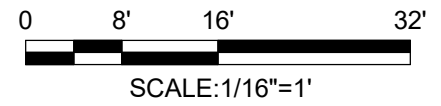
- (B1) SUPPLY OFFICE
- (B2) SUPPLY (TNB/FOM)
- (B3) TRANSACTION
- (B4) SUPPORT (TOOL CRIB)
- (B5) SUPPORT OFFICE
- (B6) HAZMAT
- (B7) STORAGE



MODULE NET AREA: 5,835 SF

\*NOTE : DAYLIGHTING PER UFC 1-200-02

**MODULE B:  
TOOLS, PARTS & SUPPORT**

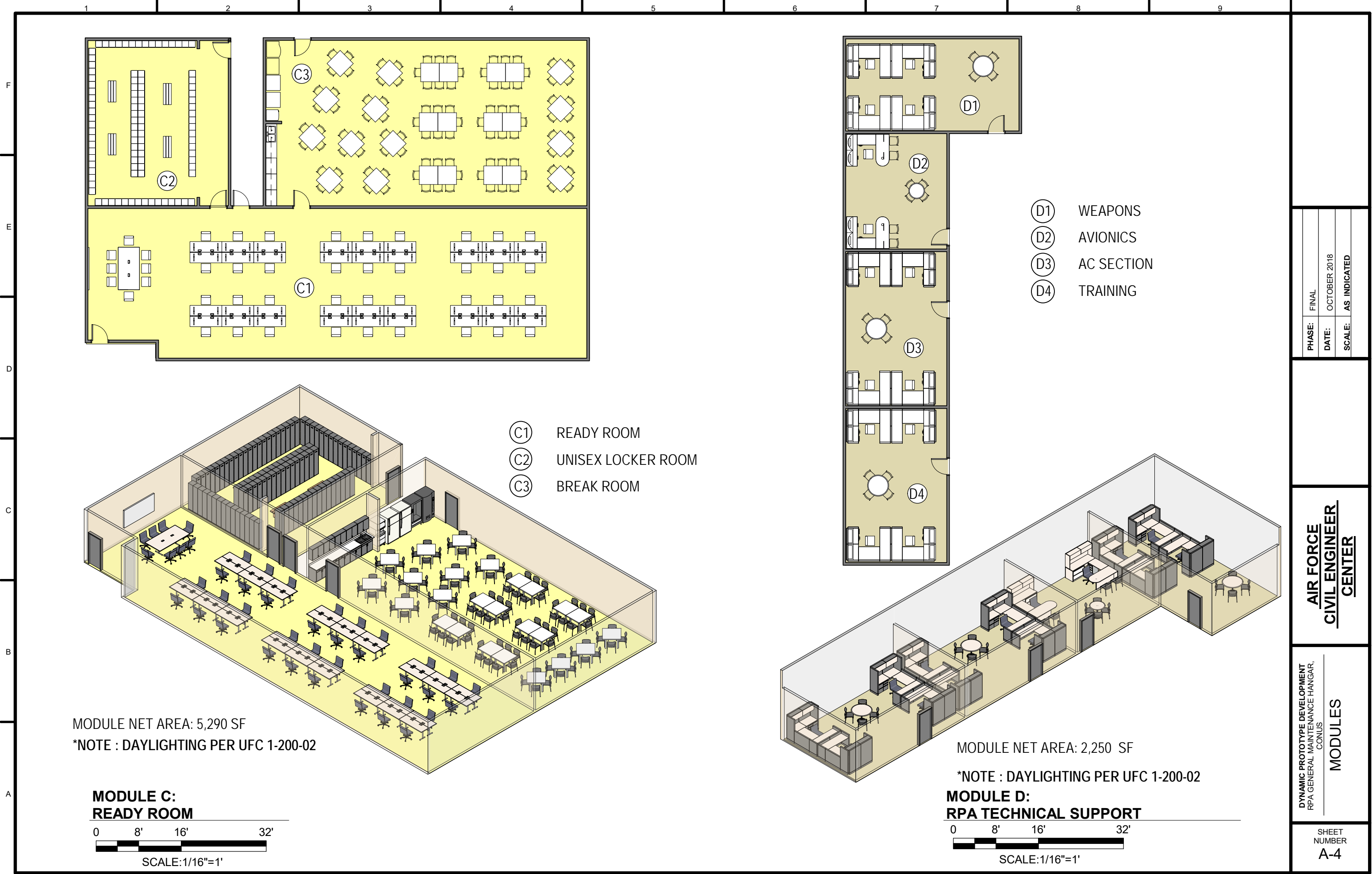


PHASE:	FINAL
DATE:	OCTOBER 2018
SCALE:	AS INDICATED

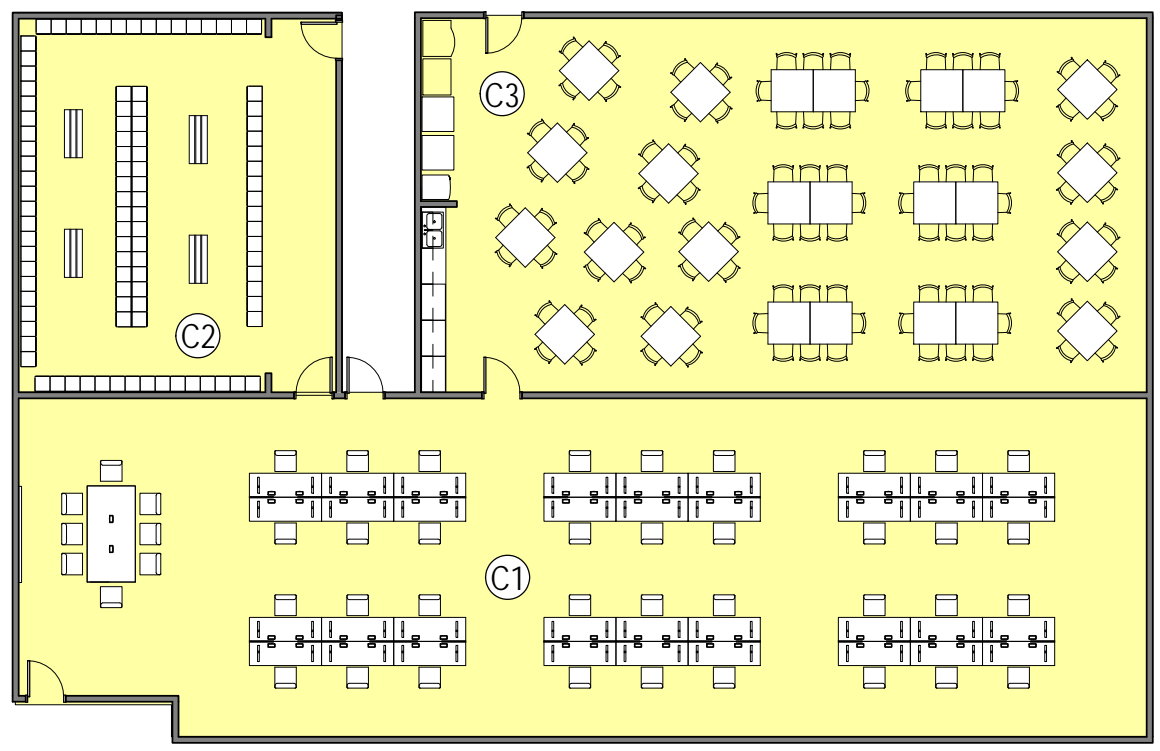
**AIR FORCE  
CIVIL ENGINEER  
CENTER**

DYNAMIC PROTOTYPE DEVELOPMENT  
RPA GENERAL MAINTENANCE HANGAR,  
CONUS  
**MODULES**

SHEET  
NUMBER  
**A-3**

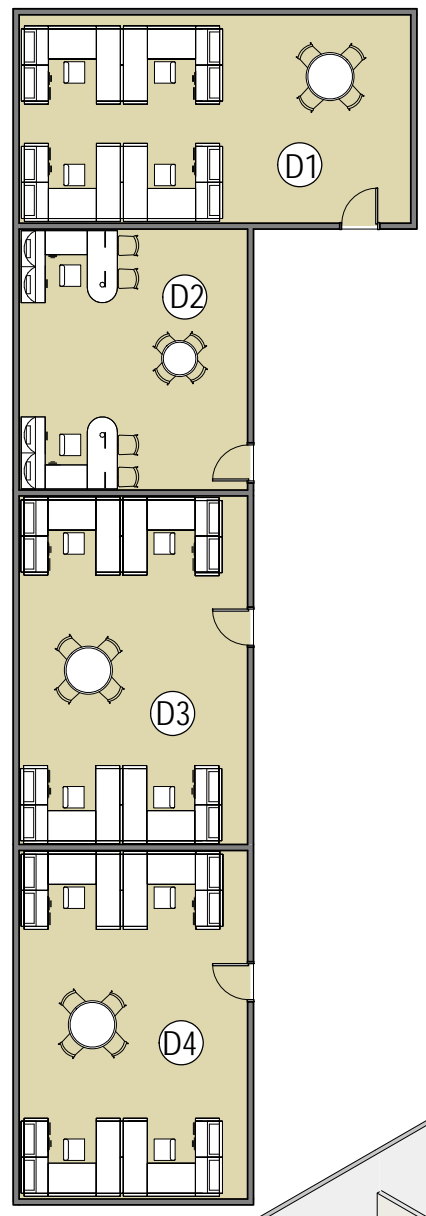
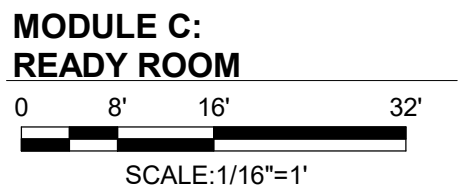


F  
E  
D  
C  
B  
A

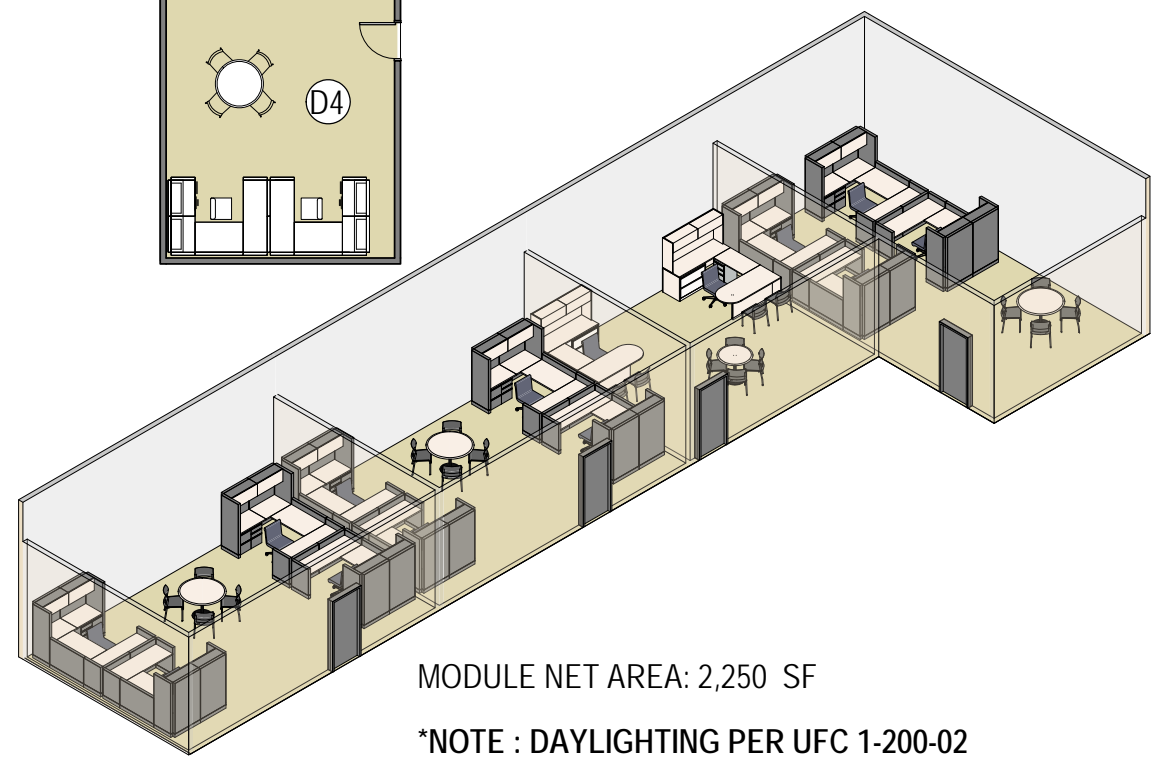


- (C1) READY ROOM
- (C2) UNISEX LOCKER ROOM
- (C3) BREAK ROOM

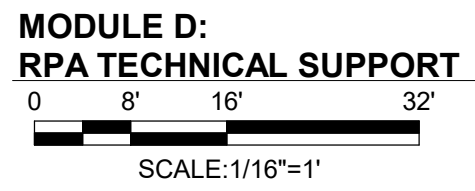
MODULE NET AREA: 5,290 SF  
\*NOTE : DAYLIGHTING PER UFC 1-200-02



- (D1) WEAPONS
- (D2) AVIONICS
- (D3) AC SECTION
- (D4) TRAINING



MODULE NET AREA: 2,250 SF  
\*NOTE : DAYLIGHTING PER UFC 1-200-02



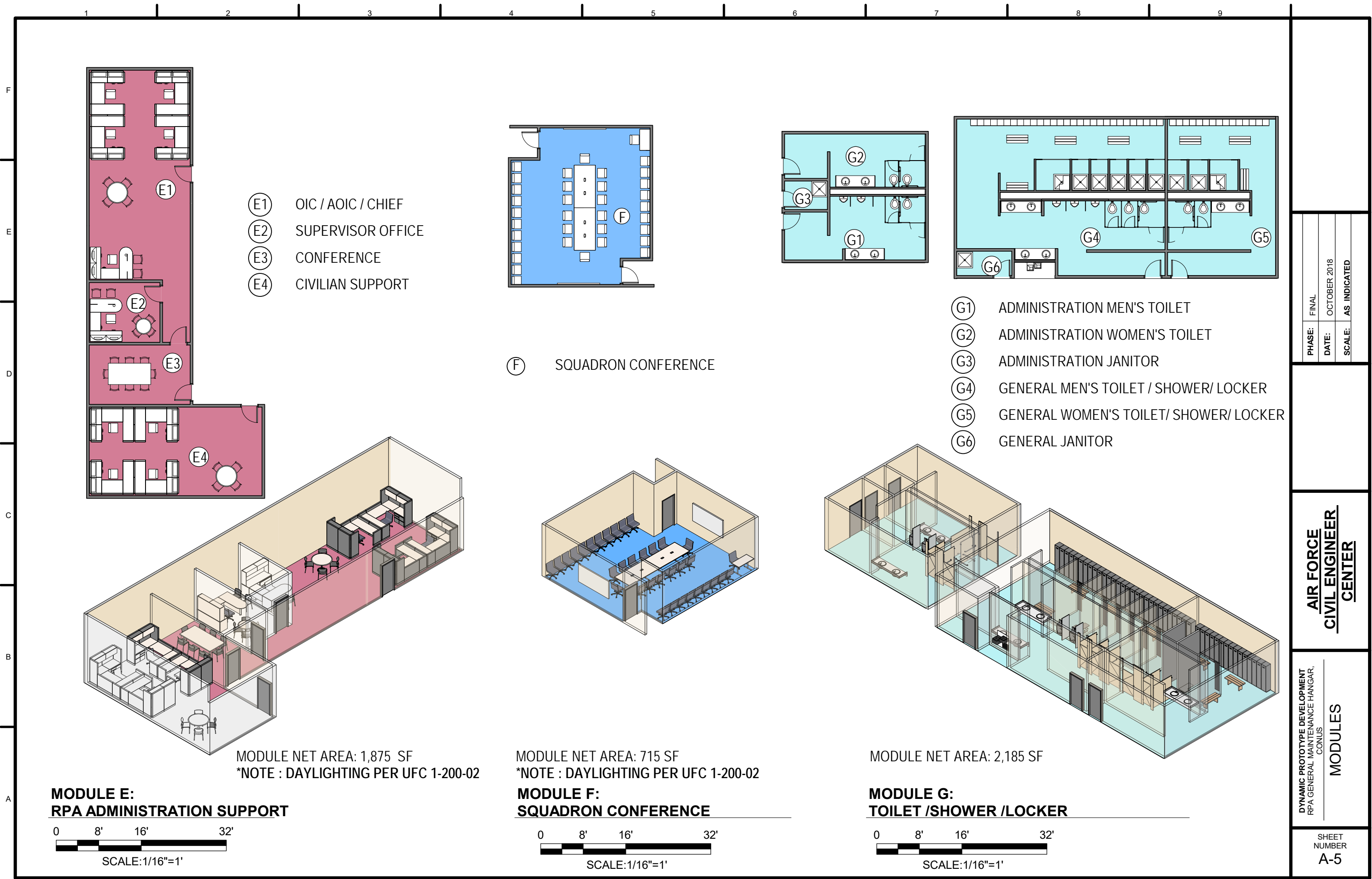
PHASE:	FINAL
DATE:	OCTOBER 2018
SCALE:	AS INDICATED

**AIR FORCE  
CIVIL ENGINEER  
CENTER**

DYNAMIC PROTOTYPE DEVELOPMENT  
RPA GENERAL MAINTENANCE HANGAR,  
CONUS  
**MODULES**

SHEET  
NUMBER  
**A-4**





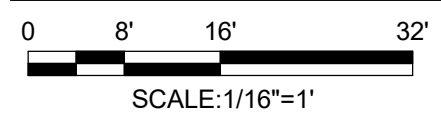
- (E1) OIC / AOIC / CHIEF
- (E2) SUPERVISOR OFFICE
- (E3) CONFERENCE
- (E4) CIVILIAN SUPPORT

(F) SQUADRON CONFERENCE

- (G1) ADMINISTRATION MEN'S TOILET
- (G2) ADMINISTRATION WOMEN'S TOILET
- (G3) ADMINISTRATION JANITOR
- (G4) GENERAL MEN'S TOILET / SHOWER/ LOCKER
- (G5) GENERAL WOMEN'S TOILET/ SHOWER/ LOCKER
- (G6) GENERAL JANITOR

**MODULE E:  
RPA ADMINISTRATION SUPPORT**

MODULE NET AREA: 1,875 SF  
\*NOTE : DAYLIGHTING PER UFC 1-200-02



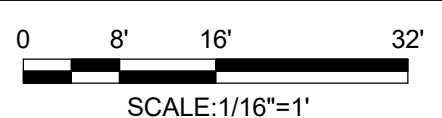
**MODULE F:  
SQUADRON CONFERENCE**

MODULE NET AREA: 715 SF  
\*NOTE : DAYLIGHTING PER UFC 1-200-02



**MODULE G:  
TOILET /SHOWER /LOCKER**

MODULE NET AREA: 2,185 SF

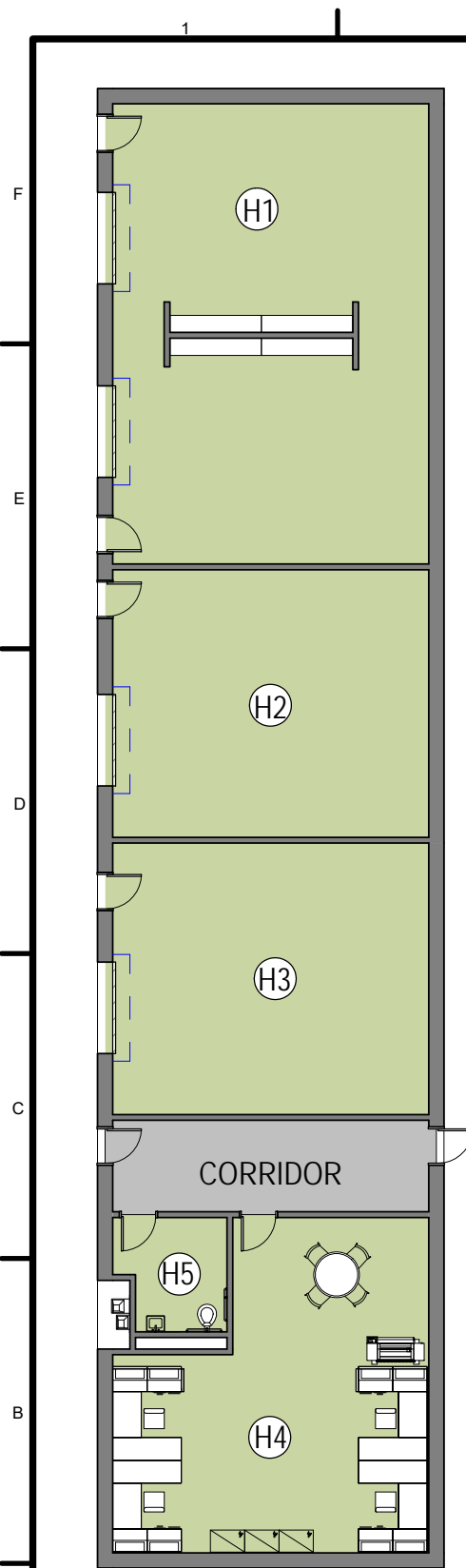


PHASE:	FINAL
DATE:	OCTOBER 2018
SCALE:	AS INDICATED

**AIR FORCE  
CIVIL ENGINEER  
CENTER**

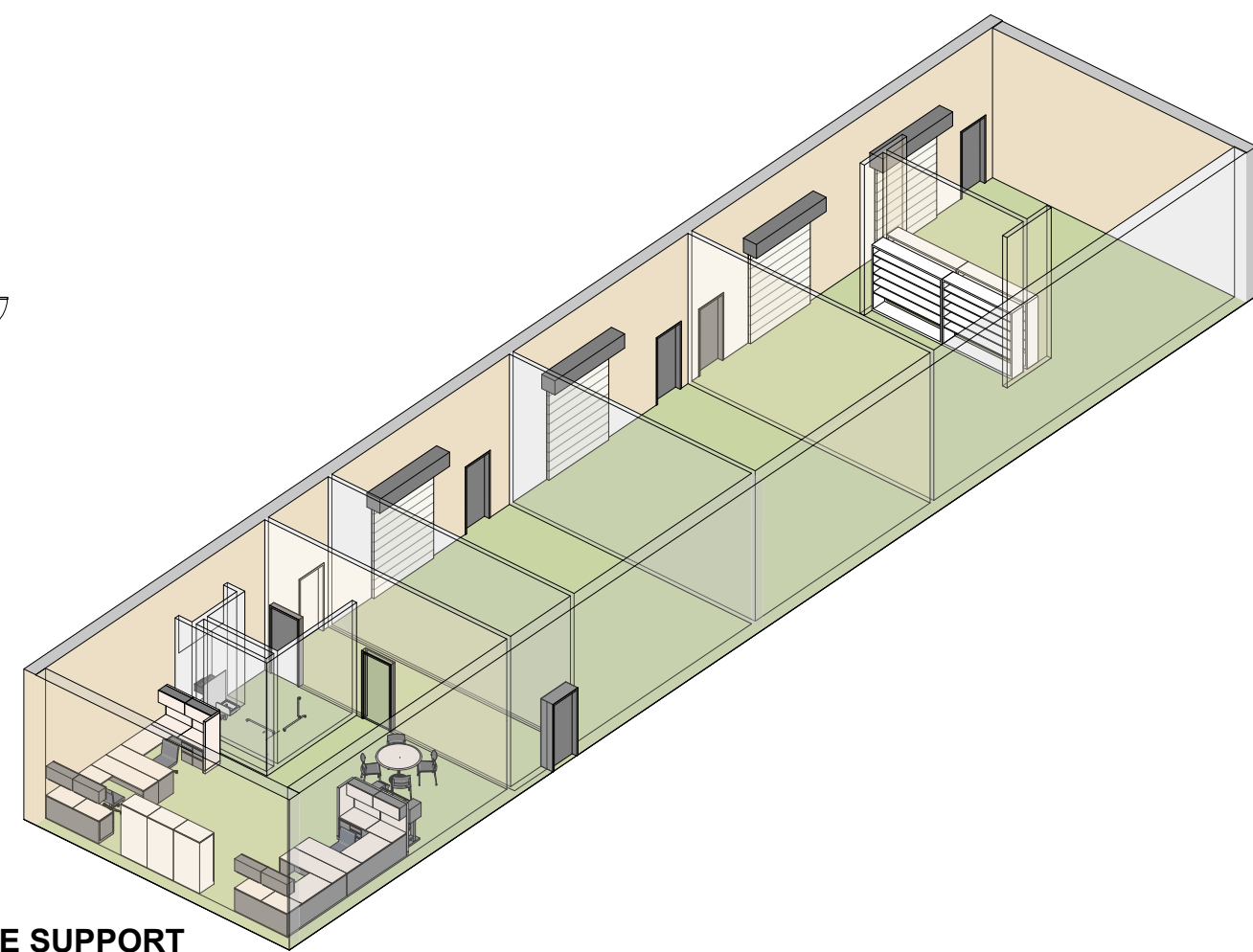
DYNAMIC PROTOTYPE DEVELOPMENT  
RPA GENERAL MAINTENANCE HANGAR,  
CONUS  
**MODULES**

SHEET  
NUMBER  
**A-5**

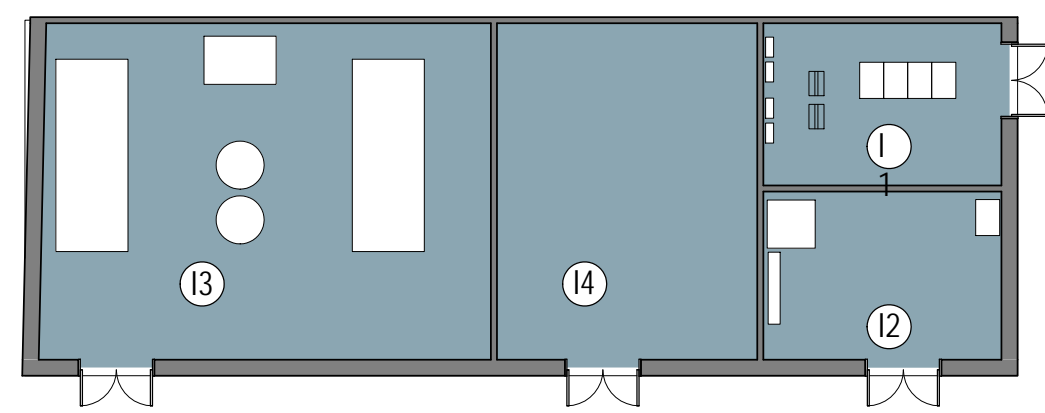
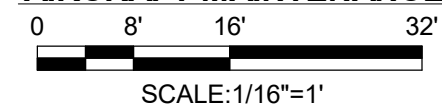


- (H1) ENGINE REPAIR SHOP
- (H2) SATCOM SHOP
- (H3) BATTERY SHOP
- (H4) MANAGEMENT OFFICE
- (H5) UNISEX TOILET

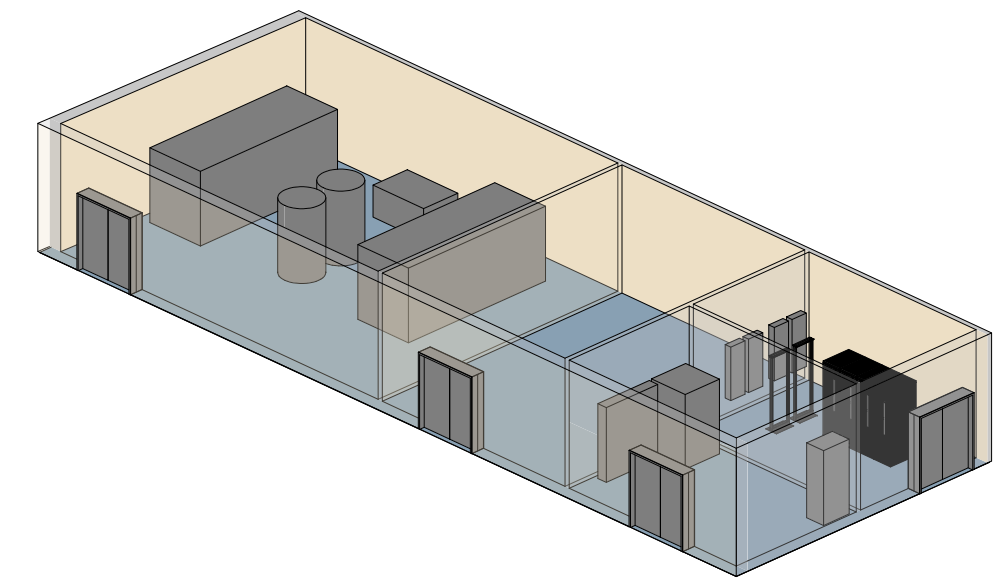
MODULE NET AREA: 4,265 SF  
 \*NOTE : DAYLIGHTING PER UFC 1-200-02



**MODULE H:  
 AIRCRAFT MAINTENANCE SUPPORT**



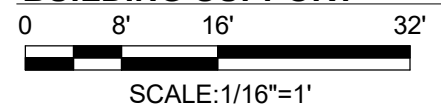
- (1) TELECOMMUNICATIONS
- (2) ELECTRICAL
- (3) MECHANICAL
- (4) FIRE PUMP



\*BUILDING SUPPORT AREAS ARE ESTIMATES ONLY.  
 ACTUAL SIZE IS DEPENDENT ON REQUIREMENTS FOR  
 CLIMATE ZONE, LOCATION, SYSTEMS, ETC.

AREA IS NOT INCLUDED IN POC NET SQUARE FOOTAGE TOTAL  
 MODULE NET AREA: 2,205 SF

**MODULE I:  
 BUILDING SUPPORT**



PHASE:	FINAL
DATE:	OCTOBER 2018
SCALE:	AS INDICATED

**AIR FORCE  
 CIVIL ENGINEER  
 CENTER**

DYNAMIC PROTOTYPE DEVELOPMENT  
 RPA GENERAL MAINTENANCE HANGAR,  
 CONUS  
**MODULES**

SHEET  
 NUMBER  
**A-6**

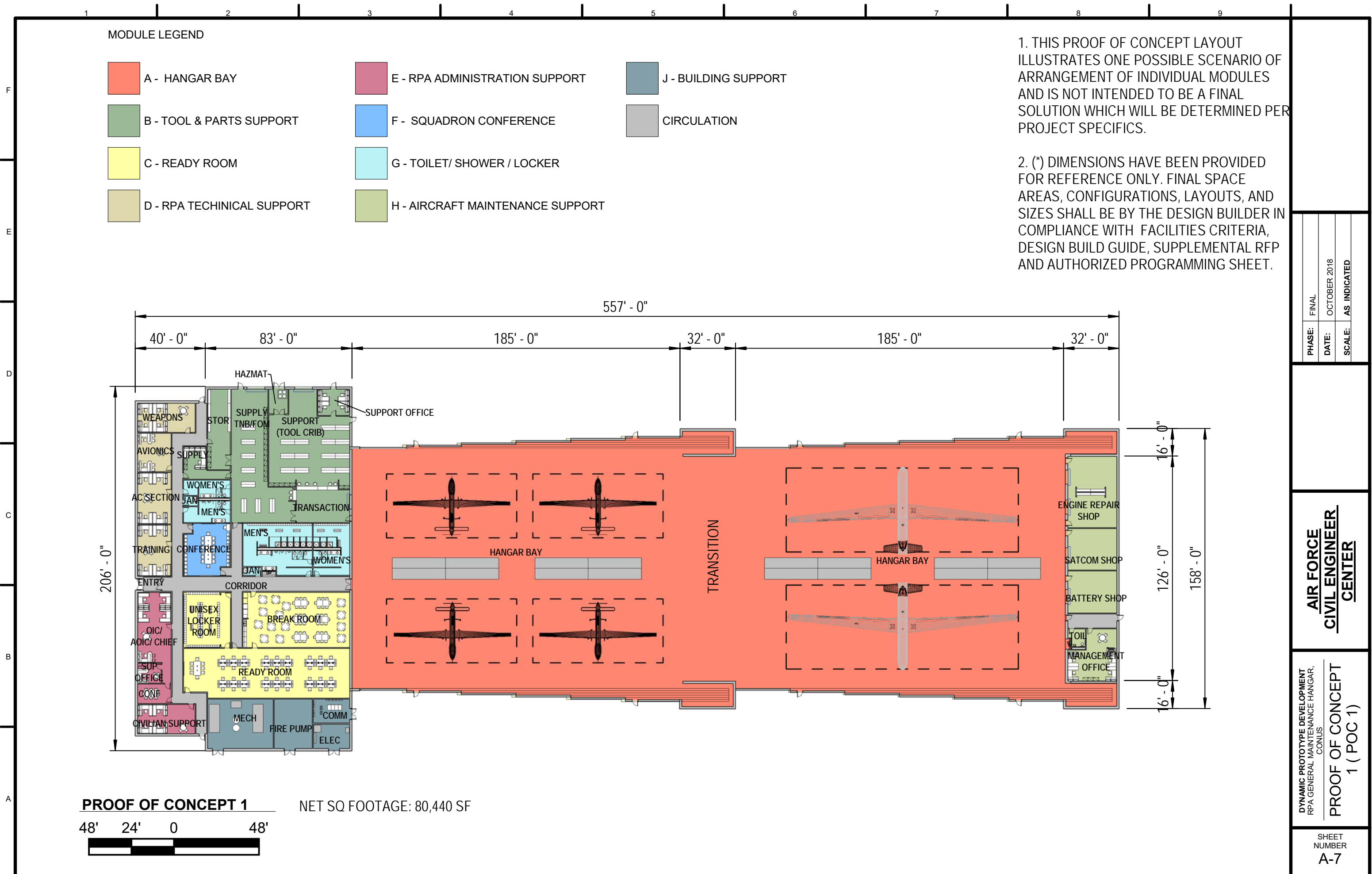
MODULE LEGEND

- A - HANGAR BAY
- E - RPA ADMINISTRATION SUPPORT
- J - BUILDING SUPPORT
- B - TOOL & PARTS SUPPORT
- F - SQUADRON CONFERENCE
- CIRCULATION
- C - READY ROOM
- G - TOILET/ SHOWER / LOCKER
- D - RPA TECHNICAL SUPPORT
- H - AIRCRAFT MAINTENANCE SUPPORT

1. THIS PROOF OF CONCEPT LAYOUT ILLUSTRATES ONE POSSIBLE SCENARIO OF ARRANGEMENT OF INDIVIDUAL MODULES AND IS NOT INTENDED TO BE A FINAL SOLUTION WHICH WILL BE DETERMINED PER PROJECT SPECIFICS.

2. (\*) DIMENSIONS HAVE BEEN PROVIDED FOR REFERENCE ONLY. FINAL SPACE AREAS, CONFIGURATIONS, LAYOUTS, AND SIZES SHALL BE BY THE DESIGN BUILDER IN COMPLIANCE WITH FACILITIES CRITERIA, DESIGN BUILD GUIDE, SUPPLEMENTAL RFP AND AUTHORIZED PROGRAMMING SHEET.

PHASE:	FINAL	DATE:	OCTOBER 2018
SCALE:	AS INDICATED		



**PROOF OF CONCEPT 1**      NET SQ FOOTAGE: 80,440 SF

48'   24'   0   48'

**AIR FORCE  
CIVIL ENGINEER  
CENTER**

DYNAMIC PROTOTYPE DEVELOPMENT  
RPA GENERAL MAINTENANCE HANGAR,  
CONUS  
**PROOF OF CONCEPT  
1 (POC 1)**

SHEET  
NUMBER  
**A-7**



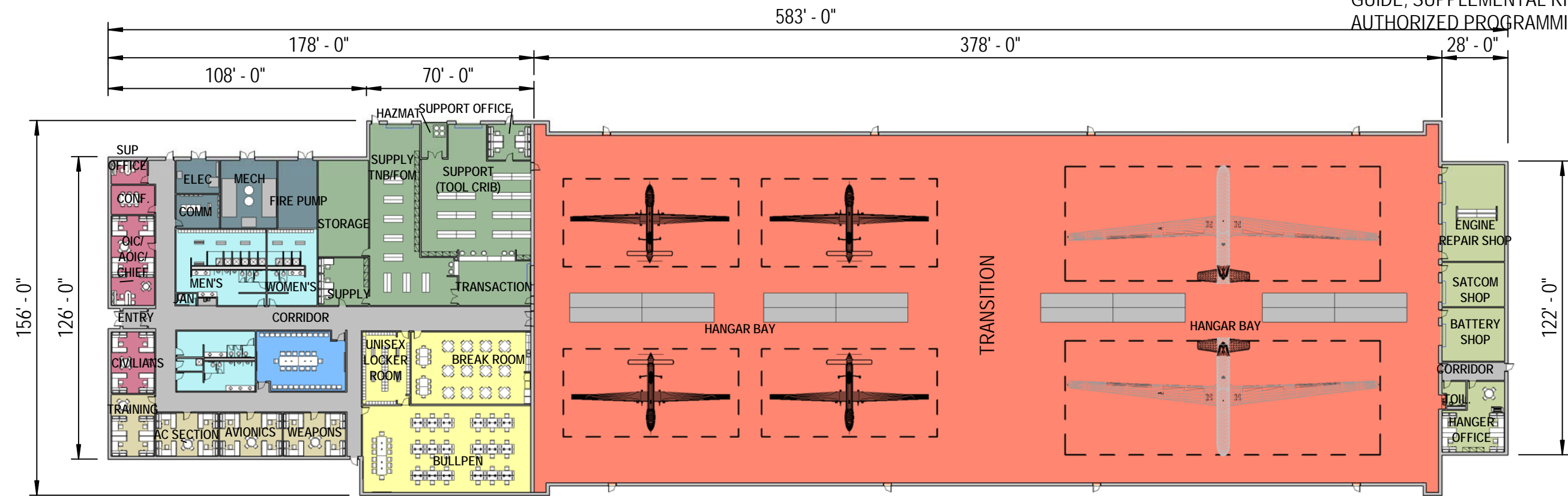
MODULE LEGEND

- A - HANGAR BAY
- F - SQUADRON CONFERENCE
- B - TOOL & PARTS SUPPORT
- G - TOILET/ SHOWER / LOCKER
- C - READY ROOM
- H - AIRCRAFT MAINTENANCE SUPPORT
- D - RPA TECHNICAL SUPPORT
- J - BUILDING SUPPORT
- E - RPA ADMINISTRATION SUPPORT
- CIRCULATION

1. THIS PROOF OF CONCEPT LAYOUT ILLUSTRATES ONE POSSIBLE SCENARIO OF ARRANGEMENT OF INDIVIDUAL MODULES AND IS NOT INTENDED TO BE A FINAL SOLUTION WHICH WILL BE DETERMINED PER PROJECT SPECIFICS.

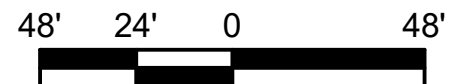
2. (\*) DIMENSIONS HAVE BEEN PROVIDED FOR REFERENCE ONLY. FINAL SPACE AREAS, CONFIGURATIONS, LAYOUTS, AND SIZES SHALL BE BY THE DESIGN BUILDER IN COMPLIANCE WITH FACILITIES CRITERIA, DESIGN BUILD GUIDE, SUPPLEMENTAL RFP AND AUTHORIZED PROGRAMMING SHEET.

F  
E  
D  
C  
B  
A



NET SQ FOOTAGE: 77,145 SF

**PROOF OF CONCEPT 2**



PHASE:	FINAL
DATE:	OCTOBER 2018
SCALE:	AS INDICATED

**AIR FORCE  
CIVIL ENGINEER  
CENTER**

DYNAMIC PROTOTYPE DEVELOPMENT  
RPA GENERAL MAINTENANCE HANGAR,  
CONUS  
**PROOF OF CONCEPT  
2 (POC 2)**

SHEET  
NUMBER  
**A-8**