

GENERAL NOTES

1. USE THESE DOCUMENTS IN CONJUNCTION WITH THE STANDARD DESIGN GUIDE AND INTERACTIVE PROGRAMMING WORKSHEET.

DRAWING LIST

NUMBER	NAME
C-1	COVER SHEET
A-1	STANDARD DESIGN
A-2	MODULE A PLAN & AXON
A-3	MODULE B PLAN & AXON
A-4	MODULES C & D PLANS & AXONS
A-5	MODULES E & F PLANS & AXONS
A-6	MODULE G PLAN & AXON
A-7	MODULES H & J PLANS & AXONS
A-8	MODULE K PLAN & AXON

AIR FORCE STANDARD DESIGN CORROSION CONTROL/ FUEL CELL MAINTENANCE HANGAR FACILITY



PHASE: PRE-FINAL
DATE: MAY 2018
SCALE: AS INDICATED







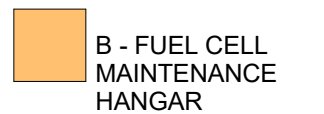
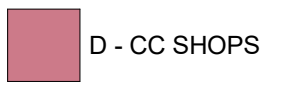
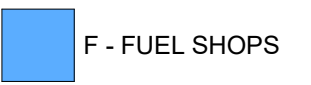
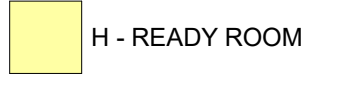

**AIR FORCE
CIVIL ENGINEER
CENTER**

CIVIL ENGINEER SQUADRON:
CORROSION CONTROL/ FUEL CELL
MAINTENANCE HANGAR
ANY AFB, CONUS
COVER SHEET

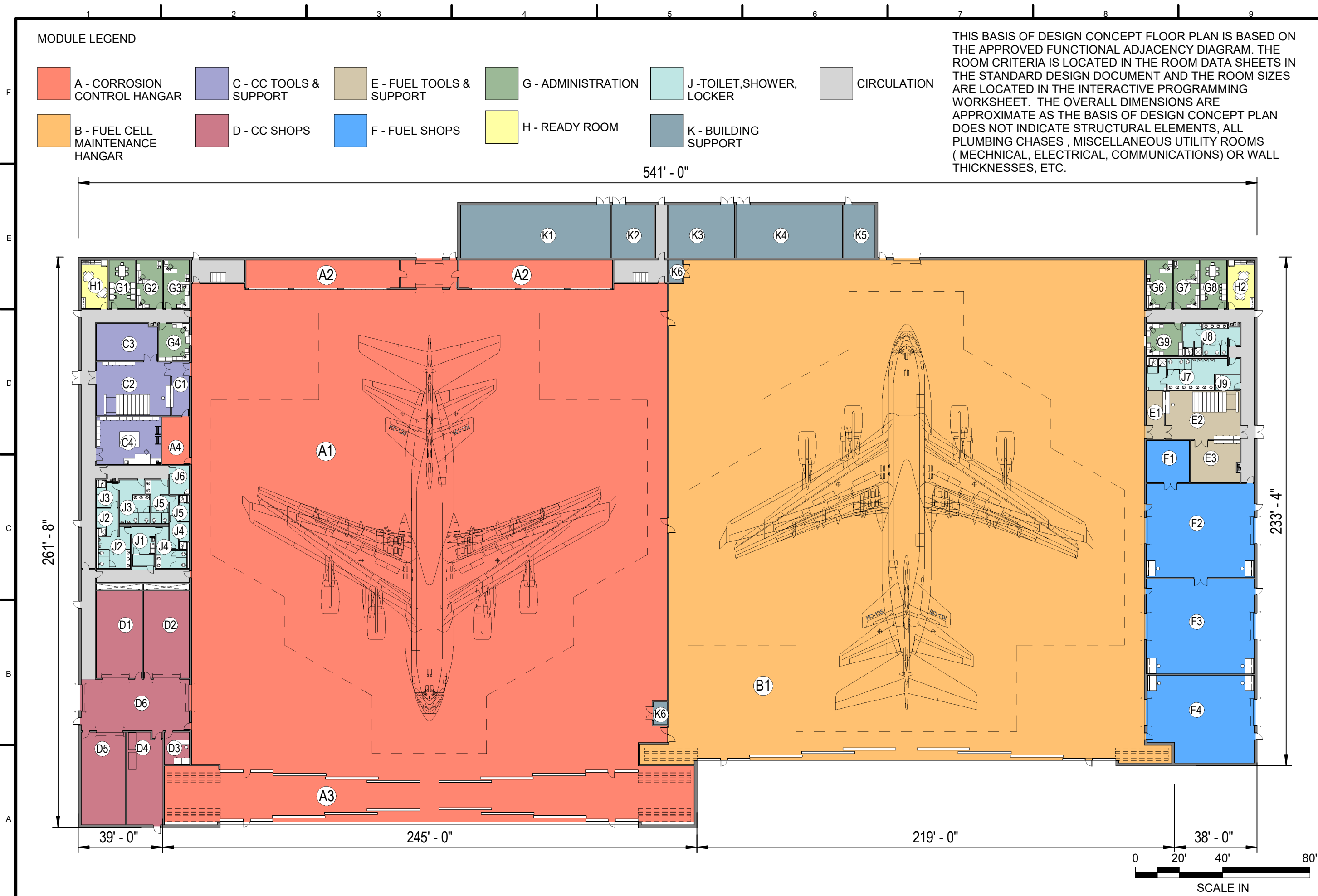
**PRE - FINAL
MAY 2018**

SHEET
NUMBER
C-1

MODULE LEGEND

-  A - CORROSION CONTROL HANGAR
-  C - CC TOOLS & SUPPORT
-  E - FUEL TOOLS & SUPPORT
-  G - ADMINISTRATION
-  J - TOILET, SHOWER, LOCKER
-  CIRCULATION
-  B - FUEL CELL MAINTENANCE HANGAR
-  D - CC SHOPS
-  F - FUEL SHOPS
-  H - READY ROOM
-  K - BUILDING SUPPORT

THIS BASIS OF DESIGN CONCEPT FLOOR PLAN IS BASED ON THE APPROVED FUNCTIONAL ADJACENCY DIAGRAM. THE ROOM CRITERIA IS LOCATED IN THE ROOM DATA SHEETS IN THE STANDARD DESIGN DOCUMENT AND THE ROOM SIZES ARE LOCATED IN THE INTERACTIVE PROGRAMMING WORKSHEET. THE OVERALL DIMENSIONS ARE APPROXIMATE AS THE BASIS OF DESIGN CONCEPT PLAN DOES NOT INDICATE STRUCTURAL ELEMENTS, ALL PLUMBING CHASES, MISCELLANEOUS UTILITY ROOMS (MECHANICAL, ELECTRICAL, COMMUNICATIONS) OR WALL THICKNESSES, ETC.



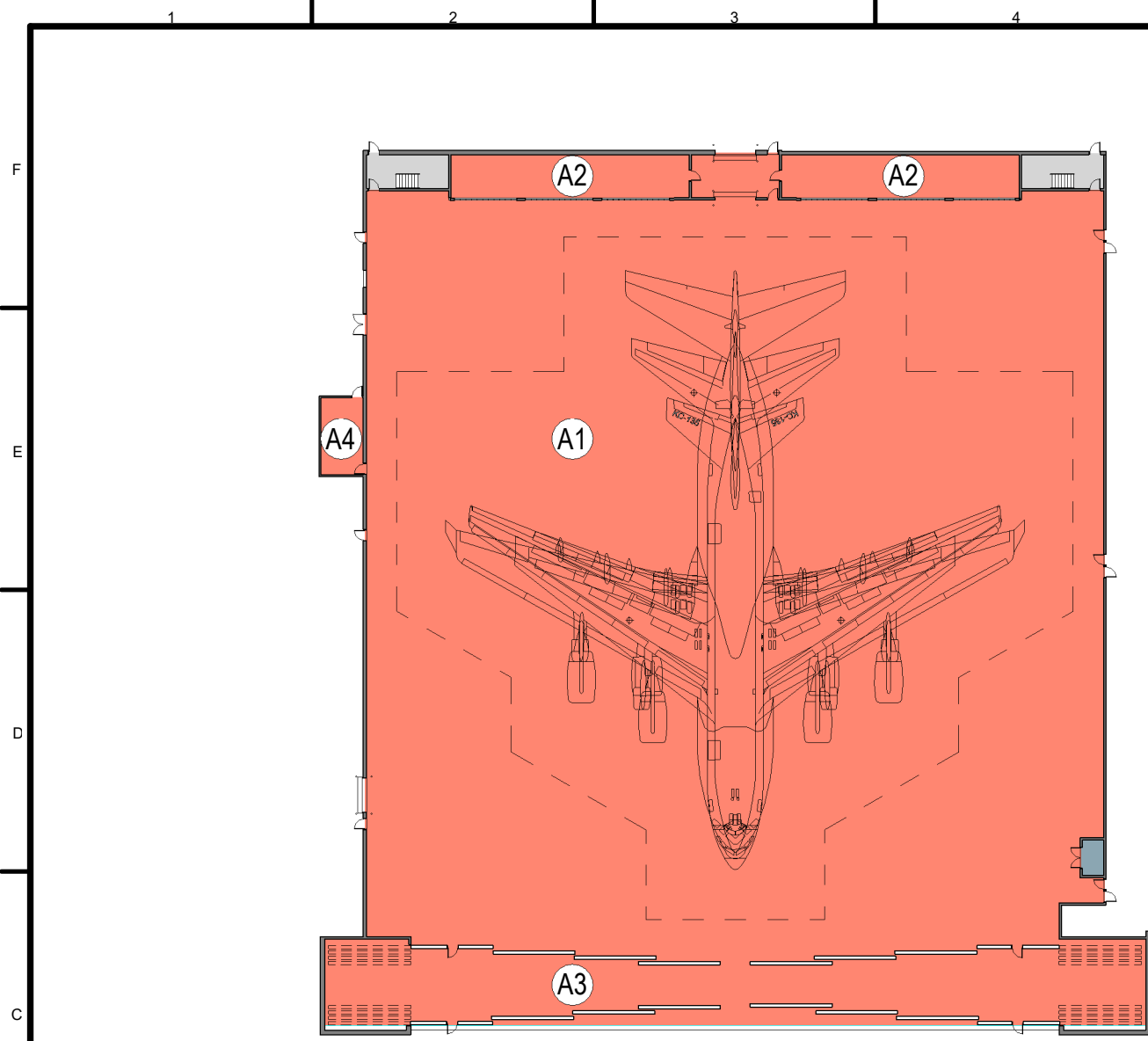
PHASE:	PRE-FINAL
DATE:	MAY 2018
SCALE:	AS INDICATED

**AIR FORCE
CIVIL ENGINEER
CENTER**

CIVIL ENGINEER SQUADRON:
CORROSION CONTROL / FUEL CELL
MAINTENANCE HANGAR
ANY AFB, CONUS
STANDARD DESIGN

SHEET NUMBER
A-1

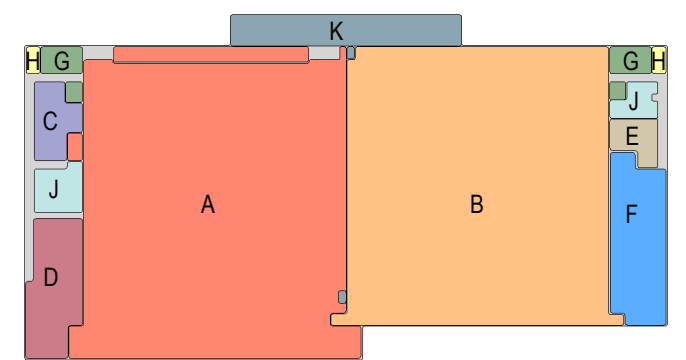
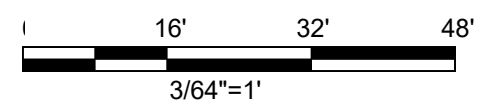
NOT FOR CONSTRUCTION



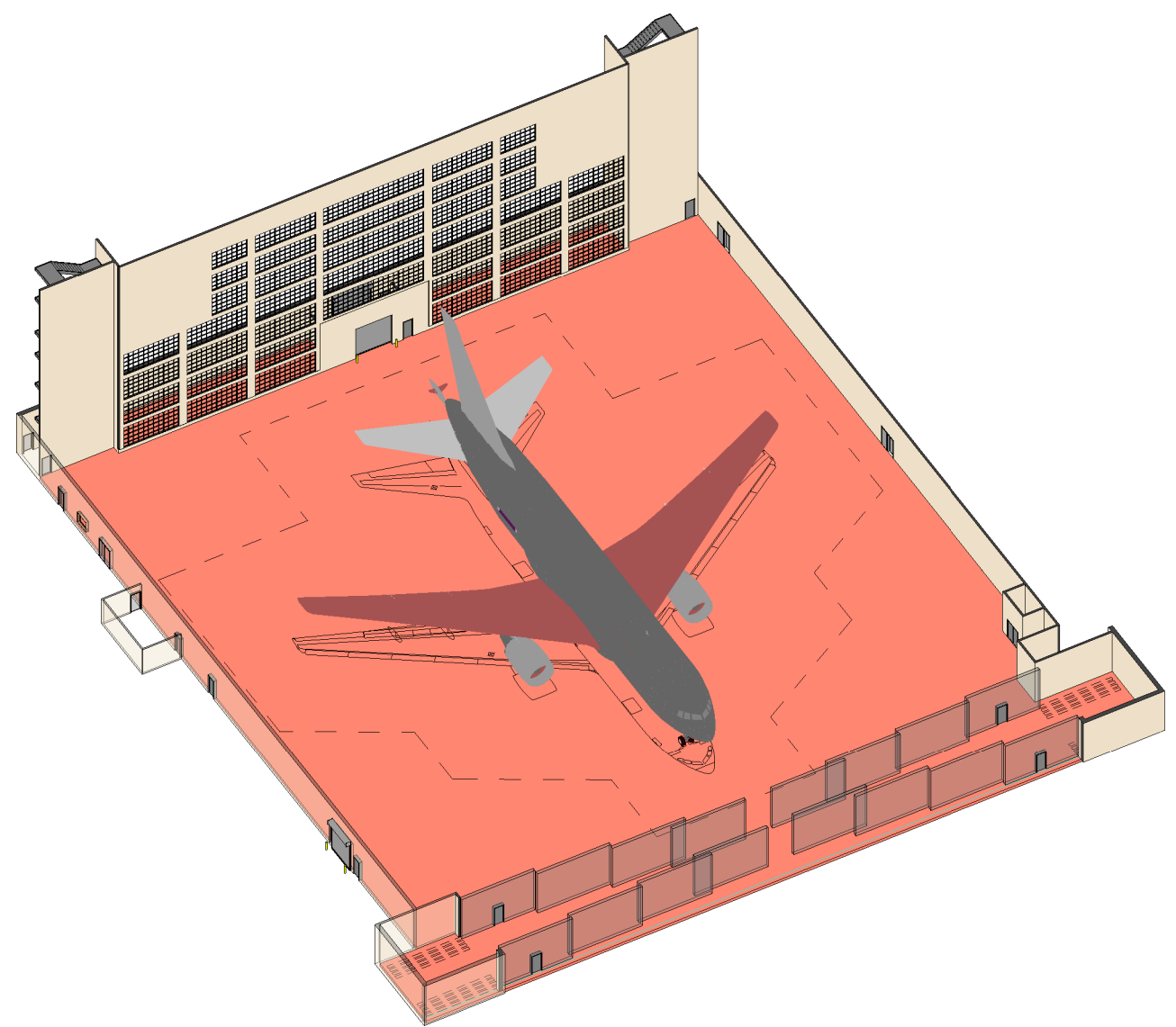
- (A1) CORROSION CONTROL HANGAR
- (A2) RETURN AIR FILTRATION
- (A3) SUPPLY AIR PLENUM
- (A4) FILTER STORAGE

TOTAL AREA OF MODULE = 56,225 SF

**MODULE A :
CORROSION CONTROL HANGAR**



KEYPLAN

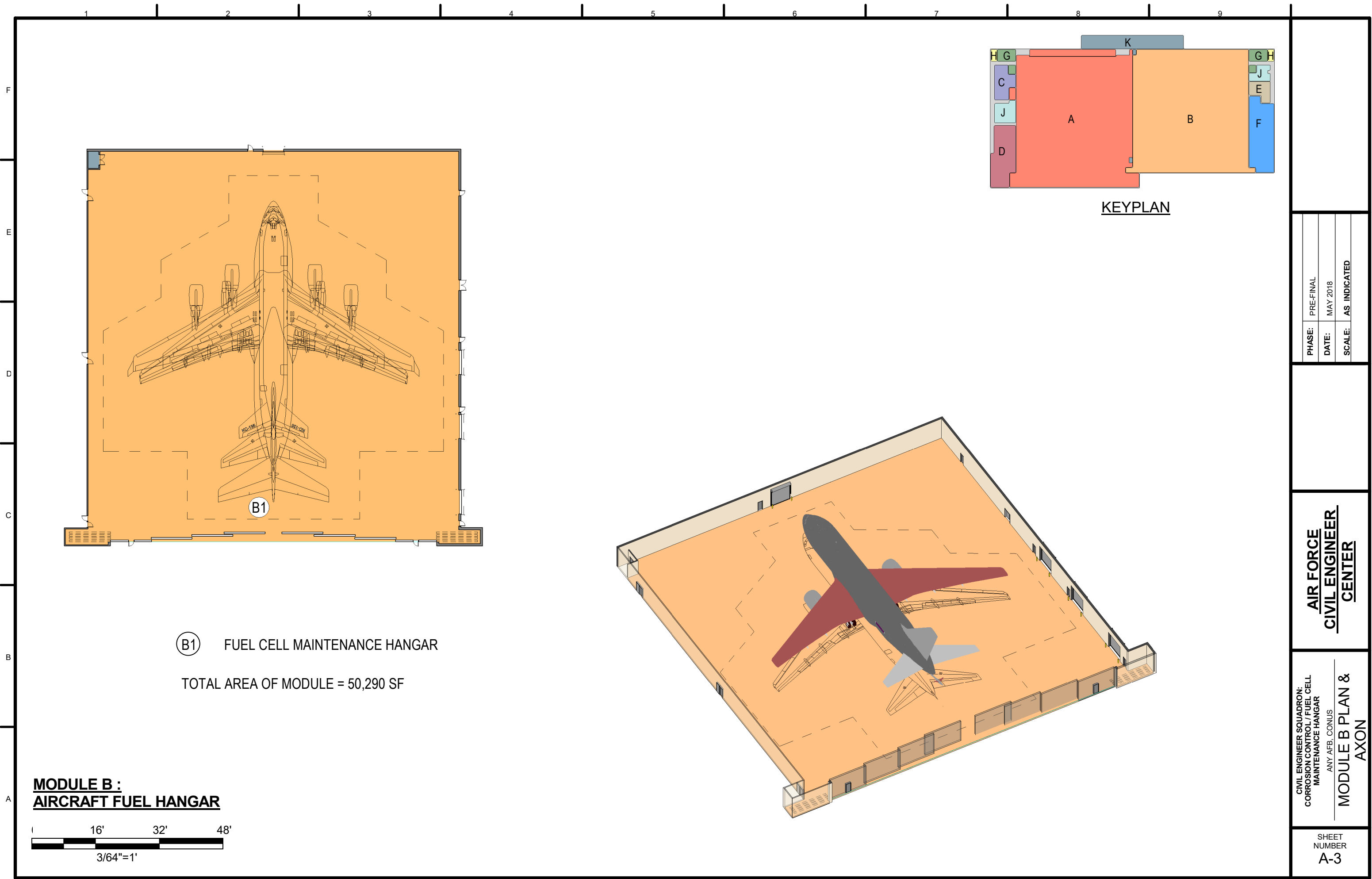


PHASE:	PRE-FINAL
DATE:	MAY 2018
SCALE:	AS INDICATED

**AIR FORCE
CIVIL ENGINEER
CENTER**

CIVIL ENGINEER SQUADRON:
CORROSION CONTROL / FUEL CELL
MAINTENANCE HANGAR
ANY AFB, CONUS
**MODULE A PLAN &
AXON**

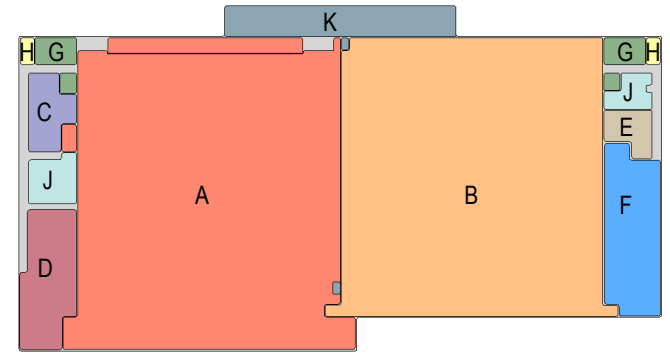
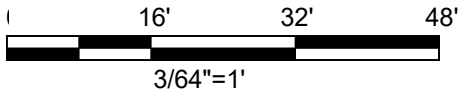
SHEET
NUMBER
A-2



(B1) FUEL CELL MAINTENANCE HANGAR

TOTAL AREA OF MODULE = 50,290 SF

**MODULE B :
AIRCRAFT FUEL HANGAR**



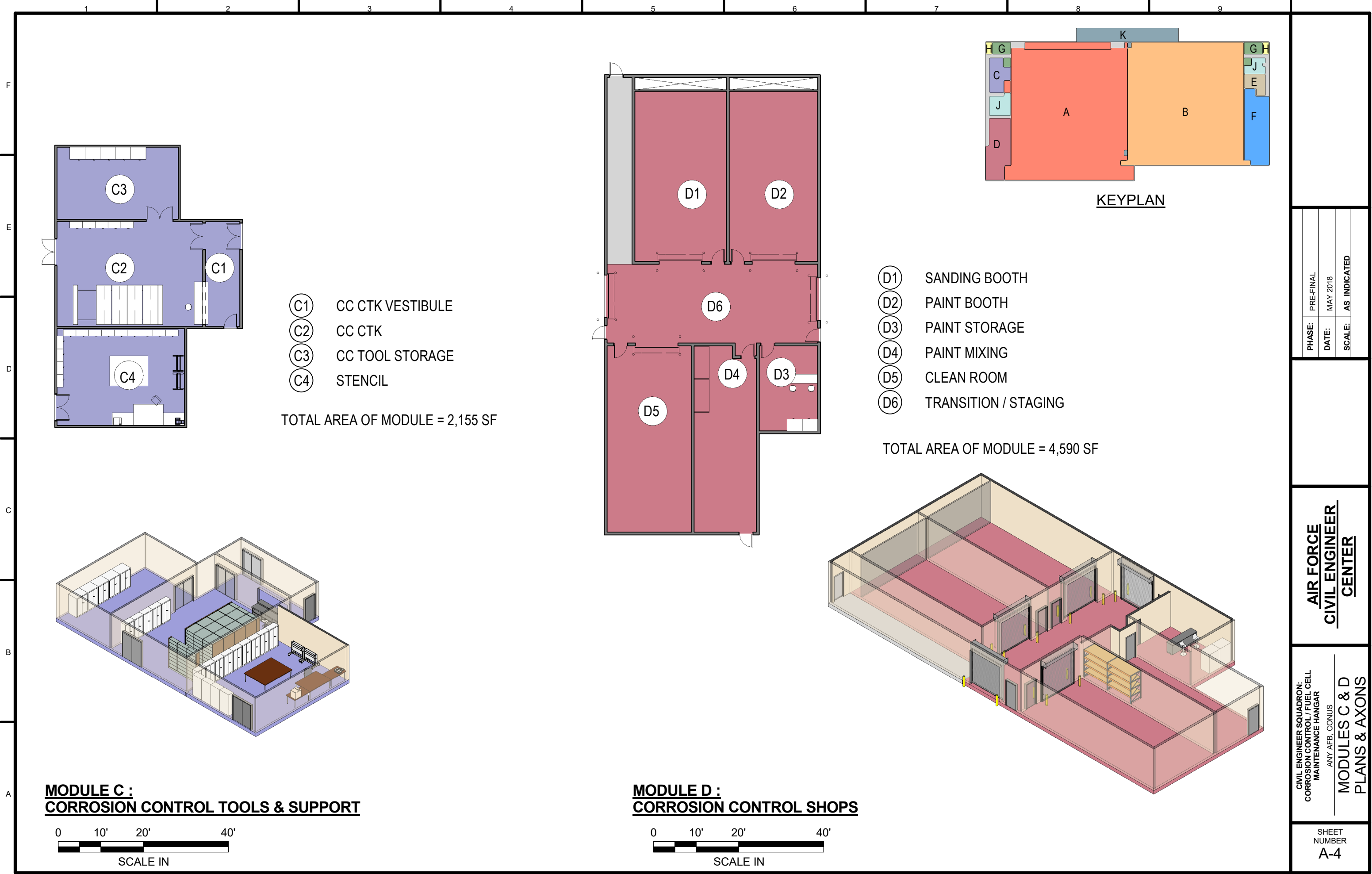
KEYPLAN

PHASE:	PRE-FINAL
DATE:	MAY 2018
SCALE:	AS INDICATED

**AIR FORCE
CIVIL ENGINEER
CENTER**

CIVIL ENGINEER SQUADRON:
CORROSION CONTROL / FUEL CELL
MAINTENANCE HANGAR
ANY AFB, CONUS
**MODULE B PLAN &
AXON**

SHEET
NUMBER
A-3



**MODULE C :
CORROSION CONTROL TOOLS & SUPPORT**



- (C1) CC CTK VESTIBULE
- (C2) CC CTK
- (C3) CC TOOL STORAGE
- (C4) STENCIL

TOTAL AREA OF MODULE = 2,155 SF

**MODULE D :
CORROSION CONTROL SHOPS**



- (D1) SANDING BOOTH
- (D2) PAINT BOOTH
- (D3) PAINT STORAGE
- (D4) PAINT MIXING
- (D5) CLEAN ROOM
- (D6) TRANSITION / STAGING

TOTAL AREA OF MODULE = 4,590 SF

KEYPLAN

PHASE:	PRE-FINAL
DATE:	MAY 2018
SCALE:	AS INDICATED

**AIR FORCE
CIVIL ENGINEER
CENTER**

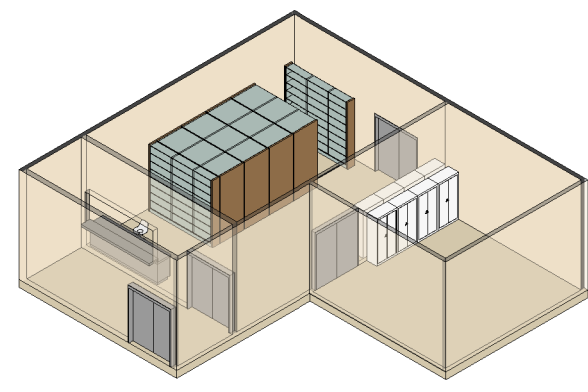
CIVIL ENGINEER SQUADRON:
CORROSION CONTROL / FUEL CELL
MAINTENANCE HANGAR
ANY AFB, CONUS
**MODULES C & D
PLANS & AXONS**

SHEET
NUMBER
A-4

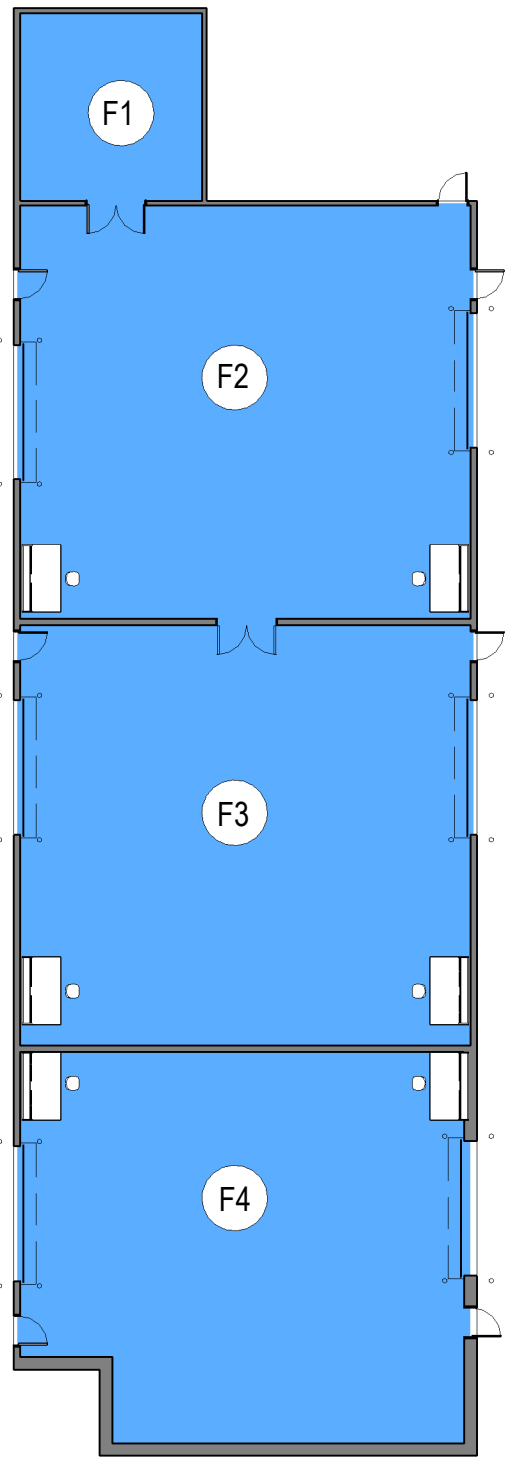


- ⓔ1 FUEL SHOP CTK VESTIBULE
- ⓔ2 FUEL SHOP CTK
- ⓔ3 FUEL TOOL STORAGE

TOTAL AREA OF MODULE = 1,370 SF

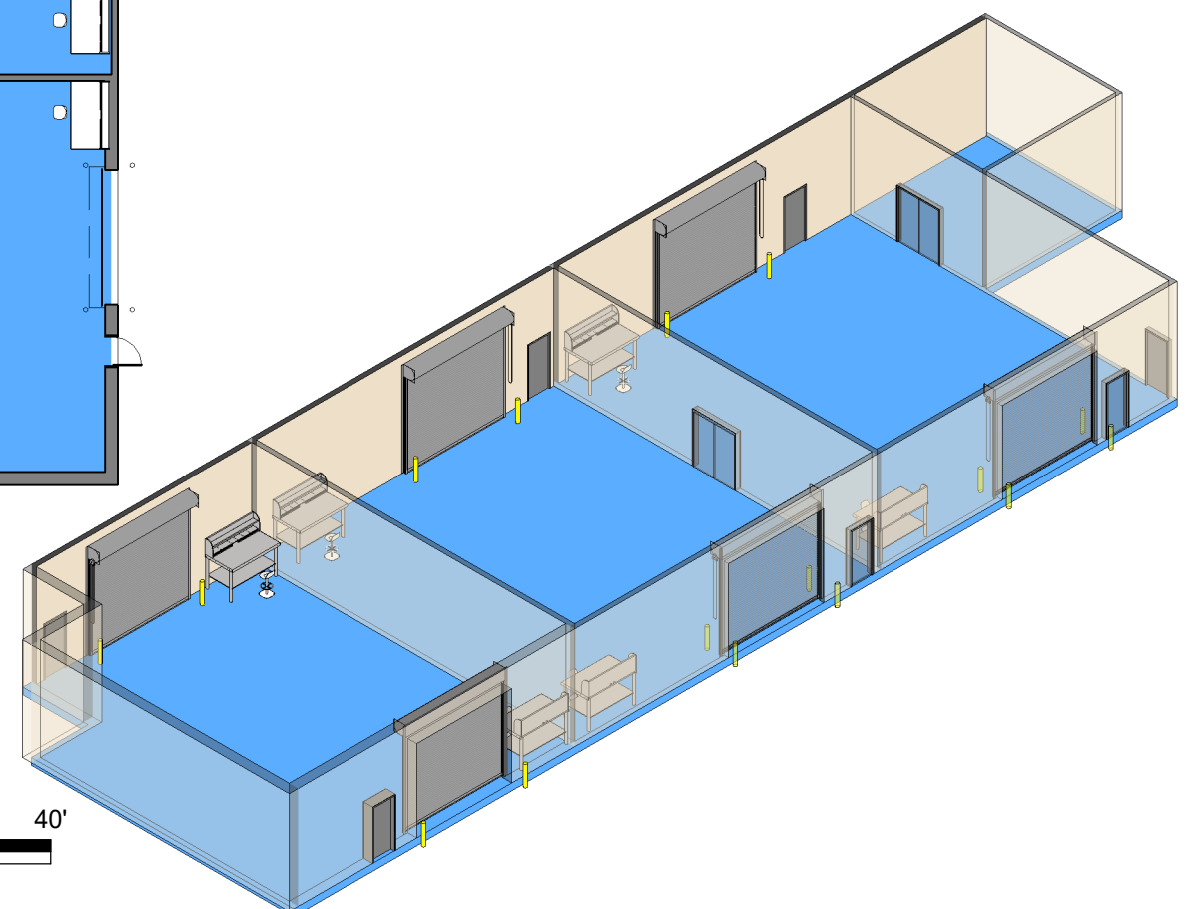


**MODULE E :
FUEL TOOLS & SUPPORT**

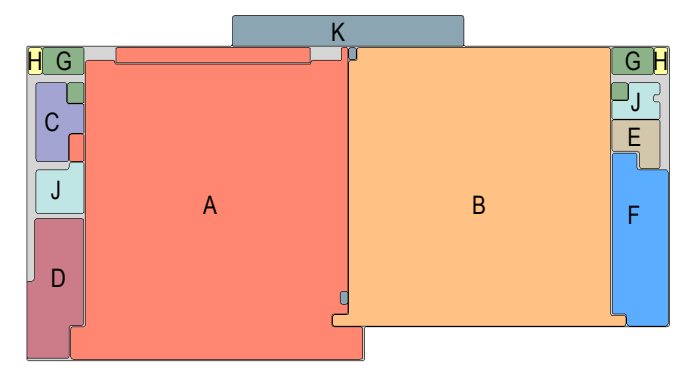
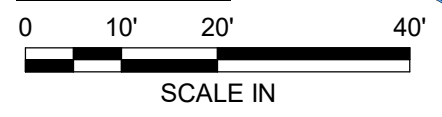


- ⓕ1 FUEL SHOP STORAGE
- ⓕ2 FUEL SHOP
- ⓕ3 FUEL TANK REPAIR
- ⓕ4 FUEL TANK STORAGE

TOTAL AREA OF MODULE = 6,530 SF



**MODULE F :
FUEL SHOPS**



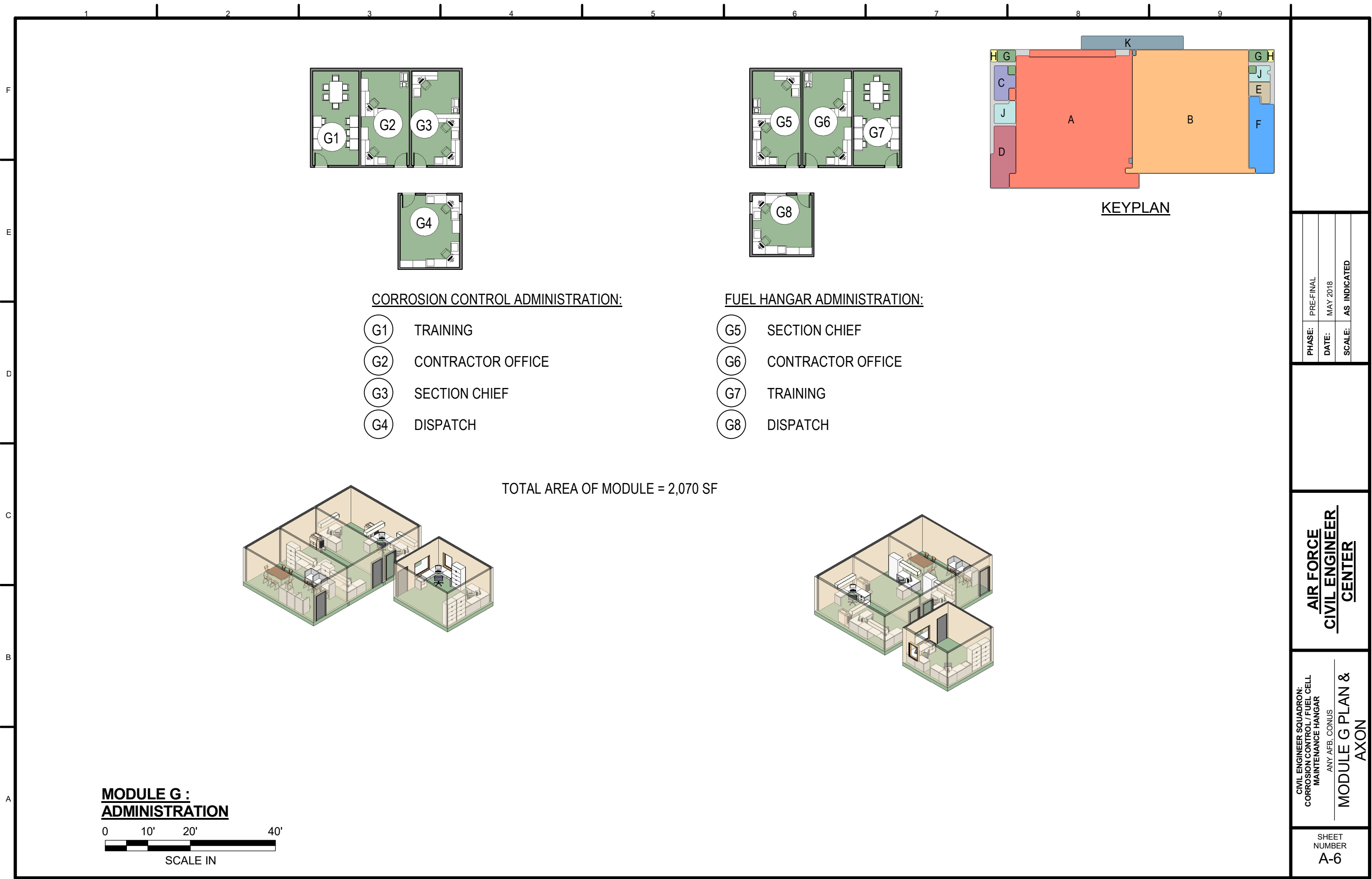
KEYPLAN

PHASE:	PRE-FINAL
DATE:	MAY 2018
SCALE:	AS INDICATED

**AIR FORCE
CIVIL ENGINEER
CENTER**

CIVIL ENGINEER SQUADRON:
CORROSION CONTROL / FUEL CELL
MAINTENANCE HANGAR
ANY AFB, CONUS
**MODULES E & F
PLANS & AXONS**

SHEET
NUMBER
A-5



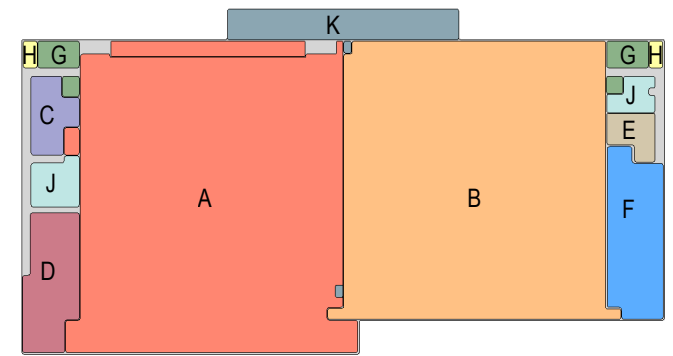
CORROSION CONTROL ADMINISTRATION:

- (G1) TRAINING
- (G2) CONTRACTOR OFFICE
- (G3) SECTION CHIEF
- (G4) DISPATCH

FUEL HANGAR ADMINISTRATION:

- (G5) SECTION CHIEF
- (G6) CONTRACTOR OFFICE
- (G7) TRAINING
- (G8) DISPATCH

TOTAL AREA OF MODULE = 2,070 SF



KEYPLAN

**MODULE G :
ADMINISTRATION**

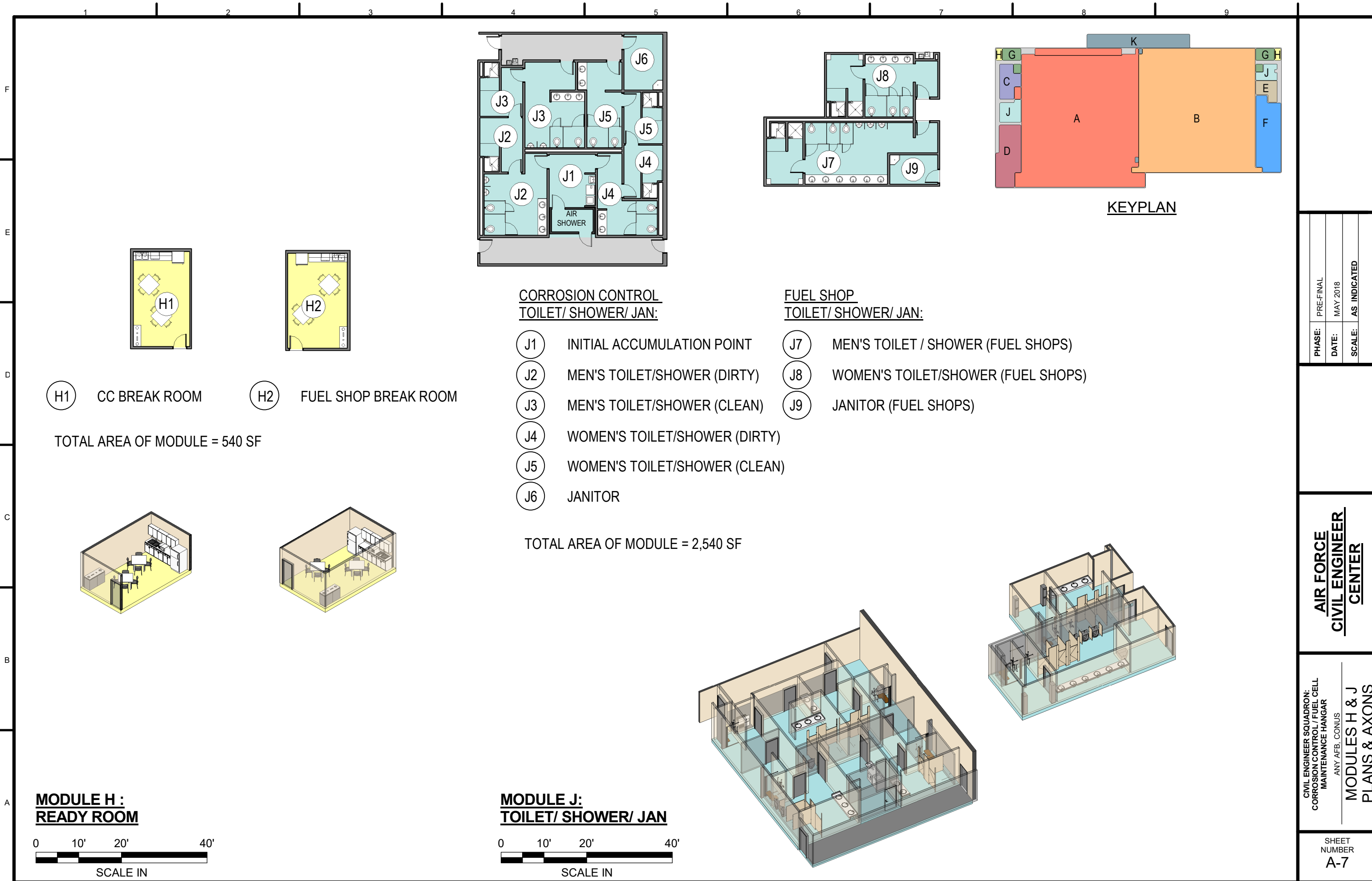


PHASE:	PRE-FINAL
DATE:	MAY 2018
SCALE:	AS INDICATED

**AIR FORCE
CIVIL ENGINEER
CENTER**

CIVIL ENGINEER SQUADRON:
CORROSION CONTROL / FUEL CELL
MAINTENANCE HANGAR
ANY AFB, CONUS
**MODULE G PLAN &
AXON**

SHEET
NUMBER
A-6



H1 CC BREAK ROOM

H2 FUEL SHOP BREAK ROOM

TOTAL AREA OF MODULE = 540 SF

**CORROSION CONTROL
TOILET/ SHOWER/ JAN:**

- J1 INITIAL ACCUMULATION POINT
- J2 MEN'S TOILET/SHOWER (DIRTY)
- J3 MEN'S TOILET/SHOWER (CLEAN)
- J4 WOMEN'S TOILET/SHOWER (DIRTY)
- J5 WOMEN'S TOILET/SHOWER (CLEAN)
- J6 JANITOR

**FUEL SHOP
TOILET/ SHOWER/ JAN:**

- J7 MEN'S TOILET / SHOWER (FUEL SHOPS)
- J8 WOMEN'S TOILET/SHOWER (FUEL SHOPS)
- J9 JANITOR (FUEL SHOPS)

TOTAL AREA OF MODULE = 2,540 SF

**MODULE H :
READY ROOM**



**MODULE J:
TOILET/ SHOWER/ JAN**



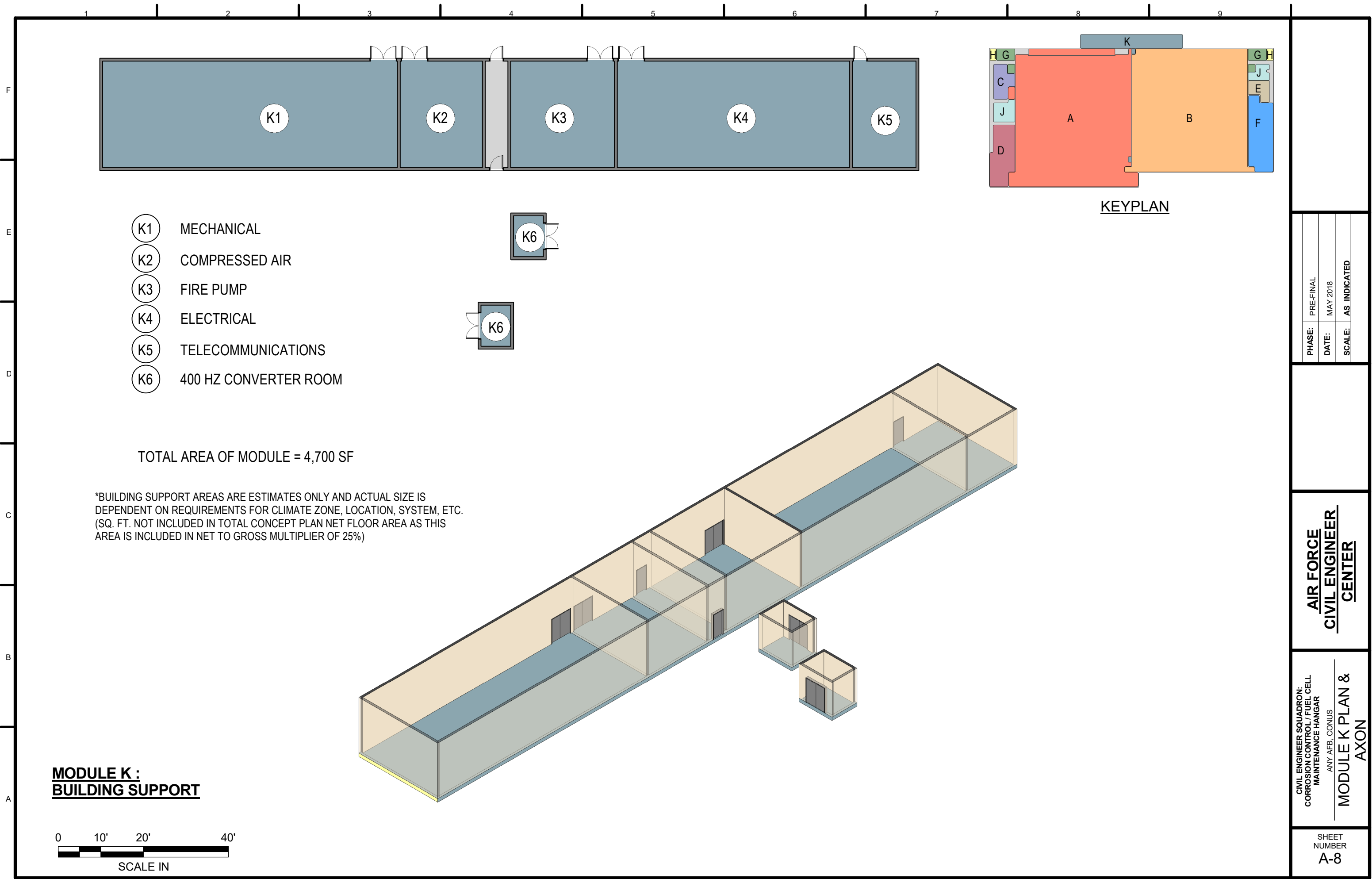
KEYPLAN

PHASE:	PRE-FINAL
DATE:	MAY 2018
SCALE:	AS INDICATED

**AIR FORCE
CIVIL ENGINEER
CENTER**

CIVIL ENGINEER SQUADRON:
CORROSION CONTROL / FUEL CELL
MAINTENANCE HANGAR
ANY AFB, CONUS
**MODULES H & J
PLANS & AXONS**

SHEET
NUMBER
A-7

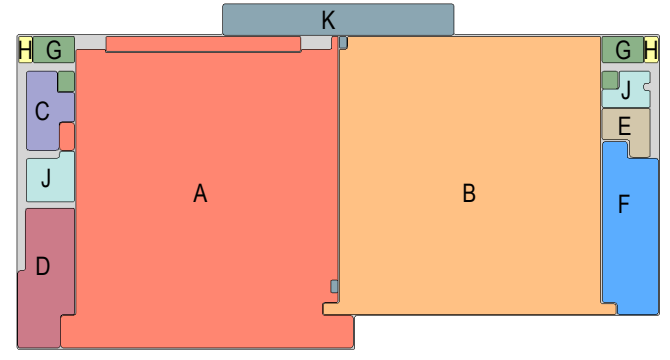


- (K1) MECHANICAL
- (K2) COMPRESSED AIR
- (K3) FIRE PUMP
- (K4) ELECTRICAL
- (K5) TELECOMMUNICATIONS
- (K6) 400 HZ CONVERTER ROOM

TOTAL AREA OF MODULE = 4,700 SF

*BUILDING SUPPORT AREAS ARE ESTIMATES ONLY AND ACTUAL SIZE IS DEPENDENT ON REQUIREMENTS FOR CLIMATE ZONE, LOCATION, SYSTEM, ETC. (SQ. FT. NOT INCLUDED IN TOTAL CONCEPT PLAN NET FLOOR AREA AS THIS AREA IS INCLUDED IN NET TO GROSS MULTIPLIER OF 25%)

**MODULE K:
BUILDING SUPPORT**



KEYPLAN

PHASE:	PRE-FINAL
DATE:	MAY 2018
SCALE:	AS INDICATED

**AIR FORCE
CIVIL ENGINEER
CENTER**

CIVIL ENGINEER SQUADRON:
CORROSION CONTROL / FUEL CELL
MAINTENANCE HANGAR
ANY AFB, CONUS
**MODULE K PLAN &
AXON**

SHEET
NUMBER
A-8