

STANDARD DESIGN

DRAFT

AIR FORCE

FIGHTER HANGAR / AMU FACILITY



TABLE OF CONTENTS

Chapter 1 Introduction

- 1.1 Standard Design
- 1.2 Air Force Standard Design Policy
 - 1.2.A Required use of Standard Designs
 - 1.2.B Integration with Air Force Corporate and Installation Facility Standards
- 1.3 Applicability
 - 1.3.A. Additions and Alterations

Chapter 2 Facility Design

- 2.1 Facility Description
 - 2.1.A Function
 - 2.1.B Typical Users
 - 2.1.C Related AFMAN 32-1084 Category Code
- 2.2 Criteria
 - 2.2.A Sustainability
 - 2.2.B Security and Antiterrorism
- 2.3 Notional Site
 - 2.3.A Site Location, Orientation and Adjacencies
 - 2.3.B Parking
 - 2.3.C Vehicular and Pedestrian Circulation
 - 2.3.D Notional Site Plan
- 2.4 Building Design
 - 2.4.A General Considerations
 - 2.4.B Building Configuration
 - 2.4.C Interior/Exterior Relationships
 - 2.4.D Functional Area Requirements
 - 2.4.E Room Data Sheets
 - 2.4.F Floor Plan
 - 2.4.G Interactive Programming Worksheet

CHAPTER 1 INTRODUCTION

1.1. STANDARD DESIGN

Standard Designs provide functional and spatial requirements for specific Air Force facility types, and are intended for use in conjunction with DoD Unified Facilities Criteria (UFC), Air Force Corporate Facility Standards, Installation Facility Standards, and other applicable standards.

Standard Designs are living documents that are periodically reviewed, updated, and made available to users by posting on the Whole Building Design Guide. This Standard Design, as well as those for many other Air Force facilities, can be accessed at this web site: <http://wbdg.org/ffc/af-afcec/prototypes-standard-designs>

This Standard Design is effective upon issuance and is distributed only in electronic media.

1.2 AIR FORCE STANDARD DESIGN POLICY

1.2.A. Required use of Standard Designs

The use of Air Force Corporate Facilities Standards (AFCFS), Installation Facility Standards (IFS) and Standard Designs has been codified in the most recent version of AFI 32-1023, *Designing and Constructing Military Construction Projects* (ref (c)). In compliance with the AFI, all facility designs must conform to the standards outlined and specified in the AFCFS, and if there is an applicable Installation Facilities Standards (IFS) document, the project must conform to those standards as well.

This Standard Design was developed in close coordination with the facility's functional users to by determine personnel counts, allowable/authorized space/room sizes, adjacency diagrams between the functional spaces and the overall facility space requirements. It also addresses special requirements unique to this facility type. Use this Standard Design in conjunction with other AF policy and regulations such as AFI's, and UFC's when programming and designing this facility type.

1.2.B. Integration with Air Force Corporate and Installation Facility Standards

The Air Force Corporate Facilities Standards (AFCFS), is an enterprise-wide program of facility standards establishing an acceptable level of quality and performance for facility design, facility operations and ongoing building maintenance. The AFCFS provides an exciting direction forward; intended to create sustainable installations and cohesive, efficient, High Performance and Sustainable Buildings throughout the Air Force.

Installation Facilities Standards (IFS) are part of the Air Force Corporate Facilities Standards (AFCFS) program to assist bases in implementing facilities standards at the local level. Bases develop and maintain an IFS, which replaces the Architectural Compatibility Plan, as a component plan of the Installation Development Plan (IDP).

Programmers and designers for Fighter Hangar/ AMU Facilities must use this Standard Design to ensure the specific functional, spatial, and special requirements are met, meet the local requirements established by the IFS, and the overall Air Force requirements set forth in the AFCFS.

1.3 APPLICABILITY

This Standard Design provides requirements for evaluating, planning, programming, and designing a Fighter Hangar/ AMU Facility that supports the mission, is appropriately sized, flexible, durable, and life-cycle cost efficient. The information in this Standard Design applies to the design of all new construction projects, to include additions, alterations, and renovation projects worldwide. It also applies to the procurement of Design Build services for the above-noted projects. Alteration and renovation projects should update existing facilities to meet the guidance and criteria within budgetary constraints.

The facility size is dependent on the number of aircraft to be serviced/docked in the hangar as well as number of administrative personnel . Use the Interactive Programming Worksheet to assist in these adjustments.

1.3. A. Additions and Alterations

For additions and alterations to existing facilities, use the adjacencies, sizing/scope and detailed requirements contained in the site diagrams, module drawings, and room data sheets to the maximum extent possible. The functionality and adjacency of the modules are still valid, but may require some manipulation to fit into existing spaces. This standard may be modified slightly to accommodate the existing structure. Remove non-structural walls to the greatest extent possible to open up space in the existing facilities to make them more receptive to the placement of the modules. The planner and designer must determine the most efficient means to balance the placement of modules within existing spaces or as a facility addition.

CHAPTER 2 FACILITY DESIGN

2.1 FACILITY DESCRIPTION

2.1.A. Function

The primary function of this Fighter Hangar/AMU Facility is to provide a facility that fully supports the mission with a flexible state-of-the-art building. The facility supports weapons systems and communications technology within a standalone facility. The facility is comprised of hangar bay and Administrative/Support areas. Fighter Hangar/AMU Facility Facilities will consist of but are not limited to grouped rooms or “Modules”. The modules needed for this facility are as follows (included rooms are noted below module title):

Area Modules

- Hangar Bay
 - Hangar Bay with 6 Fighter positions
- Administration Area
 - Training
 - Specialist Section Chief
 - Weapons Section Chief
 - AOIC/ NCOIC
 - ALIS Terminals
 - ALIS Administration
 - AMU Programming
 - Contractor Open Office
 - Crew Chiefs Office 1
 - Crew Chiefs Office 2
 - AFETS
 - Contractor Office
 - Conference
 - OIC / Chief
 - Debrief
 - Secure Storage
 - SEC Vault
 - Production
- Propulsion Shop
 - Propulsion Shop
 - Propulsion Shop Office
- Ready Room
 - Ready Room
 - Break Room
 - Storage
 - Maintenance Debrief

- Tool & Parts Support
 - Tool Room
 - Tool Issue
 - Collateral Storage
 - Hazmat
 - Battery Charging
 - Battery Storage
 - Shop Office
 - TNB/FOM
- AME Storage
- Wheel & Tire Shop
 - Wheel & Tire Shop
 - Office
- Egress Shop
 - Egress Storage
 - CAD/PAD
 - Egress Maintenance
 - Egress Support CTK
 - Administration / Ready Room
- Toilet, Shower, Locker
 - Men's Toilet/ Shower/ Locker
 - Women's Toilet/ Shower/ Locker
 - Men's Toilet
 - Women's Toilet
 - Janitor
- Building Support
 - Main Mechanical
 - Main Electrical
 - Main Telecommunications
 - Fire Pump
 - Secondary Mechanical
 - Secondary Electrical
 - Secondary Telecommunications

AFCFS: Consult the Air Force Corporate Facilities Standards (AFCFS) to determine quality standards for this facility group. This standard facility prototype is considered a Group 3 hierarchy.

2.1.B. Typical Users

This facility is operated by active duty, guard, and reserve military personnel as well as civilian contractor representatives of the systems providers as well as USAF Civilian Federal Workforce.

Hours of operation for this facility type are user driven and vary up to two shifts, approximately 30 personnel per shift.

2.1.C. Related AFMAN 32-1084 Category Code

The related AFMAN 32-1084 Category Codes are as follows: This facility would be governed by Chapter 3, Facility Class 2, Maintenance Facilities, Category Group 21, Maintenance Facilities and Chapter 6, Facility Class 6, Administrative, Category Group 61, Administrative and Administrative Support Spaces.

2.2 CRITERIA

APPLICABLE UNIFIED FACILITY CRITERIA

Comply with UFC 1-200-01, DoD Building Code (General Building Requirements). UFC 1-200-01 provides applicability of model building codes and government unique criteria for typical design disciplines and building systems, as well as for accessibility, antiterrorism, security, high performance and sustainability requirements, and safety. Use this Standard Design in addition to UFC 1-200-01 and the UFCs and government criteria referenced therein. UFC 1-200-01 references other "Core UFCs" that are applicable to this Standard Design as well as most all DoD facilities.

UFC 1-200-01	DoD Building Code (General Building Requirements)
UFC 1-200-02	High Performance and Sustainability Building Requirements
UFC 1-300-07A	Design Build Technical Requirements
UFC 3-101-01	Architecture
UFC 3-110-03	Roofing
UFC 3-120-01	Design: Sign Standards
UFC 3-120-10	Interior Design
UFC 3-190-06	Protective Coatings and Paints
UFC 3-201-01	Civil Engineering
UFC 3-201-02	Landscape Architecture
UFC 3-210-10	Low Impact Development
UFC 3-220-01	Geotechnical Engineering
UFC 3-230-01	Water Storage, Distribution, and Transmission

UFC 3-240-01	Wastewater Collection
UFC 3-250-01	Pavement Design for Roads and Parking Areas
UFC 3-250-04	Standard Practice for Concrete Pavements
UFC 3-260-01	Airfield and Heliport Planning and Design
UFC 3-260-02	Pavement Design for Airfields
UFC 3-260-17	Dust Control for Roads, Airfields, and Adjacent Areas
UFC 3-301-01	Design: Structural Engineering
UFC 3-400-02	Design: Engineering Weather Data
UFC 3-401-01	Mechanical Engineering
UFC 3-410-01	Heating, Ventilation, and Air Conditioning Systems
UFC 3-410-02	Lonworks Direct Digital Control for HVAC and Other Local Building Systems
UFC 3-420-01	Plumbing Systems
UFC 3-450-01	Noise and Vibration Control
UFC 3-501-01	Electrical Engineering
UFC 3-520-01	Interior Electrical Systems,
UFC 3-530-01	Design: Interior and Exterior Lighting and Controls,
UFC 3-550-01	Exterior Electrical Power Distribution
UFC 3-570-01	Cathodic Protection
UFC 3-575-01	Lightning and Static Electricity Protection Systems
UFC 3-580-01	Telecommunications Building Cabling Systems Planning and Design
UFC 3-600-01	Fire Protection Engineering for Facilities
UFC 4-010-01	DoD Minimum Antiterrorism Standards for Buildings
UFC 4-010-05	Sensitive Compartmented Information Facilities Planning, Design, and Construction.
UFC 4-020-01	Security Engineering Facilities Planning Manual

UFC 4-021-01	Design and O&M: Mass Notification Systems
UFC 4-010-06	Cybersecurity of Facility-Related Control Systems
UFC 4-022-03	Security Fences and Gates
UFC 4-023-03	Design of Buildings to Resist Progressive Collapse
UFC 4-211-01	Aircraft Maintenance Hangars
USGBC LEED-NC	LEED for New Construction and Major Renovations Rating System (U.S. Green Building Council)

2.2.A. Sustainability

Comply with the Federal sustainability requirements as detailed in UFC 1-200-02, High Performance and Sustainable Building Requirements. Determine third-party certification requirements based on Table 1-1 of UFC 1-200-02 and current AF guidance at <https://www.wbdg.org/ffc/af-afcec>.

2.2.B. Security and Antiterrorism

The facility must meet, UFC 4-020-01 Security Engineering Facilities Planning Manual, UFC 04-010-01 DoD Minimum Antiterrorism Standards for Buildings, Change 1, UFC 4-010-05 Sensitive Compartmented Information Facilities Planning, Design, and Construction and ICD/ICS 705 Technical Specifications for Construction and Management of Sensitive Compartmented Information Facilities. Internal security measures include designated 'non-secure' and 'secure' areas within the building with access to secure areas controlled and monitored by special access hardware, Intrusion Detection Systems and Closed-Circuit Television Systems (CCTV). Exterior security measures will include antiterrorism stand-off distances for parking, controlled vehicular circulation, appropriately located trash enclosures, clear space surrounding the facility, and the single point of building entry.

2.3 NOTIONAL SITE

2.3.A. Site Location, Orientation and Adjacencies

The notional site plan diagram demonstrates key site development criteria. It is not a site-specific solution. The information represents the land requirements to construct this facility and includes associated AT standoff and parking. Additional land may be needed to comply with the stormwater management requirements of UFC 3-210-10 Low Impact Development. Utilization of existing or shared parking is allowable and may reduce the total acreage required for the facility. Adapt the requirements to the specific site and location and comply with the applicable Installation Development Plan (IDP) and Area Development Plan (ADP) for facility siting.

Several factors determine the most appropriate and cost-effective location for a facility. The availability and capacity of required utilities and the mass/scale of the facility relative to adjacent structures and noise issues must be analyzed.

Emphasis must be placed on operation, function, and safety when siting the facility. The preferred location for this facility is immediately adjacent to the flight line or in 'close proximity'. Analyze and comply with airfield clearances, building setback restrictions, and line of sight restrictions from the adjacent flight-line.

The approximate project area required for the Fighter Hangar/AMU Facility is 8.0 acres, which includes antiterrorism/force protection standoff and parking. Utilization of existing or shared parking is allowable and may reduce the total acreage required for the facility.

2.3.B. Parking

Parking will be as required by the programming documents, but at a minimum must be provided to accommodate 40 percent of the largest shift of assigned personnel.

2.3.C. Vehicular and Pedestrian Circulation

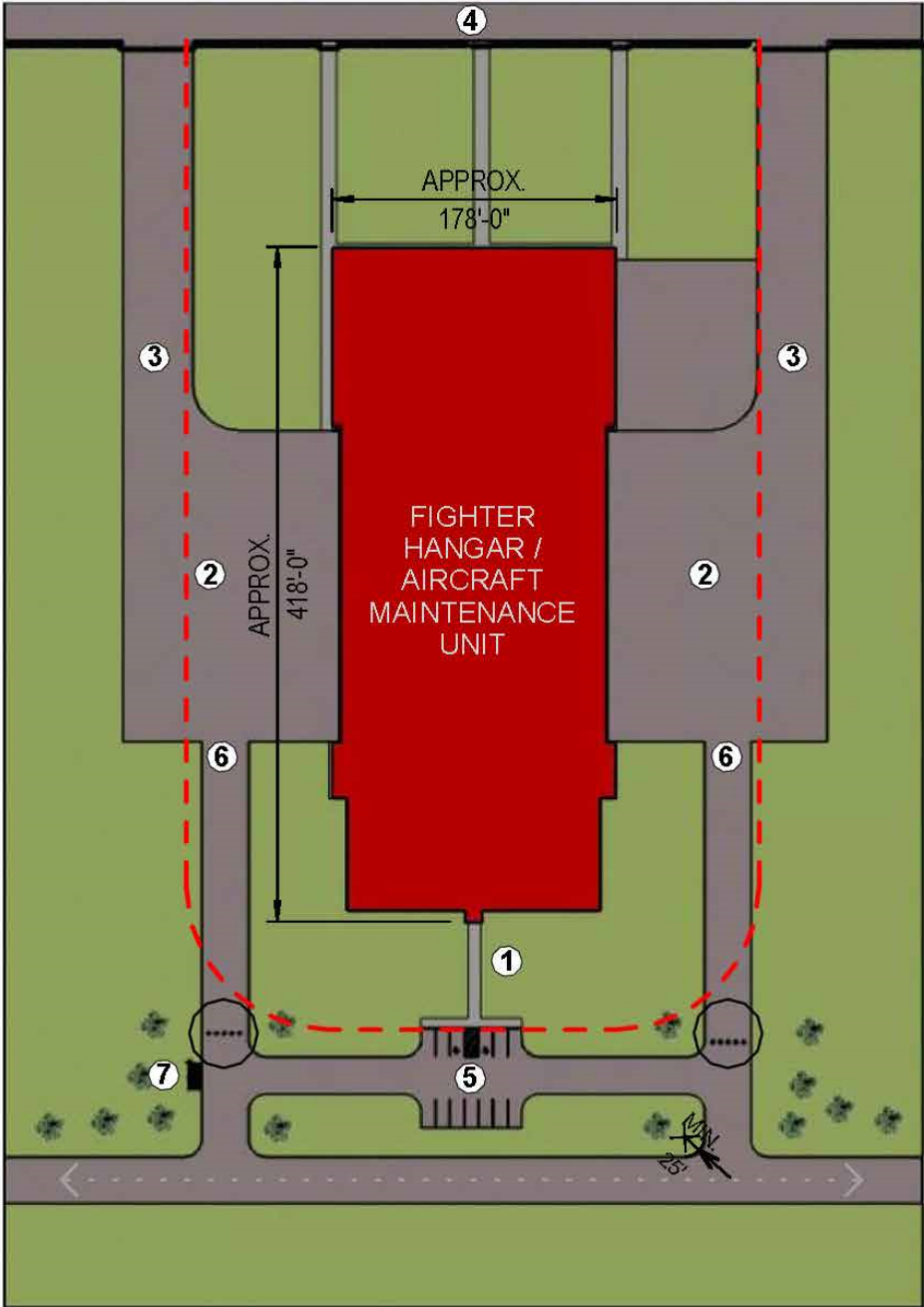
Convenient and safe vehicular access and circulation must be provided for personal vehicles and essential services, including operations, maintenance, deliveries, dumpster /recycling collection, and emergency services.

Locate sidewalk networks to provide convenient and safe pedestrian circulation from existing circulation elements of the project site to the new parking areas and doors of the facility. Sidewalk width must accommodate maintenance and emergency services requirements.

2.3.D. Notional Site Plan

See Next Page for Image

2.4 BUILDING DESIGN



NOTES:

- ① PRIMARY BUILDING ENTRY
- ② HANGAR ACCESS APRON
- ③ HANGAR ACCESS TOWWAY
- ④ FLIGHT LINE ACCESS
- ⑤ POV PARKING LOT - 12 SPACES
- ⑥ SERVICE DRIVE
- ⑦ DUMPSTER / RECYCLING SCREENED ENCLOSURE

LEGEND:

- - - CONCEPTUAL AT SETBACK (REFERENCE UFC 4-010-01)
- < - - - > ACCESS STREET
- CONTROLLED VEHICLE ACCESS

2.4.A. General Considerations

General considerations of the facility design are centered on:

- The Hangar Bay and the associated Administration and Shop Support areas.
- The functional relationships between the modules as well as within the modules
- The general personnel flow requirements within the facility.

Daily shift personnel enter the facility from the land side of the building and continue to the air side or Flight Line area of the building.

The Building Support Module needs exterior access.

Other general considerations include:

- The size of the hangar bay shall be affected by the number, type and size of the mission aircraft as well as practical structural spans and hangar door configurations.

2.4.B. Building Configuration

The building should be configured for future expansion or reconfiguration. The general size of the building is based on the number, type and size of the mission aircraft required. The general configuration of the building is a linear type configuration with the Administrative/Support located on the land side and the Hangar and shop areas are located on the air side or Flight Line. The size of the following module is affected by the type, number and size of the mission aircraft:

- Hangar Bay

2.4.C. Interior/Exterior Relationships

The Land Side of the Facility will have access to POV and Visitor parking. There will be a single point of entry to facility on flight line to accommodate mission of the modules and a single point of entry to the on the Land Side area for the facility.

2.4.D. Functional Area Requirements

Facility Modules Adjacency Diagrams & Conceptual Axonometric Layout(s)

The composite diagram(s) represent ways to conceptually assemble the functional areas (modules) into a cohesive whole. Individual modules are represented by different colors.

Spaces and rooms that are integrally related with a specific functional connection or operational flow are grouped into a module. Modules and the associated room data sheets identify specific criteria and additional detail for each functional area of the facility as outlined in the Interactive Programming Sheet located at the end of the document.

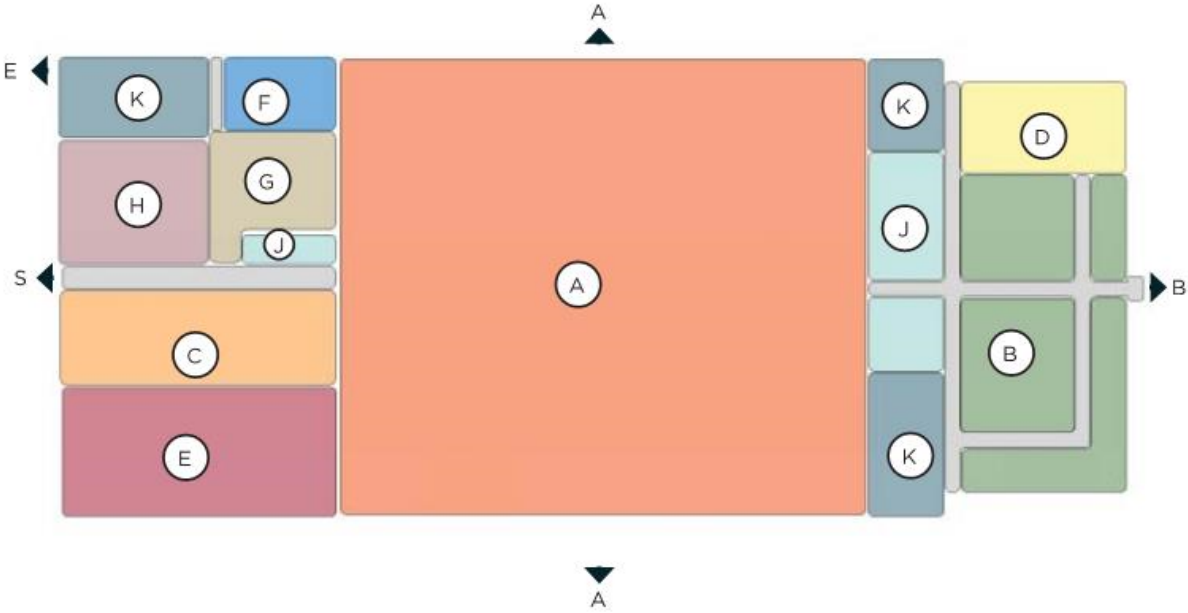
The modules are a grouping of functional spaces and represent “Lego blocks” to be used in a “kit-of-parts” design approach. Use the fixed modules as pre-assembled pieces of the facility “puzzle”. Assemble them to comply with the required adjacencies indicated in the diagrams and module plans.

Modules must be used as shown in this Standard Design to the greatest extent possible, and must not be deconstructed or altered except as indicated herein. The intent of the Standard Design criteria is to avoid manipulation of the composition, functional relationships, adjacencies, and module sizes. Modules contain fixed attributes and must not be changed arbitrarily. Modules may be rotated, flipped, and/or mirrored to accommodate an overall composition or site issue, but this must not be done arbitrarily and should occur only when necessary.

Some modules are linked to space requirements that increase or decrease in size based on the personnel count and equipment for a particular mission. In these cases, increase or decrease the size of the module to match the revised scope calculation. This may sometimes require minor adjustments in other adjacent modules so that they properly fit together to create a constructible facility floor plan. Spaces must comply with any critical dimensions indicated on module plans. Manipulate as few modules as possible to create a constructible facility. The resulting composite plan must respect the established modules adjacencies and must not exceed the authorized project scope.

Functional Adjacency Diagram

The following Functional Adjacency Diagram form the basis of design for the Standard Design Fighter Hangar/ AMU Facility for six Fighter Aircraft (F-15, F-16, F-22, F-35). The Facility is programed around the Hangar Bay Module (designed for six Fighter Aircraft) which is centrally located in the facility with direct access to the flight line with Tools, Parts & Support , Propulsion Shop, Wheel & Tire Shop, & AME Storage Modules. The Administration, Ready Room, Toilet/Shower/Locker Module, are located at one end of the Hangar Bay near Land Side and the Shop modules are concentrated at the other end of the Hangar Bay with direct access (and visual access) of the Flight Line. This Facility Adjacency Diagram as well as the modules is the Air Force approved Standard Design plan.



- (A) FACILITY MAINTENANCE
- (B) ADMINISTRATION
- (C) PROPULSION SHOP
- (D) BREAK ROOM
- (E) TOOL & PARTS SUPPORT
- (F) AME STORAGE
- (G) WHEEL & TIRE SHOP
- (H) EGRESS SHOP
- (J) TOILET, SHOWER, LOCKER
- (K) BUIDLING SUPPORT

- PRIMARY ADJACENCY
- PROXIMITY
- ←→ DIRECT ACCESS
- DIRECT VIEW
- ENCLOSED AREA
- ▶ **ENTRY / EXIT**
- A - AIRCRAFT ENTRY
- B - BUILDING ENTRY
- E - EQUIPMENT / SERVICE ENTRY
- P - PERSONNEL ENTRY
- S - SECONDARY ENTRY

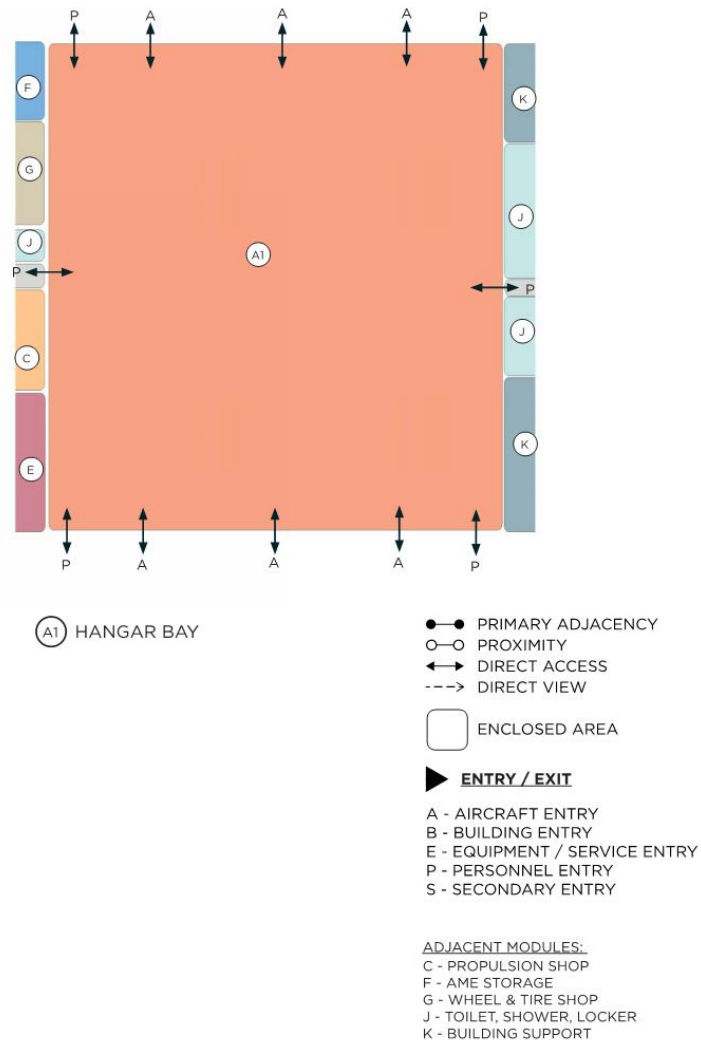
DRAWINGS NOT TO SCALE

MODULE A – HANGAR BAY MODULE

Function and Adjacency

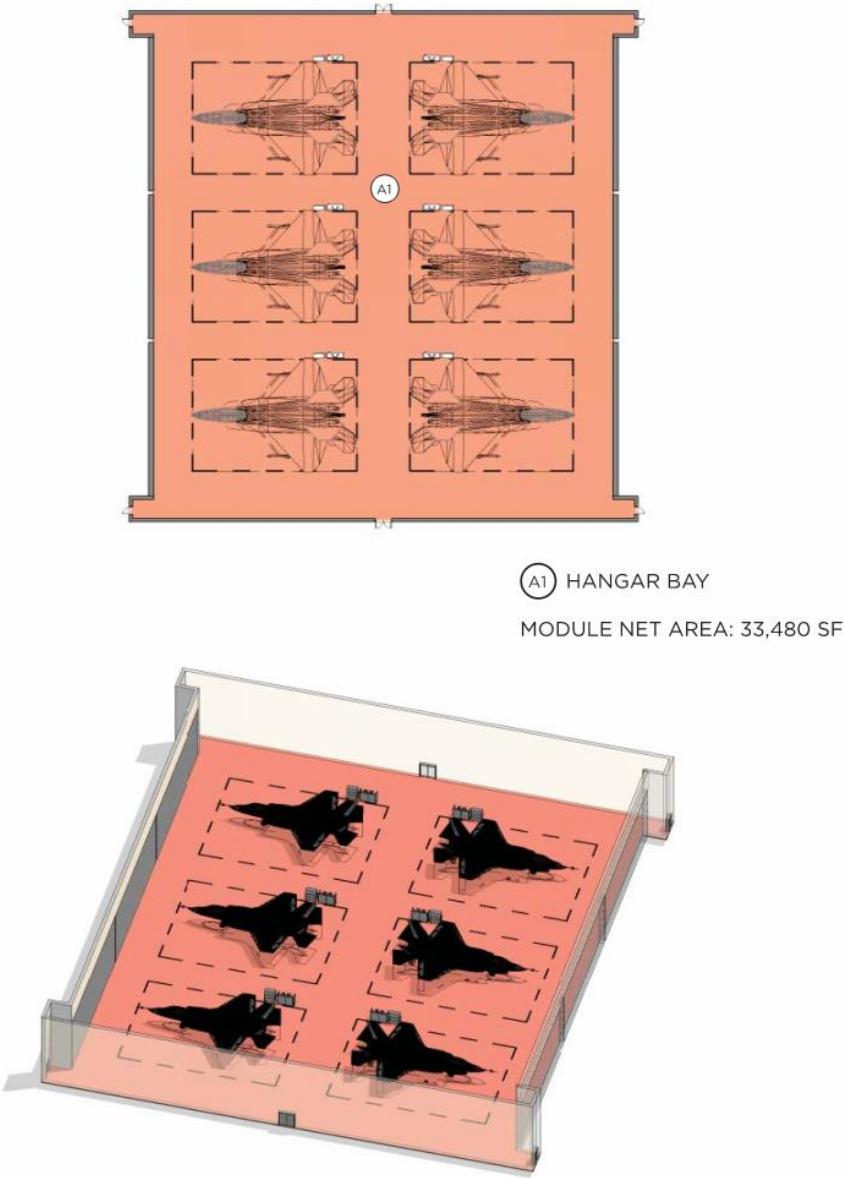
The Hangar Bay Module consists of a high bay space to accommodate six aircraft, with enough clearance between wingtips and tails to accommodate storage requirements as identified by fighter maintenance crews. The bay is designed to fit the designated fighter aircraft tail-to-tail, with the nose of the aircraft facing the hangar doors. The primary standard design is based on vertical lift fabric doors. Steel sliding hangar doors is another acceptable hangar door option. An alternate hangar bay configuration would be a linear concept where all aircraft fit into the hangar wing-to-wing with enough space as required at the aircraft tail for engine removal/replacement. This alternate configuration would fit a scenario where there is limited site area for a tail-to-tail configuration. The linear configuration is not the most desirable due to an increased hangar bay size to accommodate engine removal/replacement; in a tail-to-tail configuration this engine removal/replacement area is shared.

Figure 2-A.1 Module A Adjacency Diagram



Hangar Bay

Figure 2-A.2 Module A Floor Plan & Axonometric



DRAWINGS NOT TO SCALE

MODULE B – ADMINISTRATION

Function and Adjacency

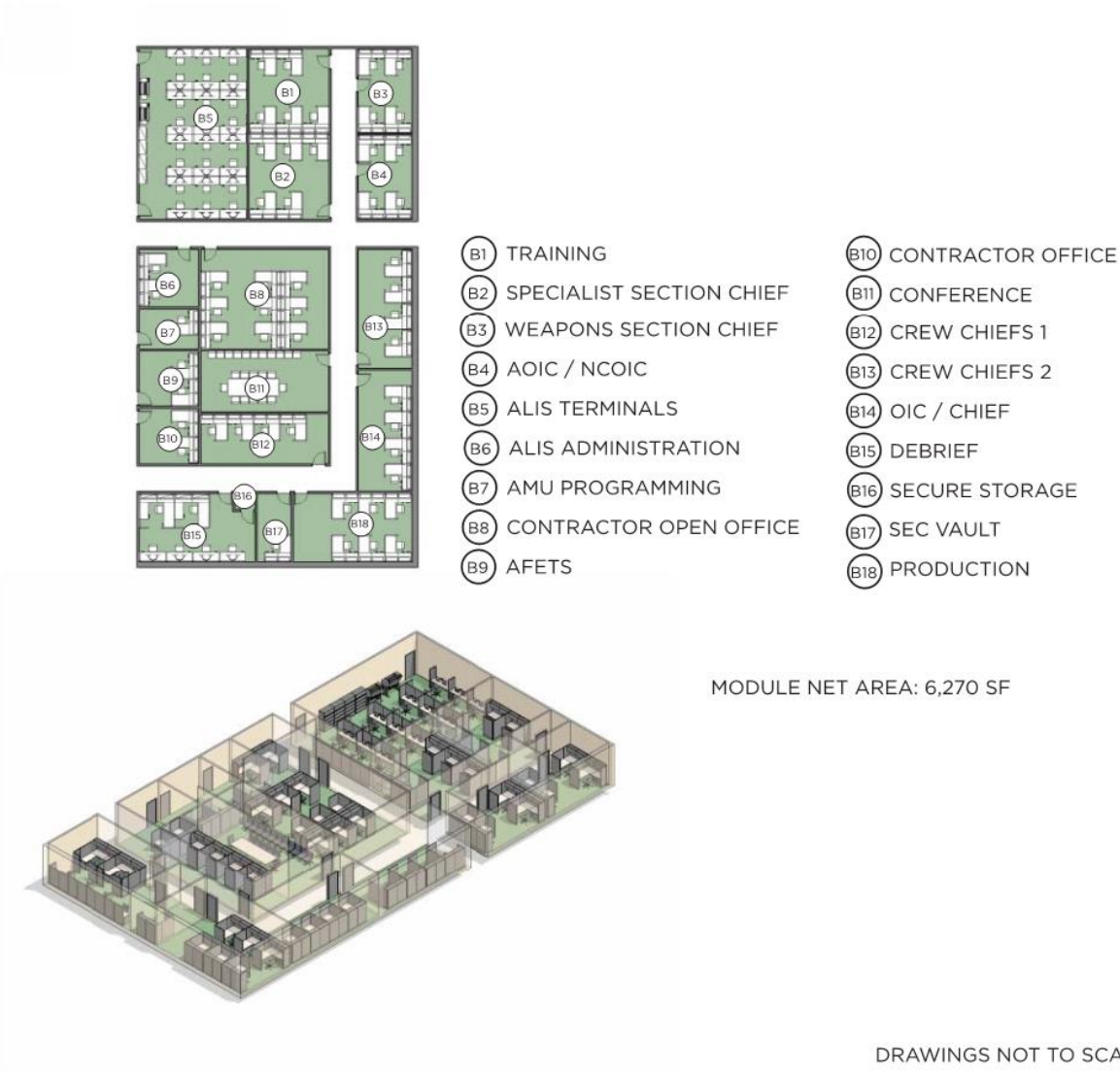
The Administration Module will be located on the land side of the facility. The module consists of the following office areas: Training, Specialist Section Chief, Weapons Section Chief, AOIC/NCOIC, ALIS Terminals, ALIS Administration, AMU Programming, Contractor Open office, Crew Chiefs, AFETS, Contractor Office, Conference, OIC/Chief, Debrief, Secure Storage, SEC Vault, and Production. This module serves the administrative needs of the AMU.

Figure 2-B.1 Module B Adjacency Diagram



Administration

Figure 2-B.2 Module B Floor Plan & Axonometric

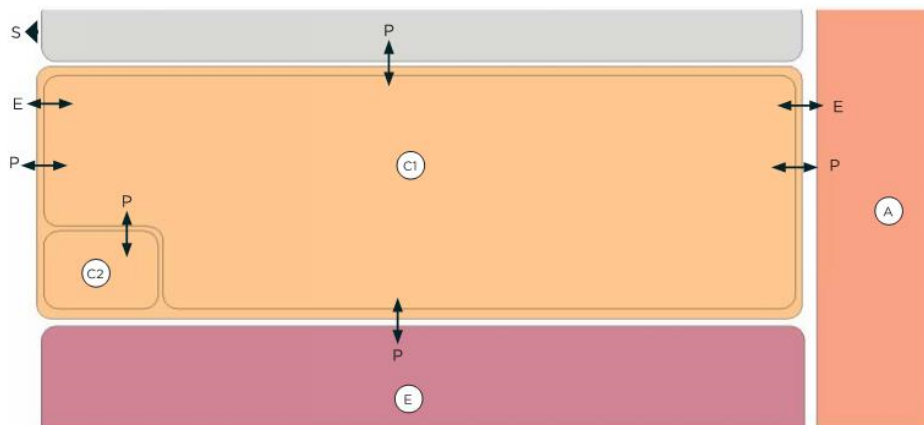


MODULE C – PROPULSION SHOP MODULE

Function and Adjacency

The Propulsion Shop Module consists of a large open area for propulsion (engines) equipment maintenance and a supervisor office. This Module provides space for unit-level off-engine maintenance of the aircraft propulsion system. This module must have direct access to the hangar bay as well as the flight line.

Figure 2-C.1 Module C Adjacency Diagram



- C1 PROPULSION SHOP
- C2 PROPULSION SHOP OFFICE

- PRIMARY ADJACENCY
- PROXIMITY
- ↔ DIRECT ACCESS
- > DIRECT VIEW

□ ENCLOSED AREA

▶ **ENTRY / EXIT**

- B - BUILDING ENTRY
- E - EQUIPMENT / SERVICE ENTRY
- P - PERSONNEL ENTRY
- S - SECONDARY ENTRY

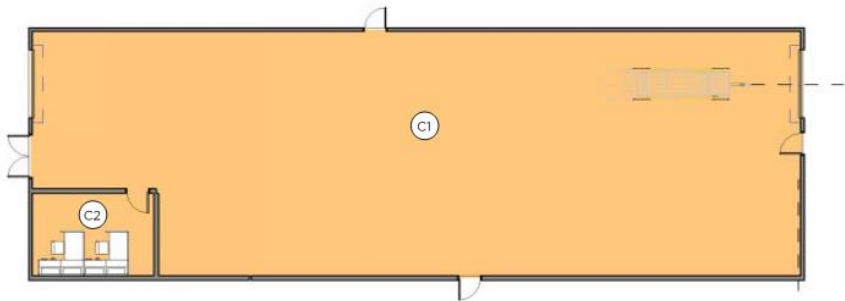
ADJACENT MODULES:

- A - HANGAR BAY
- E - TOOL & PARTS SUPPORT

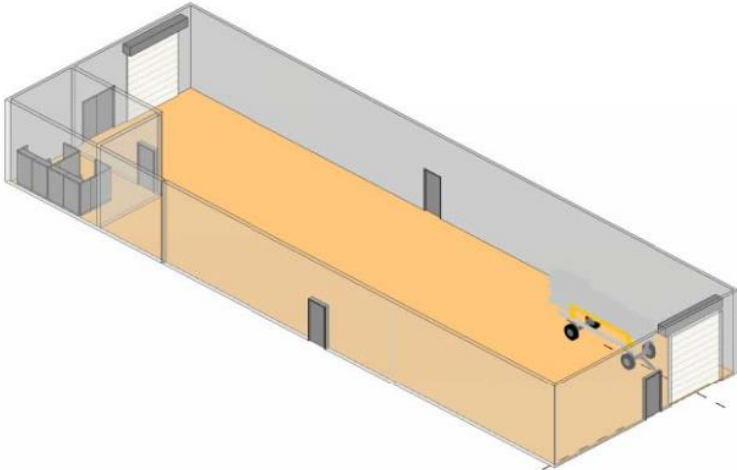
DRAWINGS NOT TO SCALE

Propulsion Shop

Figure 2-C.2 Module C Floor Plan & Axonometric



- ⓐ PROPULSION SHOP
 - ⓑ PROPULSION SHOP OFFICE
- MODULE NET AREA: 3,740 SF



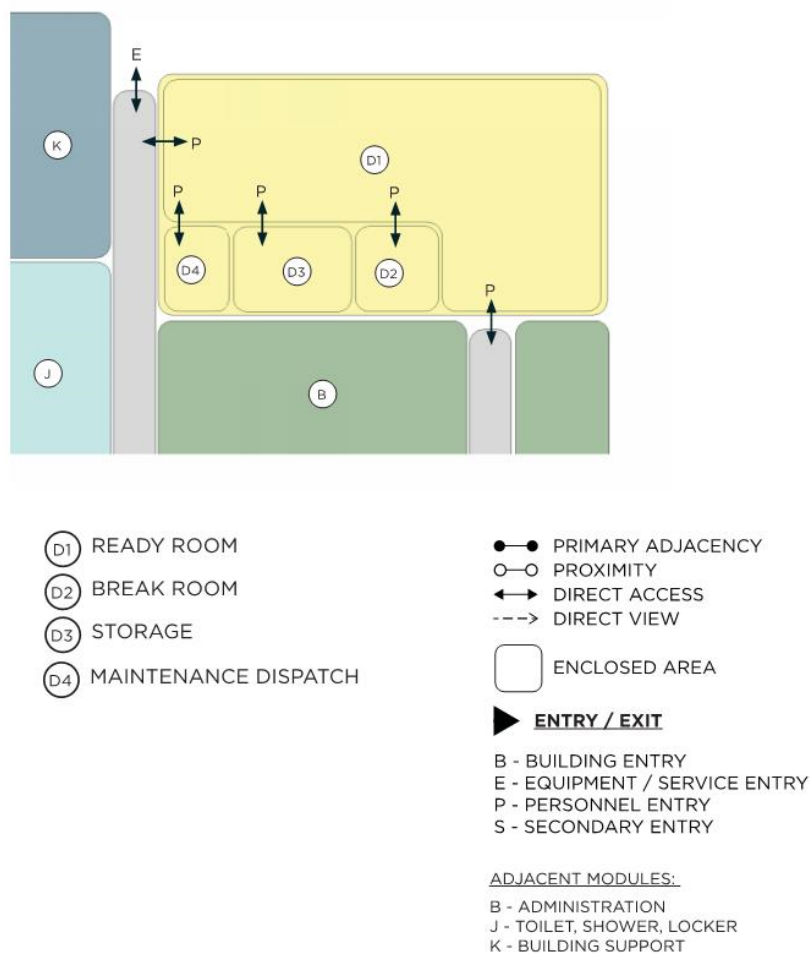
DRAWINGS NOT TO SCALE

MODULE D – READY ROOM

Function and Adjacency

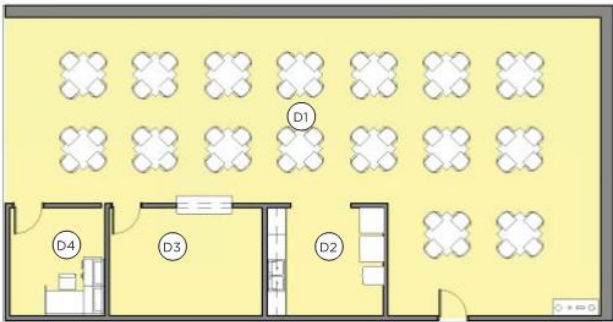
The Ready Room Module includes an open ready room with 16 four-person tables a Maintenance Dispatch Office, a storage room with a roll-up counter shutter to the ready room, and a break room/galley with a counter, microwaves, refrigerators, etc. The ready room is required to have a designated recycling area.

Figure 2-D.1 Module D Adjacency Diagram



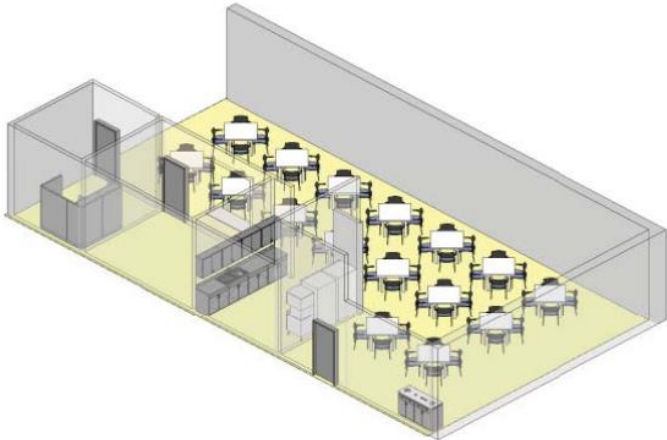
Ready Room

Figure 2-D.2 Module D Floor Plan & Axonometric



- (D1) READY ROOM
- (D2) BREAK ROOM
- (D3) STORAGE
- (D4) MAINTENANCE DISPATCH

MODULE NET AREA: 2,100 SF



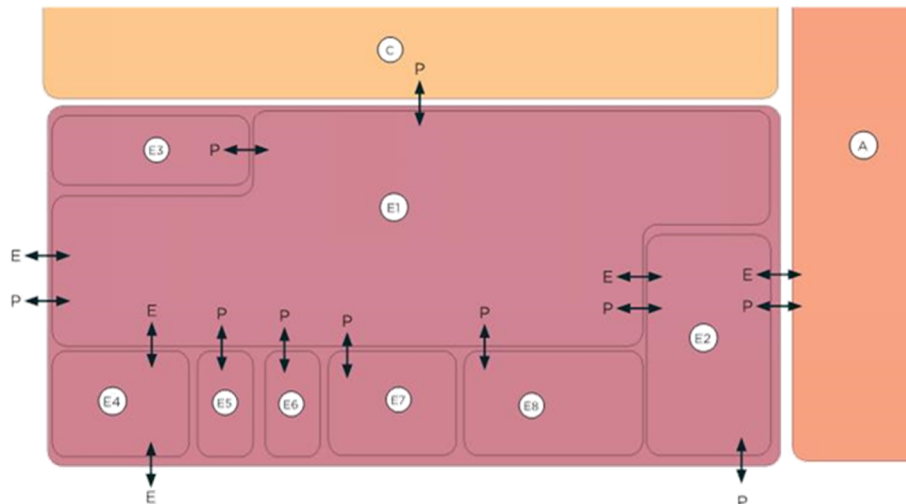
DRAWINGS NOT TO SCALE

MODULE E – TOOL AND PARTS SUPPORT

Function and Adjacency

The Tools and Parts Support Module includes a supply shop with a designated tool transaction space, a supply TNB/FOM room, a HAZMAT storage space, and a supply shop office supporting three to four personnel. The main function of this module is to store aircraft parts and tools for distribution to the maintenance crews. TNB/FOM will contain sensitive aircraft parts. The HAZMAT area is positioned so chemicals can exit the bay and not re-enter. This module must have direct access to the hangar bay as well as the flight line.

Figure 2-E.1 Module E Adjacency Diagram



- (E1) TOOL ROOM
- (E2) TOOL ISSUE
- (E3) SECURE VAULT
- (E4) HAZMAT
- (E5) BATTERY CHARGING
- (E6) BATTERY STORAGE
- (E7) SHOP OFFICE
- (E8) TNB/FOM

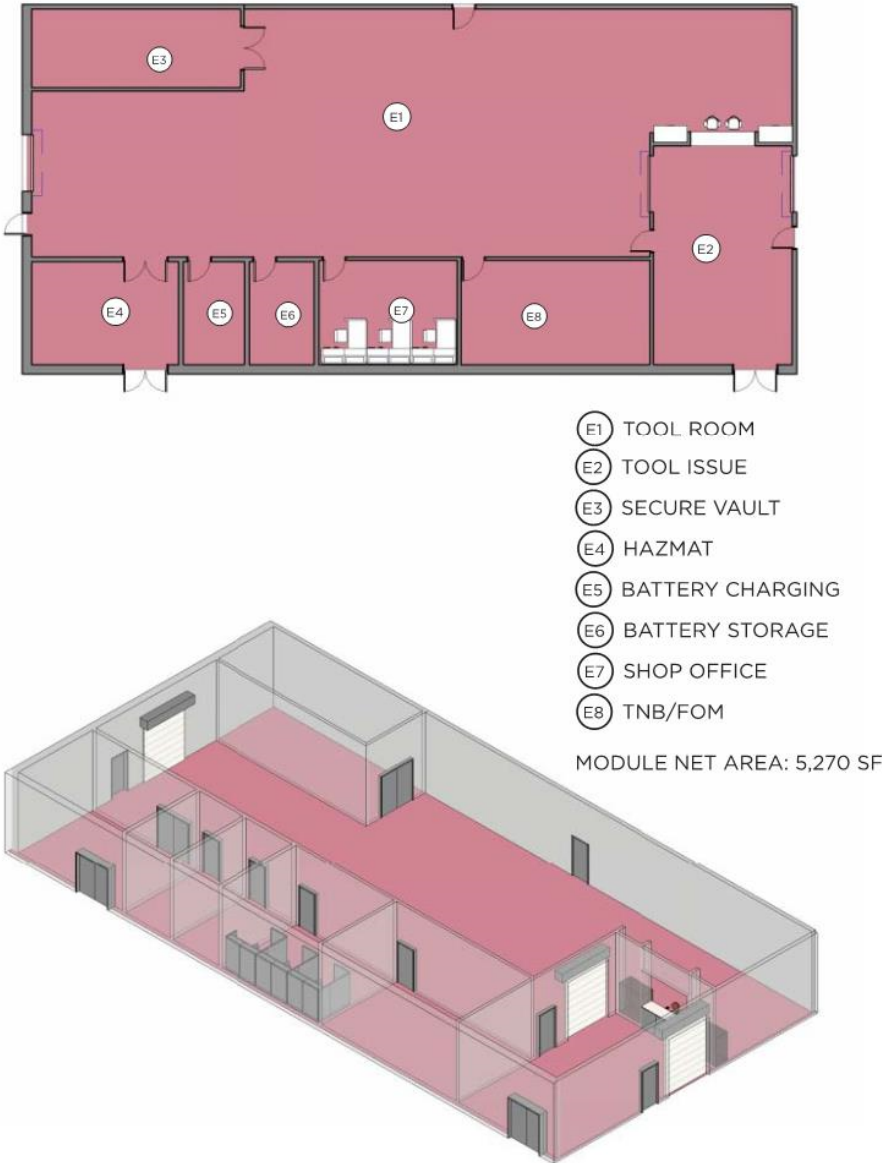
- PRIMARY ADJACENCY
- PROXIMITY
- ↔ DIRECT ACCESS
- > DIRECT VIEW
- ▭ ENCLOSED AREA
- ▭ OPEN AREA
- ▶ ENTRY / EXIT
- B - BUILDING ENTRY
- E - EQUIPMENT / SERVICE ENTRY
- P - PERSONNEL ENTRY
- S - SECONDARY ENTRY

ADJACENT MODULES:

- A - HANGAR BAY
- C - PROPULSION SHOP

Tool and Parts Support

Figure 2-E.2 Module E Floor Plan & Axonometric



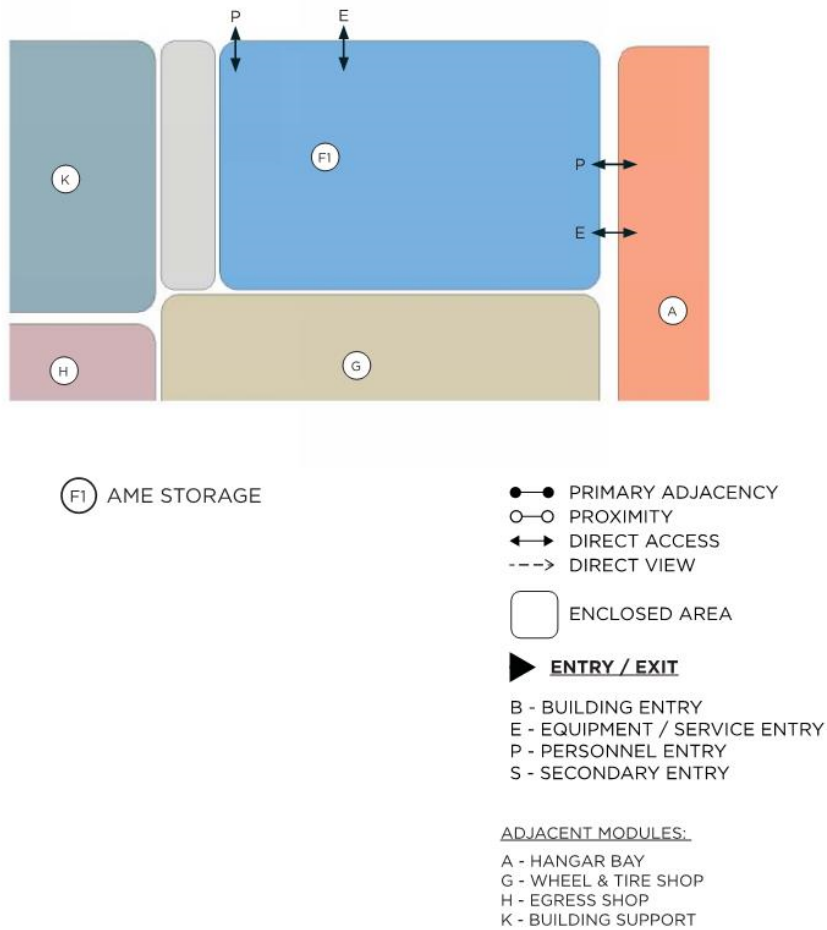
DRAWINGS NOT TO SCALE

MODULE F- AME STORAGE

Function and Adjacency

The AME Storage module includes an open area for storage and maintenance of AME (Alternate Mission Equipment) equipment/parts. This module must have direct access to the hangar bay as well as the flight line.

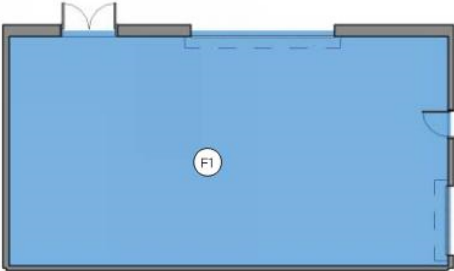
Figure 2-F.1 Module F Adjacency Diagram



DRAWINGS NOT TO SCALE

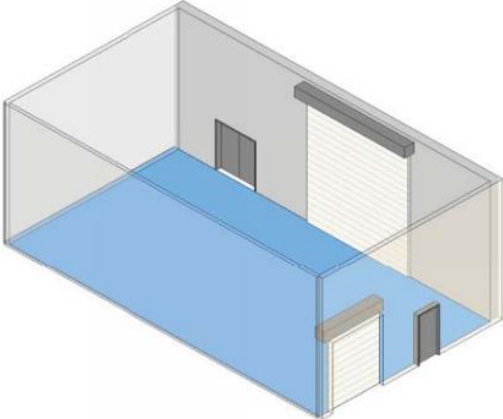
AME Storage

Figure 2-F.2 Module F Floor Plan & Axonometric



F1 AME STORAGE

MODULE NET AREA: 1,140 SF



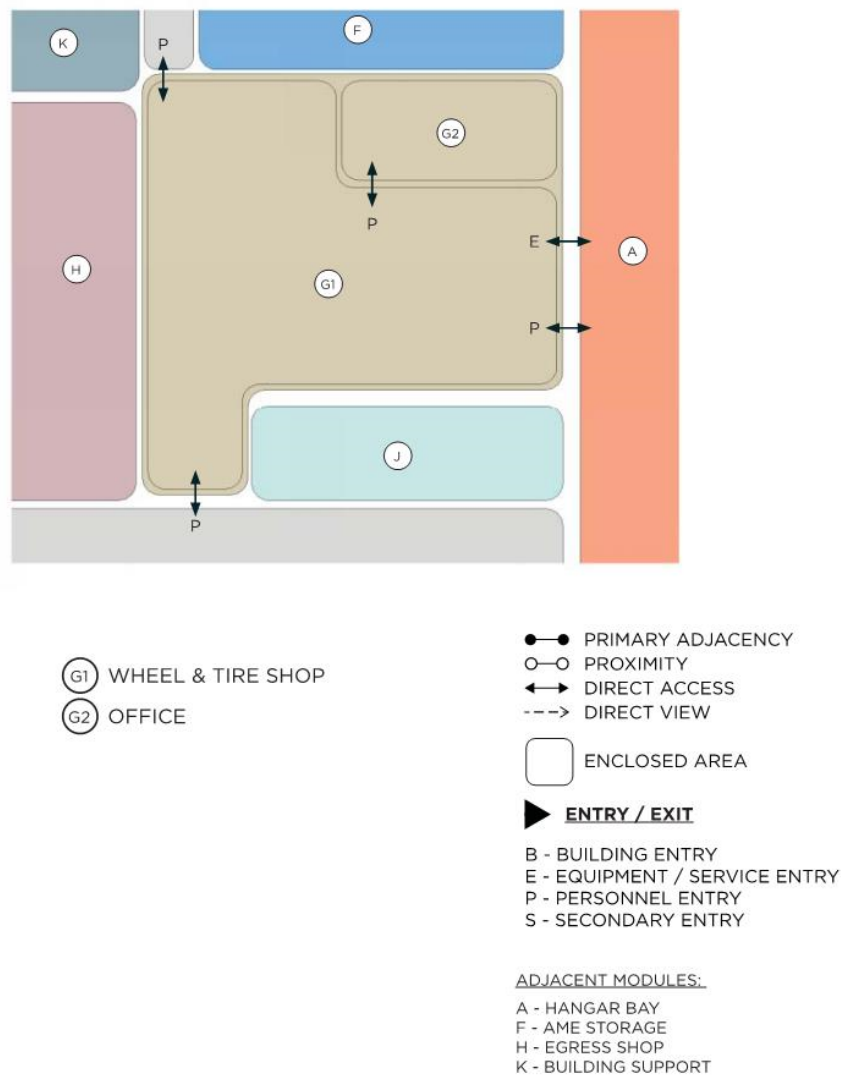
DRAWINGS NOT TO SCALE

MODULE G – WHEEL AND TIRE SHOP MODULE

Function and Adjacency

The Wheel and Tire Shop Module consists of the Wheel and Tire Shop with an open layout and an office supporting three to four personnel. Space accommodations include areas for bead breaking, parts cleaning, bearing, and inflation. This module must have direct access to the hangar bay. An enlarged corridor will provide equipment access to the exterior / flight line when this module cannot be placed on a flight line exterior wall.

Figure 2-G.1 Module G Adjacency Diagram



DRAWINGS NOT TO SCALE

Wheel and Tire Shop

Figure 2-G.2 Module G Floor Plan & Axonometric



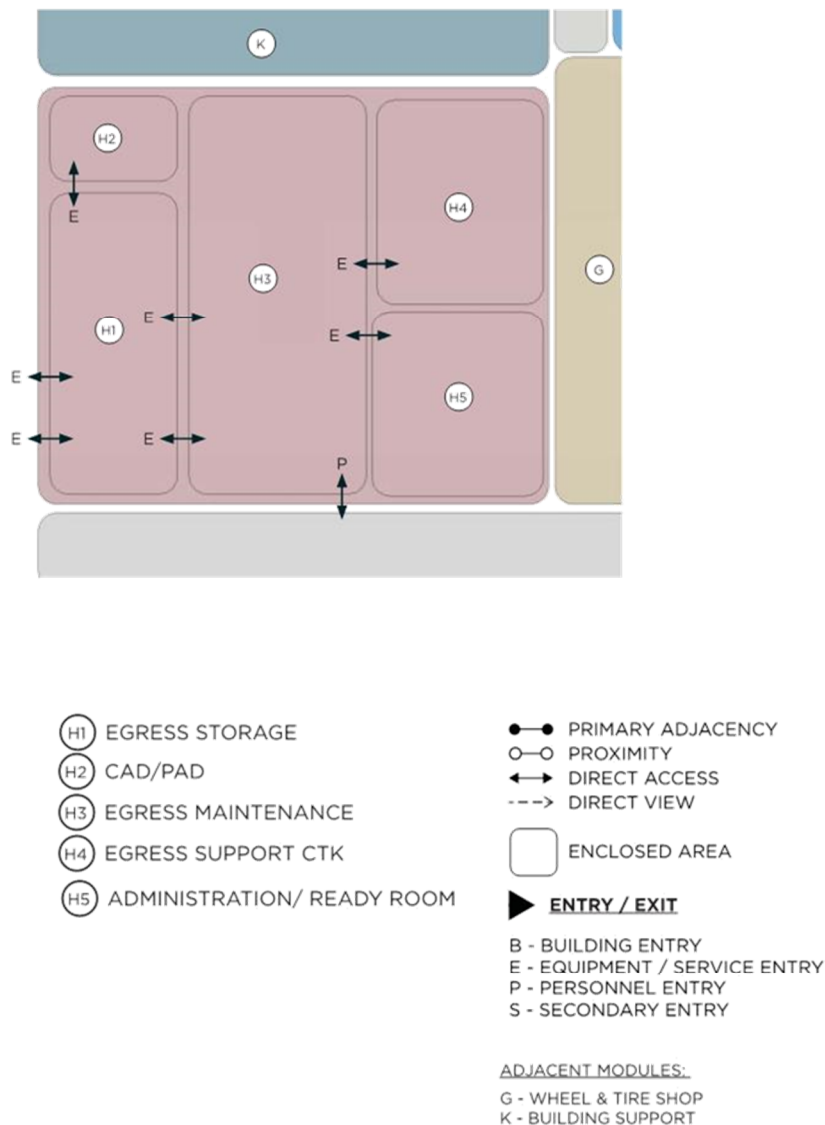
DRAWINGS NOT TO SCALE

MODULE H – EGRESS SHOP MODULE

Function and Adjacency

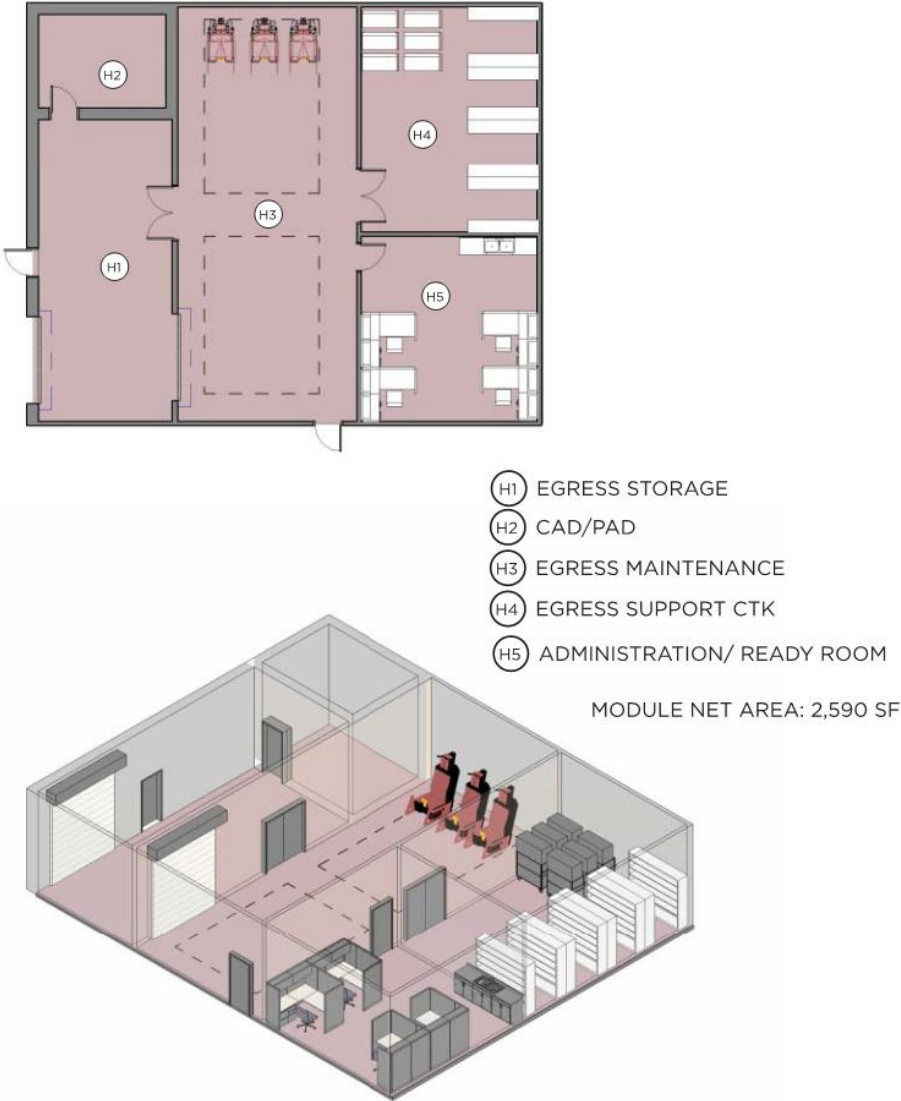
The Egress Shop Module consists of an Administration/Ready Room supporting three to four personnel, an Egress Support Consolidated Tool Kit (CTK) for tool distribution, an Egress Maintenance Room, an Egress Storage Room, and a CAD/PAD room. All cockpit egress maintenance (canopy and ejection seat maintenance) will take place in this module before the assembled product is taken to the bay. An enlarged corridor will provide equipment access to the hangar when this module cannot be placed immediately adjacent to the hangar bay.

Figure 2-H.1 Module H Adjacency Diagram



Egress Shop

Figure 2-H.2 Module H Floor Plan & Axonometric



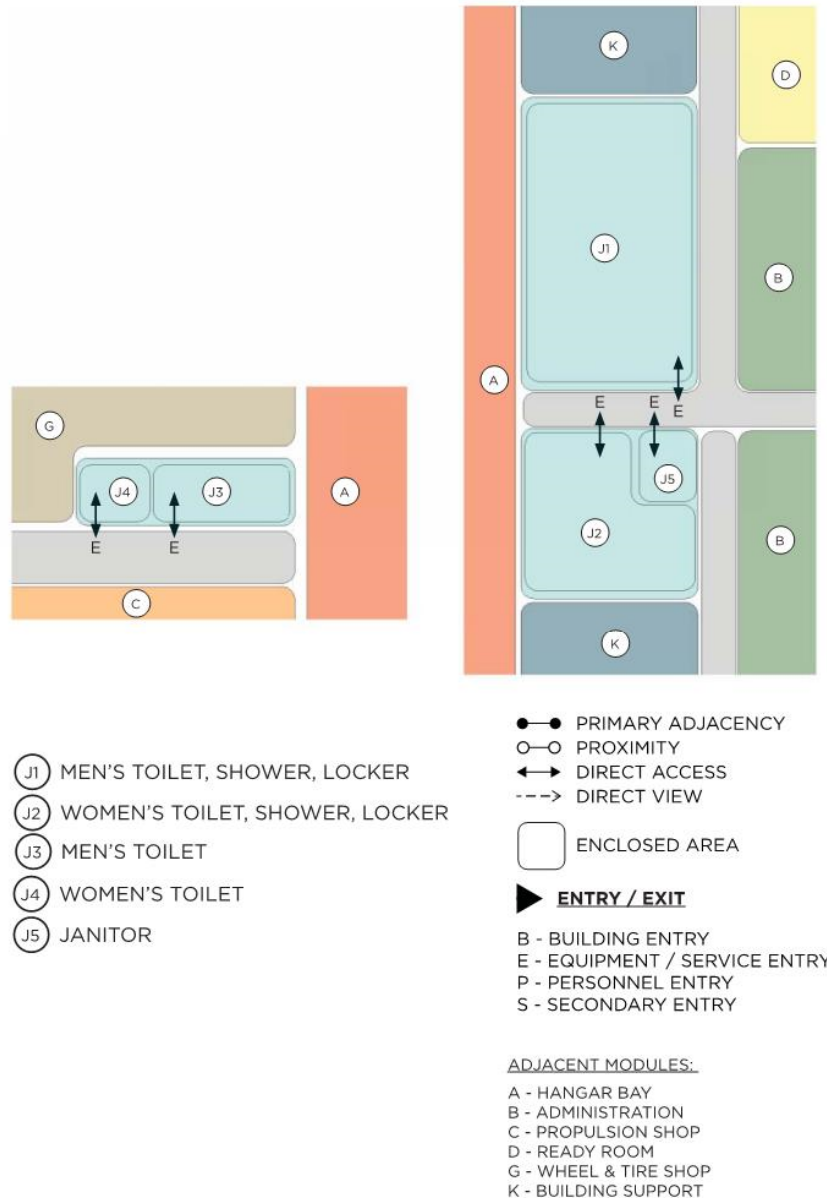
DRAWINGS NOT TO SCALE

MODULE J – TOILET, SHOWER, LOCKER

Function and Adjacency

The Toilet Module consists of two toilet areas: a men's and women's/toilet/shower/locker room (with a janitor's closet) located administrative side of the facility and a small men's and women's toilet room located on the shop side of the facility. The plumbing fixture count in the Standard design plan is approximate and actual plumbing fixture count shall be as required per actual occupancy count and as required in International Plumbing Codes, latest edition, Chapter 29.

Figure 2-J.1 Module J Adjacency Diagram



DRAWINGS NOT TO SCALE

Toilet, Shower, Locker

Figure 2-J.2 Module J Floor Plan & Axonometric



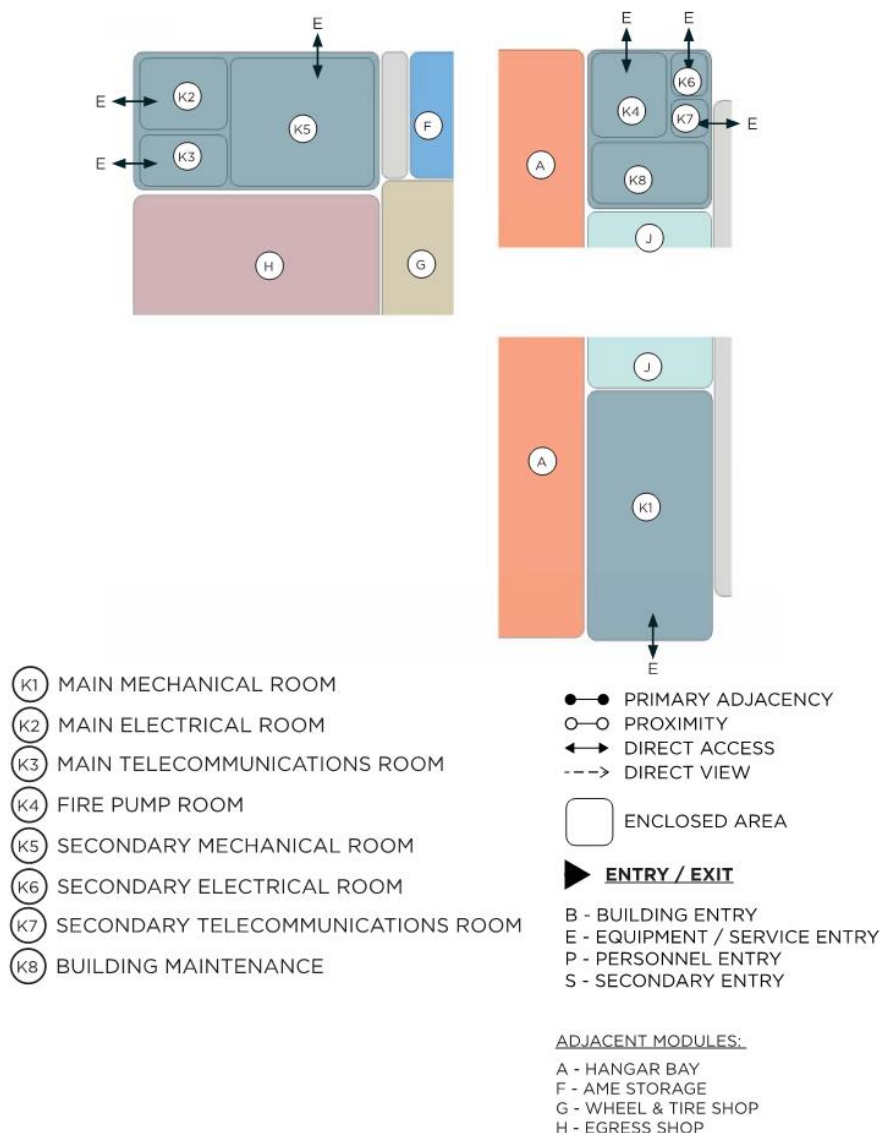
DRAWINGS NOT TO SCALE

MODULE K – BUILDING SUPPORT

Function and Adjacency

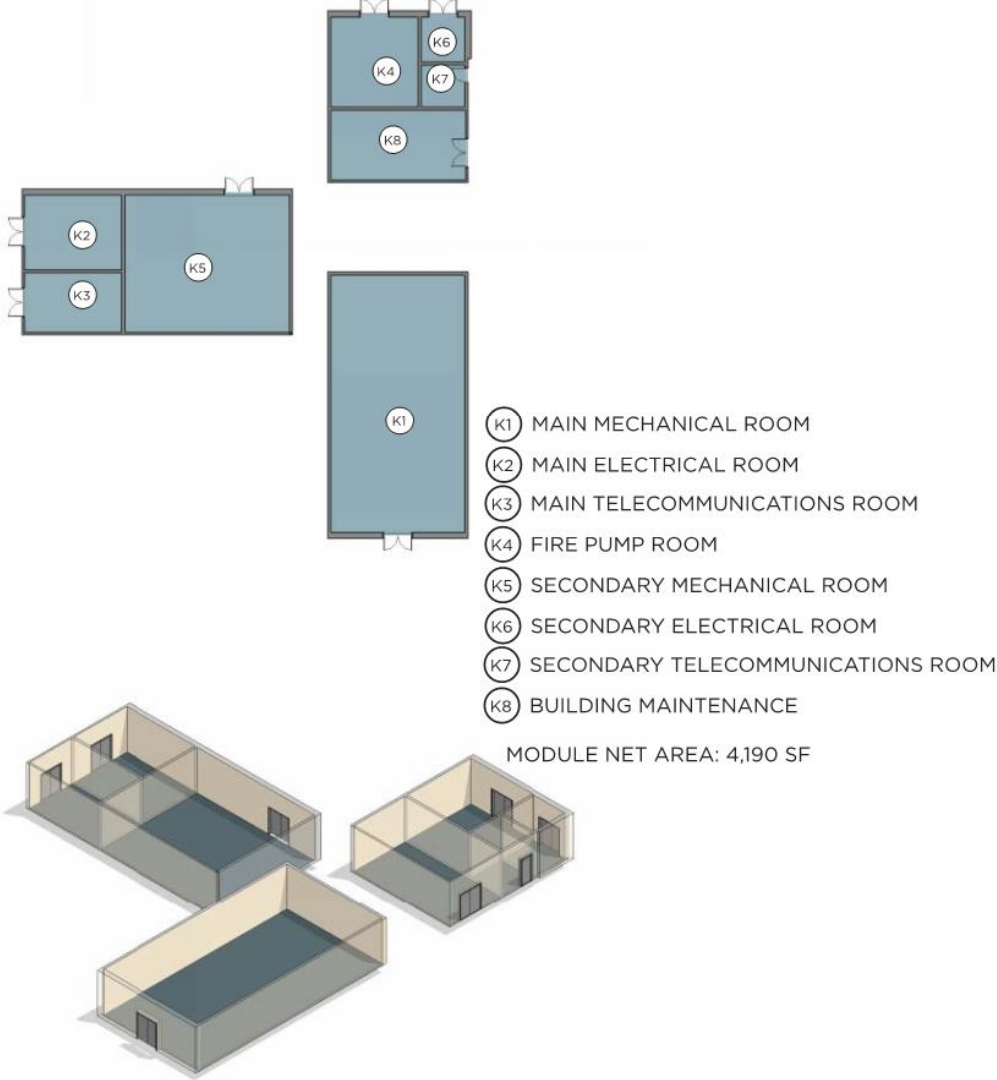
The Building Support Module consists of a mechanical room, electrical room, communications room, and fire pump room (if required). All rooms will have exterior access (with the exception of the communications room, which may have interior access). There will be a main and secondary room for each of these rooms (excluding the fire pump room) to minimize equipment /duct runs. These modules will be located on the exterior wall adjacent to the utility courtyard and accessible for maintenance.

Figure 2-K.1 Module K Adjacency Diagram



Building Support

Figure 2-K.2 Module K Floor Plan & Axonometric



DRAWINGS NOT TO SCALE

2.4.E. Room Data Sheets

Specific requirements for each room, space, or area are provided on room data sheets that correspond to their respective color-coded Modules, basis of design Functional Adjacency Diagram as well as the Interactive Programming Worksheet. Information contained on the data sheets defines the functional and physical requirements for each of the spaces within the facility type and are generally minimum requirements and must be modified as required for specific unique situations/scenarios as deemed appropriate by the USAF.

Figure 2-A.3.1 HANGAR BAY ROOM DATA SHEET		
INDEX		A1
Description/Usage		Maintenance hangar bay for fighter aircraft for aircraft inspections, tests, repairs, training, etc.
Ceiling Height		Minimum 27'-0" unobstructed clearances and as required to meet UFC 3-260-01 clearances
Windows		Translucent wall panels for daylighting
Doors	Type	Horizontal Sliding Hangar Doors or Vertical Lift Fabric Doors Hollow metal personnel doors - 3'x7'
	Security/ Hardware	Keyed lock set
	View Panels/ Kick Plates	View panels, 5" x 20" at all exterior doors Kick plates on both sides of doors
Finishes	Walls	CMU – painted wainscot 8' above floor, pre-finished metal wall or liner panels above to roof deck
	Floor	Epoxy-non-slip (fuel resistant) or dry shake hardener
	Base	No base
	Ceiling	Exposed structure –painted
Plumbing		No floor drains. Wall mounted hose stations and hose reels for cold water. Compressed air drops with hose reels - coordinate with user on quantity and location. Emergency shower and eyewash per UFC 3-420-01.
HVAC		Heating and ventilation. Exhaust directly outdoors. May require overhead radiant heating. May require snow-melting system at hangar door tracks in colder climates. Aircraft may require preconditioned air.
Fire Protection / Life Safety		Provide draft curtains. Low-level high-expansion foam system. Fire separation between office and shop areas. Wet pipe or dry pipe sprinkler system as required by UFC 3-600-01.
Power		3-phase 480V 200A outlets in addition to UFC 3-520-01 required devices installed per UFC 4-211-01
Lighting		Per UFC 3-530-01
Communication	Tele.	Per UFC 3-580-01
	Data	NIPR (and NIPR for WAP(s) if AMU utilizes wireless PMA(s))
	CCTV	Per program security requirements
	CATV	N/A
	Security	Per program security requirements
Acoustical		Per UFC 3-450-01 for noise control
Furnishings / Equipment / Casework		Two 10-ton bridge cranes spanning to support 3 aircraft each (in 6-plane scenario); overhead fall protection railing is required over fuselage and wings.
Special Requirements		Bird intrusion system at hangar bay trusses, e.g., bird netting, sonic devices, anti-roosting spikes, etc. Hangar Bay shall be sized with required clearance for engine removal/replacement.

Figure 2-B.3.1 Training Room Data Sheet		
INDEX		B1
Description/Usage		Open office with 5 workstations
Ceiling Height		9'-0" minimum
Windows		Exterior – Aluminum framed, insulated fixed, blast resistant; Meeting daylighting requirements of UFC 1-200-02, if located on an exterior wall
Doors	Type	Hollow metal, 3' x 7'
	Security/ Hardware	Keyed lock set
	View Panels/ Kick Plates	View panels, 5" x 20" Kick plates on both sides of doors
Finishes	Walls	Gypsum board - painted
	Floor	Sealed concrete, stained concrete, tile or carpet tile
	Base	Resilient or tile
	Ceiling	Acoustical Ceiling Tile
Plumbing		N/A
HVAC		Heating, ventilation, air conditioning
Fire Protection / Life Safety		Wet pipe sprinkler system
Power		Per UFC 3-520-01
Lighting		Per UFC 3-530-01
Communication	Tele.	One at desk
	Data	NIPR
	CCTV	N/A
	CATV	N/A
	Security	N/A
Acoustical		Per UFC 3-450-01 for noise control
Furnishings / Equipment / Casework		Five (5) workstations
Special Requirements		N/A

Figure 2-B.3.2 Specialist/ Section Chief Room Data Sheet		
INDEX	B2	
Description/Usage	Open office with 5 workstations	
Ceiling Height	9'-0" minimum	
Windows	Exterior – Aluminum framed, insulated fixed, blast resistant; Meeting daylighting requirements of UFC 1-200-02, if located on an exterior wall	
Doors	Type	Hollow metal, 3' x 7'
	Security/ Hardware	Keyed lock set
	View Panels/ Kick Plates	View panels, 5" x 20" Kick plates on both sides of doors
Finishes	Walls	Gypsum board - painted
	Floor	Sealed concrete, stained concrete, tile or carpet tile
	Base	Resilient or tile
	Ceiling	Acoustical Ceiling Tile
Plumbing	N/A	
HVAC	Heating, ventilation, air conditioning	
Fire Protection / Life Safety	Wet pipe sprinkler system	
Power	Per UFC 3-520-01	
Lighting	Per UFC 3-530-01	
Communication	Tele.	One per desk
	Data	NIPR
	CCTV	N/A
	CATV	N/A
	Security	N/A
Acoustical	Per UFC 3-450-01 for noise control	
Furnishings / Equipment / Casework	Five (5) workstations	
Special Requirements	N/A	

Figure 2-B.3.3 Weapons Section Chief Room Data Sheet		
INDEX	B3	
Description/Usage	Open office with 4 workstations	
Ceiling Height	9'-0" minimum	
Windows	Exterior – Aluminum framed, insulated fixed, blast resistant; Meeting daylighting requirements of UFC 1-200-02	
Doors	Type	Hollow metal, 3' x 7'
	Security/ Hardware	Keyed lock set
	View Panels/ Kick Plates	View panels, 5" x 20" Kick plates on both sides of door
Finishes	Walls	Systems furniture, demountable partitions or gypsum board - painted
	Floor	Sealed concrete, stained concrete, tile or carpet tile
	Base	Resilient or tile
	Ceiling	Acoustical Ceiling Tile
Plumbing	N/A	
HVAC	Heating, ventilation, air conditioning	
Fire Protection / Life Safety	Wet pipe sprinkler system	
Power	Per UFC 3-520-01	
Lighting	Per UFC 3-530-01	
Communication	Tele.	One per desk
	Data	NIPR
	CCTV	N/A
	CATV	N/A
	Security	N/A
Acoustical	Per UFC 3-450-01 for noise control	
Furnishings / Equipment / Casework	Four (4) workstations	
Special Requirements	N/A	

Figure 2-B.3.4 AOIC/ NCOIC Room Data Sheet		
INDEX	B4	
Description/Usage	Open office with 4 workstations	
Ceiling Height	9'-0" minimum	
Windows	Exterior – Aluminum framed, insulated fixed, blast resistant; Meeting daylighting requirements of UFC 1-200-02	
Doors	Type	Hollow metal, 3' x 7'
	Security/ Hardware	Keyed lock set
	View Panels/ Kick Plates	View panels, 5" x 20" Kick plates on both sides of door
Finishes	Walls	Systems furniture, demountable partitions or gypsum board - painted
	Floor	Sealed concrete, stained concrete, tile or carpet tile
	Base	Resilient or tile
	Ceiling	Acoustical Ceiling Tile
Plumbing	N/A	
HVAC	Heating, ventilation, air conditioning	
Fire Protection / Life Safety	Wet pipe sprinkler system	
Power	Per UFC 3-520-01	
Lighting	Per UFC 3-530-01	
Communication	Tele.	One per desk
	Data	NIPR
	CCTV	N/A
	CATV	N/A
	Security	N/A
Acoustical	Per UFC 3-450-01 for noise control	
Furnishings / Equipment / Casework	Four (4) workstations	
Special Requirements	N/A	

Figure 2-B.3.5 ALIS Terminals Room Data Sheet		
INDEX	B5	
Description/Usage	Room for 24 small hot desks/stations, printers and file storage	
Ceiling Height	9'-0" minimum	
Windows	No exterior windows	
Doors	Type	Hollow metal, 3' x 7'
	Security/ Hardware	Keyed lock set
	View Panels/ Kick Plates	View panels, 5" x 20" Kick plates on both sides of door
Finishes	Walls	Gypsum board - painted
	Floor	Sealed concrete, stained concrete, tile or carpet tile
	Base	Resilient or tile
	Ceiling	Acoustical Ceiling Tile
Plumbing	N/A	
HVAC	Heating, ventilation, air conditioning	
Fire Protection / Life Safety	Wet pipe sprinkler system	
Power	Per UFC 3-520-01	
Lighting	Per UFC 3-530-01	
Communication	Tele.	One per room
	Data	NIPR
	CCTV	N/A
	CATV	N/A
	Security	N/A
Acoustical	Per UFC 3-450-01 for noise control	
Furnishings / Equipment / Casework	24 Hot Desks, printers, and file storage	
Special Requirements	N/A	

Figure 2-B.3.6 ALIS Administration Room Data Sheet		
INDEX	B6	
Description/Usage	Classified room with two workstations	
Ceiling Height	9'-0" minimum	
Windows	Exterior – Aluminum framed, insulated fixed, blast resistant; Meeting daylighting requirements of UFC 1-200-02, if located on an exterior wall	
Doors	Type	Hollow metal, 3' x 7'
	Security/ Hardware	Electronic strike, card reader, X-09 lock
	View Panels/ Kick Plates	No view panels Kick plates on both sides of door
Finishes	Walls	Gypsum board - painted
	Floor	Sealed concrete, stained concrete, tile or carpet tile
	Base	Resilient or tile
	Ceiling	Acoustical Ceiling Tile
Plumbing	N/A	
HVAC	Heating, ventilation, air conditioning	
Fire Protection / Life Safety	Wet pipe sprinkler system	
Power	Per UFC 3-520-01	
Lighting	Per UFC 3-530-01	
Communication	Tele.	One per desk
	Data	NIPR / SIPR
	CCTV	N/A
	CATV	N/A
	Security	Per program security requirements
Acoustical	Per UFC 3-450-01 for noise control	
Furnishings / Equipment / Casework	Two (2) workstations	
Special Requirements	N/A	

Figure 2-B.3.7 AMU Programming Room Data Sheet		
INDEX	B7	
Description/Usage	Office with one workstation	
Ceiling Height	9'-0" minimum	
Windows	Exterior – Aluminum framed, insulated fixed, blast resistant; Meeting daylighting requirements of UFC 1-200-02, if located on an exterior wall	
Doors	Type	Hollow metal, 3' x 7'
	Security/ Hardware	Keyed lock set
	View Panels/ Kick Plates	View panels, 5" x 20" Kick plates on both sides of door
Finishes	Walls	Systems furniture, demountable partitions or gypsum board - painted
	Floor	Sealed concrete, stained concrete, tile or carpet tile
	Base	Resilient or tile
	Ceiling	Acoustical Ceiling Tile
Plumbing	N/A	
HVAC	Heating, ventilation, air conditioning	
Fire Protection / Life Safety	Wet pipe sprinkler system	
Power	Per UFC 3-520-01	
Lighting	Per UFC 3-530-01	
Communication	Tele.	One per desk
	Data	NIPR
	CCTV	N/A
	CATV	One Outlet
	Security	N/A
Acoustical	Per UFC 3-450-01 for noise control	
Furnishings / Equipment / Casework	One (1) workstation	
Special Requirements	N/A	

Figure 2-B.3.8 Contractor Open Office Room Data Sheet		
INDEX	B8	
Description/Usage	Classified open office with 9 workstations	
Ceiling Height	9'-0" minimum	
Windows	Exterior – Aluminum framed, insulated fixed, blast resistant; Meeting daylighting requirements of UFC 1-200-02, if located on an exterior wall	
Doors	Type	Hollow metal, 3' x 7'
	Security/ Hardware	Keyed lock set
	View Panels/ Kick Plates	View panels, 5" x 20" Kick plates on both sides of doors
Finishes	Walls	Gypsum board - painted
	Floor	Sealed concrete, stained concrete, tile or carpet tile
	Base	Resilient or tile
	Ceiling	Acoustical Ceiling Tile
Plumbing	N/A	
HVAC	Heating, ventilation, air conditioning	
Fire Protection / Life Safety	Wet pipe sprinkler system	
Power	Per UFC 3-520-01	
Lighting	Per UFC 3-530-01	
Communication	Tele.	One per desk
	Data	NIPR
	CCTV	N/A
	CATV	N/A
	Security	N/A
Acoustical	Per UFC 3-450-01 for noise control	
Furnishings / Equipment / Casework	Nine (9) workstations	
Special Requirements	N/A	

Figure 2-B.3.9 AFETS Room Data Sheet		
INDEX	B9	
Description/Usage	Open office with 2 workstations	
Ceiling Height	9'-0" minimum	
Windows	Exterior – Aluminum framed, insulated fixed, blast resistant; Meeting daylighting requirements of UFC 1-200-02, if located on an exterior wall	
Doors	Type	Hollow metal, 3' x 7'
	Security/ Hardware	Keyed lock set
	View Panels/ Kick Plates	View panels, 5" x 20" Kick plates on both sides of door
Finishes	Walls	Systems furniture, demountable partitions or gypsum board - painted
	Floor	Sealed concrete, stained concrete, tile or carpet tile
	Base	Resilient or tile
	Ceiling	Acoustical Ceiling Tile
Plumbing	N/A	
HVAC	Heating, ventilation, air conditioning	
Fire Protection / Life Safety	Wet pipe sprinkler system	
Power	Per UFC 3-520-01	
Lighting	Per UFC 3-530-01	
Communication	Tele.	One per desk
	Data	NIPR
	CCTV	N/A
	CATV	N/A
	Security	N/A
Acoustical	Per UFC 3-450-01 for noise control	
Furnishings / Equipment / Casework	Two (2) workstations	
Special Requirements	N/A	

Figure 2-B.3.10 Contractor Office Room Data Sheet		
INDEX	B10	
Description/Usage	Office with 2 workstations	
Ceiling Height	9'-0" minimum	
Windows	Exterior – Aluminum framed, insulated fixed, blast resistant; Meeting daylighting requirements of UFC 1-200-02, if located on an exterior wall	
Doors	Type	Hollow metal, 3' x 7'
	Security/ Hardware	Keyed lock set
	View Panels/ Kick Plates	View panels, 5" x 20" Kick plates on both sides of door
Finishes	Walls	Systems furniture, demountable partitions or gypsum board - painted
	Floor	Sealed concrete, stained concrete, tile or carpet tile
	Base	Resilient or tile
	Ceiling	Acoustical Ceiling Tile
Plumbing	N/A	
HVAC	Heating, ventilation, air conditioning	
Fire Protection / Life Safety	Wet pipe sprinkler system	
Power	Per UFC 3-520-01	
Lighting	Per UFC 3-530-01	
Communication	Tele.	One per desk
	Data	NIPR
	CCTV	N/A
	CATV	N/A
	Security	N/A
Acoustical	Per UFC 3-450-01 for noise control	
Furnishings / Equipment / Casework	Two (2) workstations	
Special Requirements	N/A	

Figure 2-B.3.11 Conference Room Data Sheet		
INDEX	B11	
Description/Usage	Conference Room for Facility	
Ceiling Height	9'-0" minimum	
Windows	Exterior – Aluminum framed, insulated fixed, blast resistant; Meeting daylighting requirements of UFC 1-200-02	
Doors	Type	Hollow metal, 3' x 7'
	Security/ Hardware	Keyed lock set
	View Panels/ Kick Plates	View panels, 5" x 20" and side lite, 12" wide Kick plates on both sides of door
Finishes	Walls	Systems furniture, demountable partitions or gypsum board - painted
	Floor	Sealed concrete, stained concrete, tile or carpet tile
	Base	Resilient or tile
	Ceiling	Acoustical Ceiling Tile
Plumbing	N/A	
HVAC	Heating, ventilation, air conditioning	
Fire Protection / Life Safety	Wet pipe sprinkler system	
Power	Per UFC 3-520-01	
Lighting	Per UFC 3-530-01	
Communication	Tele.	One per room
	Data	NIPR
	CCTV	N/A
	CATV	N/A
	Security	N/A
Acoustical	Per UFC 3-450-01 for noise control	
Furnishings / Equipment / Casework	Conference table for 12; 12 extra chairs at wall	
Special Requirements	N/A	

Figure 2-B.3.12 Crew Chiefs 1 Room Data Sheet		
INDEX		B12
Description/Usage		Classified open office with 4 workstations
Ceiling Height		9'-0" minimum
Windows		Exterior – Aluminum framed, insulated fixed, blast resistant; Meeting daylighting requirements of UFC 1-200-02, if located on an exterior wall
Doors	Type	Hollow metal, 3' x 7'
	Security/ Hardware	Electronic strike, card reader, X-09 lock
	View Panels/ Kick Plates	No view panels Kick plates both sides of door
Finishes	Walls	Gypsum board - painted
	Floor	Sealed concrete, stained concrete, tile or carpet tile
	Base	Resilient or tile
	Ceiling	Acoustical Ceiling Tile
Plumbing		N/A
HVAC		Heating, ventilation, air conditioning
Fire Protection / Life Safety		Wet pipe sprinkler system
Power		Per UFC 3-520-01
Lighting		Per UFC 3-530-01
Communication	Tele.	One per desk
	Data	NIPR
	CCTV	N/A
	CATV	N/A
	Security	N/A
Acoustical		Per UFC 3-450-01 for noise control
Furnishings / Equipment / Casework		Four (4) workstations
Special Requirements		N/A

Figure 2-B.3.13 Crew Chiefs 2 Room Data Sheet		
INDEX	B13	
Description/Usage	Open office with 4 workstations	
Ceiling Height	9'-0" minimum	
Windows	Exterior – Aluminum framed, insulated fixed, blast resistant; Meeting daylighting requirements of UFC 1-200-02	
Doors	Type	Hollow metal, 3' x 7'
	Security/ Hardware	Keyed lock set
	View Panels/ Kick Plates	View panels, 5" x 20" Kick plates on both sides of door
Finishes	Walls	Gypsum Board - Painted
	Floor	Sealed concrete, stained concrete, tile or carpet tile
	Base	Resilient or tile
	Ceiling	Acoustical Ceiling Tile
Plumbing	N/A	
HVAC	Heating, ventilation, air conditioning	
Fire Protection / Life Safety	Wet pipe sprinkler system	
Power	Per UFC 3-520-01	
Lighting	Per UFC 3-530-01	
Communication	Tele.	One per desk
	Data	NIPR
	CCTV	N/A
	CATV	N/A
	Security	N/A
Acoustical	Per UFC 3-450-01 for noise control	
Furnishings / Equipment / Casework	Four (4) workstations	
Special Requirements	N/A	

Figure 2-B.3.14 OIC/ Chief Room Data Sheet		
INDEX		B14
Description/Usage		Open office with 4 workstations
Ceiling Height		9'-0" minimum
Windows		Exterior – Aluminum framed, insulated fixed, blast resistant; Meeting daylighting requirements of UFC 1-200-02
Doors	Type	Hollow metal, 3' x 7'
	Security/ Hardware	Keyed lock set
	View Panels/ Kick Plates	View panels, 5" x 20" Kick plates on both sides of door
Finishes	Walls	Gypsum Board - Painted
	Floor	Sealed concrete, stained concrete, tile or carpet tile
	Base	Resilient or tile
	Ceiling	Acoustical Ceiling Tile
Plumbing		N/A
HVAC		Heating, ventilation, air conditioning
Fire Protection / Life Safety		Wet pipe sprinkler system
Power		Per UFC 3-520-01
Lighting		Per UFC 3-530-01
Communication	Tele.	One per desk
	Data	NIPR
	CCTV	N/A
	CATV	N/A
	Security	N/A
Acoustical		Per UFC 3-450-01 for noise control
Furnishings / Equipment / Casework		Four (4) workstations
Special Requirements		N/A

Figure 2-B.3.15 Debrief Room Data Sheet		
INDEX		B15
Description/Usage		Open office with 2 workstations and 4 hot desks
Ceiling Height		9'-0" minimum
Windows		No exterior windows
Doors	Type	Hollow metal, 3' x 7'
	Security/ Hardware	Keyed lock set
	View Panels/ Kick Plates	View panels, 5" x 20" Kick plates on both sides of door
Finishes	Walls	Gypsum Board - Painted
	Floor	Sealed concrete, stained concrete, tile or carpet tile
	Base	Resilient or tile
	Ceiling	Acoustical Ceiling Tile
Plumbing		N/A
HVAC		Heating, ventilation, air conditioning
Fire Protection / Life Safety		Wet pipe sprinkler system
Power		Per UFC 3-520-01
Lighting		Per UFC 3-530-01
Communication	Tele.	One per room
	Data	NIPR
	CCTV	N/A
	CATV	N/A
	Security	N/A
Acoustical		Per UFC 3-450-01 for noise control
Furnishings / Equipment / Casework		Two (2) workstations
Special Requirements		N/A

Figure 2-B.3.16 Secure Storage Room Data Sheet

INDEX		B16
Description/Usage		Secure Storage
Ceiling Height		9'-0" minimum
Windows		No exterior or interior windows
Doors	Type	Hollow metal, 3' x 7'
	Security/ Hardware	Keyed lock set
	View Panels/ Kick Plates	View panels, 5" x 20" Kick plates on both sides of door
Finishes	Walls	Gypsum Board - Painted
	Floor	Sealed concrete, stained concrete, tile or carpet tile
	Base	Resilient or tile
	Ceiling	Acoustical Ceiling Tile
Plumbing		N/A
HVAC		Heating, ventilation, air conditioning
Fire Protection / Life Safety		Wet pipe sprinkler system
Power		Per UFC 3-520-01
Lighting		Per UFC 3-530-01
Communication	Tele.	N/A
	Data	N/A
	CCTV	N/A
	CATV	N/A
	Security	IDS
Acoustical		Per UFC 3-450-01 for noise control
Furnishings / Equipment / Casework		N/A
Special Requirements		N/A

Figure 2-C.3.17 Secure Vault Room Data Sheet		
INDEX	B17	
Description/Usage	Secured Vault with one workstation	
Ceiling Height	9'-0" minimum	
Windows	No exterior or interior windows	
Doors	Type	Hollow metal, 3' x 7'
	Security/ Hardware	Keyed lock set
	View Panels/ Kick Plates	View panels, 5" x 20" Kick plates on both sides of door
Finishes	Walls	Gypsum Board - Painted
	Floor	Sealed concrete, stained concrete, tile or carpet tile
	Base	Resilient or tile
	Ceiling	Acoustical Ceiling Tile
Plumbing	N/A	
HVAC	Heating, ventilation, air conditioning	
Fire Protection / Life Safety	Wet pipe sprinkler system	
Power	Per UFC 3-520-01	
Lighting	Per UFC 3-530-01	
Communication	Tele.	N/A
	Data	N/A
	CCTV	N/A
	CATV	N/A
	Security	IDS
Acoustical	Per UFC 3-450-01 for noise control	
Furnishings / Equipment / Casework	One (1) workstation	
Special Requirements	N/A	

Figure 2-B.3.18 Production Room Data Sheet		
INDEX	B18	
Description/Usage	Open office with 6 workstations	
Ceiling Height	9'-0" minimum	
Windows	Exterior – Aluminum framed, insulated fixed, blast resistant; Meeting daylighting requirements of UFC 1-200-02	
Doors	Type	Hollow metal, 3' x 7'
	Security/ Hardware	Keyed lock set
	View Panels/ Kick Plates	View panels, 5" x 20" Kick plates on both sides of door
Finishes	Walls	Gypsum Board - Painted
	Floor	Sealed concrete, stained concrete, tile or carpet tile
	Base	Resilient or tile
	Ceiling	Acoustical Ceiling Tile
Plumbing	N/A	
HVAC	Heating, ventilation, air conditioning	
Fire Protection / Life Safety	Wet pipe sprinkler system	
Power	Per UFC 3-520-01	
Lighting	Per UFC 3-530-01	
Communication	Tele.	One per desk
	Data	NIPR
	CCTV	N/A
	CATV	N/A
	Security	N/A
Acoustical	Per UFC 3-450-01 for noise control	
Furnishings / Equipment / Casework	Six (6) workstations	
Special Requirements	N/A	

Figure 2-C.3.1 Propulsion Shop Room Data Sheet		
INDEX		C1
Description/Usage		
Ceiling Height		9'-0" minimum
Windows		No Windows Required
Doors	Type	Hollow metal, 3' x 7'
	Security/ Hardware	Keyed lock set
	View Panels/ Kick Plates	No view panels Kick plates both sides of door
Finishes	Walls	CMU or gypsum board - painted
	Floor	Sealer hardener
	Base	Resilient
	Ceiling	Exposed structure - painted
Plumbing		Emergency shower and eyewash stations per UFC 3-420-01.
HVAC		Heating and ventilation. Exhaust directly outdoors through roof.
Fire Protection / Life Safety		Wet pipe sprinkler
Power		Per UFC 3-520-01 and NFPA 70 NEC for hazardous locations
Lighting		Per UFC 3-530-01 and NFPA 70 NEC for hazardous locations
Communication	Tele.	N/A
	Data	N/A
	CCTV	N/A
	CATV	N/A
	Security	N/A
Acoustical		N/A
Furnishings / Equipment / Casework		N/A
Special Requirements		Overhead 7000 lb. crane for lifting on-equipment and off-equipment

Figure 2-C.3.2 Propulsion Shop Office Room Data Sheet		
INDEX	C2	
Description/Usage	Open office with 2 workstations	
Ceiling Height	9'-0" minimum	
Windows	Exterior – Aluminum framed, insulated fixed, blast resistant; Meeting daylighting requirements of UFC 1-200-02	
Doors	Type	Hollow metal, 3' x 7'
	Security/ Hardware	Keyed lock set
	View Panels/ Kick Plates	View panels, 5" x 20" Kick plates on both sides of door
Finishes	Walls	Systems furniture, demountable partitions or gypsum board - painted
	Floor	Sealed concrete, stained concrete, tile or carpet tile
	Base	Resilient or tile
	Ceiling	Acoustical Ceiling Tile
Plumbing	N/A	
HVAC	Heating, ventilation, air conditioning	
Fire Protection / Life Safety	Wet pipe sprinkler system	
Power	Per UFC 3-520-01	
Lighting	Per UFC 3-530-01	
Communication	Tele.	One per desk
	Data	NIPR
	CCTV	N/A
	CATV	N/A
	Security	N/A
Acoustical	Per UFC 3-450-01 for noise control	
Furnishings / Equipment / Casework	Two (2) workstations	
Special Requirements	N/A	

Figure 2-D.3.1 Ready Room Data Sheet		
INDEX	D1	
Description/Usage	Ready room for flight maintenance, with 16 four-person tables and a recycling area	
Ceiling Height	9'-0" minimum	
Windows	Exterior – Aluminum framed, insulated fixed, blast resistant; Meeting daylighting requirements of UFC 1-200-02	
Doors	Type	Hollow metal, full glass, 3'-7' (single and pair)
	Security/ Hardware	Keyed lock sets
	View Panels/ Kick Plates	View panels, 5" x 20" Kick plates on both sides of doors
Finishes	Walls	Gypsum board - painted
	Floor	Sealed concrete, stained concrete, tile
	Base	Resilient or tile
	Ceiling	Acoustical Ceiling Tile
Plumbing	N/A	
HVAC	Heating, ventilation, air conditioning	
Fire Protection / Life Safety	Wet pipe sprinkler system	
Power	Per UFC 3-520-01	
Lighting	Per UFC 3-530-01	
Communication	Tele.	One per room
	Data	NIPR
	CCTV	N/A
	CATV	One outlet
	Security	N/A
Acoustical	Per UFC 3-450-01 for noise control	
Furnishings / Equipment / Casework	Tables, chairs,	
Special Requirements	Recycling Area	

Figure 2-D.3.2 Maintenance Dispatch Room Data Sheet		
INDEX	D2	
Description/Usage	Office with one workstation	
Ceiling Height	9'-0" minimum	
Windows	Exterior – Aluminum framed, insulated fixed, blast resistant; Meeting daylighting requirements of UFC 1-200-02, if located on an exterior wall	
Doors	Type	Hollow metal, 3' x 7'
	Security/ Hardware	Keyed lock set
	View Panels/ Kick Plates	View panels, 5" x 20" Kick plates on both sides of door
Finishes	Walls	Systems furniture, demountable partitions or gypsum board - painted
	Floor	Sealed concrete, stained concrete, tile or carpet tile
	Base	Resilient or tile
	Ceiling	Acoustical ceiling Tile
Plumbing	N/A	
HVAC	Heating, ventilation, air conditioning	
Fire Protection / Life Safety	Wet pipe sprinkler system	
Power	Per UFC 3-520-01	
Lighting	Per UFC 3-530-01	
Communication	Tele.	One per desk
	Data	NIPR
	CCTV	N/A
	CATV	N/A
	Security	N/A
Acoustical	Per UFC 3-450-01 for noise control	
Furnishings / Equipment / Casework	One (1) workstation	
Special Requirements	N/A	

Figure 2-D.3.3 Storage Room Data Sheet		
INDEX		D3
Description/Usage		Storage room adjacent to ready room with distribution counter with counter shutter
Ceiling Height		9'-0" minimum
Windows		N/A
Doors	Type	Hollow metal, 3' - 7' Counter shutter – 6' x 4', manually operated
	Security/ Hardware	Keyed lock set
	View Panels/ Kick Plates	View panels, 5" x 20" Kick plates on both sides of door
Finishes	Walls	Gypsum board - painted
	Floor	Sealed concrete, Stained concrete, tile
	Base	Resilient or tile
	Ceiling	Gypsum board – painted or exposed structure - painted
Plumbing		Sink
Fire Protection / Life Safety		Wet pipe sprinkler system
Power		Per UFC 3-520-01
Lighting		Per UFC 3-530-01
Communication	Tele.	N/A
	Data	N/A
	CCTV	N/A
	CATV	N/A
	Security	N/A
Acoustical		Per UFC 3-450-01 for noise control
Furnishings / Equipment / Casework		N/A
Special Requirements		N/A

Figure 2-D.3.4 Break Room Data Sheet		
INDEX		D4
Description/Usage		Small area for staff food preparation and storage with a counter, cabinets, sink, microwaves, refrigerators, ice maker, and electric water cooler
Ceiling Height		9'-0" minimum
Windows		N/A
Doors	Type	N/A
	Security/ Hardware	N/A
	View Panels/ Kick Plates	N/A
Finishes	Walls	Gypsum board - painted
	Floor	Sealed concrete, stained concrete, tile, terrazzo or quartz epoxy
	Base	Sealed concrete, stained concrete, tile
	Ceiling	Acoustical Ceiling Tile
Plumbing		Sink with disposal, electric water cooler. Water for ice machine.
HVAC		Heating, ventilation, air conditioning
Fire Protection / Life Safety		Wet pipe sprinkler system
Power		Per UFC 3-520-01
Lighting		Per UFC 3-530-01
Communication	Tele.	N/A
	Data	N/A
	CCTV	N/A
	CATV	N/A
	Security	N/A
Acoustical		Per UFC 3-450-01 for noise control
Furnishings / Equipment / Casework		Counter, cabinets,
Special Requirements		

Figure 2-E.3.1 Tool Room Data Sheet		
INDEX		E1
Description/Usage		Tool/parts issuing area with access to hangar bay and flight line
Ceiling Height		No ceiling, 12' minimum clearance
Windows		N/A
Doors	Type	Hollow metal, pair 3' x 7' to exterior and to hangar bay, single 3' x 7' to assembly area, overhead coiling, 8' x 8' to hangar and assembly area, power operated
	Security/ Hardware	Keyed lock sets
	View Panels/ Kick Plates	View panels, 5" x 20" Kick plates on both sides of doors
Finishes	Walls	CMU - painted
	Floor	Sealed concrete
	Base	No base
	Ceiling	Exposed structure - painted
Plumbing		N/A
HVAC		Heating, ventilation, air conditioning
Fire Protection / Life Safety		Wet pipe sprinkler system
Power		Per UFC 3-520-01
Lighting		Per UFC 3-530-01
Communication	Tele.	One per room
	Data	NIPR
	CCTV	N/A
	CATV	N/A
	Security	Per program security requirements
Acoustical		N/A
Furnishings / Equipment / Casework		N/A
Special Requirements		N/A

Figure 2-E.3.2 Tool Issue Room Data Sheet		
INDEX	E2	
Description/Usage	Tools/parts assembly area with exterior access and access to tool issue with counter and counter shutter	
Ceiling Height	No ceiling, 12' minimum clearance	
Windows	N/A	
Doors	Type	Hollow metal, 3'-7' to exterior; overhead insulated coiling door, 8' x 12' to exterior, 8' x 4' counter shutter, power operated
	Security/ Hardware	Keyed lock set
	View Panels/ Kick Plates	View panels, 5" x 20" Kick plates on both sides of doors
Finishes	Walls	CMU - painted
	Floor	Sealed concrete
	Base	No base
	Ceiling	Exposed structure - painted
Plumbing	N/A	
HVAC	Heating, ventilation, air conditioning	
Fire Protection / Life Safety	Wet pipe sprinkler system	
Power	Per UFC 3-520-01	
Lighting	Per UFC 3-530-01	
Communication	Tele.	One per room
	Data	NIPR
	CCTV	N/A
	CATV	N/A
	Security	Per program security requirement
Acoustical	Per UFC 3-450-01 for noise control	
Furnishings / Equipment / Casework	N/A	
Special Requirements	N/A	

Figure 2-E.3.3 Collateral Storage Room Data Sheet

INDEX		E3
Description/Usage		Classified secure collateral storage
Ceiling Height		9'-0" minimum to underside of vault cap
Windows		N/A
Doors	Type	39" x 78" minimum Class V vault door
	Security/ Hardware	Per UFC 4-215-01
	View Panels/ Kick Plates	N/A N/A
Finishes	Walls	CMU - painted
	Floor	Sealed concrete
	Base	No base
	Ceiling	Gypsum board - painted
Plumbing		N/A
HVAC		Heating, ventilation, air conditioning
Fire Protection / Life Safety		Wet pipe sprinkler system
Power		Per UFC 3-520-01
Lighting		Per UFC 3-530-01
Communication	Tele.	N/A
	Data	N/A
	CCTV	Per program security requirements
	CATV	N/A
	Security	Per program security requirements
Acoustical		Per UFC 3-450-01 for noise control
Furnishings / Equipment / Casework		N/A
Special Requirements		N/A

Figure 2-E.3.4 HAZMAT Room Data Sheet		
INDEX		E4
Description/Usage		Hazardous material storage with exterior access for small amounts of aircraft paint, sanding equipment, supplies, etc.
Ceiling Height		No ceiling, 9'-0" minimum clearance
Windows		N/A
Doors	Type	Hollow metal, pair 3' x 7' to exterior, single 3' x 7' to assembly area
	Security/ Hardware	Keyed lock set
	View Panels/ Kick Plates	No view panels Kick plates both sides of doors
Finishes	Walls	CMU - painted
	Floor	Sealed concrete
	Base	No base
	Ceiling	Exposed structure - painted
Plumbing		Emergency shower/eyewash station per UFC 3-420-01
HVAC		Heated and ventilated. Exhaust directly outdoors.
Fire Protection / Life Safety		Wet pipe sprinkler system.
Power		Per UFC 3-520-01
Lighting		Per UFC 3-530-01
Communication	Tele.	N/A
	Data	N/A
	CCTV	N/A
	CATV	N/A
	Security	N/A
Acoustical		N/A
Furnishings / Equipment / Casework		N/A
Special Requirements		N/A

Figure 2-E.3.5 Battery Charging Room Data Sheet		
INDEX		E5
Description/Usage		Battery charging room
Ceiling Height		No ceiling, 9'-0" minimum clearance
Windows		N/A
Doors	Type	No door, cased opening, 4'x7'
	Security/ Hardware	N/A
	View Panels/ Kick Plates	N/A N/A
Finishes	Walls	CMU - painted
	Floor	Sealed concrete
	Base	No base
	Ceiling	Gypsum board - painted
Plumbing		Emergency shower/eyewash station per UFC 3-420-01. Sink with drain to neutralization tank.
HVAC		Heating, ventilation, air conditioning. Exhaust from over charging stations to outdoors through roof.
Fire Protection / Life Safety		Wet pipe sprinkler system
Power		Per UFC 3-520-01
Lighting		Per UFC 3-530-01
Communication	Tele.	N/A
	Data	N/A
	CCTV	N/A
	CATV	N/A
	Security	N/A
Acoustical		N/A
Furnishings / Equipment / Casework		N/A
Special Requirements		Charging stations to be low counter type, 30" height max.

Figure 2-E.3.6 Battery Storage Room Data Sheet		
INDEX		E6
Description/Usage		Battery Storage room
Ceiling Height		No ceiling, 9'-0" minimum clearance
Windows		N/A
Doors	Type	No door, cased opening, 4'x7'
	Security/ Hardware	N/A
	View Panels/ Kick Plates	N/A N/A
Finishes	Walls	CMU - painted
	Floor	Sealed concrete
	Base	No base
	Ceiling	Gypsum board - painted
Plumbing		Emergency shower/eyewash station per UFC 3-420-01. Sink with drain to neutralization tank.
HVAC		Heating, ventilation, air conditioning. Exhaust from over charging stations to outdoors through roof.
Fire Protection / Life Safety		Wet pipe sprinkler system
Power		Per UFC 3-520-01
Lighting		Per UFC 3-530-01
Communication	Tele.	N/A
	Data	N/A
	CCTV	N/A
	CATV	N/A
	Security	N/A
Acoustical		N/A
Furnishings / Equipment / Casework		N/A
Special Requirements		

Figure 2-E.3.7 Shop Office Room Data Sheet		
INDEX		E7
Description/Usage		Open office with three workstations
Ceiling Height		9'-0" minimum
Windows		Exterior – Aluminum framed, insulated fixed, blast resistant; Meeting daylighting requirements of UFC 1-200-02
Doors	Type	Hollow metal, 3' x 7'
	Security/ Hardware	Keyed lock set
	View Panels/ Kick Plates	View panels, 5" x 20" Kick plates on both sides of door
Finishes	Walls	Gypsum board - painted
	Floor	Sealed concrete, stained concrete or tile
	Base	Resilient or tile
	Ceiling	Acoustical Ceiling Tile
Plumbing		N/A
HVAC		Heating, ventilation, air conditioning
Fire Protection / Life Safety		Wet pipe sprinkler system
Power		Per UFC 3-520-01
Lighting		Per UFC 3-530-01
Communication	Tele.	One per desk
	Data	NIPR
	CCTV	N/A
	CATV	N/A
	Security	N/A
Acoustical		Per UFC 3-450-01 for noise control
Furnishings / Equipment / Casework		Three (3) workstations
Special Requirements		N/A

Figure 2-E.3.8 TNB/FOM Room Data Sheet		
INDEX		E8
Description/Usage		TNB/FOM storage
Ceiling Height		No ceiling, 9'-0" minimum clearance
Windows		N/A
Doors	Type	Hollow metal, 3'x7'
	Security/ Hardware	Keyed lock set
	View Panels/ Kick Plates	No view panels Kick plates on both sides of door
Finishes	Walls	CMU - painted
	Floor	Sealed concrete
	Base	No base
	Ceiling	Exposed structure - painted
Plumbing		N/A
HVAC		Heating, ventilation, air conditioning
Fire Protection / Life Safety		Wet pipe sprinkler system
Power		Per UFC 3-520-01
Lighting		Per UFC 3-530-01
Communication	Tele.	One per room
	Data	NIPR
	CCTV	N/A
	CATV	N/A
	Security	N/A
Acoustical		Per UFC 3-450-01 for noise control
Furnishings / Equipment / Casework		N/A
Special Requirements		N/A

Figure 2-F.3.1 AME Storage Room Data Sheet		
INDEX		F1
Description/Usage		Storage with mezzanine
Ceiling Height		No ceiling, 18'-0" minimum clearance or as required for mezzanine
Windows		N/A
Doors	Type	N/A
	Security/ Hardware	N/A
	View Panels/ Kick Plates	N/A N/A
Finishes	Walls	CMU - painted
	Floor	Sealed concrete
	Base	No base
	Ceiling	Exposed structure - painted
Plumbing		N/A
HVAC		Heating, ventilation, air conditioning
Fire Protection / Life Safety		Wet pipe sprinkler system
Power		Per UFC 3-520-01
Lighting		Per UFC 3-530-01
Communication	Tele.	N/A
	Data	N/A
	CCTV	N/A
	CATV	N/A
	Security	Per program security requirements
Acoustical		Per UFC 3-450-01 for noise control
Furnishings / Equipment / Casework		
Special Requirements		

Figure 2-G.3.1 Wheel and Tire Shop Room Data Sheet		
INDEX		G1
Description/Usage		Maintains and stores aircraft wheel and tire components; builds-up, repairs, tests, stores, strips and degreases wheel and tire components and disassembles for nondestructive inspection (NDI)
Ceiling Height		No ceiling, 12'-0" minimum clearance
Windows		N/A
Doors	Type	Hollow metal, pair 3' x 7' to exterior and single 3' x 7' to corridor; overhead insulated coiling door, 10' x 10' to exterior
	Security/ Hardware	Keyed lock set
	View Panels/ Kick Plates	View panels, 5" x 20" Kick plates on both sides of doors
Finishes	Walls	CMU - painted
	Floor	Sealed concrete
	Base	No base
	Ceiling	Exposed structure - painted
Plumbing		Compressed air drops - coordinate with user on quantity and location. Possibly nitrogen for filling tires.
HVAC		Heating, ventilation, air conditioning
Fire Protection / Life Safety		Wet pipe sprinkler system
Power		Per UFC 3-520-01 in addition to tire-changing equipment power
Lighting		Per UFC 3-530-01
Communication	Tele.	One per room
	Data	NIPR
	CCTV	N/A
	CATV	N/A
	Security	N/A
Acoustical		Per UFC 3-450-01 for noise control
Furnishings / Equipment / Casework		N/A
Special Requirements		Rubber flooring mats throughout except where equipment is located.

Figure 2-G.3.2 Office Room Data Sheet		
INDEX	G2	
Description/Usage	Wheel and tire office with four workstations	
Ceiling Height	9'-0" minimum	
Windows	Exterior – Aluminum framed, insulated fixed, blast resistant; Meeting daylighting requirements of UFC 1-200-02, if located on an exterior wall	
Doors	Type	Hollow metal, 3' x 7'
	Security/ Hardware	keyed lock set
	View Panels/ Kick Plates	View panels, 5" x 20" Kick plates on both sides of doors
Finishes	Walls	Gypsum board - painted
	Floor	Sealed concrete, stained concrete, tile
	Base	Resilient or tile
	Ceiling	Acoustical Ceiling Tile
Plumbing	N/A	
HVAC	Heating, ventilation, air conditioning	
Fire Protection / Life Safety	Wet pipe sprinkler system	
Power	Per UFC 3-520-01	
Lighting	Per UFC 3-530-01	
Communication	Tele.	One per desk
	Data	NIPR
	CCTV	N/A
	CATV	N/A
	Security	N/A
Acoustical	Per UFC 3-450-01 for noise control	
Furnishings / Equipment / Casework	Four (4) workstations	
Special Requirements	N/A	

Figure 2-H.3.1 Egress Maintenance Room Data Sheet		
INDEX		H1
Description/Usage		Space and utilities for tools, equipment and personnel for maintenance of egress systems; work areas for repair, replacement, and inspection of ejection seats and canopy
Ceiling Height		No ceiling, 10'-0" minimum clearance
Windows		N/A
Doors	Type	Hollow metal, pair 3' x 7' and single 3' x 7'
	Security/ Hardware	Keyed lock set
	View Panels/ Kick Plates	View panels, 5" x 20" Kick plates on both sides of doors
Finishes	Walls	CMU - painted
	Floor	Sealed concrete
	Base	No base
	Ceiling	Exposed structure - painted
Plumbing		Compressed air drops - coordinate with users on number and location of drops
HVAC		Heating, ventilation and air conditioning. Specialized exhaust systems may be required. Exhaust directly outdoors.
Fire Protection / Life Safety		Wet pipe sprinkler system
Power		Per UFC 3-520-01
Lighting		Per UFC 3-530-01
Communication	Tele.	One per room
	Data	NIPR
	CCTV	N/A
	CATV	N/A
	Security	N/A
Acoustical		Per UFC 3-450-01 for noise control
Furnishings / Equipment / Casework		Work benches with devices on each end to work on ejection seats.
Special Requirements		Grounding bus bars located around workspace where transparencies and seats are being maintained.

Figure 2-H.3.2 Administration/Ready Room Data Sheet		
INDEX	H2	
Description/Usage	Ready room with four work stations, counter, sink, cabinets, microwave, refrigerator for maintenance staff	
Ceiling Height	9'-0" minimum	
Windows	Exterior – Aluminum framed, insulated fixed, blast resistant; Meeting daylighting requirements of UFC 1-200-02, if located on an exterior wall	
Doors	Type	Hollow metal, 3' x 7'
	Security/ Hardware	Keyed lock set
	View Panels/ Kick Plates	View panels, 5" x 20" Kick plates on both sides of doors
Finishes	Walls	Gypsum board - painted
	Floor	Sealed concrete, stained concrete, tile
	Base	Resilient or tile
	Ceiling	Acoustical Ceiling Tile
Plumbing	N/A	
HVAC	Heating, ventilation, air conditioning	
Fire Protection / Life Safety	Wet pipe sprinkler system	
Power	Per UFC 3-520-01	
Lighting	Per UFC 3-530-01	
Communication	Tele.	One per desk
	Data	NIPR
	CCTV	N/A
	CATV	N/A
	Security	N/A
Acoustical	Per UFC 3-450-01 for noise control	
Furnishings / Equipment / Casework	Counter, cabinets,	
Special Requirements	N/A	

Figure 2-H.3.3 Egress Support CTK Room Data Sheet		
INDEX		H3
Description/Usage		Tool storage and issue area
Ceiling Height		9'-0" minimum
Windows		N/A
Doors	Type	Hollow metal, pair 3' x 7'
	Security/ Hardware	Keyed lock set
	View Panels/ Kick Plates	View panels, 5" x 20" Kick plates on both sides of doors
Finishes	Walls	Gypsum board - painted
	Floor	Sealed concrete
	Base	Resilient or tile
	Ceiling	Acoustical Ceiling Tile
Plumbing		Hot and cold water for sink
HVAC		Heating, ventilation, air conditioning
Fire Protection / Life Safety		Wet pipe sprinkler system
Power		Per UFC 3-520-01
Lighting		Per UFC 3-530-01
Communication	Tele.	One per room
	Data	NIPR
	CCTV	N/A
	CATV	N/A
	Security	N/A
Acoustical		Per UFC 3-450-01 for noise control
Furnishings / Equipment / Casework		N/A
Special Requirements		N/A

Figure 2-H.3.4 Egress Storage Room Data Sheet		
INDEX		H4
Description/Usage		Egress storage of built-up seats
Ceiling Height		No ceiling, 10'-0" minimum clearance
Windows		N/A
Doors	Type	Hollow metal, pair 3' x 7'; overhead insulated coiling door, 8' x 8' to exterior, overhead coiling door, 8' x 8' to egress maintenance
	Security/ Hardware	Keyed lock set
	View Panels/ Kick Plates	View panels, 5" x 20" Kick plates on both sides of doors
Finishes	Walls	CMU - Painted
	Floor	Sealed concrete
	Base	No base
	Ceiling	Exposed structure - painted
Plumbing		N/A
HVAC		Heating, ventilation, air conditioning
Fire Protection / Life Safety		Wet pipe sprinkler system
Power		Per UFC 3-520-01
Lighting		Per UFC 3-530-01
Communication	Tele.	N/A
	Data	N/A
	CCTV	N/A
	CATV	N/A
	Security	N/A
Acoustical		Per UFC 3-450-01 for noise control
Furnishings / Equipment / Casework		N/A
Special Requirements		Grounding bus bars located around the room

Figure 2-H.3.5 CAD/PAD Room Data Sheet		
INDEX	H5	
Description/Usage	Secure storage room for canopy explosive charges and ejection seat rocket motors	
Ceiling Height	9'-0" minimum to underside of concrete cap	
Windows	No Windows Permitted	
Doors	Type	39" x 78" min. Class V vault door, secure
	Security/ Hardware	Per UFC 4-215-01
	View Panels/ Kick Plates	N/A
Finishes	Walls	CMU - painted
	Floor	Sealed concrete
	Base	No base
	Ceiling	Concrete - painted
Plumbing	Compressed air drops - coordinate with users on number of drops and location.	
HVAC	Heating, ventilation, and air conditioning. Specialized exhaust systems may be required. Exhaust directly outdoors. Humidifier/dehumidifier may be required due to the presence of ordnance. Explosion-proof fan motors may be required.	
Fire Protection / Life Safety	Wet pipe sprinkler system	
Power	Per UFC 3-520-01	
Lighting	Per UFC 3-530-01	
Communication	Tele.	N/A
	Data	N/A
	CCTV	N/A
	CATV	N/A
	Security	Per program security requirements
Acoustical	N/A	
Furnishings / Equipment / Casework	Explosive vaults for temporary of ejection seat and canopy explosives.	
Special Requirements	Grounding bus bars located around the room	

Figure 2-J.3.1 Men's Toilet/Locker/Shower Room Data Sheet		
INDEX		J1
Description/Usage		Men's toilet, locker, showers
Ceiling Height		9'-0" minimum
Windows		No Windows Permitted
Doors	Type	Hollow metal, 3' x 7'
	Security/ Hardware	Push-pull
	View Panels/ Kick Plates	No view panels Kick plates on both sides of doors
Finishes	Walls	Ceramic tile or quartz epoxy full height at wet walls, showers, gypsum board - painted
	Floor	Porcelain tile or quartz epoxy
	Base	Porcelain tile or quartz epoxy
	Ceiling	Gypsum board - painted
Plumbing		Water closets, urinals, lavatories, showers. Hot and cold water for fixtures. Floor drains in restroom and locker areas.
HVAC		Heating, ventilation, air conditioning. Exhaust directly outdoors.
Fire Protection / Life Safety		Wet pipe sprinkler system
Power		Per UFC 3-520-01
Lighting		Per UFC 3-530-01
Communication	Tele.	N/A
	Data	N/A
	CCTV	N/A
	CATV	N/A
	Security	N/A
Acoustical		Per UFC 3-450-01 for noise control
Furnishings / Equipment / Casework		N/A
Special Requirements		Water resistant gypsum board throughout.

Figure 2-J.3.2 Women's Toilet/Locker/Shower Room Data Sheet		
INDEX		J2
Description/Usage		Women's toilet, locker, showers
Ceiling Height		9'-0" minimum
Windows		No Windows Permitted
Doors	Type	Hollow metal, 3' x 7'
	Security/ Hardware	Push-pull
	View Panels/ Kick Plates	No view panels Kick plates on both sides of doors
Finishes	Walls	Ceramic tile or quartz epoxy full height at wet walls, showers, gypsum board - painted
	Floor	Porcelain tile or quartz epoxy
	Base	Porcelain tile or quartz epoxy
	Ceiling	Gypsum board - painted
Plumbing		Water closets, lavatories, showers. Hot and cold water for fixtures. Floor drains in restroom and locker areas.
HVAC		Heating, ventilation, air conditioning. Exhaust directly outdoors.
Fire Protection / Life Safety		Wet pipe sprinkler system
Power		Per UFC 3-520-01
Lighting		Per UFC 3-530-01
Communication	Tele.	N/A
	Data	N/A
	CCTV	N/A
	CATV	N/A
	Security	N/A
Acoustical		Per UFC 3-450-01 for noise control
Furnishings / Equipment / Casework		N/A
Special Requirements		Water resistant gypsum board throughout.

Figure 2-J.3.3 Men's Toilet Room Data Sheet		
INDEX		J3
Description/Usage		Men's Toilet for shop area
Ceiling Height		8'-0" minimum
Windows		No Windows Permitted
Doors	Type	Hollow metal, 3'x7'
	Security/ Hardware	Privacy lock set
	View Panels/ Kick Plates	No view panels Kick plates on both sides of door
Finishes	Walls	Gypsum board - painted
	Floor	Porcelain tile or quartz epoxy
	Base	Porcelain tile or quartz epoxy
	Ceiling	Gypsum board - painted
Plumbing		Water closets, urinals, lavatories. Floor drain in restroom area.
HVAC		Heating, ventilation, air conditioning. Exhaust directly outdoors.
Fire Protection / Life Safety		Wet pipe sprinkler system
Power		Per UFC 3-520-01
Lighting		Per UFC 3-530-01
Communication	Tele.	N/A
	Data	N/A
	CCTV	N/A
	CATV	N/A
	Security	N/A
Acoustical		Per UFC 3-450-01 for noise control
Furnishings / Equipment / Casework		N/A
Special Requirements		Water-resistant gypsum board throughout

Figure 2-J.3.4 Women's Toilet Room Data Sheet		
INDEX		J4
Description/Usage		Women's toilet for shop area
Ceiling Height		8'-0" minimum
Windows		No Windows Permitted
Doors	Type	Hollow metal, 3'x7'
	Security/ Hardware	Privacy lock set
	View Panels/ Kick Plates	No view panels Kick plates on both sides of door
Finishes	Walls	Gypsum board - painted
	Floor	Porcelain tile or quartz epoxy
	Base	Porcelain tile or quartz epoxy
	Ceiling	Gypsum board - painted
Plumbing		Water closets, lavatories. Floor drain in restroom area.
HVAC		Heating, ventilation, air conditioning. Exhaust directly outdoors.
Fire Protection / Life Safety		Wet pipe sprinkler system
Power		Per UFC 3-520-01
Lighting		Per UFC 3-530-01
Communication	Tele.	N/A
	Data	N/A
	CCTV	N/A
	CATV	N/A
	Security	N/A
Acoustical		Per UFC 3-450-01 for noise control
Furnishings / Equipment / Casework		N/A
Special Requirements		Water-resistant gypsum board throughout

Figure 2-J.3-5 Janitor Room Data Sheet		
INDEX		J5
Description/Usage		Custodial room for general maintenance for facility
Ceiling Height		9'-0" minimum
Windows		No Windows Permitted
Doors	Type	Hollow metal, 3'x7'
	Security/ Hardware	Keyed lock set
	View Panels/ Kick Plates	No view panels Kick Plates both sides of door
Finishes	Walls	Gypsum board - painted, ceramic tile at mop sink
	Floor	Porcelain tile or quartz epoxy
	Base	Porcelain tile or quartz epoxy
	Ceiling	Gypsum board - painted
Plumbing		Mop sink, floor drain
HVAC		Heating, ventilation, air conditioning. Exhaust directly outdoors.
Fire Protection / Life Safety		Wet pipe sprinkler system
Power		Per UFC 3-520-01
Lighting		Per UFC 3-530-01
Communication	Tele.	N/A
	Data	N/A
	CCTV	N/A
	CATV	N/A
	Security	N/A
Acoustical		Per UFC 3-450-01 for noise control
Furnishings / Equipment / Casework		N/A
Special Requirements		Water resistant gypsum board throughout.

Figure 2-K.3.1 Main Mechanical Room Data Sheet		
INDEX		K1
Description/Usage		Mechanical equipment
Ceiling Height		No ceiling, 9'-0" minimum clearance
Windows		No Windows Permitted
Doors	Type	Hollow metal, pair 3' x 7' to exterior
	Security/ Hardware	Keyed lock set
	View Panels/ Kick Plates	No view panels Kick plates on both sides of doors
Finishes	Walls	CMU - painted
	Floor	Sealed concrete
	Base	No base
	Ceiling	Exposed structure - painted
Plumbing		Floor drains as required
HVAC		Heating and ventilation
Fire Protection / Life Safety		Wet pipe sprinkler system
Power		Per UFC 3-520-01
Lighting		Per UFC 3-530-01
Communication	Tele.	One per room
	Data	NIPR
	CCTV	N/A
	CATV	N/A
	Security	N/A
Acoustical		STC 45 assembly minimum between adjacent spaces
Furnishings / Equipment / Casework		N/A
Special Requirements		N/A

Figure 2-K.3.2 Main Electrical Room Data Sheet		
INDEX		K2
Description/Usage		Electrical equipment
Ceiling Height		No ceiling, 9'-0 minimum clearance
Windows		No Windows Permitted
Doors	Type	Hollow metal, single or pair 3' x 7' to exterior
	Security/ Hardware	Keyed lock set
	View Panels/ Kick Plates	No view panels Kick plates on both sides of doors
Finishes	Walls	CMU - painted
	Floor	Sealed concrete
	Base	No base
	Ceiling	Exposed structure - painted
Plumbing		N/A
HVAC		Heating and ventilation
Fire Protection / Life Safety		Wet pipe sprinkler system
Power		Per UFC 3-520-01
Lighting		Per UFC 3-530-01
Communication	Tele.	N/A
	Data	NIPR
	CCTV	N/A
	CATV	N/A
	Security	N/A
Acoustical		N/A
Furnishings / Equipment / Casework		N/A
Special Requirements		N/A

Figure 2-K.3.3 Main Communications Room Data Sheet		
INDEX		K3
Description/Usage		Communications equipment
Ceiling Height		No ceiling, 9'-0 minimum clearance
Windows		No Windows Permitted
Doors	Type	Hollow metal, single 3' x 7'
	Security/ Hardware	Keyed lock set
	View Panels/ Kick Plates	No view panels Kick plates on both sides of door
Finishes	Walls	CMU - painted
	Floor	Sealed concrete
	Base	No base
	Ceiling	Exposed structure - painted
Plumbing		N/A
HVAC		Heating, ventilation and air conditioning. Dedicated unit required.
Fire Protection / Life Safety		Wet pipe sprinkler system
Power		Per UFC 3-520-01
Lighting		Per UFC 3-530-01
Communication	Tele.	N/A
	Data	NIPR
	CCTV	N/A
	CATV	N/A
	Security	N/A
Acoustical		N/A
Furnishings / Equipment / Casework		N/A
Special Requirements		N/A

Figure 2-K.3.4 Secondary Mechanical Room Data Sheet		
INDEX		K4
Description/Usage		Mechanical equipment
Ceiling Height		No ceiling, 9'-0" minimum clearance
Windows		No Windows Permitted
Doors	Type	Hollow metal, pair 3' x 7' to exterior
	Security/ Hardware	Keyed lock set
	View Panels/ Kick Plates	No view panels Kick plates on both sides of doors
Finishes	Walls	CMU - painted
	Floor	Sealed concrete
	Base	No base
	Ceiling	Exposed structure - painted
Plumbing		Floor drains as required
HVAC		Heating and ventilation
Fire Protection / Life Safety		Wet pipe sprinkler system
Power		Per UFC 3-520-01
Lighting		Per UFC 3-530-01
Communication	Tele.	N/A
	Data	NIPR
	CCTV	N/A
	CATV	N/A
	Security	N/A
Acoustical		STC 45 assembly minimum between adjacent spaces
Furnishings / Equipment / Casework		N/A
Special Requirements		N/A

Figure 2-K.3.5 Secondary Electrical Room Data Sheet		
INDEX		K5
Description/Usage		Electrical equipment
Ceiling Height		No ceiling, 9'-0 minimum clearance
Windows		No Windows Permitted
Doors	Type	Hollow metal, single or pair 3' x 7' to exterior
	Security/ Hardware	Keyed lock set
	View Panels/ Kick Plates	No view panels Kick plates on both sides of doors
Finishes	Walls	CMU - painted
	Floor	Sealed concrete
	Base	No base
	Ceiling	Exposed structure - painted
Plumbing		N/A
HVAC		Heating and ventilation
Fire Protection / Life Safety		Wet pipe sprinkler system
Power		Per UFC 3-520-01
Lighting		Per UFC 3-530-01
Communication	Tele.	N/A
	Data	NIPR
	CCTV	N/A
	CATV	N/A
	Security	N/A
Acoustical		N/A
Furnishings / Equipment / Casework		N/A
Special Requirements		N/A

Figure 2-K.3.6 Secondary Communications Room Data Sheet		
INDEX		K6
Description/Usage		Communications equipment
Ceiling Height		No ceiling, 9'-0 minimum clearance
Windows		No Windows Permitted
Doors	Type	Hollow metal, single 3' x 7'
	Security/ Hardware	Keyed lock set
	View Panels/ Kick Plates	No view panels Kick plates on both sides of door
Finishes	Walls	CMU - painted
	Floor	Sealed concrete
	Base	No base
	Ceiling	Exposed structure - painted
Plumbing		N/A
HVAC		Heating, ventilation and air conditioning. Dedicated unit required.
Fire Protection / Life Safety		Wet pipe sprinkler system
Power		Per UFC 3-520-01
Lighting		Per UFC 3-530-01
Communication	Tele.	N/A
	Data	NIPR
	CCTV	N/A
	CATV	N/A
	Security	N/A
Acoustical		N/A
Furnishings / Equipment / Casework		N/A
Special Requirements		N/A

Figure 2-K.3.7 Fire Pump Room Data Sheet		
INDEX		K7
Description/Usage		Fire pump equipment
Ceiling Height		No ceiling, 9'-0" minimum clearance
Windows		No Windows Permitted
Doors	Type	Hollow metal, pair 3' x 7' to exterior
	Security/ Hardware	Keyed lock set
	View Panels/ Kick Plates	No view panels Kick plates on both sides of doors
Finishes	Walls	CMU - painted
	Floor	Sealed concrete
	Base	No base
	Ceiling	Exposed structure - painted
Plumbing		Floor drains as required
HVAC		Heating and ventilation. Air conditioning required in foam equipment room with releasing panel per UFC 3-600-01.
Fire Protection / Life Safety		Wet pipe sprinkler system
Power		Per UFC 3-520-01 and NEC Article 695
Lighting		Per UFC 3-530-01
Communication	Tele.	N/A
	Data	NIPR
	CCTV	N/A
	CATV	N/A
	Security	N/A
Acoustical		N/A
Furnishings / Equipment / Casework		N/A
Special Requirements		N/A

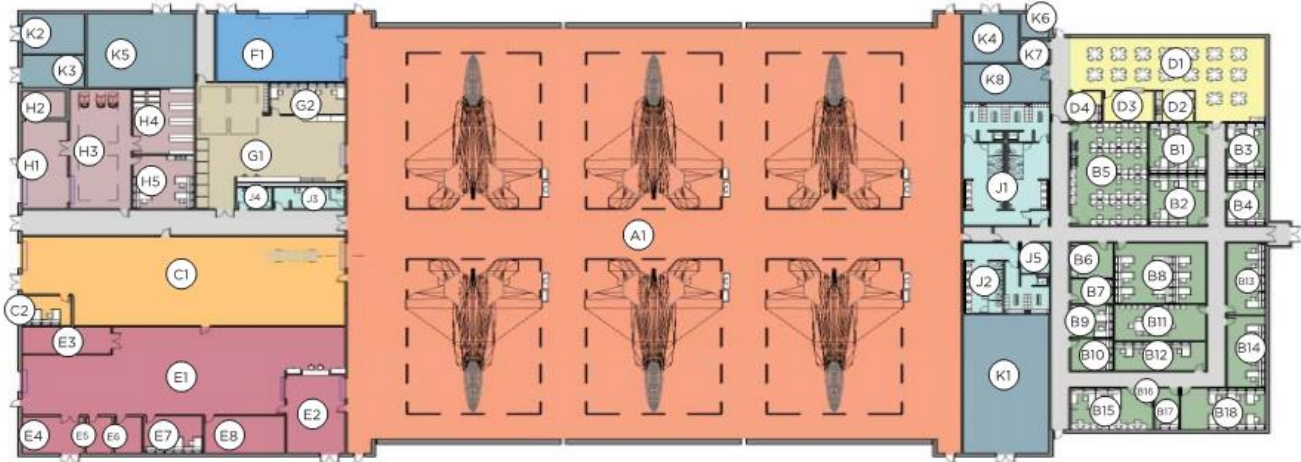
Figure 2-K.3.8 Building Maintenance Room Data Sheet		
INDEX		K8
Description/Usage		Open Room
Ceiling Height		No ceiling, 9'-0" minimum clearance
Windows		No Windows Permitted
Doors	Type	Hollow metal, pair 3' x 7' to exterior
	Security/ Hardware	Keyed lock set
	View Panels/ Kick Plates	No view panels Kick plates on both sides of doors
Finishes	Walls	CMU - painted
	Floor	Sealed concrete
	Base	No base
	Ceiling	Exposed structure - painted
Plumbing		Floor drains as required
HVAC		Heating and ventilation
Fire Protection / Life Safety		Wet pipe sprinkler system
Power		Per UFC 3-520-01
Lighting		Per UFC 3-530-01
Communication	Tele.	One per room
	Data	NIPR
	CCTV	N/A
	CATV	N/A
	Security	N/A
Acoustical		STC 45 assembly minimum between adjacent spaces
Furnishings / Equipment / Casework		N/A
Special Requirements		N/A

Entry Corridor Room Data Sheet		
INDEX		
Description/Usage	Building entrance from land side and general circulation within module	
Ceiling Height	9'-0" minimum	
Windows	N/A	
Doors	Type	Aluminum entrance door with glass or hollow metal with full glass, 3'x7'
	Security/ Hardware	Keyed lock set
	View Panels/ Kick Plates	Side light, 12" wide Kick plates both sides of door
Finishes	Walls	Gypsum board – painted
	Floor	Sealed concrete, stained concrete or tile
	Base	Resilient or tile
	Ceiling	Acoustical Ceiling Tile
Plumbing	N/A	
HVAC	Heating, ventilation, air conditioning	
Fire Protection / Life Safety	Wet pipe sprinkler system	
Power	Per UFC 3-520-01	
Lighting	Per UFC 3-530-01	
Communication	Tele.	N/A
	Data	N/A
	CCTV	N/A
	CATV	N/A
	Security	N/A
Acoustical	Per UFC 3-450-01 for noise control	
Furnishings / Equipment / Casework	N/A	
Special Requirements	N/A	

Circulation Room Data Sheet		
INDEX		
Description/Usage		This data sheet is for general circulation or corridor spaces not associated with individual modules.
Ceiling Height		9'-0" minimum
Windows		N/A
Doors	Type	Hollow metal, 3'x7' (egress)
	Security/ Hardware	Keyed lock set
	View Panels/ Kick Plates	N/A Kick plates both sides of door
Finishes	Walls	CMU – painted or gypsum board - painted
	Floor	Sealed concrete, stained concrete or tile
	Base	Resilient or tile
	Ceiling	Acoustical Ceiling Tile
Plumbing		N/A
HVAC		Heated and air conditioned
Fire Protection		Wet pipe sprinkler system
Power		Per UFC 3-520-01
Lighting		Per UFC 3-530-01
Communication	Tele.	N/A
	Data	N/A
	CCTV	N/A
	CATV	N/A
	Security	N/A
Acoustical Requirements		N/A
Furnishings, Equipment and Casework		N/A
Special Requirements		N/A

2.4.F. Floor Plan

The floor plan below is a composite of the Modules within the approved Functional Adjacency Diagram which is based on the criteria listed within this Standard Design document. The scaled drawing showing conceptual fixture and furniture information is located within the Standard Design drawings.



DRAWINGS NOT TO SCALE

2.4.G. Interactive Programming Worksheet

This tool is provided in two formats. A snapshot of the programming sheet is provided in this section primarily as a reference and reflects the baseline standard facility program based on the criteria as discussed in this document. The additional interactive programming sheet provides a tool for planners and programmers. It allows the input of authorized personnel positions and special purpose spaces. Updated inputs are automatically calculated and provide new required square footage for each space and the estimated overall facility size.

MODULE NO.	AREA TYPE	NO. OCCUP	SF PER USER	NO. OF ROOMS REQUIRED	INDIVIDUAL ROOM RQRMNTS	NET USER REQUIREMENTS		COMMENTS
						SF	SM	
A	Hangar Bay							
A1	Hangar Bay			1	33,480	33,480	3,110.29	1
SUBTOTAL HANGAR BAY AREA						33,480	3,110.29	
B	Administration							
B1	Training			1	380	380	35.30	3
B2	Specialist Section Chief			1	380	380	35.30	3
B3	Weapons Section Chief			1	260	260	24.15	3
B4	AOIC/NOIC			1	260	260	24.15	3
B5	ALIS Terminals			1	1,030	1,030	95.69	3
B6	ALIS Admin			1	190	190	17.65	3
B7	AMU Programming			1	140	140	13.01	3
B8	Contractor Open Office			1	720	720	66.89	3
B9	AFETS			1	180	180	16.72	3
B10	Contractor Office			1	180	180	16.72	3
B11	Conference			1	430	430	39.95	3
B12	Crew Chiefs 1			1	360	360	33.44	3
B13	Crew Chiefs 2			1	360	360	33.44	3
B14	OIC / Chief			1	360	360	33.44	3
B15	Debrief			1	430	430	39.95	3
B16	Secure Storage			1	20	20	1.86	3
B17	SEC Vault			1	130	130	12.08	3
B18	Production			1	460	460	42.73	3
SUBTOTAL ADMINISTRATION AREA						6,270	582.48	
C	Propulsion Shop							
C1	Propulsion Shop			1	3,550	3,550	329.80	9
C2	Propulsion Shop Office			1	190	190	17.65	3
SUBTOTAL PROPULSION SHOP AREA						3,740	347.45	
D	Ready Room							
D1	Ready Room			1	1,630	1,630	151.43	2
D2	Break Room			1	150	150	13.94	7
D3	Storage			1	200	200	18.58	
D4	Maintenance Dispatch			1	120	120	11.15	
SUBTOTAL MULTI-USE / COMMON AREA						2,100	195.09	
E	Tools & Parts Support							
E1	Tool Room			1	3,100	3,100	287.99	13
E2	Tool Issue			1	600	600	55.74	13
E3	Collateral Storage			1	330	330	30.66	13
E4	Hazmat			1	300	300	27.87	13
E5	Battery Charging			1	130	130	12.08	13
E6	Battery Storage			1	130	130	12.08	13
E7	Shop Office			1	290	290	26.94	13
E8	TNB/FOM			1	390	390	36.23	13
SUBTOTAL TOOLS & PARTS SUPPORT AREA						5,270	489.58	
F	AME Storage							
F1	AME Storage			1	1,140	1,140	105.91	10
SUBTOTAL AME STORAGE AREA						1,140	105.91	
G	Wheel & Tire Shop							
G1	Wheel & Tire Shop			1	1,740	1,740	161.65	11
G2	Office			1	310	310	28.80	3
SUBTOTAL WHEEL & TIRE SHOP AREA						2,050	190.45	
H	Egress Shop							
H1	Egress Storage			1	530	530	49.24	12
H2	CAD/PAD			1	150	150	13.94	12
H3	Egress Maintenance			1	960	960	89.18	12
H4	Egress Support CTK			1	520	520	48.31	12
H5	Administration/Ready Room			1	430	430	39.95	12
SUBTOTAL EGRESS SHOP AREA						2,590	240.61	
J	Toilet/Shower/Locker							
J1	Men's Toilet/Shower/Locker			1	1,275	1,275	118.45	5
J2	Women's Toilet/Shower/Locker			1	640	640	59.46	5
J3	Men's Toilet			1	200	200	18.58	5
J4	Women's Toilet			1	100	100	9.29	5
J5	Janitor			1	110	110	10.22	5
SUBTOTAL TOILETS/ SHOWERS/ LOCKERS AREA						2,325	215.99	
K	Building Support							
K1	Main Mechanical			1	1,590	1,590	147.71	6
K2	Main Electrical			1	330	330	30.66	6
K3	Main Telecommunications			1	260	260	24.15	6
K4	Fire Pump Room			1	360	360	33.44	6
K5	Secondary Mechanical			1	1,040	1,040	96.62	6
K6	Secondary Electrical			1	90	90	8.36	6
K7	Secondary Telecommunications			1	80	80	7.43	6
K8	Building Maintenance			1	440	440	40.88	6
SUBTOTAL BUILDING SUPPORT AREA						4,190	389.25	
	Circulation							
	Lobby			1	70	70	6.50	8
	Facility Corridors			1	3,390	3,390	314.93	8
TOTAL FACILITY NET FLOOR AREA						58,965	5,477.85	
CIRCULATION MULTIPLIER		8.5%				63,975		8
NET TO GROSS MULTIPLIER		10.0%				70,375		14
TOTAL FACILITY GROSS AREA (ROUNDED)						70,400		14.15.16
COMMENTS:								
1	Hangar Bay size is based upon F-35 Lighting II Facilities Requirements Document, Chapter 3.6.2. Maintenance Hangars, Figure 3-7 Maintenance Box for F-35 (60' x 43'), 6 aircraft positions - tail-to-tail configuration with required space between for F135 engine removal base on figure 3-14 [30' 0" as two engines will not be removed at same time and additional maneuvering space]; Air Force Manual 32-1084, 26 February 2016, Chapter 3 - Facility Class 2 - Maintenance Facilities, Table 3.2 Aircraft Separation Dimensions							
2	Inside Hangars: Hangar Bay with Vertical LR Doors with center mullion.							
3	Ready Room is a Special Purpose Room as defined in Chapter 6 of Air Force Manual 32-1084 for a user justified area for 60 persons.							
4	Reference Tables in Chapter 5 of Air Force Manual 32-1084 for Administration room sizes. Administration Areas include circulation factor of 10% per Chapter 1 Air Force Manual 32-1084.							
5	Team/Meeting/Mini-Conference Room; Conference Room per Table 6.4. of Air Force Manual 32-1084.							
6	Male/Female ratio of 60/40 as determined by the subject matter experts. Actual future count shall be based on International Plumbing Code, latest edition, Chapter 29 and the UFC 3-420-01, latest edition, Plumbing Systems.							
7	Building Support areas are estimates from charrette and may vary in final design when actual system is selected.							
8	(Sq. Ft. not included in Total Facility Net Floor Area as this area is included in Net to Gross Multiplier).							
9	Reference Tables in Table 6.3 of Air Force Manual 32-1084 Typical Special Purpose Spaces Programming for Break Room, 16% of occupancy x 100 sf per occupants.							
10	Circulation areas are based on Proof of Concept and a circulation multiplier of 10% per Air Force Manual 32-1084.							
11	This area size is per F-35 Lighting II Facilities Requirements Document, Chapter 3.6.2. Maintenance Hangars, Paragraph 3.6.3.3. Propulsion Maintenance Area.							
12	This area size is per F-35 Lighting II Facilities Requirements Document, Chapter 3.6.2. Maintenance Hangars, Paragraph 3.6.3.5. Armament Alternate Mission Equipment Maintenance and Storage Area.							
13	This area size is per F-35 Lighting II Facilities Requirements Document, Chapter 3.6.2. Maintenance Hangars, Paragraph 3.6.3.1. Wheel and Tire Maintenance Area.							
14	This area size is per F-35 Lighting II Facilities Requirements Document, Chapter 3.6.2. Maintenance Hangars, Paragraph 3.6.3.7. Canopy Maintenance Area; Paragraph 3.6.3.8. Ejector Seat Maintenance Area.							
15	These areas are user defined. SF to be adjusted and/or verified for each base installation.							
16	Per AFM 32-1084 Chapter 1, net-to-gross multiplier of up to 25%, used 10% as large portion of area is in Hangar Bay and for any additional Building Utility spaces that may be required. Also included in multipliers are column run-outs and mechanical/plumbing chases.							
17	All area SF's are rounded to the nearest whole 5 number.							
18	This worksheet represents a facility rounded up to 70,400 Square Feet.							